

What is a 1 MW solar power plant?

It consists of multiple interconnected solar panels that convert solar energy into electrical energy. This power plant has the capacity to produce 1 megawatt of electricity, which is equivalent to powering approximately 750 average homes. Welcome to the introduction of a 1 MW solar power plant, a remarkable source of clean and renewable energy.

How much does a 1 MW solar power plant cost?

The approximate cost needed for the installation of a 1 MW solar power plant is INR4 - INR5 crores. But this is just a tentative figure, the final price can vary. 2. How much electricity can a 1MW solar plant produce? A 1 MW system will generate: 14,40,000 units/year.

Can a 1 MW solar power plant be expanded?

A 1 MW solar power plant can be expanded by adding more solar panels, allowing for future growth and adapting to changing energy needs. The development and operation of a 1 MW solar power plant create employment opportunities across various stages, including manufacturing, installation, maintenance, and administration.

How much space does a 1 MW solar power plant need?

One Megawatt is equal to 1000 kilowatts. A 1 kW solar system needs a space of 100 sq feet for installation. Hence, a 1 MW solar power plant will require $(100 \times 1000) = 1,00,000$ square feet of area for installation. Preferably, a 1 MW solar power plant is a ground-mounted system since most rooftops don't have that much space for installation.

How many kilowatts can a solar power plant produce?

A solar power plant with 1 megawatt (MW) can produce around 4,000 kilowatt-hours (kWh) daily. Every month, this adds up to about 1,20,000 kWh. Annually, it reaches 14,40,000 kWh, enough to power big businesses. What Does 1 Megawatt Represent in the Context of Solar Power Plants?

How much solar energy does a 1 megawatt plant make a day?

Daily solar energy production changes based on location, time of year, and panel technology. A 1 megawatt

1 MEGAWATT SOLAR POWER PLANT



plant can make 3 to 4.5 MWh each day. This supports a strong, green community all year. Using a 1 megawatt to unit calculator makes it easy to see what this means. As 1 MWh is 1000 kWh, a good plant makes 1100 to 1600 MWh a year.



For a 1 MW plant, a minimum of 5 acres of land is required, implying that a 5 MW Solar Power Plant will cost Rs. 1 crore 25 lakh. Grid extension might cost up to Rs. 15 lakh per kilometer, depending on the capacity of the extension lines (range- 11kV to 123kV). As a result, the cost of grid extension is determined by the distance between the

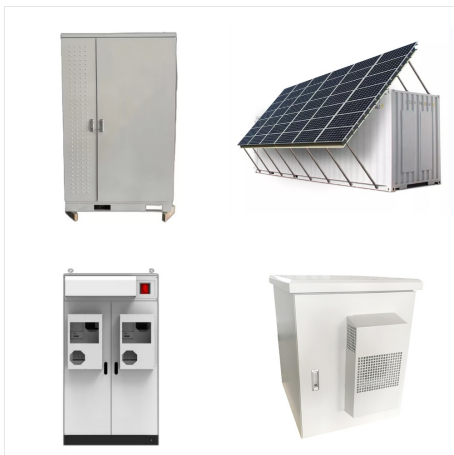


A 1,000kW solar kit requires up to 72,000 square feet of space. 1,000kW or 1,000 kilowatts is 1,000,000 watts of DC direct current power is also known as 1 mega-watt or 1mW. This could produce an estimated 112,500 kilowatt hours (kWh) of alternating current (AC) power per month, assuming at least 5 sun hours per day with the solar array facing

1 MEGAWATT SOLAR POWER PLANT



In the above backdrop, YOUR COMPANY NAME has decided to set up a 1/1000 MW/KW Solar Power Plant. This Detailed Project Report (DPR) brings out all technical details and overall costs justifying the selection of the project. The total power generation is envisaged to be 1050KW from Solar Photovoltaic Cell. It is a very important document that is



Pricing for 1MW (1,000kW) solar systems. As an indicative guide, 1MW solar power systems can start as cheap as \$1,100,000 for a straightforward installation with cost-effective products. 3.2 MW Rooftop Solar PV array for Primo Smallgoods, Wacol QLD (Read more about this project. Project tender managed by Solar Choice Commercial.)



Assuming an average power output of 200 W per panel and accounting for a 15% efficiency loss, we can calculate the number of panels needed for 1 MW.. $1 \text{ MW} = 1,000,000 \text{ W}$. Considering an efficiency loss of 15%, the total power required would be: $\text{Total Power Required} = 1,000,000 \text{ W} / (1 - 0.15) = 1,176,470.59 \text{ W}$

1 MEGAWATT SOLAR POWER PLANT



A 1 MW solar power plant is a solar farm that has the capacity to produce 1 MW of electricity. This is equivalent to 1,000 kilowatts (kW) or 1,000,000 watts. To put it into perspective, the average Indian household consumes around 7,200 kWh of electricity per year.



Understanding the Scope of a 1 MW Solar Power Plant. India is moving forward with sustainable energy, focusing more on solar power now. The need for space for a 1mw solar power system is becoming crucial for businesses and industries. They want to use solar energy well. Fenice Energy is leading this change, helping develop solar infrastructure



Utility-scale solar farms. A utility-scale solar farm (often referred to as simply a solar power plant) is a large solar farm owned by a utility company that consists of many solar panels and sends electricity to the grid. Depending ???

1 MEGAWATT SOLAR POWER PLANT



Utility-scale solar farms. A utility-scale solar farm (often referred to as simply a solar power plant) is a large solar farm owned by a utility company that consists of many solar panels and sends electricity to the grid. Depending on the installation's geographic location, the power generation at these farms is either sold to wholesale utility buyers through a power ???



and annual additions of about 40 GWs in recent years, 1 solar photovoltaic (PV) technology has become an increasingly important energy supply option. A substantial decline in the cost of solar PV power plants (80% reduction since 2008) 2 has improved solar PV's competitiveness, reducing the needs

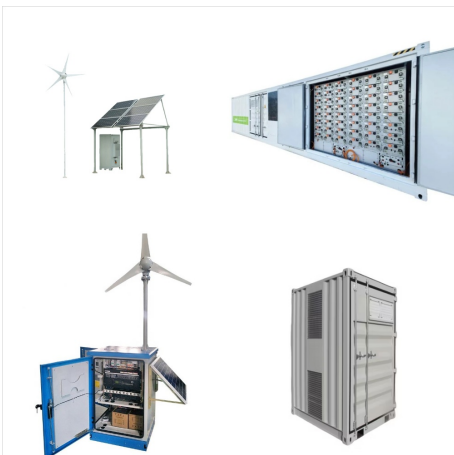


Rating of system capacity - MW AC, MW P and MW. Capacity ratings for utility-scale power stations are usually given in megawatts, which for most technologies means AC. However for solar plants this is sometimes expressed in terms of the DC peak capacity of the solar array, and sometimes the AC output deliverable to the grid.

1 MEGAWATT SOLAR POWER PLANT



On average, a 1-megawatt solar power plant can create 4,000 units each day. As a result, it produces 1,20,000 units each month and 14,40,000 units annually. Let's look at an example to better comprehend it. The following is the solar power calculation for a 1MW solar power plant:



The first section of a project report gives an overall view of the solar power plant. For a 1 MW solar power plant, it's essential to mention the land required, which is typically around 4 to 5 acres. The plant can either be ground-mounted or rooftop depending on the location and available space. Ground-mounted solar plants are more common for large-scale projects like 1 MW, ???



According to one source, on average, 1 megawatt of solar power generates enough electricity to power 164 U.S. homes. So, 100 megawatts of solar power can power 16,400 U.S. homes. A single megawatt-hour can power the following: 1.2 months of electricity for an average American home; 3,600 miles driven by an electric car; 2 refrigerators run

1 MEGAWATT SOLAR POWER PLANT



We began by mining Berkeley Lab's Utility-Scale Solar dataset [1] to establish the universe of operational utility-scale PV plants in the United States through the end of 2019 and to pull key metadata for each plant in that universe. Key meta-data includes each plant's commercial operation date (COD),



1 megawatt (MW) of solar panels will generate 2,146 megawatt hours (MWh) of solar energy per year. I have a question regarding solar power. Which is "At 6 AM today, you purchased 1 MW of electricity contract for 12 PM at a price of 100 pounds/MWh. Two hours later, the forecast for solar generation for 12 PM has changed from 4 GW to 4.5 GW



LCOSS levelized cost of solar-plus-storage . Li-ion lithium-ion . MW. AC megawatts alternating current . MW DC megawatts direct current . NREL National Renewable Energy Laboratory . O& M operation and maintenance . OPEX operating expenditures . PII permitting, inspection, and interconnection . PV photovoltaic(s) Q quarter . RTE round-trip efficiency

1 MEGAWATT SOLAR POWER PLANT

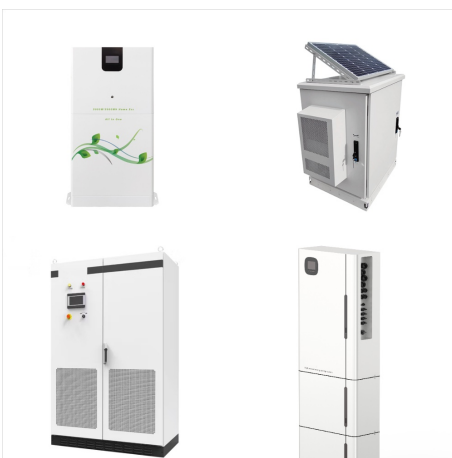


Preferably, a 1 MW solar power plant is a ground-mounted system since most rooftops don't have that much space for installation.

Ground-mounted solar power plants work the same as rooftop solar plants. Installing a ground-mounted plant is apt if you have a commercial business with an open land space.



A 1MW solar power plant is a solar energy system that has a capacity of 1 Megawatt (MW) or 1,000 kilowatts (kW). It typically consists of photovoltaic (PV) panels, inverters, and other equipment that convert sunlight into electricity. Some of the factors that determine the land requirement for a 1MW solar power plant are: 1. Type of PV



Investment in a 1 MW solar power plant in India is a serious step towards energy independence and sustainability. Although its initial investment is a bit on the higher side, long-term benefits in terms of savings on electricity charges, incentives from the government, and environmental effects make the option highly viable for businesses and other large institutions.

1 MEGAWATT SOLAR POWER PLANT



Step 1: Getting a PPA for a MW Solar Power Plant:
PPA A solar Power Purchase Agreement (PPA) is an agreement between a solar power generator (developer) and an energy consumer or utility (off-taker) to buy the solar power generated by the developer. In many countries, PPA contractual terms last for 25 years.



The 40.5 MW J?nnersdorf Solar Park in Prignitz, Germany. A photovoltaic power station, also known as a solar park, solar farm, or solar power plant, is a large-scale grid-connected photovoltaic power system (PV system) designed for the supply of merchant power. They are different from most building-mounted and other decentralized solar power because they supply ???

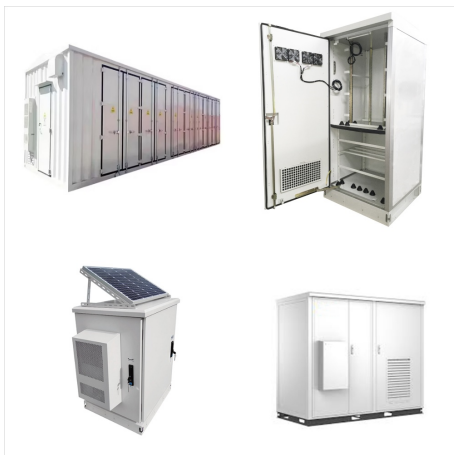


The Components of a 1 MW Solar Power Plant.
Before delving into the installation cost, it is crucial to understand the components that make up a 1 MW solar power plant. These projects typically consist of the following key elements: 1. Solar Panels: The primary component of a solar power plant is the solar panels themselves. These panels, also

1 MEGAWATT SOLAR POWER PLANT



1 MW Solar Power Plant Cost and Profit. The cost of a 1 MW solar power plant varies depending on a number of factors, including: The type of solar panels you choose; The efficiency of the solar panels; The cost of labor and materials in ???



The power production capacity of a 1 MW solar power plant is very high as it is not a small-capacity system. But how much electricity can it produce? A 1 kW solar system produces roughly 4 units/day. Hence, a 1MW system will generate (4 units x 1000 kW) = 4,000 units/day, as 1MW = 1000kW.



In this work, performance analysis and comparison of three photovoltaic technologies are carried out in the Louisiana climate. During the calendar year of 2018, the University of Louisiana at Lafayette constructed and commissioned a 1.1 MW solar photovoltaic power plant for researching solar power in southern Louisiana and for partial energy demand ???