



Therefore, this paper presents a performance analysis of a 10 MW solar-photovoltaic plant installed in Soroti City, in Eastern Uganda (latitude 1°N, longitude 33°E). Investment cost (US\$ million) Soroti Solar Power Plant (2016) Access solar Uganda: 10: 19.0: Tororo Solar Power Plant (2017) Tororo Solar North Ltd: 10:



Solar farm costs can be estimated by energy output (megawatts) or size (acres). One megawatt is the power equal to 1 million watts, and one megawatt will power about 164 homes. Several factors contribute to this project's overall cost, such as the type and size of the solar farm you install. Types Community Solar Farms

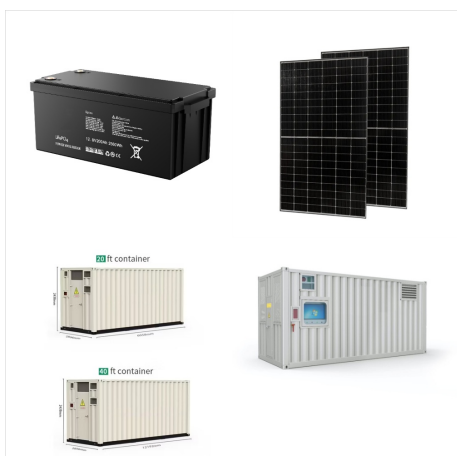


A 1-MW solar farm costs \$900,000 to \$1,300,000 to build and powers 100 to 250 homes. The cost to build a solar farm depends on size, type, and location. Solar power plant cost breakdown. Size and capacity are the biggest factors impacting the cost of a solar farm. Other cost factors to consider when planning a solar farm installation include:

10 MW SOLAR POWER PLANT COST



3. Project Description By installing and successfully operating 10 MW photovoltaic (PV) power plants will deliver electricity for consumption by the owners, the relevant peoples in the project assessment place will be made aware of the technical and economic potential of solar power generation. Furthermore, the power required from the public grid will be reduced, and ???



A 1 MW solar power plant can be expanded by adding more solar panels, allowing for future growth and adapting to changing energy needs. Job Creation And Economic Benefits: The development and operation of a 1 MW solar power plant create employment opportunities across various stages, including manufacturing, installation, maintenance, and



Units using capacity above represent kW AC.. 2024 ATB data for utility-scale solar photovoltaics (PV) are shown above, with a base year of 2022. The Base Year estimates rely on modeled capital expenditures (CAPEX) and operation and maintenance (O& M) cost estimates benchmarked with industry and historical data.Capacity factor is estimated for 10 resource ???

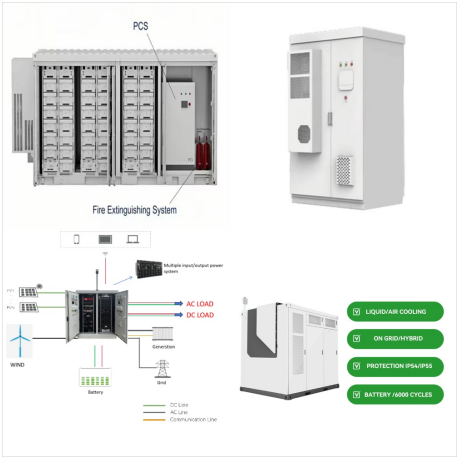
10 MW SOLAR POWER PLANT COST



Figure 31: Forecasted Average Capex Costs for Multi-MW Solar PV Park, 2010-2020
174 cost of solar PV power plants (80% reduction since 2008) 2 has improved solar PV's competitiveness, reducing the needs for subsidies and enabling solar to compete with other power



10 acres per 1 MW, for the arrays and site development, according to the BetterEnergy Land Use Primer.. Specifically 2.5 acres per 1 MW just for solar panels, plus more land for equipment, 8billiontrees notes. 4-5 acres total for a 1 MW commercial solar installation, but 30+ acres for larger utility-scale projects, Coldwell Solar explains. For ???



% off your annual electricity bill. Unbiased Energy Advisors ready to help. Key takeaways about solar farms. A solar farm is generally a large-scale solar installation. Solar farms are most often ???

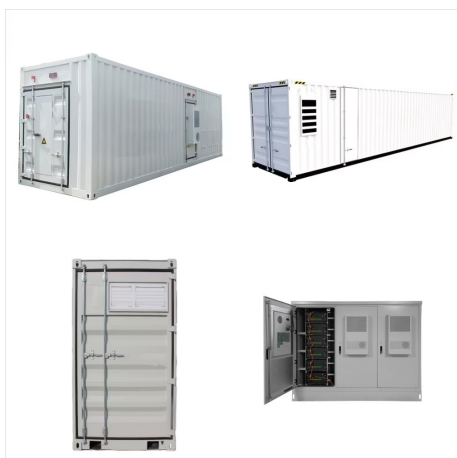
10 MW SOLAR POWER PLANT COST



The cost of building coal-fired power plants can be reduced using advanced financial models and engineering solutions offered by industry leaders. Solar Power Plants. Back; Solar Power Plants; a 1,000 MW coal-fired power plant could cost in ???



The solar chimney power plant (SCPP) offers viable option for large-scale utilization of solar energy by combining relatively simple and reliable technologies, such as the solar thermal collector, chimney, and turbine, as shown in Fig. 2. As an eco-friendly renewable energy technology, the SCPP offers numerous advantages such as: (1) The SCPP can utilize ???



A 1 MW solar plant using Silicon needs about 5 acres. The cost goes up based on the land's quality and its location. This reduces the land costs for solar power plant setups. Looking at grid-connected solar plants, a 1 kW rooftop system needs only 12 sq. meters. This is much less than ground-mounted projects.

10 MW SOLAR POWER PLANT COST



As of January 2022, the average cost of solar in the U.S. is \$2.77 per watt (\$27,700 for a 10-kilowatt system). That means the cost for a 10 kW solar system would be \$20,498 after the federal tax credit discount (not factoring in any additional state rebates or incentives). And is a 10 kW solar system worth it? Typically, yes.



LCOE for the plant using SC as a power block is 0.0947 \$/KWh which is lower than the GC and OC by 31.82% and 48.8%, respectively. Therefore, it is concluded a CST technology with packed rock bed TES and SC would be the appropriate choice for a stand-alone solar power plants capacities within range 10 MW.



CrossBoundary will sell the electricity from the plant to NB under a pioneering "solar-as-a-service" 15-year PPA. 10. JABI LAKE MALL 0.610 MW. The off-grid solar PV plant is located at the Jabi Lake Mall in Jabi, Abuja, in the Central part of the country. Actis, a U.K.-based private equity firm, owns Jabi Lake Mall.

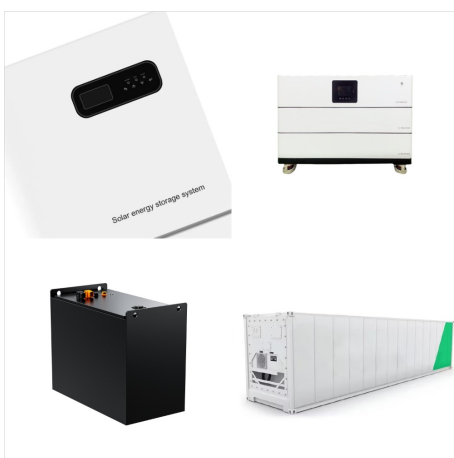
10 MW SOLAR POWER PLANT COST



a natural gas power plants added a total capacity of 6,549 MW. Natural gas power plant construction costs for the same year averaged \$812/kw, for a total cost of \$5,318,957 for 74 generators. combined cycle plants tend to be used to meet baseline demand loads due to their higher efficiency and lower operating costs. Solar. Solar



A 10 MW photovoltaic grid connected power plant commissioned at Ramagundam is one of the largest solar power plants with the site receiving a good average solar radiation of 4.97 kW h/m²/day and annual average temperature of about 27.3 degrees centigrade. The plant is designed to operate with a seasonal tilt.



The PS10 Solar Power Plant (Spanish: Planta Solar 10), is the world's first commercial concentrating solar power tower operating near Seville, in Andalusia, Spain. The 11 megawatt (MW) solar power tower produces electricity with 624 large movable mirrors called heliostats. [2] It took four years to build and so far has cost ???35 million (US\$46 million). [3]

10 MW SOLAR POWER PLANT COST



How much land is required for a 1 MW solar power plant? Typically, 4 to 5 acres of land are required for a 1 MW solar power plant, depending on the type of solar panels and layout. 2. What is the cost of setting up a 1 MW solar power plant? The cost ranges between ???4.5 crore to ???6 crore, depending on location, technology, and other factors. 3.



Therefore, this study aims to develop a cost-effective 10 MW-100% solar concentrated solar tower (CST) technology. 10 MW Concentrated Solar Power (CSP) plant operated by 100% solar energy:



How much does a solar farm cost? Data collected by the Solar Energy Industries Association (SEIA) shows that utility-scale solar will cost an average of \$0.98 per watt in 2024, not including the cost of purchasing land.. Thus, a 1 MW solar farm would cost a whopping \$980,000. The largest solar power plant in the world, the Xinjiang Solar Park in China, is over 3,000 MW in ???

10 MW SOLAR POWER PLANT COST



1 MW Solar Power Plant Specifications. Fenice Energy is a top provider of green energy solutions. They know a lot about making and running big solar power plants. In India, a 1MW solar plant can produce about 14.60 lakh units of electricity a year. This makes it smart for businesses and industries wanting to cut their emissions and energy bills.



Fenice Energy stands out by showing how solar power investments help businesses. A big 5 MW solar plant can power around 1,250 homes. It can also meet the energy needs of many businesses and industries. The cost of a 5 MW solar plant is between ???18-???19.5 crores. But, over time, the savings on energy bills make it worth it. Also, a

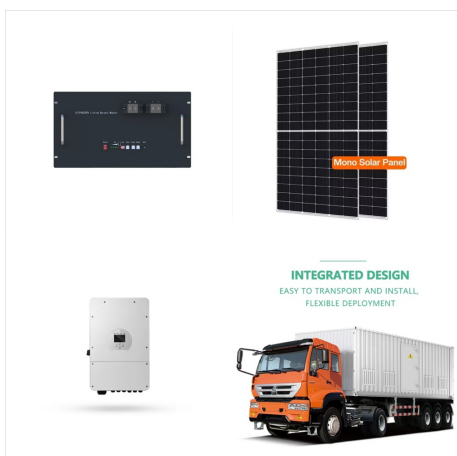


KANSAS CITY, Mo. ??? Jan. 5, 2022 ??? Evergy announced today that its Hawthorn power plant will be home to 10 megawatts (MW) of new solar energy, pending regulatory approval. Five MW will be for participants in Evergy's Solar Subscription program, and the other 5 MW will serve all Evergy customers.

10 MW SOLAR POWER PLANT COST



High-capacity systems of over 100kW are called Solar Power Stations, Energy Generating Stations, or Ground Mounted Solar Power Plants. A 1MW solar power plant of 1-megawatt capacity can run a commercial establishment independently. This size of solar utility farm takes up 4 to 5 acres of space and gives about 4,000 kWh of low-cost electricity every day.



Tata Power Solar successfully completed a 10 MW solar power plant commissioned by Jindal Aluminum Ltd (JAL) in Chitradurga, located 230 km from Bengaluru, Karnataka. Executed in a record timeframe of 4 months from the day the land was made available in January 2012, through this project Tata Power Solar demonstrated leadership in high



If you are thinking of setting up a 1 MW solar power plant and are keen on knowing the 1 megawatt solar power plant cost, dig in for details! Types of Solar Power Plants. Before directly moving to the solar plant cost, let us first look at the types of 1 MW solar power plant installations. There are 3 major types as discussed below. #1.

10 MW SOLAR POWER PLANT COST



A 5 MW solar plant is massive! In ideal conditions, it can power up to 1,250 homes. Or meet the complete electricity requirements of several businesses and industries. A business can set up a 5 MW solar plant to use the power themselves and work towards their net zero goals. Or they can sell the power to other businesses through open access.