

Is a 200W solar panel bigger than a 100W?

A 200W solar panel is roughly twice the size of a 100W panel when all other factors are equal. Most designs around fold up for portability and storage, but not all of them. Size is also a factor when you are setting up a solar panel. Since the 200W panel is larger, it will require more space.

What are 200 watt solar panels?

Companies like Grape Solar and Renogy offer 200-watt solar panel kits for purchase. These 200-watt kits are almost always a set of two 100-watt panels packaged together as a unified solar kit. 200-watt solar panels are most often used for portable solar projects, DIY solar and generating power for RVs and boats.

What is a 100 watt solar panel?

The number of watts in a solar panel indicates its overall capacity to produce power, and 100-watt solar panels are on the lower end of the spectrum. Higher-wattage panels, like those over 300 watts, can produce more electricity. There are hundreds of solar panel options with a variety of power ratings.

How much power does a 200 watt solar panel kit produce?

A 200-watt solar panel kit is rated to produce 200 watts of power, but the actual power output you see from your panels depends on many factors, including geographic location, shading, and the tilt of your panels.

Can you connect a 200 Watt and a 100 watt panel together?

It is possible to connect a 200-watt and a 100-watt panel together, but it isn't the best solution. That is because the overall power capabilities will be limited by the difference in wattage. You are better off using three 100-watt panels instead.

What does wattage mean on a solar panel?

You'll often see it referred to as "Rated Power", "Maximum Power", or "Pmax", and it's measured in watts or kilowatts peak (kWp). For example, the nameplate from my solar panel specifies a Wattage output of 100W, meaning that the solar panel is capable of producing 100 Watts of power under ideal conditions.

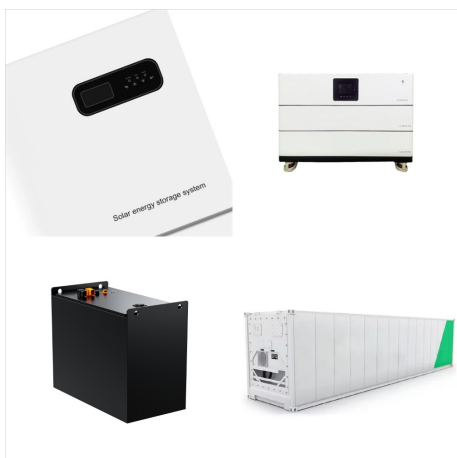
# 100 WATT VS 200 WATT SOLAR PANEL



Shop Renogy 1-Module 58.7-in x 27.5-in 200-Watt Solar Panel in the Solar Panels department at Lowe's . This Renogy 200 Watt Solar Panel features an extended lifespan for outdoor use and high resistance against the wind (2400Pa) and snow (5400Pa). Each panel can



The calculated amps from watts and voltage are 10 to 12 amps per hour for a 200-watt solar panel. The assumed sunlight per day for this calculation is 6 hours. Amps vs watts vs volts in a solar panel together produce, store, and transmit electricity. The potential difference in the solar system is determined by volts. The solar panel

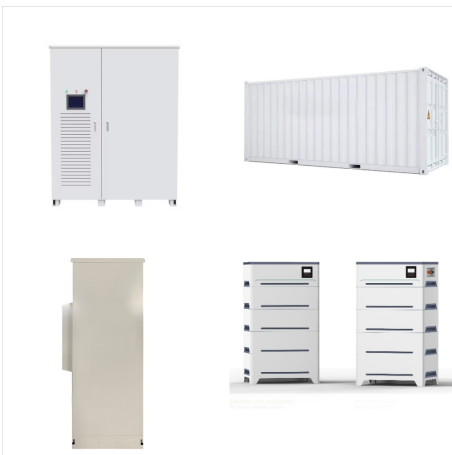


200 watts of power is equal to 16.6A @12 volts or 1.6A @120 volts. 200 watts of power means you can run a 200 watt appliance for an hour. 200 watt solar panel voltage output A 200 watt solar panel will produce about 18-18.5 voltage output under ideal conditions (1kW/m<sup>2</sup> sunlight intensity, 25 °C temperature, and 1.5 air mass).

# 100 WATT VS 200 WATT SOLAR PANEL



For a 200-watt solar panel setup, you can expect to pay a minimum of \$1,000, including a battery. But that is a small price to pay for access to reliable power. What is the best use of a 200-watt solar panel? 200 W solar panels are best ???

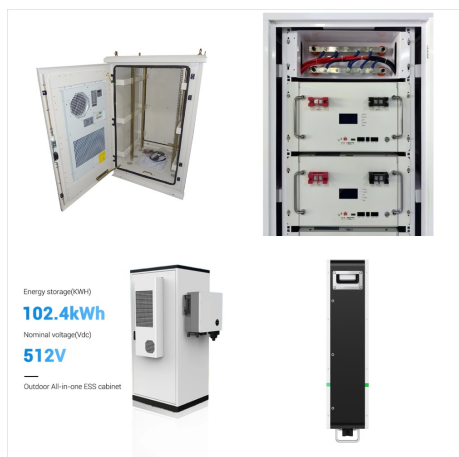


Here are a few examples of the dimensions of the most popular solar panel wattages: A typical 100-watt solar panel is 41.8 inches long and 20.9 inches wide. It takes up 6.07 sq ft of area. If you have a 1000 sq ft roof, and you can use 75% of that roof area for solar panels, you can theoretically put 123 100-watt solar panels on a 1000 sq ft roof.



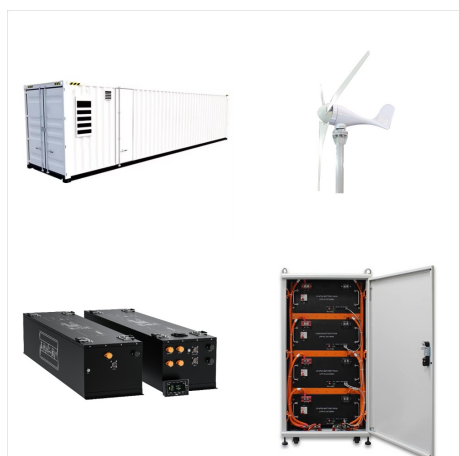
Solar Panels : 200 watt Solar Panels What are the factors that affect the power generated by a 200-Watt solar panel, and how to evaluate if it suits you. Learn how much power a 200-Watt Solar panel produces and the devices it can power.

# 100 WATT VS 200 WATT SOLAR PANEL



## Final Thoughts About 100-Watt Solar Panels.

100-watt solar panels offer an accessible entry point into the world of solar energy. They provide a sustainable way to power small devices and appliances, making them ideal for camping, RVs, boats, or as a starter for home solar projects.



In this EcoWatch guide on 400-watt solar panels, you'll learn: What are the best 400-watt solar panels? How much can a 400-watt solar panel power? 200 watts: Rice Cooker: 200 watts: Heated Blanket: 200 watts: Up to 56" LCD TV: 225 watts: Paper Shredder: 225 watts: TV: 230 watts: PC (Non-Gaming) 240 watts: Small Dehumidifier:



When discussing solar panel series vs parallel configurations, parallel wiring is a distinct approach to connecting multiple solar panels. In a parallel connection, all positive terminals of the solar panels are connected together, and all negative terminals are likewise joined. This setup differs significantly from solar panels in series.

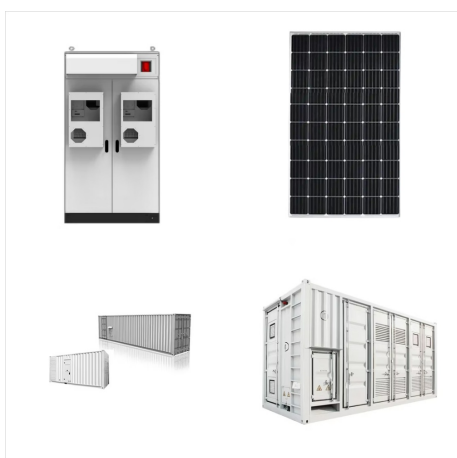
# 100 WATT VS 200 WATT SOLAR PANEL



Thanks for the information. I am looking at Rich Solar which have 12 volt panels in both 100 watt and 200 watt. The cost per watt is similar. The 200 watt is about 11" longer and 7" wider. I have limited space on top of my 25" motorhome. One or two 200 watt panels may be easier to locate the four 100 watt panels.



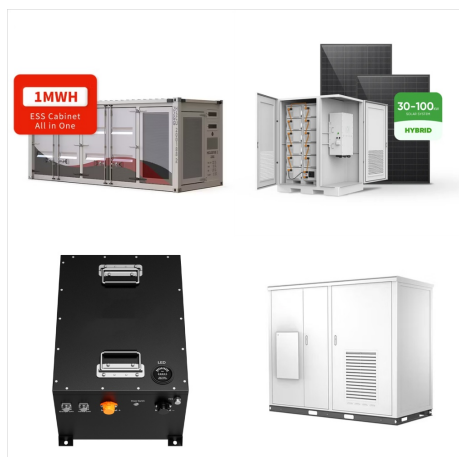
For example, if you have a 200-watt solar panel and a 100-watt solar panel, you can combine them to form a 300-watt array. This will provide you with more power than two 100-watt panels or one 200-watt panel alone. Decide on the number of 100 watt and 200 watt solar panels needed to produce the desired output;



Usually, 200-watt solar panel kits consist of two 100-watt panels sold together that equal 200 W total. This arrangement means the lot will produce less electricity than other residential solar panel models.



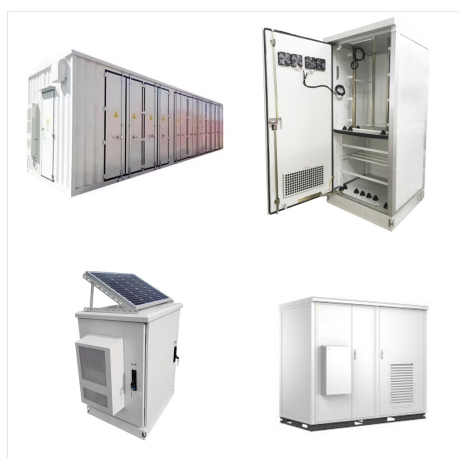
# 100 WATT VS 200 WATT SOLAR PANEL



I personally feel that 4-100 watt solar panels is a joke. They now make much higher output ones. I recently saw ones for sale that were 360 watts per panel. Not sure if they would work on a RV but I know the new designed ones gets a lot more wattage from the same surface area. We are looking at after market installers.



is their an advantage to 200+ watt panels vs 100 watt panels? Thread starter Jamie.sanders; Start date Jul 16, 2021; J. Jamie.sanders New Member new guy here, I'm looking at the blueprints in particular the Rich solar 100 watt Poly panel for \$89.00 this looks to be the best bank for the buck. but is this the best bang for the buck? Is their



If we compare a 100 vs 200-watt solar panel, we know that a 100-watt solar panel produces roughly 5-6 amps per hour. In a 200 watt solar panel, this will most likely translate to 10-12 amps per hour. We can estimate that in a day there will generally be about 6 hours of decent sunlight to power your solar panel. This means that a 200-watt solar

# 100 WATT VS 200 WATT SOLAR PANEL



The primary differences between 100W and 200W solar panels lie in their size, power output, weight, and charging capability. A 200W panel, being larger, generates more electricity due to more solar cells and charges ???



100-watt solar panels at a glance. Prices for 100-watt solar panels range from about \$70 to \$200, with the higher-priced panels coming with long warranties and premium features. A 100-watt solar panel typically produces between 300 and 600 watt-hours (Wh) of solar energy per day.



? A 100W solar panel generates a maximum of 100 watts under ideal conditions. This means, during peak sunlight hours, you can expect around 400-500 watt-hours per day if you ???

# 100 WATT VS 200 WATT SOLAR PANEL



A 400 W solar panel does what it sounds like ??? one panel produces an output of 400 watts of electricity, which yields approximately between 1.2 and 3 kilowatt hours (kWh) daily. How much electricity your panels actually generate on a day-to-day basis depends on a few key factors such as how much sunlight they get, your geographic location and the angle your ???



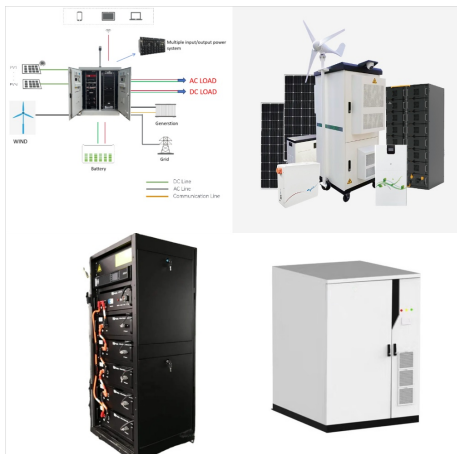
A 100-watt solar panel will charge a 100Ah 12V lithium battery in 10.8 peak sun hours (or, realistically, in little more than 2 days, if we presume an average of 5 peak sun hours per day). The most common solar panel sizes are 100-watt, 200-watt, 300-watt, and 400-watt panels. This is a specified solar panel wattage that is generated during



-watt solar panels have a nominal voltage of 24 Volts instead of 12 Volts, these solar panels produce around 5 Amps of current. For example, this 200W solar panel from Rich Solar has an  $I_{mpp}$  of 5.32 Amps. An important thing to add is that solar panels have a 2nd Current (Amperage) rating: the Short-Circuit Current, or " $I_{sc}$ ".



# 100 WATT VS 200 WATT SOLAR PANEL



Diving into solar power raises many questions, especially when selecting suitable solar panels. One common query is: Can you mix and match 100-watt and 200-watt solar panels? This article addresses this question, providing a clear comparison between 100W and 200W solar panels and guidance on how to seamlessly integrate panels of different wattages, such as ???

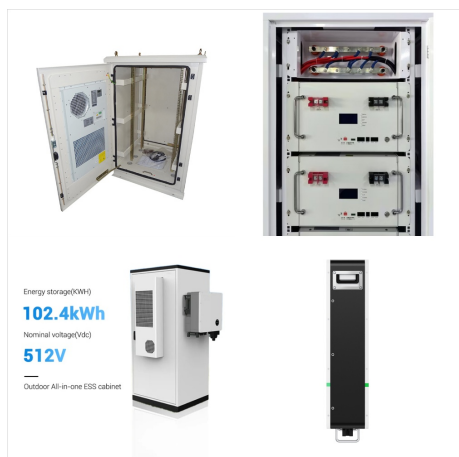


When discussing solar panel series vs parallel configurations, parallel wiring is a distinct approach to connecting multiple solar panels. In a parallel connection, all positive terminals of the solar panels are connected ???



Suppose you live in an area with 4 hours of peak sunlight, and your 200-watt panel is rated. In that case, the solar panel's output will be: Daily watt-hours =  $4 \times 200 \times 0.85 = 680\text{Wh}$ . This means a 200-watt solar panel can produce around 600Wh, depending on its efficiency. With a Jackery SolarSaga 200W Solar Panel, you can benefit from a high

# 100 WATT VS 200 WATT SOLAR PANEL



The Grape Solar 300-Watt Mono-crystalline PV Solar Panel bonus pack bundles 4 Grape Solar US Made 300-Watt solar panels for extra savings. The Grape Solar 300-Watt Monocrystalline PV Solar Panel uses high efficiency solar cells made from quality silicon material for high module conversion



100 Watt Solar Panels 200 Watt Solar Panels 300 Watt Solar Panels 400 Watt Solar Panels 500 Watt Solar Panels Solar Panel Type Solar Panel Type. Monocrystalline Solar Panels Polycrystalline Solar Panels 100 watt solar panels offer a lifetime of dependable energy production. Embrace the power of the sun and enjoy the freedom of renewable



For example, a 6.6 kW solar system typically consists of 20 panels each delivering 330W of power. Solar Panel Wattage. Divide the average daily wattage usage by the average sunlight hours to measure solar panel wattage. Moreover, panel output efficiency directly impacts watts and the system's overall capacity.

# 100 WATT VS 200 WATT SOLAR PANEL



Have you purchased a 200-watt solar panel, and wondered if it can be used with your old 100-watt panel? The short answer is, yes, you can mix solar panels that have different wattages. 100-Watt Solar Panel Amps Per Hour; Renogy 300-Watt Solar Panel; Renogy 160-Watt 12 Volt Flexible Monocrystalline Solar Panel; zamp 140-Watt portable solar