

Are lead acid batteries cheaper than lithium-ion batteries?

Lead acid batteries are cheaper than lithium-ion batteries. To find the best energy storage option for you, visit the EnergySage Solar Battery Buyer's Guide. Battery storage is becoming an increasingly popular addition to solar energy systems. Two of the most common battery chemistry types are lithium-ion and lead acid.

How efficient are lithium ion batteries?

Most lithium-ion batteries are 95 percent efficient or more, meaning that 95 percent or more of the energy stored in a lithium-ion battery is actually able to be used. Conversely, lead acid batteries see efficiencies closer to 80 to 85 percent.

What are lithium-ion batteries used for?

Not only are lithium-ion batteries widely used for consumer electronics and electric vehicles, but they also account for over 80% of the more than 190 gigawatt-hours (GWh) of battery energy storage deployed globally through 2023.

Where can I buy the best lithium batteries?

BigBattery offers the best lithium batteries for sale on the market today. Does Your Business Need Power? Have any questions? Talk with us directly using LiveChat.

What is the difference between lithium ion and lithium-ion batteries?

Lithium batteries are designed to be single use due to their primary cell construction, whereas lithium-ion batteries can be recharged to use many times and have secondary cell construction. What are the disadvantages of lithium-ion batteries? Lithium-ion batteries have the potential to overheat and aren't as safe at higher temperatures.

What is a lithium-ion battery and how does it work?

The lithium-ion (Li-ion) battery is the predominant commercial form of rechargeable battery, widely used in portable electronics and electrified transportation.



We pair these RHINO 2s with two cutting-edge 6000W split-phase inverter-chargers from EG4, which each feature their own LCD touch screen display, 2 MPPT inputs, an integrated UPS module for seamless on and off-grid switching, and the ability to handle PV ???



kWh Lithium battery is a beautifully designed solar wall battery, favored by solar installers for its ultra-thin cell thickness (<9cm), hence its catchy name ??? PowerLine. based on 48V 100Ah reliable and practical LiFePO4 batteries. Each battery weighs only 50 kg, so installing them is as easy as 1+1=2!



The VOLTA Battery Lithium Ion STAGE 1, is a cutting-edge innovation that brings you a whopping 5.12kWh capacity, ensuring an uninterrupted power supply for your energy needs. Designed with advanced lithium-ion technology, the STAGE 1 guarantees ???



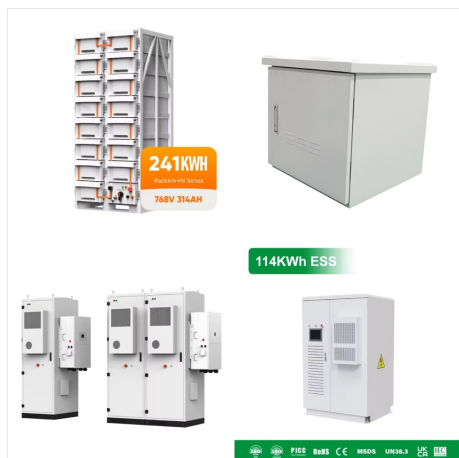
Conclusion Elevate your energy storage experience with the Nexus 12.8V 100Ah Lithium Battery ??? a game-changing solution that harmonizes performance, longevity, and adaptability. Whether you're embarking on off-grid adventures, safeguarding against power outages, or revolutionizing your renewable energy setup, the Nexus battery is your steadfast partner in unlocking the full ???



At its core, a Kilowatt-hour (kWh) is a unit of energy, representing the amount of energy consumed or produced in one hour at a rate of one kilowatt. It serves as the cornerstone for evaluating the capacity and efficiency of energy storage systems. Importance of Battery kWh. Battery kWh plays a pivotal role in determining the storage capacity of a battery.



With more than 5000 cycles at 90% Depth of Discharge (DOD) and an impressive 10-year design life, this battery guarantees enduring and dependable performance. The usability and efficiency of the 5.12kWH Lithium-Ion Battery are exceptional. The nominal capacity of 5.12 KWh and a usable capacity of 4.6 KWh make it a powerful energy storage unit.



Find here Lithium Ion Battery, Lithium Ion Polymer Battery manufacturers, suppliers & exporters in India. Lithium Ion Battery, for Vehicles, 12 V ??? 47,500 Get Latest Price. Capacity. 20 Ah. Shape. Pouch. Usage/Application. E Rickshaw. 3 Kw Hykon Soliz Inverter And Lithium Battery ??? 1,18,000. Get Quote. 3.7v 2500mah Li-ion Battery



6.2KVA/6200W Ecco MPPT Combo 5.12 KWH AH Battery 6X 430W Mono Solar Panels Inverter Combo. Regular price R 28,100 00 R 28,100.00. Ecco 5.5 KVA Pure Sine Wave Load Shedding 5.12 kWh Wall Mount Lithium Battery Combo. ???



BATTERY ??? Unlock Power and Efficiency with the Pylontech UF5000 ??? Your Ultimate Li-Ion Battery Solution. Introducing the Pylontech UF5000, a cutting-edge 5.12 kWh Li-Ion Battery designed to redefine your approach to energy storage. Pylontech has once again revolutionized the game with this innovative battery, featuring a modular design for effortless expansion, ???



lithium-ion battery systems, with a focus on 4-hour duration systems. The projections are \$403/kWh in 2030 and \$159/kWh, \$226/kWh, and \$348/kWh in 2050. Battery variable operations and maintenance costs, lifetimes, and efficiencies are also discussed, with 12 List of Figures Figure ES-1. Battery cost projections for 4-hour lithium-ion



Lithium battery discharge efficiency: 95% Inverter watts (W), and kilowatts (kW = 1000 watts). Click "Calculate" to find the lithium battery runtime. Example: 100Ah lithium battery runtime. Battery capacity: 12v 50Ah (12 x ???)



Dyness: Battery Lithium Ion DL5.0C 5.12KWH
51.2V 100Ah (DYN-DL5.0C) General Data ???
Battery Type: LiFePO4 ??? Nominal Battery
Energy: 5.12kWh ??? Nominal Capacity: 100Ah ???
Nominal Voltage: 51.2V ??? Operating Voltage:
44.8V ??? 57.6V ??? Recommended C Rate: 0.5C
??? Recommended Charge / Discharge Current:
50A ??? Maximum Power Charge Current



Hi Eugene. Alright, the power output of 48V lithium battery will most certainly be higher than 12V deep cycle AGM batteries, so no worries there. Let's check the total capacities: ??? Old setup with deep cycle AGM batteries: $16 \times 12V \times 250Ah = 48,000Wh$ or 48 kWh. ??? New setup with lithium batteries: $5 \times 4.8 \text{ kW} = 24 \text{ kWh}$.



The Green Deer 5.12 kWh lithium-ion battery is a modular, wall-mounted battery system that stores solar energy. It has a nominal voltage of 51.2 V and a nominal capacity of 100 Ah. It uses lithium iron phosphate (LFP) cells, which are known for their long cycle life and safety.



The ecoLinx comes in one size with 8 kW of power output and between 12 and 30 kWh of usable capacity, depending on the model. and increased safety compared to more traditional lithium-ion battery technologies. With their companion computer or phone apps and a solar-plus-storage system, you can view real-time energy usage and solar



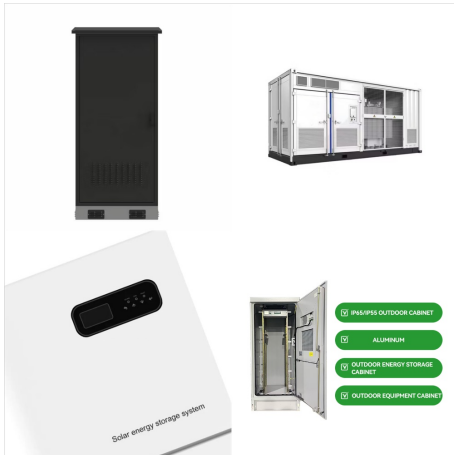
The module consists of lithium ferro phosphate rechargeable batteries with 5.12kWh capacity rated at 51.2V 100Ah with a built-in battery management system. The battery can be expected to remain serviceable for more than 10 years and this takes into consideration that it is charged and discharged once per day at room temperature (25°C).



kWh Lithium ion Battery Self-designed and self-manufactured LFP cell, pack and rack to ensure the highest safety. Thanks to its modular and scalable design, it can be expanded to meet future energy requirements. More than 5000 cycles with 90% DOD and 10+ years design life. Compatible with the most universal hybrid inverters.



Shoto Lithium-ion LifePO4 5.1kWh 51V Battery - 100AH (5.12KWh) for sale online at the Best Prices! Door to Door and Overnight Delivery. FREE Shipping over R650* Secure Checkout. The Shoto 5.12kwh lithium battery, with its 5.12 kWh energy capacity and 4.6 kW peak power, provides a full off-grid solution.



Lithium-ion batteries are lightweight and long-lasting. We offer a full range of li-ion batteries for a variety of devices, in ABS cased packages or shrink wrap. Each li-ion battery pack contains a PCM (Protection Circuit Module) which provides protection against reverse polarity, short circuits and overcharging.



REVOV is excited to offer the R100 2nd LiFe battery ??? offering superior performance at the lowest available cost per cycle for a lithium-iron battery in South Africa. The R100 battery is an automotive-grade lithium-iron phosphate (LiFePO4) battery with a 16-cell configuration offers exceptional performance, with 5kWh capacity, a depth of discharge up to 100% and a 10-year ???



Deye BOS-G Battery Deye BOS-G high-voltage battery is an advanced energy storage solution designed for efficiency and longevity. With a warranty period of ten years, this battery offers a power range from 15 kWh to 60 kWh, making it suitable for various applications.



12V~24V / 12.8V~25.6V. Read more Starter & Cranking Batteries. Understanding kW and kWh in Lithium Batteries: Performance, Capabilities, and Importance. 2024 7 4 Posted by. Redway; Water Scooter Lithium Battery; 21700 / 18650 Lithium-ion Cell; Home; Products; About; Blog;



300 kwh battery price, commercial battery storage costs, customized design according to electricity demand. 300 kWh Lithium Ion Battery Storage System Specifications. Basic Technical Parameters: Cell Chemistry: LiFePO4: Module Energy: 5.12 kWh: Module Nominal Voltage: 51.2V: Module Capacity: 100Ah: Battery Module Qty: 10*6: System Energy



CAML 51.2V 100Ah, 5.12 kWh LiFePO4 Battery - Wall Mount. Save 43%. 5 Years Warranty SKU: CAML10051 WM-LV. filler. Price: Sale price Rs. 115,000 Regular price Rs. 200,000 / CAML Wall Mounted Lithium Ion Battery. Cell Technology. Lithium Iron Phosphate (LiFePO4) Cycle life. 6000 Times@80% DoD. Warranty. 5 Years. Protection. Smart BMS



Lithium-Ion Battery ??? a lithium ion battery and a solar panel with battery backup will keep the lights on in case of an emergency. Buy a solar battery. Model: HP10-Box5 Pro (5.12 kWh). Battery Type: Lithium-ion. Capacity: 5.12kWh. Max 100A (1C Rating). Rated capacity: 100Ah. Easy to install. Compatible with most hybrid inverters.