



These solar wiring diagrams are a complete A-Z solution for a DIY camper electrical build. 2022 at 12:20 pm. Hey Adam! You should check out the 13:27 timestamp in this video: There is no problem pushing 800W of solar panels across 4 AWG wire, but your solar array voltage is too low for an MPPT charge controller to operate optimally.



The following solar panel wiring diagram shows that an 120W, 12V solar panel is directly connected to the 12V charge controller. Battery and inverter are connected to the battery terminals (Positive & Negative) of the charge controller.



Solar Panels Wiring Diagram Installation. When installing solar panels, it is important to have a clear understanding of the wiring diagram. The wiring diagram outlines the layout and connections for the panels, inverters, batteries, and other components in a solar power system. It provides a visual representation of how the system should be

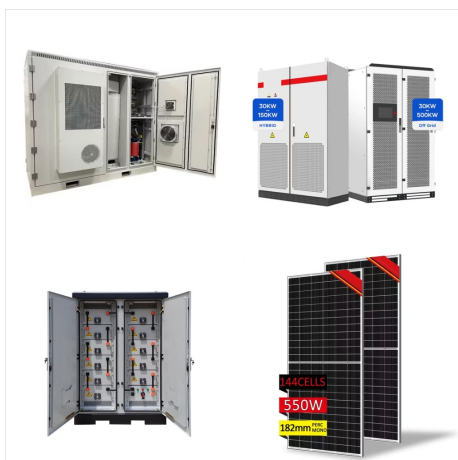
# 12 SOLAR PANEL WIRING DIAGRAM



Step 1: Understand the Wiring Diagram. Here's the wiring diagram showing how to connect a solar panel to a battery: It's important to understand the following: Don't connect a solar panel directly to a battery. Doing so can damage the battery. Instead, connect both battery and solar panel to a solar charge controller. It's recommended

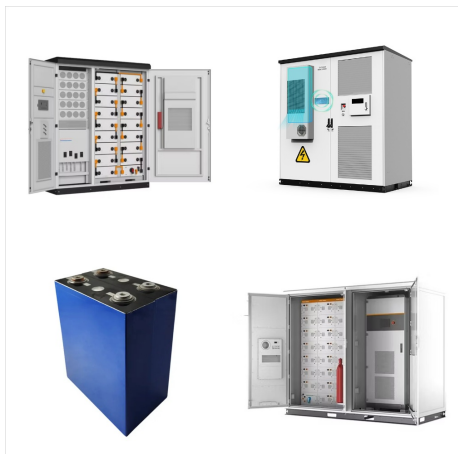


12 volt solar panel wiring diagram (electrical wiring diagram) This one is necessary since it's a circuit diagram that aids you in obtaining a deeper understanding of the required circuitry of your solar panel system. Additionally, it provides you with the wire's length and size you have to purchase. AC Breakers and Sub-panels



12 volt wiring tips: Remember a run is double the distance between the component and the battery. It is best to buy multi stranded wire because it's easier to route and better able to handle the vibrations of a travel trailer. The rv solar panel wiring diagram for 400W system looks like this: Here is a list of parts needed for a 400W

# 12 SOLAR PANEL WIRING DIAGRAM



How-to video on wiring a basic off grid solar electric system - follow along with the included schematic. With this video and the wiring diagram below, you'll learn how to wire a basic off grid solar panel system.



(Source: Electrical Technology) By combining parallel and series connections in a hybrid wiring configuration, you can address issues like shade and high voltage to maximize your electricity output and performance.. Hybrid connections are often the optimal choice for larger solar panel arrays. Typically, you'll work with a professional installer who will assess your ???



Solar panel wiring diagrams are helpful for understanding the various components and connections within a solar power system. By studying 12 volt wiring diagrams, you will be able to better understand how the system works and be more confident in designing and installing your own solar power system. Interpreting Wiring Diagrams. When reading a

# 12 SOLAR PANEL WIRING DIAGRAM



The following wiring diagram shows that the two 12V, 10A, 120W solar panels connected in parallel will charge the two 12V, 100Ah parallel connected batteries as well as power up the AC load through batteries and inverter during the day in normal sunshine. During shading/night (when there is no generating power from solar panels) the battery



Read full step by step guide on wiring a solar battery charge controller. Connect solar panels with solar charge controller easy - A1SolarStore 300W \*  
 $2 \text{ panels} / 12 \text{ V} = 50 \text{ A}$ . If you have several ???



In this article, we'll review the basic principles of wiring systems with a string inverter and how to determine how many solar panels to have in a string. We also review different stringing options such as connecting solar panels in series ???

# 12 SOLAR PANEL WIRING DIAGRAM



Schematic for Wiring Solar Panels in Series. Wiring solar panels in series (plus to minus) will increase the volts, but leave the amps the same. For example, wiring two 18V solar panels together as shown will increase the output from 18V to 36V, but the current will stay at 5.5A. Schematic for Wiring Solar Batteries in Series



Key takeaways: Voltage, current, wattage, and power are key electrical terms for solar panel wiring. Series wiring increases voltage, parallel wiring increases current. Bypass diodes prevent power loss in shaded panels. Consider system ???



The number of panels and voltage of your solar panel array; Your overall system voltage, based on battery bank size and your energy needs; How to Wire Solar Panels in a Solar System. When you are wiring solar panels, you have three choices on how you wire the system ??? Series solar panels ??? plus to minus, plus to minus

# 12 SOLAR PANEL WIRING DIAGRAM



Option 1: Designing Your Own Solar Panel Wiring Diagrams ??? From Concept to Reality. Designing a solar panel wiring diagram is both an art and a science, requiring careful planning, attention to detail, and a thorough understanding of electrical principles. Here's a step-by-step guide to help you bring your solar vision to life:

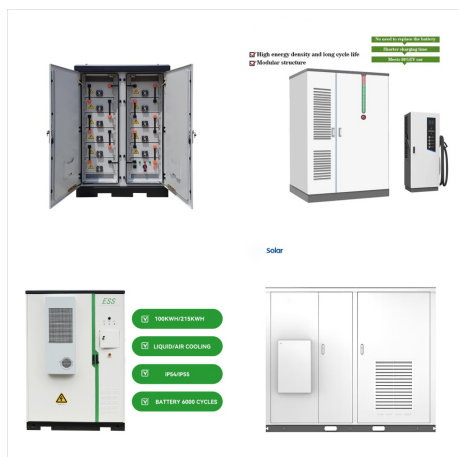


Solar panel wiring, commonly referred to as stringing, involves the connection of multiple solar panels to consolidate their output and integrate it into a home's electrical system or a battery for storage. Each solar panel produces a certain voltage and current depending on its size, material, and technology; stringing them properly



MC4 Connectors: These connectors are designed specifically for solar panels and allow for secure and weatherproof connections. Solar Cable: Use solar-rated cables with appropriate gauge size to minimize power loss and ensure safe wiring. Wire Cutters and Strippers: These tools will help you cut and strip the wires to the required length for connection.

# 12 SOLAR PANEL WIRING DIAGRAM



Wiring Solar Panels in Parallel Diagram. When it comes to wiring solar panels together, there are two main options: series and parallel. In this article, we will focus on wiring solar panels in parallel and provide a diagram to illustrate the setup. Wiring solar panels in parallel means connecting the positive terminals of each panel together



It's so important to string our solar panels correctly. (Firecode pg. 12 & Electrical code pg. 14) Voltage; Power; Understanding this push and pull action explains the intricacy of a solar panel wiring diagram and connecting solar panels ???



Discover all the solar panel wiring basics from terms, to sequence of operations, you'll discover everything you need to know to wire solar panels. (as illustrated in the diagram above). Most modern solar panel installations use single-conductor Photovoltaic (PV) wire, between 10 and 12 gauge AWG. Wiring is required to connect the solar

# 12 SOLAR PANEL WIRING DIAGRAM



Solar panel; Battery; Solar charge controller; Fuse block; LED strip lights; Let's run through each. Solar Panel. You can mount your solar panel on the roof, on the ground, in a window, or outside on the shed's wall. I chose the latter and built a DIY wall mount for my solar panel. Here's how it turned out:



Learn how to wire a 12-volt solar system with a detailed diagram. Get step-by-step instructions on connecting solar panels, batteries, charge controller, and inverter. Ensure efficient and reliable ???

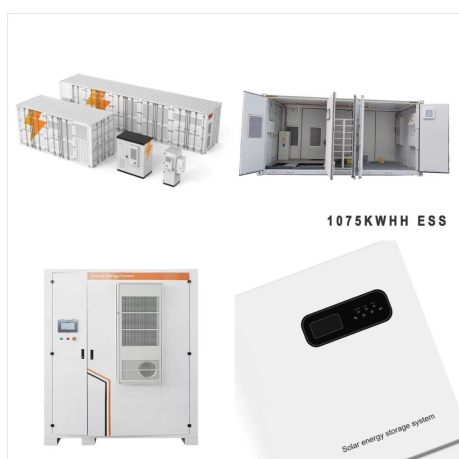


The 4 diagrams below show a 400 watt solar panel wiring diagram wired in parallel and series with 2 x 200w and 4 x100w panel configurations. For a full breakdown of the detail, comparisons, and even an interactive calculator for mixed panels, check out our complete guide to wiring your solar panels in series or parallel.

# 12 SOLAR PANEL WIRING DIAGRAM



The first 2 diagrams below show an 800 watt solar panel wiring diagram wired in parallel and series with 4 x 200w panel configurations. The 3rd diagram shows an 800 watt setup wired in a combination of parallel and series with 8 x 100w panel configurations.



All about Solar Panel Wiring & Installation Diagrams. Step by step PV Panel installation tutorials with Batteries, UPS (Inverter) and load calculation. Breaking News. 50% OFF on Pre-Launching Designs - Ending Soon ; How to Wire Solar Panels in Series & ???



watt solar panel wiring diagram assumes 2 x 100w panels are being fitted. If you happen to be fitting 1 x 200w panel instead, see our 100 watt solar panel wiring diagram. We've included 2 diagrams below. The first ???

# 12 SOLAR PANEL WIRING DIAGRAM



On this page, you can find our installation instructions and some simple wiring diagrams for different setups. MC4 Instructions; Soudaflex40FC.pdf; vehicle-kit-instructions-new.pdf; Single Panel Installation guide and Diagram; 2 Panels in Series Wiring Diagram; 2 Panels in Parallel Wiring Diagram; Off Grid Kit Installation Instructions



A 48v solar panel wiring diagram provides a visual representation of how the various components of your solar panel system are connected together. Efficient and Safe Installation: A 48v solar panel wiring diagram helps ensure that the installation of your solar panel system is done correctly and safely. By following the diagram, you can avoid



Connecting Solar Panels in Parallel Wiring solar panels in parallel means connecting the positive terminal of one panel to the positive terminal of another, and then the negative terminals together as well. These connections are made in a combiner box, and the results of this connection are often called a PV output circuit.

# 12 SOLAR PANEL WIRING DIAGRAM



There are three wiring types for PV modules: series, parallel, and series-parallel. Learning how to wire solar panels requires learning key concepts, choosing the right inverter, ???



Learn how to wire a 12V solar panel system with this straightforward wiring diagram and step-by-step guide. Wiring a 12V solar panel typically involves connecting the positive and negative ???