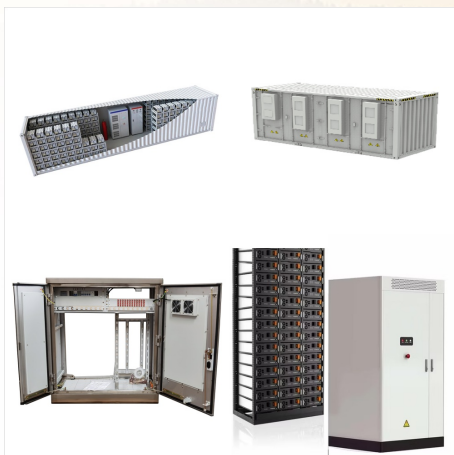


YTX20L-BS Lithium Motorcycle Battery 12V 720A
 12Ah Replacement ETX20L Powersport Battery,
 Motorcycle, ATV, UTV, Scooter, 4 Wheeler and
 Generator Battery etc. 4.3 out of 5 stars. 89. Prime
 Big Deal. \$143.99 \$ 143. 99. Typical price: \$169.99
 \$169.99. Save 5% on 2 select item(s) FREE
 delivery Tue, Oct 15 .



Shop Mighty Max Battery 12-Volt 230 Amps CCA
 Motorcycle Battery in the Power Equipment
 Batteries department at Lowe's . This YTX16-BS is
 a sealed lead-acid (SLA) absorbed glass mat (AGM)
 rechargeable battery. AGM and GEL batteries are
 lead-acid and of ???



We've picked our favourite motorcycle batteries to
 add to your bike. From simple replacements to cool
 upgrades, there will be something perfect for your
 bike. 12V, 4Ah: Type: Lithium Ion

12V LITHIUM BATTERY MOTORCYCLE



Upgrading to a lithium ion motorcycle battery is an easy way to reduce your bike's weight while also increasing its reliability. Lithium batteries outperform their lead-acid and AGM counterparts on every measurable level, including power density, battery life, charging time, temperature sensitivity and weight just to name a few.



Lithium motorcycle batteries are becoming increasingly popular thanks to their small size, lighter weight and non-toxic construction. Rechargeable lithium batteries in the past have been used for small electronic devices such as mobile phones, laptops and digital cameras. (battery output example, 12V, 24V etc.) Ampere hour (Ah) An ampere



Buy NOCO Lithium NLP30, Group 30, 700A Lithium LiFePO4 Motorcycle Battery, 12V 8Ah ATV, UTV, Jet Ski, 4 Wheeler, Quad, Riding Lawn Mower, Tractor, Scooter, PWC, Seadoo, Polaris and Generator Battery: Electronics - Amazon FREE DELIVERY possible on eligible purchases.

12V LITHIUM BATTERY MOTORCYCLE



Powerful lithium powersport batteries for motorcycles, ATVs, UTVs, PWCs, and more. making them the highest performing and longest-lasting batteries for any motorcycle, ATV, UTV, PWC, scooter, or snowmobile. NLP5. 12V 250A Lithium Powersport Battery . \$79.95 [Add to Cart] NLP9. 12V 400A Lithium Powersport Battery . \$99.95 [Add to Cart] NLP14.

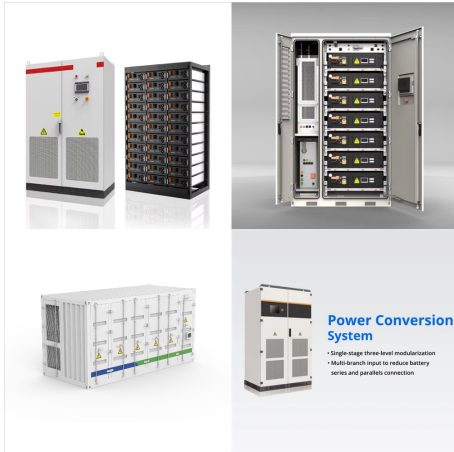


The Battery Tender Lithium Motorcycle Battery is extremely small and very light. This 12V lithium battery weighs just 1.35 lbs and you won't find a handle for lifting it. In fact, you won't need a handle to lift it. It measures 4.5 x 2.8 x 3.4??? with a 2.5 Ah battery capacity. The power delivery is top-notch with 150 CCA and 32WH.



NOCO GENIUS1, 1A Smart Car Battery Charger, 6V and 12V Automotive Charger, Battery Maintainer, Trickle Charger, Float Charger and Desulfator for Motorcycle, ATV, Lithium and Deep Cycle Batteries \$29.95 \$ 29 . 95

12V LITHIUM BATTERY MOTORCYCLE



Lithium Engine Starter Batteries Ionic Lithium 12V S7 | 1220 CA | LiFePO4 Starter Battery + Bluetooth \$ 279.00 Select options This product has multiple variants. The options may be chosen on the product page Our lithium motorcycle batteries are drop-in ready, requiring no modifications or additional fluids, making the transition to better



GRECELL YTX5L-BS Motorcycle Lithium LiFePO4 Battery, 12V 3.5Ah ATV Lithium Motorcycle Battery, YTX4L-BS Powersports Battery Built-in BMS Compatible Dirt Bikes, Jet Ski, Tractor, Lawn Mower, Scooter 4.1 out of 5 stars

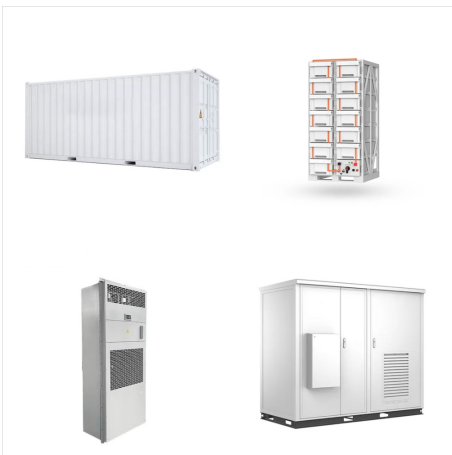


Perhaps the most important factor in favor of lithium motorcycle batteries is that they have a much higher power density than lead-acid batteries. so wears the safety as one as said .working on a kymco 125 rs today fitted a lithium 12v ecking out put meter all over the plays engine running . battery vaults 13,26 .engine off . now the

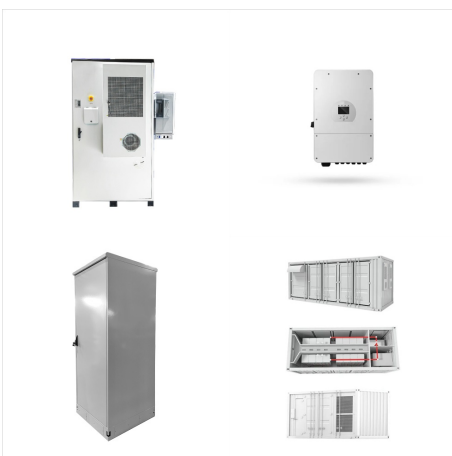
12V LITHIUM BATTERY MOTORCYCLE



Can I use a lithium battery in my motorcycle? Buy now with our battery finder. We cover the basic practical and technical requirements for using a lithium motorcycle battery in your bike. we found that the charging system was operating between 12v and 12.8v. The cause? The regulator/rectifier was failing. So, we replaced it with a modern



Our pick for overall best lithium motorcycle battery is Shorai's LFX line. Boasting a two-year warranty, this package delivers all the perks mentioned above while still being an easy install and requiring minimal maintenance. The drawbacks are the price, which can be quite prohibitive, and many reviews stating cold weather performance leaves



Lithium Motorcycle Batteries. Advantages of Lithium Batteries for Motorcycles. Less volume and weight - 1/3 of normal lead-acid battery; No pollution - does not contain any acid and heavy metals such as lead, cadmium, hydrargyrum NOCO Lithium NLP5 12V Battery. The most highly-designed and engineered lithium powersport battery series ever.

12V LITHIUM BATTERY MOTORCYCLE



The average lifespan of a 12V motorcycle battery can vary depending on several factors, such as usage and maintenance. However, most 12V motorcycle batteries can last between 2-5 years. Which 12V motorcycle battery is the most reliable? The most reliable 12V motorcycle battery is subjective and can depend on personal preference.

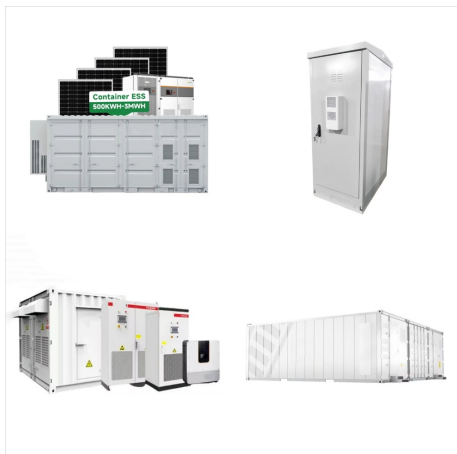


Buy NOCO Lithium NLP20, Group 20, 600A Lithium LiFePO4 Motorcycle Battery, 12V 7Ah ATV, UTV, Jet Ski, 4 Wheeler, Quad, Riding Lawn Mower, Tractor, Scooter, PWC, Seadoo, Polaris and Generator Battery: Electronics - Amazon FREE DELIVERY possible on eligible purchases



Buy Lithium Motorcycle Battery, YTX9A-BS 12V Lithium Battery with Smart Battery Management System, LiFePO4 Engine Start Battery 4AH 460 CCA Starting Batteries for Motorcycles and ATVs-DLFP9A-BS: Batteries - Amazon FREE DELIVERY possible on eligible purchases.

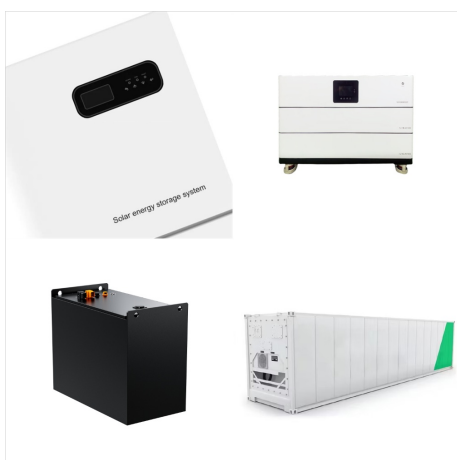
12V LITHIUM BATTERY MOTORCYCLE



The pros and cons lithium motorcycle batteries depend on what you intend to do with this option. Rechargeable batteries can give you a meaningful e-bike experience, especially now that there are more charging stations installed in metro areas. You can avoid the risks of a lead-acid battery at the same time.



Small Case Lithium 12v Powersports Battery. The ultra lightweight AG-401 battery, at a minuscule 4.375 x 1.37 x 3.75 inches (LxWxH to top of terminals), offers extreme power in the most compact size in Lithium Motorsport batteries.



Our editor had a chance to install a Shorai LFX lithium battery in his Kawasaki KLX300 for some testing and there are some very noticeable improvements over the stock lead-acid battery. The most obvious is the fact ???

12V LITHIUM BATTERY MOTORCYCLE



A healthy 12V battery should give a reading between 12.5V and 12.9V (a wet cell should be 12.4V to 12.6V, while an AGM should be 12.7V to 12.9V). forget it as that's the safe upper limit for a lithium motorcycle battery. The worst thing for a lithium battery is being overcharged; you don't want to do that. Ever!



EBL Lithium Motorcycle Battery LiFePO4 YTX4L-BS 12V 2.5Ah 150A Powersports Battery Compatible ATV, UTV, Jet Ski, Quad, Lawn Mower, Tractor, Scooter, Motocross ???Super Power & Quick start??? EBL lithium motorcycle battery is a perfect replacement for a lead-acid battery, over 50,000 starts, and over 3,000 charge cycles.



Hi-Power lightweight ATX12-AH lithium motorcycle/powersports battery with RE-START Technology (built-in jump-starting). Replace YTX12B-BS, more. CTEK 12V Lithium US Smart Charger 4.3A. Rated 4.00 out of 5 \$ 121.99. Add to cart. Add to wishlist. Compare. Quick View. CTEK Comfort Connect Harness \$ 6.99.

12V LITHIUM BATTERY MOTORCYCLE



12 Volt Lithium Motorcycle Battery Powersport
Battery LiFePO4 Engine Start Battery 3AH 250CCA
with BMS 4000+Life Cycles YTX5L-BS YTX20L-BS
Lithium Motorcycle Battery LiFePO4 12.8V 10Ah
580-750CCA Powersports Battery For Motorcycle
Compatible ATV, UTV, Jet Ski, Tractor, Scooter,
PWC, Seadoo



Buy TYKOOL YTX20L-BS/YTX20HL/YB16CL-B
Lithium LiFePO4 Motorcycle Battery, 12V 12Ah,
600CCA, Built in BMS, Powersports Battery,for
ATV,UTV,Jet Ski,PWC,Snowmobile, Quad,Riding
Lawn Mower, tractor: Batteries - Amazon FREE
DELIVERY possible on eligible purchases



What brands make the best motorcycle lithium-ion
batteries? Based on 25 years of experience, we
recommend Shorai, Anti-Gravity, and Scorpion
Stinger. Get Tech Help & Product Advice x
Antigravity ATX-12 12v 360 CA RE-START
Lithium-Ion Battery. Size: 5.9 ???

12V LITHIUM BATTERY MOTORCYCLE



Discover the world of lithium batteries. The most highly-designed and engineered lithium-ion batteries ever. making them the highest performing and longest-lasting batteries for any motorcycle, ATV, UTV, PWC, scooter, or snowmobile. NLP5. 12V 250A Lithium Powersport Battery \$79.95 [Add to Cart] NLP9. 12V 400A Lithium Powersport Battery \$99.



Shed weight & get great start ups with a new Lithium-Ion Motorcycle Battery from Dennis Kirk. Get it fast with Same Day Shipping! 800-969-7501. Contact us: 800-969-7501; We'll ship today if ordered in: Xtreme-Rate 12-Volt LifePo4 LFM Lithium Battery - LFM09L2-BS12 Shorai. \$113.36 Part #: 2001791 Mfg Part #: LFM09L2-BS12.



Specially designed to charge and maintain 12V Lithium batteries, the OptiMate 0.8A is fully automatic and protects against user errors as there are no switches to operate it. This compact charger is perfect for LiFePO4 12V batteries from 3Ah ??? 50Ah. CTEK MXS 0.8 Lithium Motorcycle Battery Charger. I also have one of these CTEK chargers.

12V LITHIUM BATTERY MOTORCYCLE



We sell all the Lithium Motorbike Battery/Dirtbike Batteries. Buy in bulk for retail or for your own devices. Fusion Lithium 12V Deep Cycle Battery V-LFP-12-100. \$903.50. Featured Products . Fusion 12V 124Ah Deep Cycle AGM Battery. \$380.00. SSB LFP20HQ-BS 12V 420CCA Lightweight Lithium Ion Phosphate Motorcycle Battery.