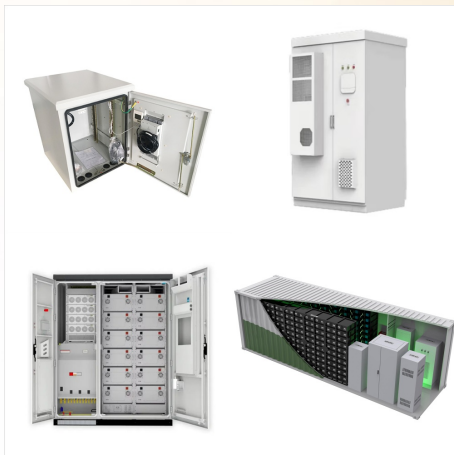




LITHIUM BATTERY SHIPPING GUIDE .
 FEBRUARY 1, 2023 . The following guide provides
 a summary of marking, labeling and paperwork > 1
 GRAM > 1 GRAM > 5 GRAMS FULLY
 REGULATED BATTERY > 2 GRAMS > 2 GRAMS >
 25 GRAMS "Hybrid" Batteries: containing both
 lithium ion cells and lithium metal cells must be
 shipped as UN 3090 or UN 3091,



Battery Comparison Chart Facebook Twitter With so
 many battery choices, you'll need to find the right
 battery type and size for your particular device.
 Energizer provides a battery comparison chart to
 help you choose. There are two basic battery types:
 Primary batteries have a finite life and need to be
 replaced. These include alkaline [a?]



As per the IATA Dangerous Goods Regulations, the
 Packing Instructions for the Lithium Metal Batteries
 are based on the Lithium contents. But the Lithium
 contents are not marked on the Battery casings. All
 that is marked is the Volts. There is no formula that
 we know to help us determine the grams based on
 Volts.

2 GRAMS LITHIUM BATTERY



The changes being proposed in this notice can be summarized into the following categories: (1) Changes to test methods for lithium batteries; (2) revisions to exceptions for small batteries (e.g., those of 1 gram or less of lithium content); (3) elimination of an exception for larger batteries (e.g., cells up to 5 grams of lithium content and



? 173.185 Lithium cells and batteries. As used in this section, consignment means one or more packages of hazardous materials accepted by an operator from one shipper at one time and at one address, receipted for in one lot and moving to one consignee at one destination address. Equipment means the device or apparatus for which the lithium cells or batteries will a?|



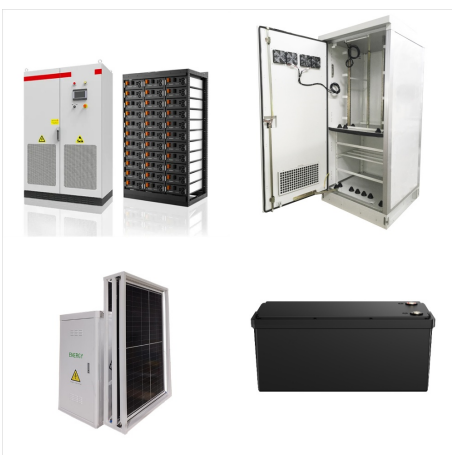
Result: Approximately 22 alkaline AA batteries are needed to equal 500 grams. 2. Zinc-Carbon AA Batteries. Weight: 18 grams; Calculation: Number of batteries=500 g18 g/batterya??27.8text{Number of batteries} = \frac{500 \text{ g}}{18 \text{ g/battery}} approx 27.8 Number of batteries = 18 g/battery 500 g a?? 27.8; Result: Approximately 28



In terms of the amount of lithium content in a battery, it can vary depending on the specific type of lithium-ion battery. However, it is generally estimated that a typical lithium-ion battery contains around 2-3 grams of lithium per cell. This amount may vary depending on the size and capacity of the battery. Manufacturing and Cost Considerations



a?c Determine if lithium batteries identified by customer during pre-move survey are allowed based on the 100 watt-hour or less (20 watt-hours or less per lithium-ion cell) for lithium-ion or 2 grams or less (1 gram or less per lithium metal cell) for lithium metal. a?c Properly package and mark all allowed lithium batteries,



Any who, after some quick weight testing of which battery to use for the lightest amount of added weight, I ultimately found that the AAA rechargeable lithium battery by Tenevolt was the lightest at 8 grams, ultimately totaling the Orochi V2 mouse weight to ~65g-66g. Here's the link to the AAA rechargeable lithium batteries that I used!

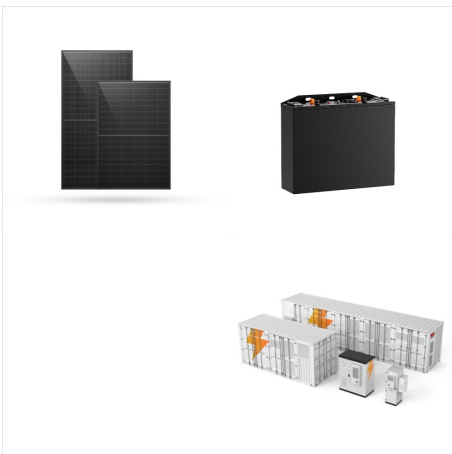
2 GRAMS LITHIUM BATTERY



For lithium batteries that are installed in a device (laptop, cell phone, camera, etc.), see the entry for "portable electronic devices, containing batteries". Size limits: Lithium metal (non-rechargeable) batteries are limited to 2 grams of lithium per battery. Lithium ion (rechargeable) batteries are limited to a rating of 100 watt hours (Wh



It's "the total mass of lithium metal in a battery cannot exceed 2 grams". The lithium-ion battery itself will way much more than that, but the lithium metal in a lithium-ion battery is what they count. A lithium-ion cell contains about 2 % (by mass) of lithium metal.

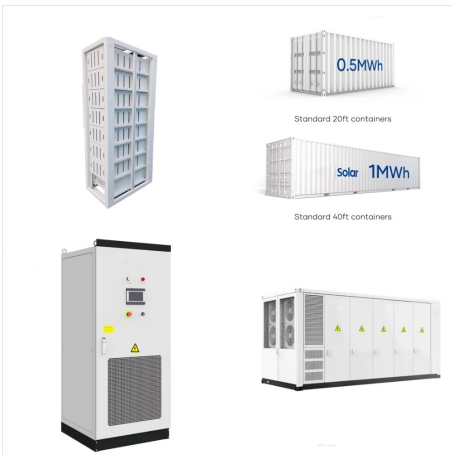


<300 Watt hours OR Lithium Metal: >2 grams and. Lithium Battery Shipping Overview . PGH Safety Jan 2024 (<25 grams) must be additionally marked with the following statement: "LITHIUM BATTERIES (<1 grams for lithium metal cells/<2 grams for lithium metal batteries) and medium lithium cells and batteries (60-300 watt-hours for lithium ion

2 GRAMS LITHIUM BATTERY



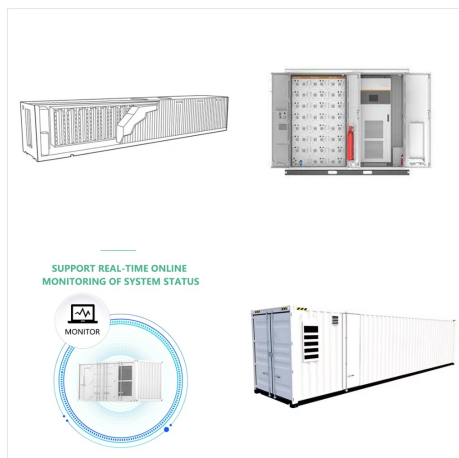
Lithium metal or lithium alloy cell a?? lithium content not more than 1 g. Lithium metal or lithium alloy battery, the aggregate lithium content is not more than 2 g. Lithium-ion cell, the watt-hour rating is not more than 20 Wh. Lithium-ion battery, the watt-hour rating is not more than 100 Wh. Below are the formulas for calculating same.



a?c Determine if lithium batteries identified by customer during pre-move survey are allowed based on the 100 watt-hour or less (20 watt-hours or less per lithium-ion cell) for lithium-ion or 2 grams or less (1 gram or less per lithium metal cell) for lithium metal. a?c Properly package and mark all allowed lithium batteries, including battery



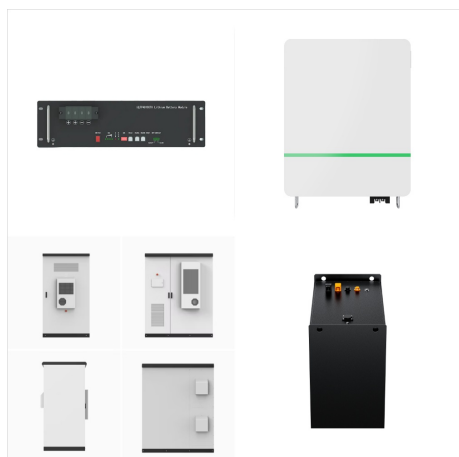
Packing instructions for lithium metal batteries (PI 968) Section II Section IB Section IA
Lithium Metal Content Cell: a?? 0.3 g Battery: a?? 0.3 g Cell: a?? 1.0 g Battery: a?? 2.0 g Cell: a?? 1.0 g Battery: a?? 2.0 g Cell: > 1.0 g Battery: > 2.0 g
Package Limits Quantity No limit a?? 2 batteries or a?? 8 cells > 2 batteries or



In carry-on baggage, batteries with up to 2 grams of lithium content are generally allowed. Power Banks and Portable Chargers: Power banks, also known as portable chargers, are classified as spare batteries by TSA. Therefore, they must comply with the limits mentioned above for both lithium-ion and lithium-metal batteries, depending on the type



LITHIUM BATTERY SHIPPING GUIDE . JANUARY 14, 2020 . The following guide provides a summary of marking, labeling and paperwork FULLY REGULATED BATTERY > 2 GRAMS > 2 GRAMS > 25 GRAMS "Hybrid" Batteries: containing both lithium ion cells and lithium metal cells must be shipped as UN 3090 or



LITHIUM BATTERY SHIPPING GUIDE . JANUARY 1, 2023 . The following guide provides a summary of marking, labeling and paperwork > 1 GRAM > 1 GRAM > 5 GRAMS FULLY REGULATED BATTERY > 2 GRAMS > 2 GRAMS > 25 GRAMS "Hybrid" Batteries: containing both lithium ion cells and lithium metal cells must be shipped as UN 3090 or UN 3091,

2 GRAMS LITHIUM BATTERY



Any who, after some quick weight testing of which battery to use for the lightest amount of added weight, I ultimately found that the AAA rechargeable lithium battery by Tenevolt was the lightest at 8 grams, ultimately totaling the Orochi a?]



2. Lithium-ion batteries - These are commonly found in cellphones, power tools, digital cameras, laptops, children's toys, e-cigarettes, (20 watt-hours or less per lithium-ion cell) and lithium metal batteries containing 2 grams or less of lithium content (1 gram or less per lithium metal cell). The stated limits are not aggregate of all



Large battery means a lithium metal battery or lithium ion battery with a gross mass of more than 12 kg. Large cell means a lithium metal cell in which the lithium content of the anode, when fully charged, is more than 12 g, or in the case of a lithium ion cell, means a cell with a Watt-hour rating of more than 150 Wh.

2 GRAMS LITHIUM BATTERY



2.25, 3, 4.5, 6, 9 grams of Lithium per battery.
Happy the man (or woman) with a 12 cell laptop battery ! Even the 12 cell is so close to the limit that some refining of the calculations may show it falls below the threshold. It seems like this is aimed at laptop battery size or smaller, versus a larger than laptop division.



. Battery Weight: 98 grams; Composition: Lithium Ion; Pros. 2.0mm pitch JST connector for easy integration with Bluetooth speakers and DIY projects. Rechargeable design promotes sustainability and cost-effectiveness. Lightweight at 98 grams, making it easy to handle and install. Cons. A warranty period of only three months. Best Eco-Friendly



The rechargeable lithium battery in Oculus Quest 2 all in one virtual reality headset is a 3640mAh rechargeable lithium ion battery pack with a 14 watt-hour rating that powers the product. It is a single cell battery with a nominal voltage of 3.85 volts and it weighs approximatively 63 grams. General Safety Precautions. WARNING: Fire, Explosion

2 GRAMS LITHIUM BATTERY



lithium metal or lithium alloy batteries, a lithium content of not more than 2 grams; or; lithium ion batteries, a watt-hour rating of not more than 100 Wh. Batteries and cells must be of a type which meets the requirements of each test in the UN Manual of Tests and Criteria, Part III, subsection 38.3. It may be necessary to contact the



Lithium batteries are essential components in many electronic devices, providing reliable power in a compact form. This guide focuses on 3V lithium batteries, specifically popular types like the CR2032 and CR123A, along with their applications, advantages, and considerations. Overview of 3V Lithium Batteries 3V lithium batteries are primary (non a?)



Nickel and lithium-ion batteries should be stored at around 40% state of charge. Lithium-ion batteries might become unstable if not stored at their proper levels. Be sure to know the specifics unique to YOUR battery. To ignore such information that could prove devastating.

2 GRAMS LITHIUM BATTERY



DEWALT DCB203-2 20V MAX Li-Ion Compact Battery, 2-Pack . The DCB203-2 20V MAX Compact Lithium Ion 2-Pack has an extended run-time battery and provides immediate feedback on state of charge with the 3-LED Fuel Gauge System. No memory and virtually no self-discharge for maximum productivity and less downtime; Individual pack weights 1.0 lbs



Passengers are permitted to travel with lithium ion batteries that contain a maximum of 160 watt hours per battery. Any lithium ion battery containing more than 160 watt hours is prohibited from carriage on all passenger aircraft. Lithium ion batteries installed in a personal electronic device can be transported as checked or carry on baggage.



Aggregate lithium content means the sum of the grams of lithium content contained by the cells comprising a battery. The technical definition of a battery and cell, as indicated in the UN Manual of Tests and Criteria, is as Classification (DGR 3.9.2.6) Lithium batteries are classified in Class 9 a?? Miscellaneous dangerous goods as: a?c UN

2 GRAMS LITHIUM BATTERY



Lithium Battery Information Sheet (BIS) 1.

Identification 1.1 Product Name: Tadiran High

Energy Lithium Battery, or Sonnenschein Lithium

Inorganic Lithium Battery Voltage: 3.6 Volts

Chemistry System: Lithium Thionyl chloride Anode:

Lithium metal Cathode: Liquid, Thionyl

chloride-based 1.2 Company: Tadiran Batteries

GmbH