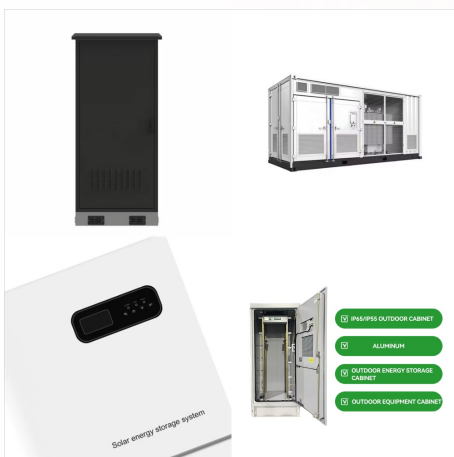




Power up all of your tools with this BLACK+DECKER 20V MAX* 1.5Ah POWERCONNECT battery 2 PK. Compatible with BLACK+DECKER 20V MAX* POWERCONNECT cordless tools and outdoor equipment, these lightweight batteries are easy to install and remove.



AVID POWER 20V MAX 2.0 Ah Lithium Ion Rechargeable Battery, Only Fit for Specified 20V Cordless Tools (See Below for Specific Tools Adapted) 4.3 out of 5 stars 35 1 offer from \$3999 \$39 99



Ensure your 20 volt cordless BLACK+DECKER tools or outdoor power devices have a backup power source with this lightweight lithium-ion battery. This unit resists drainage and retains its charge when not in use, so it's ready to go even after long periods of inactivity.

20-VOLT LITHIUM 1 5 AH BATTERY



With a longer lifespan and the ability to hold its charge five times more than similar nickel cadmium batteries, this Black & Decker's 20-Volt Max Lithium-ion battery is a great choice. It's ready to go when you are, retaining its charge up to 18 ???



This 1.5ah POWERCONNECT?????? battery runtime is ideal for quick home repairs or small home and yard clean ups. for longer duration or heavier load tasks, consider a 2.0ah battery or higher (sold separately) Monitors voltage and temperature ???



The Black & Decker 20V Max 1.5 ah Battery is always ready to help you power through your tasks. The Lithium ion battery holds a charge up to 18 months for your convenience. This power equipment comes with a 2-year limited warranty.

20-VOLT LITHIUM 1 5 AH BATTERY



The Black & Decker 20-volt MAX lithium-ion battery offers a longer lifespan and retains its charge 5x longer than similar 18-volt NiCad batteries. It's compatible with the full line of Black & Decker's 20-volt MAX line of power and gardening tools, and you won't be limited by an extension cord.



With 20V Lithium power at your command you get more power, longer runtime and less downtime. The easy-view fuel gauge tells you exactly how much power remains before you need to grab another battery. This hardworking battery is designed to withstand impact, extreme weather and long times in storage.