

How do I Turn on my MacBook Pro?

Plug in the MagSafe or USB-C power adapter to a power source and to your Mac. Using the built-in keyboard, press Shift-Control-Option on the left side of the keyboard, then press the power button at the same time. Release all keys, then press the power button again to turn on your Mac

How do you connect a Mac Pro to a PCI E sled?

Open the Mac Pro's side access panel. Just below the Drive 4 sled and adjacent to the top PCI-e slot is a small button labeled SMC. Press and hold this button for 10 seconds. Close the Mac Pro's side door. Reconnect the Mac's power cord.

How can I improve my MacBook Pro performance?

Automatic: Have your Mac automatically use the best performance level. High Power: Increase energy usage to improve performance during sustained workloads. See the Apple Support article Use High Power Mode on your 14-inch or 16-inch MacBook Pro. See if your battery's condition is normal, or if service is recommended.

What is a SMC chip on a MacBook Pro?

You'll find an SMC chip in Intel -based MacBook Pro computers (an important thing to bear in mind as we'll discover in a moment). The primary purpose of this chip is to regulate your computer's battery performance, temperature and power management. Resetting it can result in a smoother running machine and it's a very easy operation to perform.

Does iMac Pro have a T2 chip?

If you have an iMac Pro or Mac Mini from 2018 or later or a Mac Pro from 2019 or later, it has an Apple T2 chip. You can confirm this in About This Mac in the Apple menu. Apple announced in March 2021 it's discontinuing the iMac Pro, however, these instructions should still apply to existing models.

Does MacBook Pro have a warranty?

Limited Warranty and Service Your MacBook Pro comes with 90 days of free telephone support and a one-year limited warranty. Purchase the AppleCare Protection Plan to extend your service and support to

# 2012 MACBOOK PRO POWER MANAGEMENT SYSTEM



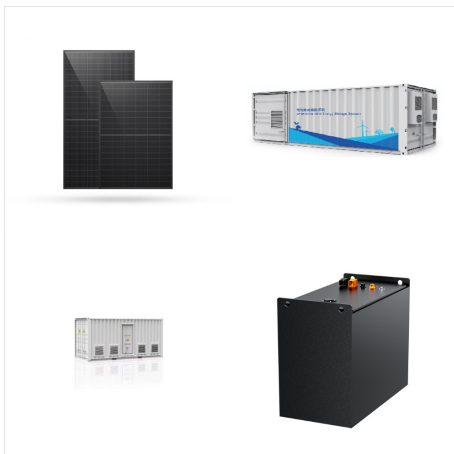
three years from your computer's purchase date.



Release all keys, then press the power button again to turn on your Mac; See Reset the System Management Controller (SMC) on your Mac - Apple Support. For more information on your battery status try: Coconut Battery. Also here is some information on Macbook Pro batteries: About Mac Notebook Batteries-Apple Support. If this does not help:

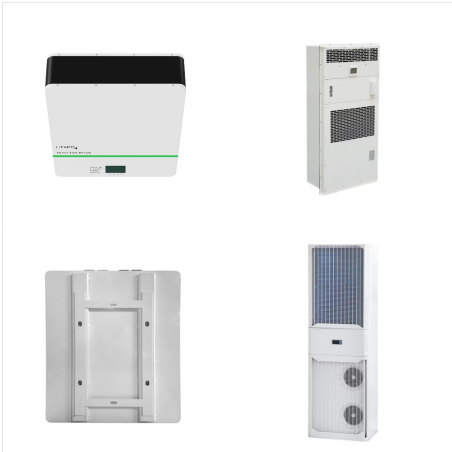


To reset the SMC on a Mac notebook, first determine whether the battery is removable. Most older Mac notebooks have removable batteries. Mac notebooks that have non-removable batteries include MacBook Pro (Early 2009 and later), all models of MacBook Air, MacBook (Late 2009), and MacBook (Retina, 12-inch, Early 2015 and later).

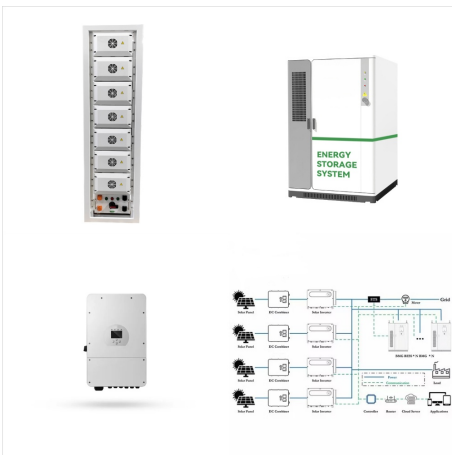


Reset SMC from command line, macbook pro, OS Sierra Hi all, wondering how I can reset SMC from command line. I have an old macbook pro that has sentimental value that is otherwise working fine but it's exhibiting clear SMC issues (fan spinning up spontaneously for no reason, macbook sometimes powers up sometimes doesn't [which is unrelated to actual ???

# 2012 MACBOOK PRO POWER MANAGEMENT SYSTEM



Unplug its power cord. Wait 15 seconds. Now plug the power cable back in. Wait 5 seconds. Turn on your Mac by pressing the power button. MacBook models with a non-removable battery. These models include all MacBook Air models, as well as MacBook and MacBook Pro models introduced in mid-2009 or later. The only exception is the 13-inch MacBook



I run a couple of MacBooks including a Pro Quad i7 2012 17" with the 1 GB graphics card. I can have Photoshop, Indesign and Illustrator open at once without high fans - although it slows to a crawl and fans rage if I run more than 3 or 4 Firefox windows and launch another browser (for website checking) which is a pain.



Reset SMC on MacBook Pro or Air with Apple T2 chip. To reset SMC on your MacBook Pro or MacBook Air running on an Apple T2 chip, you can follow the steps below. Click the Apple logo ( ) ??? Select Shut Down. Press and hold the left Control key + left Option key + right Shift key for 7 seconds. Note: It's fine if your Mac restarts.

# 2012 MACBOOK PRO POWER MANAGEMENT SYSTEM



The MacBook Pro "Core i7" 2.3 15-Inch (Mid-2012/USB 3.0) features a 22 nm "Ivy Bridge" 2.3 GHz Intel "Core i7" processor (3615QM), with four independent processor "cores" on a single silicon chip, a 6 MB shared level 3 cache, 4 GB of 1600 MHz DDR3L SDRAM (PC3-12800) installed in pairs (two 2 GB modules), a 500 GB Serial ATA (5400 RPM) hard



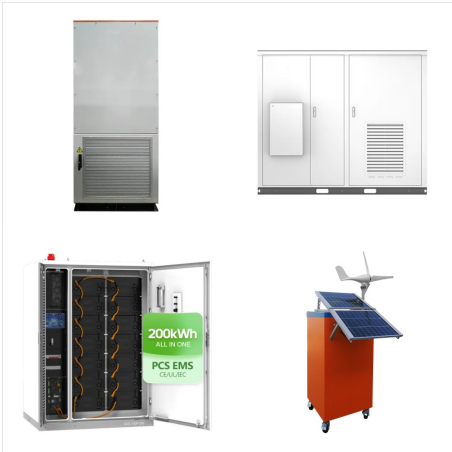
Apple Footer. This site contains user submitted content, comments and opinions and is for informational purposes only. Apple may provide or recommend responses as a possible solution based on the information provided; every potential issue may involve several factors not detailed in the conversations captured in an electronic forum and Apple can therefore provide ???



The red indicator lit up for 2 seconds and the macbook just went out with the magsafe plug. It didn't turn on for 5 seconds and didn't react to anything. After 5 seconds, it turned on and booted into the system (windows 11 with all drivers).



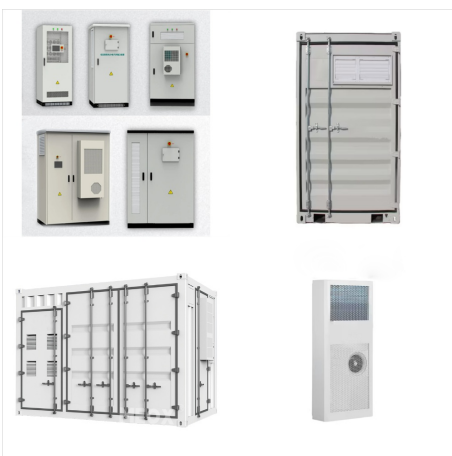
# 2012 MACBOOK PRO POWER MANAGEMENT SYSTEM



Mac models dating back to 2017 support macOS Sonoma (2023), including the 2017 iMac Pro, 2018 and later MacBook Pro, MacBook Air, and Mac mini, 2019 iMac and Mac Pro, and all Mac Studio models. Mac models from 2017 onwards, including MacBook Pro, Air, MacBook, Mac Pro, iMac, iMac Pro, Mac mini, and Mac Studio, support macOS Ventura (2022).



TL;DR. To reset the SMC on a Mac: On MacBooks with removable batteries: Shut down, remove the battery, press the Power button for 5 seconds, reinsert the battery, and turn on the Mac.; On MacBooks with non-removable batteries: Hold Shift ??? + Control ^ + Option ??? and the Power for 10 seconds.; On Mac desktops: Unplug for 15 seconds, reconnect, power on ???



Hold these keys and the power button for 10 seconds. Release all keys. Reconnect the power adapter. Press the power button again to turn on your Mac. Edit . 4 comments . Add a comment . Add Comment Il mio MacBook Pro 2019 nuovo di 3 mesi non vuole accendersi. Ieri sera con la batteria 1% ho spento il mac. Stamattina non vuole avviarsi, non

# 2012 MACBOOK PRO POWER MANAGEMENT SYSTEM



MacBook Pro (13-inch, Mid 2012) - Technical Specifications. Display. 60W MagSafe Power Adapter with cable management system; MagSafe power port. Electrical and Operating Requirements. Line voltage: 100V to 240V AC. Frequency: 50Hz to 60Hz. Operating temperature: 50° to 95° F (10° to 35° C)



Cannot Install PopOS 22.04 LTS on 2012 MacBook Pro - Freezing on Power Management Daemon  
After running into issues with CrossOver and multiple Steam games, I decided to dig out my old 2012 MacBook Pro and install PopOS on it to test out Proton as it seems to have better compatibility than CrossOver for MacOS.



This applies to all MacBook Pro and MacBook models introduced in early 2009 or earlier, as well as the MacBook (13-inch, Mid 2009).. Shut down your Mac. Remove the battery. (If you need help removing it, contact an Apple Store or Apple Authorized Service Provider.) Press and hold the power button for 5 seconds.; Reinstall the battery.

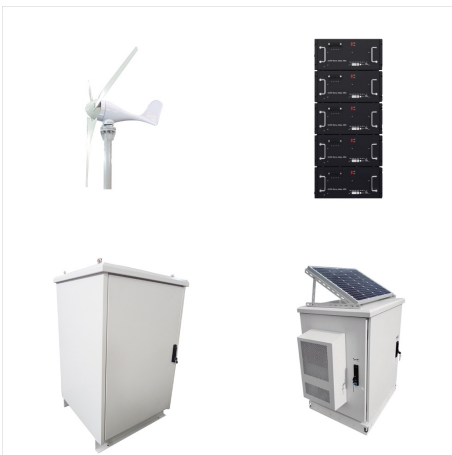
# 2012 MACBOOK PRO POWER MANAGEMENT SYSTEM



On your Mac, choose Apple menu > System Settings, then click Battery in the sidebar. (You may need to scroll down.) Open Battery settings for me. Do any of the following: Click the pop-up menu next to Low Power Mode, then choose Always, Only on Battery, or Only on Power Adapter.



Buy Apple 60W MagSafe 2 Power Adapter for MacBook Pro with 13-inch Retina Display: Chargers & Adapters - Amazon FREE SHIPPING for eligible purchases It works great on my MacBook Pro (late 2012 model) and is even improved over the original." Read more " Security Systems eero WiFi Stream 4K Video in Every Room: Blink Smart Security



Shutdown your MacBook Air / MacBook Pro; Connect the power adapter to the Mac; On the MacBook / Pro's keyboard, hold down the Shift+Control+Option keys and the Power button at the same time; Release all keys and the power button at the same time ??? the little light on the MagSafe adapter may change colors briefly to indicate the SMC has reset

# 2012 MACBOOK PRO POWER MANAGEMENT SYSTEM



Guys i have a 2011 macbook pro 15inch, i have the same problem and i discovered a way to make ot work again.. all u need to do is to reset hold down the cntrol,option, shift keys together with ur power button then aftr just press the power button and wait for it for a while given dt u still have some b3 life on ur mac then leave it for a while.



The power calibration process syncs the computer's power management system with the battery which allows: Your new battery to achieve its fullest charge capacity. Your new battery to reach its full lifespan. The system to accurately display the battery level. Tip: You may have more life in your stock battery than you think!



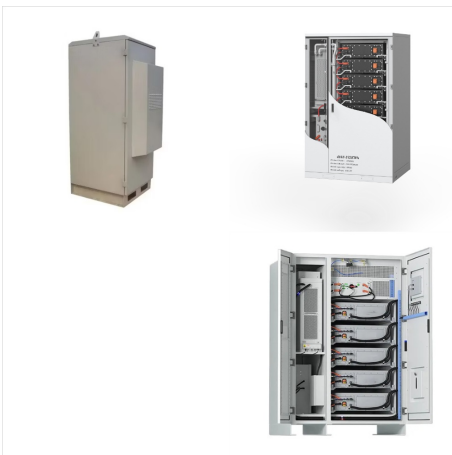
The MacBook Pro "Core i5" 2.5 13-Inch (Mid-2012/USB 3.0) features a 22 nm "Ivy Bridge" 2.5 GHz Intel "Core i5" processor (3210M), with two independent processor "cores" on a single silicon chip, a 3 MB shared level 3 cache, 4 GB of 1600 MHz DDR3L SDRAM (PC3-12800) installed in pairs (two 2 GB modules), a 500 GB Serial ATA (5400 RPM) hard drive



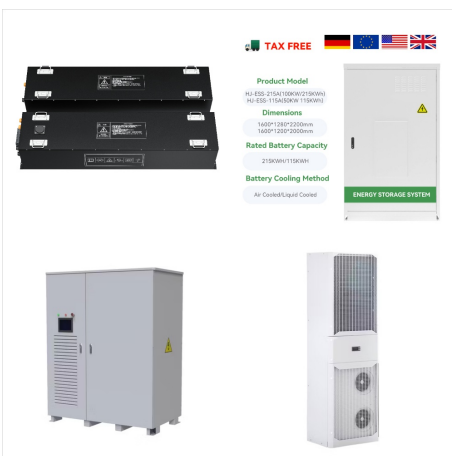
# 2012 MACBOOK PRO POWER MANAGEMENT SYSTEM



Buy Apple 85W MagSafe 2 Power Adapter  
(MacBook Pro (Retina, 15-inch, Mid 2012-2015):  
Chargers & Adapters - Amazon FREE SHIPPING  
for eligible purchases Compatible with MacBook  
Pro (Retina, 15-inch, Mid 2012 - 2015). Inventory  
Management : Amazon Business Everything For  
Your Business: Amazon Fresh Groceries & More



If you want to turn off battery health management on a Mac laptop with an Intel processor, follow these steps: Choose System Preferences from the Apple menu, then click Battery. Click Battery in the sidebar, then click Battery Health. Deselect "Manage battery longevity". Click Turn Off, then click OK.



Resetting SMC on Older MacBook Models. On older models of Macbook that use an Intel processor, you can reset the SMC to resolve some issues. Shut down your MacBook. Connect the power adapter. Press and hold the left Shift, Control, and Option (Alt) keys along with the power button simultaneously for 10 seconds. Release all keys and the power

# 2012 MACBOOK PRO POWER MANAGEMENT SYSTEM



The Power button. Keep all the buttons held for 10 seconds and then release them. Finally, press the power button to turn on your Mac. On desktop Macs without the T2 chip, the process is the same as for those with it. Shut the Mac down, pull the power cord, wait 15 seconds, reattach the cord, wait a further five seconds, then turn on your Mac.