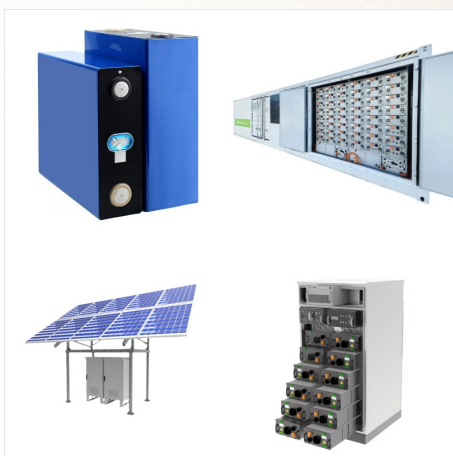
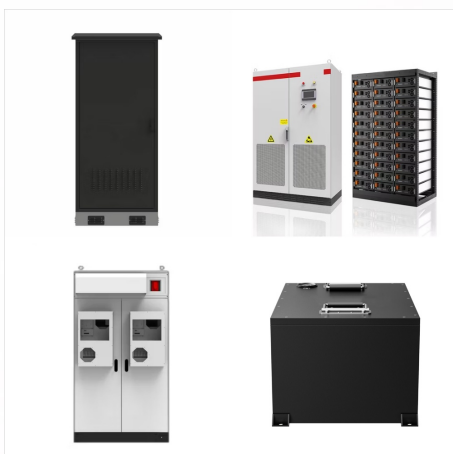




With 11 main islands and several smaller islets, the South Sandwich Islands are also part of the South Georgia British Overseas Territory, despite lying around over 700-kilometres southeast. Volcanic in origin, this island chain is incredibly inhospitable and consists of numerous perilous peaks, some of which remain active while others are snow



Krill at South Georgia & the South Sandwich Islands are not self-sustaining but dependent on the northerly movement of krill in the currents of the Southern Ocean from their spawning grounds under the ice in the Antarctic Peninsula and Weddell Sea. Krill reproduction is highly dependent on sea ice conditions and hence environmental factors.



South Georgia & the South Sandwich Islands are only accessible by sea. There is no visitor accommodation ashore, therefore most people visit by cruise ship or yacht. All visits require a visit permit. Visit permit applications for both commercial and private vessels are submitted by the vessel owners or operators. Individual passengers don't

# 2KW BATTERY BACKUP SOUTH GEORGIA AND SOUTH SANDWICH ISLANDS



The South Georgia and South Sandwich Islands Marine Protected Area (SGSSI-MPA) is one of the world's largest MPAs, covering an area of 1.24 million km<sup>2</sup> (an area 5 x larger than the UK). It was established in 2012 with the aim of conserving the rich marine biodiversity within the Territory's maritime zone and provides a framework for our

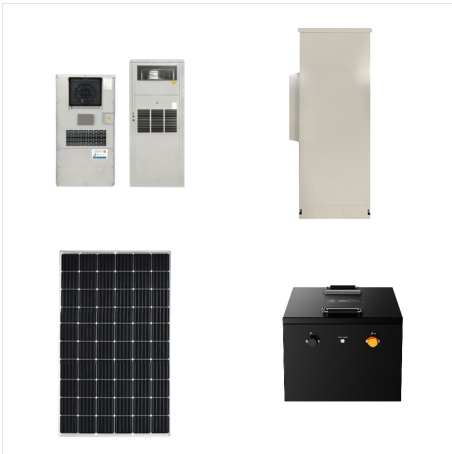


South Georgia and the South Sandwich Islands, SGSSI) ??? brytyjskie terytorium zamorskie na po??udniowym Oceanie Atlantyckim. Le? 1/4 y niedaleko po??udniowego ko??a podbiegunowego. Terytorium obejmuje wyspy: Georgia Po??udniowa oraz Sandwich Po??udniowy, kt?re poprzednio administracyjnie podlega??y pod Falklandy.



South Georgia, sometimes referred to as Isla San Pedro, is an island that is located in the South Atlantic Ocean and is part of the British administration of the South Sandwich Islands and part of the British Overseas Territory of South Georgia. The island is located 1400km from the Falkland Islands and is about 170km long and 35km wide.

# 2KW BATTERY BACKUP SOUTH GEORGIA AND SOUTH SANDWICH ISLANDS



British overseas territory in the Southern Atlantic Ocean. This page was last edited on 27 November 2024, at 11:44. All structured data from the main, Property, Lexeme, and EntitySchema namespaces is available under the Creative Commons CC0 License; text in the other namespaces is available under the Creative Commons Attribution-ShareAlike License; ???

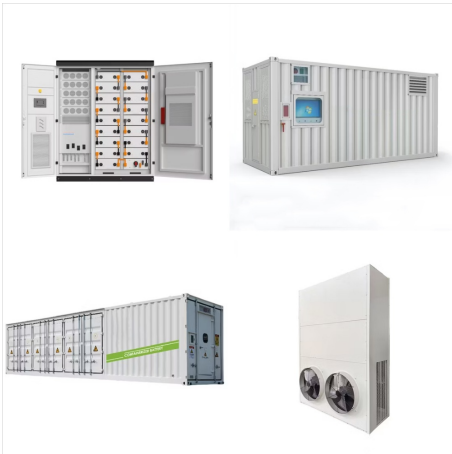


S?dgeorgien und die S?dlichen Sandwichinseln (von der Inselregierung verwendete Abk?rzung SGSSI [1]) sind ein britisches ?berseegebiet im S?datlantik, das aus S?dgeorgien und den S?dlichen Sandwichinseln besteht. Die Inseln sind 3677 km vom S?dpol entfernt. Da sie n?rdlich des 60. Breitengrades s?dlicher Breite liegen, fallen sie nicht in den Anwendungsbereich des ???



S?dgeorgien (englisch: South Georgia, spanisch: Isla San Pedro oder Georgia del Sur) ist sowohl der Name einer einzelnen Insel als auch die Bezeichnung der Inselgruppe, zu der sie geh?rt. Das Gebiet z?hlt politisch zum britisches ?berseegebiet S?dgeorgien und die S?dlichen Sandwichinseln und wird, wie die Falklandinseln, von Argentinien beansprucht.

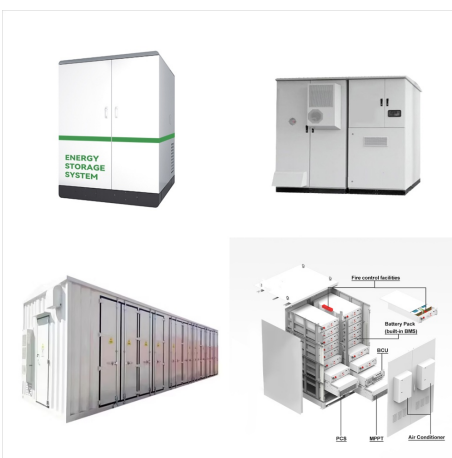
# 2KW BATTERY BACKUP SOUTH GEORGIA AND SOUTH SANDWICH ISLANDS



The South Georgia and South Sandwich Islands Marine Protected Area (SGSSI-MPA) is one of the world's largest MPAs, covering an area of 1.24 million km<sup>2</sup> (an area 5 x larger than the UK). It was established in 2012 with the aim of ???



14. South Georgia Pipit. South Georgia wildlife includes several species unique to the island. The South Georgia pipit is endemic to the archipelago, and is the southernmost songbird in the world. The small bird is the size of a sparrow, and is one of the region's only non-seabirds.



Closeup map of the South Sandwich Islands NASA satellite photograph of Montagu Island. The South Sandwich Islands comprise 11 mostly volcanic islands (excluding tiny satellite islands and offshore rocks), with some active volcanoes. They form an island arc running north???south in the region 56°18'???59°27"S, 26°23'???28°08"W, between about 350 and 500 mi (300 and 430 nmi; ???



# 2KW BATTERY BACKUP SOUTH GEORGIA AND SOUTH SANDWICH ISLANDS



The Antarctic Treaty of 1962 resulted in a separation of the British Antarctic Territory from the UK Dependencies. South Georgia then received its first stamps. In 1985 the Falkland Islands Dependencies ceased to exist and South Georgia & the South Sandwich Islands came into existence as a UK overseas territory.



The most powerful whole-home backup solution-7.2kW-21.6kW output with up to 3 inverters-Up to 90kWh capacity with 3 inverters and 15 batteries-5.6kW-16.8kW solar input with up to 3 inverters-Online UPS, 0-ms transfer time-LFP battery Power Input / Output Port 120V/240V 30A 3600W Max / 7200W Max Notes Free Delivery Pow



South Georgia and South Sandwich Islands are to become a Terrestrial Protected Area which would further protect the most diverse populations of seabirds and marine mammals on Earth, including 25% of the world's gentoo penguins. r/UpliftingNews. r/UpliftingNews.

# 2KW BATTERY BACKUP SOUTH GEORGIA AND SOUTH SANDWICH ISLANDS



GSGSSI would like to congratulate Tristan da Cunha on the establishment of their new Marine Protection Zone. With the establishment of this protected area, Tristan da Cunha joins South Georgia & the South Sandwich Islands and other UK Overseas Territories, including Ascension, St Helena, Pitcairn and the British Indian Ocean Territory, in making a lasting commitment to ???

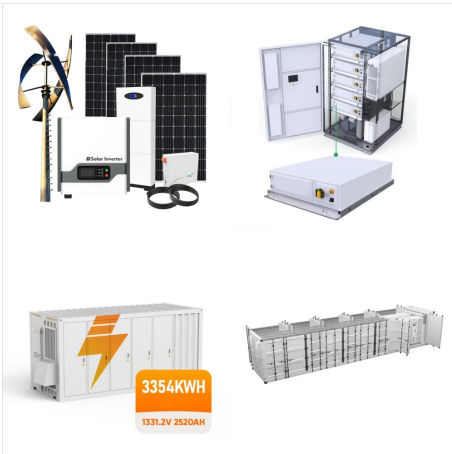


Together, South Georgia and the South Sandwich Islands form part of the Scotia Arc, which extends from the tip of South America to Antarctica (and also includes the South Shetland and South Orkney Islands, though these are not part of the British dependency). The island of South Georgia is 105 mi (170 km) long, and about 25 mi (40 km) wide.



Summary. Welcome to our South Georgia & Antarctic Odyssey featuring the South Sandwich Islands expedition.. On this epic voyage, not only will you explore the famed white continent, discover the Falklands~Malvinas, ???

# 2KW BATTERY BACKUP SOUTH GEORGIA AND SOUTH SANDWICH ISLANDS



? 1/4 ?? 1/4 ? South Georgia and the South  
Sandwich Islands, SGSSI ? 1/4 ????? ,??? „3592  
???



The ultimate goal of the Argentinian forces was to  
annex the South Sandwich Islands, South Georgia,  
and the Falklands. Despite these plans, however,  
the British moved in to re-take the territory, and on  
June 20, 1982, the British were successful in  
defeating the invading Argentine forces. By 1985,  
both South Georgia and the South Sandwich



Frequently asked questions. Want to know about  
travelling to South Georgia and the South Sandwich  
Islands? We have put together a list of the most  
frequently asked questions from our users such as:  
What is the cheapest mode of transport?, What is  
the quickest option?, How much do tickets usually  
cost? and many more.