

How much power does a 3 phase solar inverter have?

Max. Apparent Power [VA]The LIVOLTEK 3 phase solar inverter from 4 to 25 kw is developed for residential or commercial customers who need a three-phase rooftop model.

What is livoltek 3 phase hybrid inverter?

As the core of the energy storage solution, LIVOLTEK three phase hybrid inverter offers flexible and scalable solutions for both residential and commercial applications. With the ability of scalable battery storage, the high-voltage inverter facilitates powerful

What is Solis s6-gc3p (150-200)k07-nd 3-phase string inverter?

This inverter provides more efficient, safe, intelligent, and economical high-power inverter solutions for C&I PV systems. The S6-GC3P (150-200)K07-ND three-phase string inverter is the representative product of the new generation of Solis C&I solutions.

What is the MPPT power supply for a high-power PV module?

With an MPPT current of up to 54A, it is perfect for all 182/210mm high-power PV modules and supports more than a 150% DC/AC ratio, bringing more yield. It features intelligent DC breaking and intelligent AC-DC terminal temperature monitoring functions to improve system safety performance.

Why should you use Solis cloud inverter for C&I PV systems?

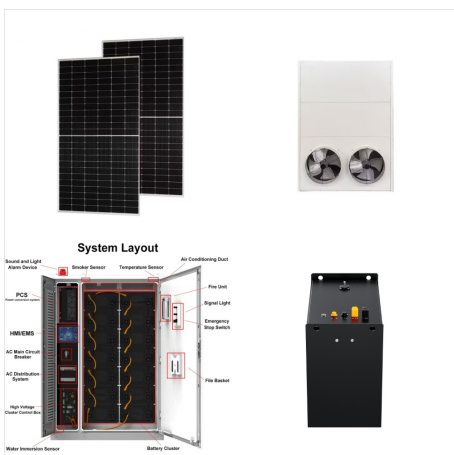
Combined with the rich online O&M tools provided by the Solis cloud platform, it can effectively reduce O&M costs, simplify O&M, and improve system efficiency. This inverter provides more efficient, safe, intelligent, and economical high-power inverter solutions for C&I PV systems.



The SolaX X3 Hybrid 5.0kW G4 is the 4th generation of the SolaX Three-Phase Hybrid Inverter range. The G4 has been designed and developed using the very latest solar technology. SolaX have pushed back the boundaries for what is ???



3-Phase Hybrid Inverters. Hybrid inverters are the heart of a solar energy storage system and enable homes or businesses to increase the amount of self-consumption of solar energy by storing excess energy during the day. 3-phase ???



The S6-GC3P(150-200)K07-ND three-phase string inverter is the representative product of the new generation of Solis C& I solutions. With an MPPT current of up to 48A, it is perfect for all ???



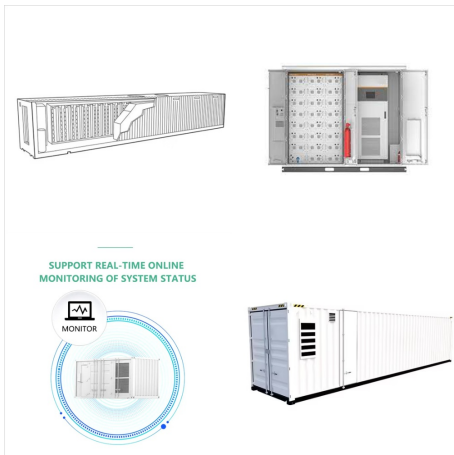
Tenka Power Center inverters provide up to 150% PV array oversizing and 100% unbalanced three-phase AC output during EPS mode. With an IP66 rating, they are durable for outdoor use. A minimum DC input of 60V and a wide MPP ???



The Tenka Power Center 7100 Series is a breakthrough in three-phase solar inverters, tailored for medium size PV systems. It's designed for exceptional energy yields, boasting 150% PV array oversizing and up to 5 MPPTs for ???



Why X3 MIC G2 Experience the power of the X3-MIC G2 inverter, combining high efficiency, safety, and intelligent features. With a maximum efficiency of 98.3% and 200% oversizing capability, maximize energy generation with ease. Enjoy ???



The LIVOLTEK

GT3-4/5/8/10/12/15/17/20/22/25K-D1 PV inverter is developed for residential or commercial customers who need a three-phase rooftop model. The Shade Fix integrated shading management system ensures that the inverter ???



So, what is a three-phase inverter and how does it operate? An inverter is the device responsible for converting the direct current (DC) power generated by sources like solar panels into alternating current (AC) power ??? ???



Three phase versions of the SolarEdge inverters for use with optimisers. Ideal for commercial systems. These combine sophisticated digital control technology with efficient power conversion architecture to achieve superior solar power ???



15kW transformerless grid tie inverter for three phase on grid solar power system, which converts 200-820V wide DC input voltage to 208V/ 240V/ 380V AC output voltage feed the power into the grid. Grid tied pv inverter with LCD display, can ???



The transformerless, three-phase Fronius Symo Advanced 24.0-3 string inverter handles up to 31,000 Watt DC input and delivers 24,000 Watt AC output for commercial solar installations ???