

What types of battery tripping units are available?

We supply a comprehensive range of 24V,30V,48V,50V,110V or 240VDC battery tripping units (BTUs) and associated monitoring systems to suit your site. Battery tripping units are used in industrial areas where the application of a DC supply in substations and switch rooms is required for the protection and tripping of circuit breakers.

How many volts does a battery tripping unit have?

Our Battery tripping units have a standard range,we build 30v,50v,110v and 240vunits,Bespoke BTU's can be designed and built to suit your requirements. Our basic model starts at 5ah with voltmeter and supply light with test button right the way through to complex units with 30ah and as many weird and wonderful gadgets you require.

How long does it take to get a 30V battery tripping unit?

We keep a stock of 30V wall mounted Battery Tripping Units for immediate dispatch. Other voltages are made to order - typical lead time 1-3 weeks. Call our sales engineers now on +44 (0) 191 414 2916 to discuss your Battery Tripping Unit requirements. This is a small selection of the equipment we have available.

What is a DST tripping battery?

The Dartpoint DST range of tripping battery units provide a DC supply in electrical substations and switch rooms for the tripping and closing of circuit breakers. The units are highly reliable and utilise maintenance-free nickel cadmium batterieswhich give high discharge currents and long life.

What is a battery trip unit?

If a fault is detected within the supply, a Battery Trip Unit is energised, and will trip the system to cut off the supply to the industrial equipment prior to any failure taking place. It is essential for Battery Tripping Units to be installed properly right from the outset, plus they need to be maintained thoroughly and on a regular basis.

Are our Battery tripping units built in house?

All of our battery tripping units are built in housewith both off the shelf models and bespoke units,each to suit your requirements. Our Battery tripping units have a standard range,we build 30v,50v,110v and 240v units,Bespoke BTU's can be designed and built to suit your requirements.



Switchgear Battery trip unit. 240v Input; 30v Output; 5Ah; No standing charge; Voltmeter & charge button; 2 outgoing ways; Switchgear battery tripping unit. Perfect for Ring Main Units, Small switchboards, E stop buttons and Low Voltage Switchgear High Voltage Switchgear. Additional information. Weight: 30 kg: Dimensions:



What are battery tripping units, and what do I need for them? View Basket X. Call 02476 214799 Home Products. DC Power Supplies; DC DC Converters Our range of MT power supply and battery chargers are a perfect for use as part of ???



30V batteries, battery chargers, dc distribution boards & associated auxiliary cabling which Cell The basic electro-chemical unit used to generate or store electrical energy ENA TS 48-4 DC Relays Associated With Tripping Function In Protection Systems ENA TS 50-18 Design And Application Of Ancillary Electrical Equipment



Consult Power and Distribution Transformers's  
Wilson Chargetec - Battery Chargers / Battery Trip  
Units brochure on DirectIndustry. Page: 1/2. Exhibit  
with us {{>currencyLabel}} Back  
{{>currenciesTemplate}} English. Back; C200 C300  
C400 Sealed VRLA battery capacity 2.5Ah 8Ah 8AH  
8Ah 8Ah 24/50V - 24Ah 30V - 26Ah 24Ah Charger  
size 50W 100W



Battery Tripping Units (B.T.U.) for use in electrical  
substations to supply the impulse tripping and  
closing currents associated with high tension  
switchgear breakers whilst in most cases supplying  
any permanent standing load requirements of the  
switchgear panels.



standard dc switch tripping / closing battery units  
Available in a Range of 24V, 30V, 50V & 110V With  
& Without Standing Loads. All Units come with  
Constant Current Chargers & Maintained ???



Battery trip units are often used in industrial areas where the. Contact Us 01543 897 363. Search for: Skip to content. Home; About Us. Community; Capabilities. HV & LV Switchgear. Unit 6, Lion's Den Estate, Lion's Den Hammerwich, Burntwood Staffordshire, WS7 OLB Tel: 01543 897363 Fax: 01543 624515



Manufacturer of Switch Tripping Industrial Battery Chargers - switch trip switchgear trippers battery standby power manufacture, your source and supply, supplier of robust units 30V switch tripping unit with standing load (P4205) Colour photos (276k) Technical data (197k) 48V switch tripping unit with standing load (P4215)



The UK's Largest Stock of Switchgear Accessories and Spares Complementing our switchgear supply and installation business, we supply battery tripping units, spare parts and auxiliary equipment for all common UK installed 11kV and low voltage switchgear types. Most items are held in stock and available for immediate dispatch. Our range covers UK origin MV/HV and [??]





Green Premium TM label is Schneider Electric's commitment to delivering products with best-in-class environmental performance. Green Premium promises compliance with the latest regulations, transparency on environmental impacts, as well as circular and low-CO<sub>2</sub> products. Guide to assessing product sustainability is a white paper that clarifies global eco-label ???



One of the primary functions of a battery tripping unit is to provide a reliable source of power to trip circuit breakers in the event of a power failure or an emergency. Here's why this is critical:  
Customizable Solutions: BTUs can be tailored to specific needs, including voltage levels (e.g., 24V, 30V, 48V, 110V) and battery capacities



Protecting power and distribution equipment from major faults will aid in preventing infrastructure damage and unnecessary power supply losses. Battery operated tripping units are used to open (trip) or re-close HT breakers in a substation during power supply failures. Short bursts of high currents from a battery bank in the substation switch room is used to energize open and close ???



Chapter 13: Principles of Unit Protection. Chapter 14: Feeder Protection Cable Feeders and Overhead Lines. Chapter 15: Transformer Protection. The relay/circuit breaker combination depends entirely on the tripping battery for successful operation. Without this, relays and breakers will not operate, becoming "solid", making their capital



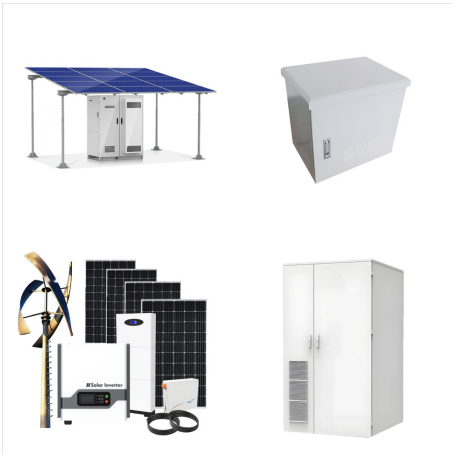
EQUIPMENT: 30V DC. combined battery/charger tripping supply unit. UNIT REFERENCE: TSU3012-1. HOUSING: Wall mounting, welded fabrication, steel enclosure with hinged door and un-drilled gland plates. Dimensions: 480mm high x 240mm wide x 150mm



This specification details the technical requirement for 30V batteries and chargers for use in 11kV or 20kV distribution substations where DC supplies are required for the operation of protection ???



30v 8ah Battery Trip unit. 24v 8ah Battery Trip unit→ Get in Touch. Add to wishlist. Facebook Twitter LinkedIn Google + Email. Description Size Guide Additional information More Products Description. Switchgear Battery trip unit. 240v Input; 24v Output; 5Ah; 0.2A standing charge;



Switch Tripping units, with and without standing loads. 30V & 48V switch tripping units and Sealed Lead Acid battery packs are all in stock. Click for access to full Technical details, and other Slencrest Units. Contract Production. Board "through hole" and Unit assembly carried out to the highest standards. Small to medium production runs



Switchgear Battery trip unit. 240v Input; 30v Output; 8Ah; 2A standing charge; Voltmeter & charge button; 2 outgoing ways; Switchgear battery tripping unit. Perfect for Ring Main Units, Small switchboards, E stop buttons and Low Voltage Switchgear High Voltage Switchgear. Additional information. Weight: 30 kg: Dimensions:



FUKUDA Industrial heavy duty constant current limiting thyristor controlled Rectifier/ Battery Charger are designed for all applications requiring DC Power Supply. Output rating: 24/30/48/110/220 VDC and 3Amps ??? 1200Amps.



30v 5ah Battery Trip unit. Add to basket. Add to wishlist. Quick View. Add to wishlist. Battery Trip Unit 24v 8ah Battery Trip unit. Add to basket. Add to wishlist. Quick View. Add to wishlist. Battery Trip Unit 48v 5ah Battery Trip unit. Featured Products. Masterpact NW25 H1 2500A 4 Pole Breaker with Micrologic 5.0A.



30v 5ah Battery Trip unit. Featured Products. Masterpact NW25 H1 2500A 4 Pole Breaker with Micrologic 5.0A. 0 out of 5. MFVU14 60V. 0 out of 5. 110V AC-DC Shunt opening / release coil for SACE Emax. 0 out of 5. Best Selling Products. Schneider MN/UVR Under Voltage Coil 200 / 250v 33671 (New Boxed) 0 out of 5.





We design and manufacture a full portfolio of industrial DC power products that range from battery chargers to backup systems, battery tripping units, DC to DC converters, battery management systems and harsh environment power supply units, to mention a few.



The TRB Zener tripping unit is an auxiliary device energized by protective relays to trip circuit breakers in a double trip relaying scheme. It is suitable for cases where the total trip current of the two breakers is within the relay contact rating, usually 30 amperes.



Battery System Type Switch Tripping Only STL  
Switch Tripping and Load Supporting TEL  
Telecoms/SCADA batteries 110/36 Voltage Level of  
Battery system 30 30V Battery System 48/36 48V  
Battery System with 36V Tap-off for switch tripping  
48 48V Battery System 110 110V Battery System  
(108V VRLA)

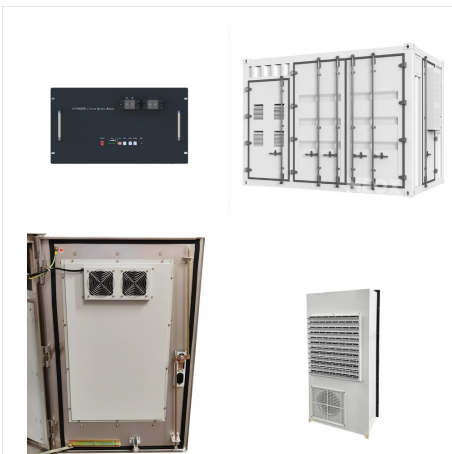


NPS/003/002 ??? Technical Specification for 30V Distribution Tripping Battery and Charger Systems

1. Purpose ??? Enhanced Switch Tripping Unit for customer and special STANDING LOAD applications consisting of Secondary Battery cells complete with a suitable charging/monitoring/alarm facility. This unit will



Exact Match Results (7 Companies Found for Battery Tripping Units) Showing 1 to 7: Brooknes Supplies & Service Ltd., Dartpoint Ltd. Metron Eledyne. PCA Engineering. Richard Wilson Dencol Ltd. Static Power. WordsWorth International. Limit companies to



STANDARD DC SWITCH TRIPPING / CLOSING BATTERY UNITS. Available in a Range of 24V, 30V, 50V & 110V With & Without Standing Loads.

30V DC Maintained Tripping Unit. 3.0A Standling Load. 8.0Ah Sealed NiCad Batteries. TSU5012M-2.

50V DC Maintained Tripping Unit. 0.5A Standling Load. 1.6Ah Sealed NiCad Batteries. TSU5040M-3.



Switchgear Tripping Battery Units - DST Series. The Dartpoint DST range of tripping battery units provide a DC supply in electrical substations and switch rooms for the tripping and closing of circuit breakers. Easy to install; Nickel cadmium battery; ???