

Con Edison and its customers continue to make progress in the transition to a clean energy future, according to the first quarter (Q1) update for 2024 released today. Among the highlights, in the last year, Con Edison customers have increased their rooftop solar capacity by 18 percent, adding 92 megawatts (MW).



News & Media Center; News; Con Edison Crews Mobilizing For Strong Winds Con Edison is mobilizing to respond to any service problems that may be caused by the strong winds expected to hit the region Sunday evening into Monday. combination of prolonged gusty winds and widespread saturated soil conditions can cause trees and branches to

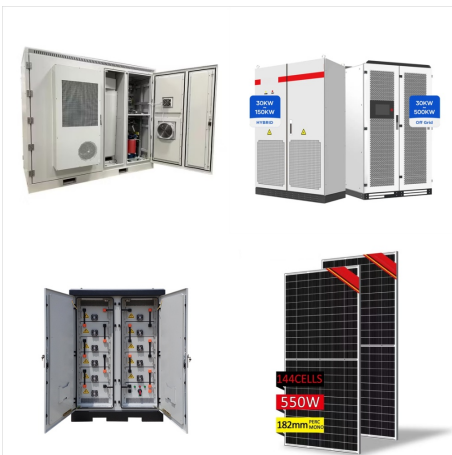


"Con Edison supports the New York City and State environmental goals and is working with customers to interconnect clean, renewable solar power and other renewables to run their homes and businesses." Con Edison customers have installed residential systems ranging from a single kilowatt to arrays up to 5 MW on large commercial buildings.

31 2016 HTTPS CONED COM EN ABOUT-CON-EDISON MEDIA NEWS 20161031 SOLAR-POWER



Con Edison advises customers in the affected areas . Customers can report outages and check service restoration status at or by calling 1-800-75-CONED (1-800-752-6633) When reporting an outage, customers should have their Con Edison account number available, if possible, and report whether their neighbors also have lost power.



Con Edison is activating 250 mutual aid workers to augment company crews in restoring any outages Storm Lorraine may cause with its forecasted heavy, wet snow and strong winds. The crews are scheduled to arrive tonight, in time for the start of rain, which will change to snow in some parts of Con Edison's service area.



Con Edison is offering, free of charge, a device that can save upwards of \$1,000 for a residential customer installing a new solar array. The Smart ConnectDER, built by ConnectDER, Con Edison's partner on the ???

31 2016 HTTPS CONED COM EN ABOUT-CON-EDISON MEDIA NEWS 20161031 SOLAR-POWER



Con Edison crews are working to restore power to about 33,000 electric customers in the southeast Brooklyn neighborhoods due to continued heat and high usage. News & Media Center; News; Con Edison Working To Restore Power To Approximately 33,000 Customer Outages In Some Southeast Brooklyn Neighborhoods or with our mobile app for iOS or

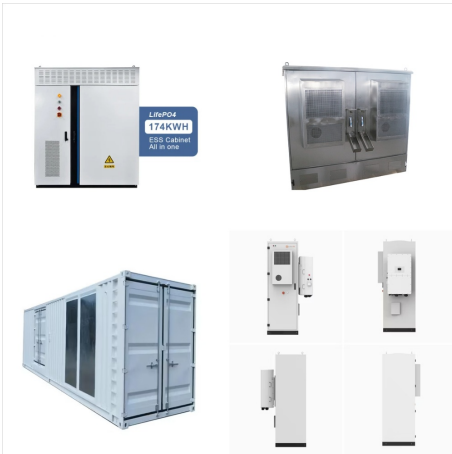


In the event of outages, Con Edison will be ready to respond, supported by line crews, damage assessors, and site safety personnel, along with customer service operations and the Con Edison teams that support those functions. Con Edison urges members of the public to stay away from all downed lines. Those lines could be live.

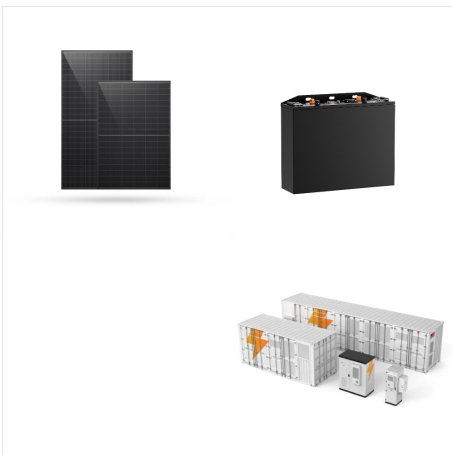


Weather updates and news on electrical service can be heard on local radio and television stations. For more storm tips and preparation, go to ; To ensure public safety, Con Edison may guard downed wires until crews make repairs. Company personnel may be in unmarked cars but will always have Con Edison identification.

31 2016 HTTPS CONED COM EN ABOUT-CON-EDISON MEDIA NEWS 20161031 SOLAR-POWER



Con Edison urges members of the public to stay away from downed wires, as they may be live. If you see downed wires, report them to your local police department or Con Edison by calling 1-800-75-CONED. Do not touch downed wires with your hands or any object. For your safety, Con Edison workers may guard downed wires until crews make repairs.



Con Edison recently filed its 2023 Distributed System Implementation Plan with the New York Public Service Commission, providing detailed roadmaps for integrating more local clean energy resources while advancing New York's climate goals. "The clean energy transition is critical for New York, and it will take a diverse range of clean energy resources operating in ???



Forecast. A 2023 study by the Environmental Defense Fund found that Con Edison's PowerReady (formerly Make Ready) program "would have a neutral-to-beneficial impact on rates." The report indicated that revenue generated by the program may reduce costs for all ratepayers. Trends. There are 69,000 EVs on the road in NYC and Westchester, and as of the ???

31 2016 HTTPS CONED COM EN ABOUT-CON-EDISON MEDIA NEWS 20161031 SOLAR-POWER



Con Edison crews have restored service to nearly 9,000 customers in Westchester County and are working to restore the approximately 2,600 customers who remain out of service. News & Media Center; News; Con Edison Crews Restoring Customers In Westchester County . Heavy rain and strong winds pushed tree limbs into overhead power lines



In total, Con Edison customers installed 46.8 MW of storage capacity. Con Edison has also installed 9.5 MW of utility-owned storage for a total storage capacity of 55.3 MW. Con Edison continues to work with state and local partners to make it easier for customers to install solar and battery storage projects.

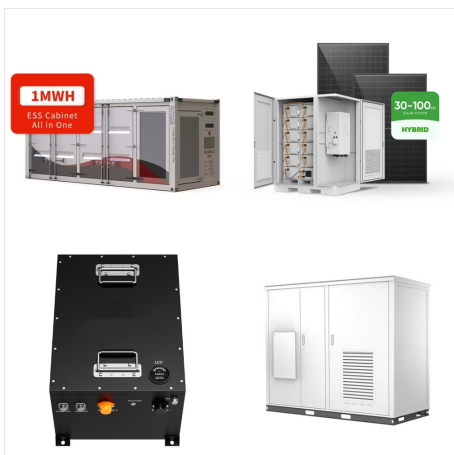


Once your system installation and inspections are complete, your contractor will need to notify Con Edison (PDF) to request a net meter to measure your private solar generation credits. The net meter records the difference between the amount of electricity your solar puts into the energy grid and how much you take out.

31 2016 HTTPS CONED COM EN ABOUT-CON-EDISON MEDIA NEWS 20161031 SOLAR-POWER



Con Edison contributed \$22.6 billion in economic impact to New York State in 2023. The company's investments in the clean energy transition, and in resiliency projects that protect system reliability during more extreme weather conditions drove a 20 percent increase (\$3.8 billion) over 2021, according to an economic impact report released today.



Con Edison has provided customers with incentives for more than 8,400 electric vehicle chargers and more than 70,000 customer solar projects. Those solar arrays have the capacity to produce 622.6 megawatts of clean, renewable solar power. That's more than 5 times the energy needed to power Times Square.

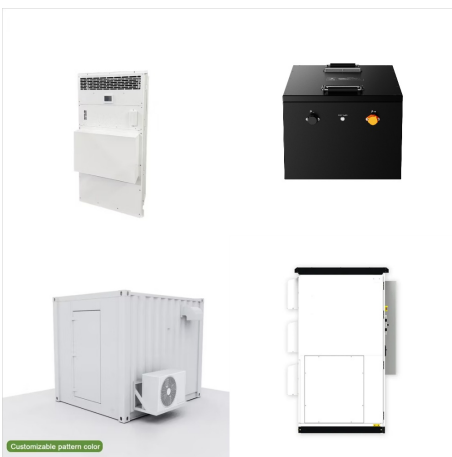


Con Edison crews are preparing to respond to any outages that occur due to the severe rain and windstorms expected to hit New York City and Westchester County. Strong winds can push trees and branches into overhead power lines and bring those lines down, causing customers to lose service and blocking roads.

31 2016 HTTPS CONED COM EN ABOUT-CON-EDISON MEDIA NEWS 20161031 SOLAR-POWER



Con Edison is a subsidiary of Consolidated Edison, Inc. [NYSE: ED], one of the nation's largest investor-owned energy companies, with approximately \$14 billion in annual revenues and \$65 billion in assets. The utility delivers electricity, natural gas and steam, and serves 3.5 million customers in New York City and Westchester County.



Each bus will have solar panels atop its roof. In addition, First Student will charge the buses at a depot on Malta Street with power from a 500-kilowatt solar array. The depot will also have a two-megawatt battery that will discharge power into the buses' batteries. (A kilowatt is 1,000 watts, while a megawatt is a million watts.)



Con Edison crews have restored 11,920 customers and are working to restore the remaining 8,180 customers in the Bronx and Westchester who lost power during the storm that hit the New York region. News & Media Center; News; Con Edison Crews Restoring Customers in Westchester County & The Bronx to lose power, primarily in Mount Vernon

31 2016 HTTPS CONED COM EN ABOUT-CON-EDISON MEDIA NEWS 20161031 SOLAR-POWER



Con Edison today marked the start of construction of its Reliable Clean City ??? Idlewild Project, which will support the electrification of John F. Kennedy International Airport, ???