

What is a 365 watt monocrystalline solar panel?

The REC 365 watt monocrystalline solar panel delivers high power output and performance for residential projects. The REC Twinpeak 4 Black module features 120 half-cut monocrystalline silicon cells on a black backsheet with a black anodized aluminum... Shop here to find low priced solar panels that generate 365 watts of DC power.

Are 365w solar panels worth it?

By building your system out of powerful modules, you get more energy from a square foot and use your space more efficiently. The 365w solar panel price is usually slightly higher than the one for more popular modules for home installations, but the power output is worth it.

Are 365 solar panels a good choice?

365 solar panels are a great choice when it comes to commercial installations of a bigger scale. By building your system out of powerful modules, you get more energy from a square foot and use your space more efficiently.

How much does a 365 watt solar panel cost?

The average price of 365 Watts solar panels on our website is between \$220 and \$540. The size of your 365 Watt solar panel depends on the manufacturer and the design of the module. If the solar panel has 60 solar cells in its construction, its dimensions will be about 65" x 40" x 1.5" and it will weight around 45 lbs.

Who makes Q-Cells 365w solar panels?

Q-CELLS USA 365W Solar Panel 72 cell Q.PEAK L-G4.2 designed by German engineers, awarded top brand PV by Euro Research. Available at affordable price at A1 Solar Store

What is a rec 365 watt monocrystalline bifacial solar panel?

The REC 365 watt monocrystalline bifacial solar panel delivers high power output and performance for residential projects. The REC N-Peak 2 all-black module features 120 half-cut bifacial silicon cells on a black backsheet with a black anodized...



Solar Panels Thermal Ranges. The thermal performance of the . U-Series 365 solar panels from SunPower ensures their reliability and efficiency across varying temperature conditions.. These panels are designed to operate optimally within a wide operating temperature range of 43°C. Additionally, the temperature coefficients of the panels, such as the Temperature a?]



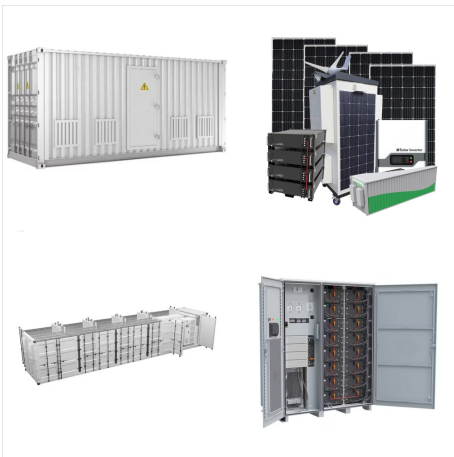
We've dedicated more than 10 years to helping homeowners realize their green power and energy independence goals. Today, our ten offices across eight states, experienced customer service team, and trusted installation partners are standing by, ready to offer you a personalized and comprehensive solar setup.



High quality solar products are reliable, backed by great warranty programs and have longer life-cycles. For the latest solar panel models, LG is now providing 25-year product warranty. This shows LG's confidence in developing highly-efficient, durable and outstanding products. Browse LG's highly-efficient and reliable Solar Panels to get



The cost of a solar panel installation varies by location, property type, and, of course, the panels used for the installation. Premium solar panel products with high efficiencies and advantageous warranties usually cost more money upfront but can offer higher potential long-term savings.



365.0 Watts: PTC Rating: TBA: Open Circuit Voltage (Voc) 47.21 Volts: Short Circuit Current (Isc) 9.77 Amps: Frame Color: Clear Anodized Aluminum: Cell Type: Monocrystalline: Origin: Hyundai HiS RI Series Solar Panel Certifications . IEC 61215 and IEC 61730 New Standard by TUV SUD . UL 1703 Listed by UL, Type 1(for Fire Class A)



365 Solar Energy, 608 Rountree Rd, Charlotte, NC (Employee: William Charles Clementi) holds a license and 1 other license according to the North Carolina license board. Their BuildZoom score of 108 ranks in the top 5% of 101,103 North Carolina licensed contractors.



With so few reviews, your opinion of 365 Solar Energy could be huge. Start your review today. Overall rating. 4 reviews. 5 stars. 4 stars. 3 stars. 2 stars. 1 star. Filter by rating. Search reviews. Search reviews. Clayton I. Garner, NC. 0. 1. 0. Jul 10, 2024. Email doesn't work for 365 support - Phone number doesn't work. This company seems to



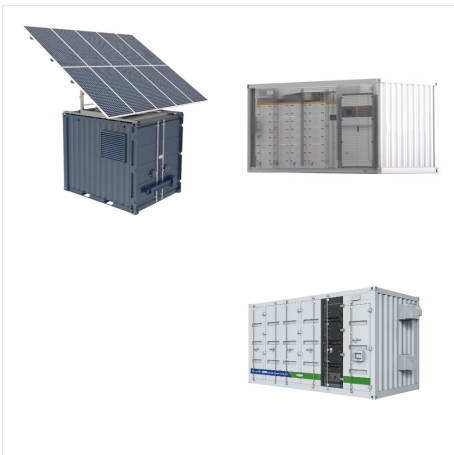
W Hyundai solar panel also comes with a generous 25-year product warranty. A panel that can handle hail, wind and snow. This module is weatherproof due to the reinforced 1.25" frame manufactured from anodized aluminum and a layer of safety tempered glass. The modules' front and rear sides can withstand loads of 5400 and 5400 Pa



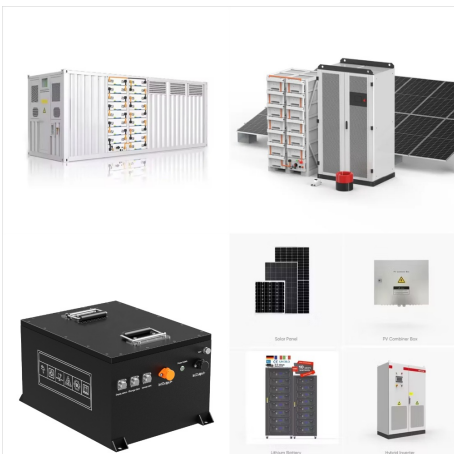
Standard solar panels: 200W, 250W, 300W, 350W, 500W panels. There are a lot of in-between power ratings like 265W, for example. To get a yearly production, let's just multiply that number by 365 days. We get 21,298 kWh/year. So that's over 20 thousand kWh every year. Reply.



This is the REC 365W Solar Panel 120 cell Alpha Series PV REC365AA; the world's most powerful 120 cell solar panel, empowering you to take full advantage of solar energy a?? A1SolarStore Rated Power Output : 365 W: Voltage (VOC) 44.3V: Number of cells: 120: Cell Type: Monocrystalline: Rated Efficiency: 20.9%: Connector Type: MC4 or MC4



The LG NeONa?c R LG365Q1C-A5 solar panel is a high-power luxury module designed to deliver long-lasting power, efficiency and reliability.. This LG 365 watt NeON R solar panel uses a state-of-the-art solar cell structure without electrodes on the front. LG maximized the utilization of light and enhanced this solar panel's reliability to new heights with their revolutionary cell design.



365 Solar Energy in Warrendale, PA | Photos | Reviews | 3 building permits for \$70,700. 1 review: "So, I opted INTO getting solar panels through 365 because I was told by Dustin Hilgar that we would have around 90-95% return on ou" License: PA165893, PA163047.



Depending on the type of panels and energy consumption, you might need anywhere from 12 to 45 solar panels. Remember, the more panels you install the more energy you will get. Please use our solar calculator to estimate your energy consumption and plan on building a solar system that will exceed your energy needs by 25%.



The sun provides more energy than we will ever need, making solar power an important energy source in clean energy production. 833-365-SOLR customerservice@365solarenergy 608 Rountree Rd. Charlotte, NC 28217



On 8/16/2021 I signed a contract to have solar panels installed by 365 Solar Energy in *****, **. The panels have barely worked since they were installed and yesterday I tried to call because the



Premium solar panels with long-term high power, that enable you to do more environmental good, and deliver on the promise of quality. Lower your energy bills and solar system costs while improving your return on investment with REC's higher efficiency and higher power solar panels.



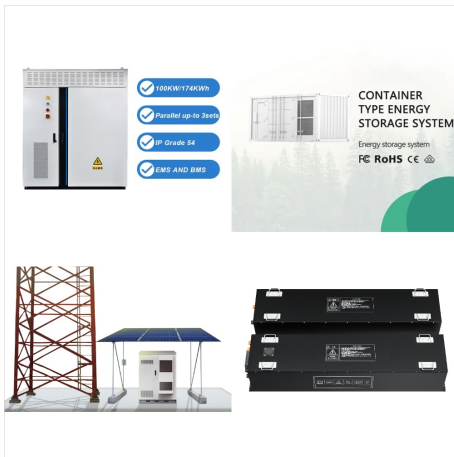
Get information on the LG 365W High Efficiency LG NeON(R) 2 Solar Panel for Home with 60 Cells (6 x 10), Module Efficiency: 20.1%, Connector Type: MC4. Find pictures, reviews, and tech specs for the LG LG365N1C-A6. To properly experience our LG website, you will need to use an alternate browser or upgrade to a newer version of internet



Specialties: 365 Solar Inc provides solar system purchase, finance and lease option and is known to have competitive pricing and excellent post-sale customer service. Established in 2016. Many employees of this organization has been in solar industry in SoCal for more than 7-8 years and our installation crews has 14 years of commercial and residential solar installation experiences.



Q-Cell 365 watt solar panel designed by German engineers, awarded top brand PV by Euro Research. This is strongest module of its type on global market with efficiency 18.8%. Q-Cell Q.PEAK L-G4.2 365W powered by 72 monocrystalline Q.ANTUM solar cells. This is a power plant module. Ideal module for ground-mounted solar power array.



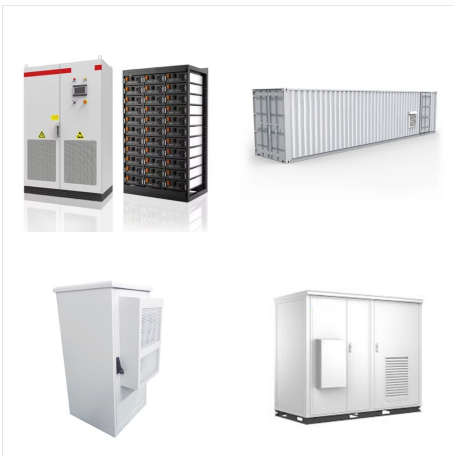
Rated Power Output : 365 W: Voltage (VOC) 41.21V: Maximum String Voltage : 1000V: Number of cells: 120: Cell Type: Monocrystalline: Rated Efficiency: 20.3%: Connector Type: MC4: Backsheet Color: black: Depending on the type of panels and energy consumption, you might need anywhere from 12 to 45 solar panels. Remember, the more panels you



Shop here to find low priced solar panels that generate 365 watts of DC power. These modules can be grid-tied or used off-grid for residential, commercial or community renewable energy generation. All our panels are UL Certified, have up to a 25 year manufacturers warranty and qualify for tax credits and rebates.



The best performance per penny: REC Group solar panels offer the best value on the market. Powerful specs: REC Group has the best temperature coefficient and is one of the most efficient solar panels on EnergySage. #1 rated solar panel on EnergySage: REC Group's Alpha Pure 410-watt solar panel received a 100/100 score on EnergySage. Cons



North Carolina currently has over 5,600 Megawatts of solar panels installed. This has largely been made possible by incentives such as the Federal tax credit which covers 26 percent of the total cost of a solar array for 2020 and 22% for 2021*.. Over 12,000 installations have been completed in the state which has led to over 6,700 jobs being added to the state's economy.



365 Solar Energy, LLC | HomeAdvisor prescreened in Charlotte, NC. I had 365 put in my 6.4kwh system in Sept 2021. From the first sales appointment onward, the entire project was a dream (minus the incompetence of the local code enforcement officer lol).