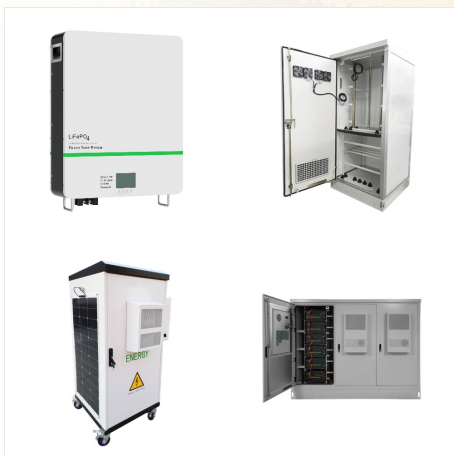




See chart below for requirements for each system.  
Or purchase one of our USB power supplies to  
compliment the cable! Our USB AC adapter is 5V  
and 2 amp is easily able to handle the Atari systems  
and many expansions needing extra power. atari  
130xe usb power supply atari 65 xe usb power  
supply. Show Less. shop. Atari 1050 power cable



The XEGS is very similar but used 4 bit wide  
Memory chips, 2x 4x64k rather than 8x 1x64k the  
additional chips only have one leg wired differently  
to the originals.(some later 65/130XE's used either  
2 or 4 chips as well) On the 130XE Freddie works  
with the eMMU and allows refresh cycles to keep  
the additional memory working.



I bought this power supply because I read that the  
original Atari supplies can damage the computer if  
they fail. I wanted the higher output supply just in  
case I used a periferal that required power from the  
serial bus. Atari XL/XE 5-Pin DIN to Commodore  
Chroma / Luma AV Cable (1701, 1702, 1802) \$ 9.99  
??? \$ 11.99 Select Option; Affiliate

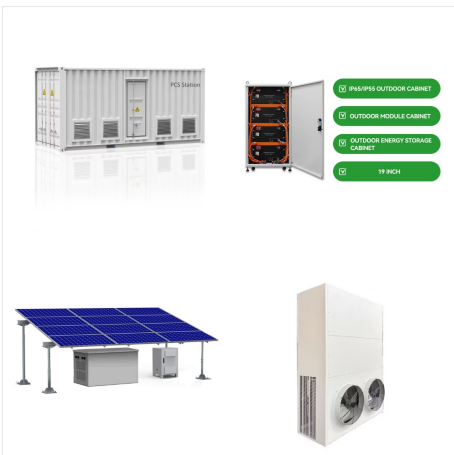
# 4-PIN POWER SUPPLY ATARI XE GAME SYSTEM



There has been a couple of reports of instability when using the Keelog PSU, this seems to be due to the AC rail being too high. An original 240v rated PSU outputs around 10v AC (24:1) while the Keelog is outputting around 12 (20:1).



High-quality Atari XL/XE replacement power supply unit (PSU). Designed specifically for Atari XL/XE systems to preserve them in a pristine condition for years to come. Stabilized +5V/2.0A DC ensure continued error-free operation of your Atari XL/XE. Replacement power supply for Atari XL/XE; Stabilized +5V/2.0A DC output



Atari Power Supply (PSU) Overview. Overview of Atari-oriented power supplies. Tags: #8-bit; #atari; #power supply; #psu; Posted By Timothy Kline Jun 22, 2020. Attached guide to XL/XE PSUs: clockwise from top-right: C061982 "Box" 1.5A - usually very safe C70042-01 "Logo" 1A - very reliable

# 4-PIN POWER SUPPLY ATARI XE GAME SYSTEM



Needing a new power supply / AC adapter for your Atari 600XL, 800XL, 65XE, 130XE, or XEGS? This AC adapter uses modern technology to power your Atari. This adapter provides 5 Volts an 2.4 Amps that will work with any of the listed Atari computers listed below. Cable length is about 5 feet. See chart below for requirements for each system.



Pins 3, 5, and 7 are ground. Strip and splice the two appropriate wires to + and - wires of a modern 5vdc switching power supply and you have a much safer power source for 600/800XL/65/130XE. A cell phone charger or USB power supply is a good choice, anything 5volts DC at 2amps or higher will supply the Atari's requirements.



Just got my hands on an Atari XE game system. Which really helps because I've been sitting on a stack of 8bit carts I cant play. Wanted Atari Power Supply. IGNORED Wanted Atari Power Supply. By Zeptari September 2, 2014 in New England Classic Gaming (NECG) Share More sharing options Followers 0. Reply to this topic; Start new topic

# 4-PIN POWER SUPPLY ATARI XE GAME SYSTEM



Power supply for Atari 65XE, 130XE, 600XL, 800XL, 800XE and XEGS. Design to replace the original AC adapter. 2m/6ft cable. Don't deteriorate video or audio. Regulated voltage. EU plug. Overload and Short-Circuit Protection. CE certified and FCC regulated. 1 year warranty. Don't need to use a step-down transformer.



Several USB-C power adaptors are now widely available. Instructions. You can purchase a USB-C power adaptor from Mozzwald for \$11 or on eBay for \$11.25. There might be other sellers as well. I purchased the ones shown below from Mozzwald. Atari XL and XE USB-C power adaptor. Comments. This seems like a nice option if you regularly power devices



How much are 7800 games worth? What power supply does the 7800 use and where can I get one? Will Atari 2600 games work on the 7800? The short answer is yes. Most Atari 2600 games will work fine on a 7800. However, Atari's light gun (model number XG-1) that came with the XE-Game-System works well. Additionally, Best Electronics sells



# 4-PIN POWER SUPPLY ATARI XE GAME SYSTEM



It's a Dynex from Best Buy, perhaps dependability might be an issue, it might make an Ingot seem safe. I haven't checked the voltage, how picky is an Atari? (130 XE) It would be nice to reduce cord clutter. My system has 4 power cords, monitor cable, two SIO cables, SCSI, and Centronics cables, and that's just the Atari!



While true, seems unnecessary They could of just as easily used a two pin connector. May have been an Industry or Atari "standard" back then to use DIN for DC connectors as I have seen other vintage gear with 2 pin DIN connectors. Today the coaxial power connector is common due to size mainly. Yogi



The Atari XE Video Game System (Atari XEGS) sometimes pronounced zegs, is a video game console released by Atari Corporation in 1987. Based on the Atari 65XE computer, the XEGS is compatible with the existing Atari 8-bit computer software library.

# 4-PIN POWER SUPPLY ATARI XE GAME SYSTEM



The Atari XE Game System (XEGS) was packaged in two varieties. Both included the CX-40 joystick, but the deluxe model also included the keyboard, light gun and two additional games (Flight Simulator II and Bug Hunt). Power Supply - External: Other Outputs: Other Details Notes: Input: 120V, 60 Hz Output: DC 5V, 17W, 1A: None: The game



According to section 6.7 in the Atari 8-bit FAQ, the XE game system was shipped with power supply CO70042, which outputs 5V DC 1A, max 17W. There exists two versions of this one, the Mini and the Logo of which the Logo is recommended. Of course any beefier 5V DC power supply will work as well.



It is indeed nice to power the Atari from a modern compact, cool power supply. The danger of using a 5-pin DIN is the possibility of accidentally plugging it into the monitor jack. 7-pin DIN's are readily found on ebay. You can add a crowbar circuit to any XL/XE power supply as long as you can get inside. I based my build on the following

# 4-PIN POWER SUPPLY ATARI XE GAME SYSTEM



The original 9VAC power bricks for the 400/800/1050/1200XL are dead simple transformers - there's not much inside to go wrong, and when they fail, it's either because the fuse inside blew (probably because it was subject to a power surge from house wiring), or because the thing was physically abused and something broke the transformer coil windings.



I'm making one last ditch effort to fix my Atari XE game system (which was sold to me as fully working!). The system (after cleaning, etc.) does work (it definitely wasn't tested as most of the games would not fire up until I thoroughly cleaned everything). Original game cartridges fire up and joysticks work fine.



Main Power Connector Type: 2 Pin: Manufacturer: Keelog: See more. About this item . Goupchn Atari 2600 TV Adapter F Type Male to RCA Female Coax Coaxial Connector Converter 2PCS for Atari 2600/7800, Sega, Commodore Game System. Replacement Atari XL/XE Power Supply, US Plug. Share:

# 4-PIN POWER SUPPLY ATARI XE GAME SYSTEM



Hello everyone. I have an Atari XE system that I want to test before I sell it but I cannot seem to find out its power requirements. It looks like the same pin out and plug as the Atari 800.? I believe the old Atari 520St power supplies were the types of pin configurations that I ???



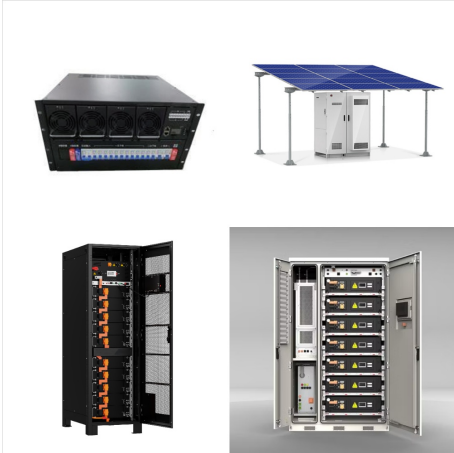
L"Atari XE Video Game System (o Atari XEGS) ye una consola de videoxuegos llanzada por Atari Corporation en 1987. Basada nel microordenador Atari 65XE, la XEGS ye compatible cola biblioteca de software de les m?quines de la familia Atari de 8 bits.Adicionalmente, esta consola ye capaz d"operar tami?n como ordenador completa, a?ader diversos perif?ricos, como un ???



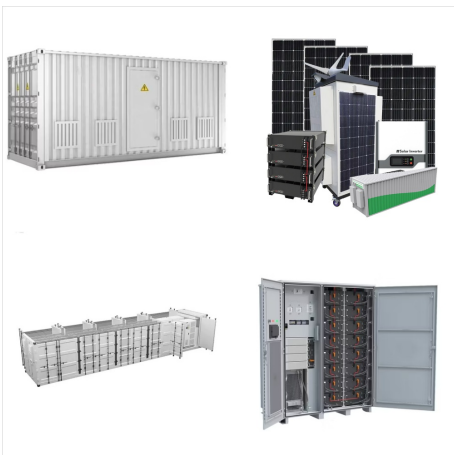
View the Atari XE System manual for free or ask your question to other Atari XE System owners. for its time. Additionally, it supports high-resolution graphics, which enhances the visual experience of games. The system also includes a reliable power supply unit, ensuring stable performance during gameplay. 4. Power cycle the system: If



# 4-PIN POWER SUPPLY ATARI XE GAME SYSTEM



Atari Xe System With Power Supply AV Cables  
Game And Joystick TESTED [eBay] \$219.99:  
Report It: 2024-07-02: Time Warp shows photos of  
completed sales. Chart shows the price of Atari XE  
System at the end of each month going back as  
long as we have tracked the item. Categories; Video  
Game Prices; Coin Prices;

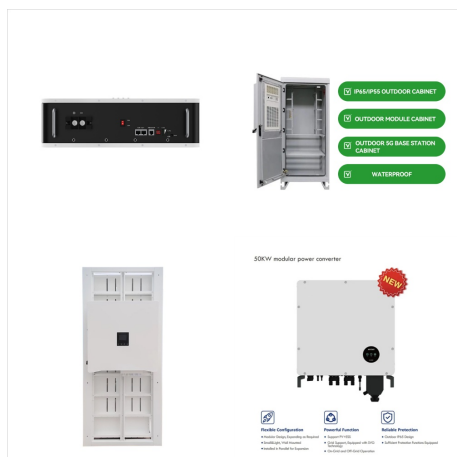


Used Vintage OEM Original Atari 7800 Power  
Supply. Tested and working. Seller does not offer  
returns 4 Bids. Current 3 day E-Bay auction as of  
09-29-19. Current bid \$29.00 plus \$14.20 shipping  
All Atari Clone and over priced Atari OEM 7800  
Power Supplies listed on E-Bay, all suffer from the  
same problems that cause the always fail early for  
the last 25+ years.



Needing a new power supply / AC adapter for your  
Atari 600XL, 800XL, 65XE, 130XE, or XEGS and  
have a extra USB AC adapter that accepts USB-A  
type connector (see pictures). Atari XL/XE USB  
Power Supply Cable. TRS-80 Color Computer  
4-Pin DIN to 9-Pin Dsub Serial Cable \$ 17.99 ??? \$  
19.99 Select Option; Atari XL/XE 2.4A Amp Power  
Adapter

# 4-PIN POWER SUPPLY ATARI XE GAME SYSTEM



This series of power supplies gives your system a fresh start, minimizing the risk of damage due to an ageing factory power supply. The Atari XL/XE power supply has a chassis design called Modern (as opposed to our C64 Classic series), and resembles a modern power supply with a slick shape of 125 mm x 59 mm x 42 mm (5.0" x 2.3" x 1.6"). The



-Yes, it does have the same connector as the 800XL (I'm guessing all the XL/XE systems can use each others" power supply). -No, the XEGS does not have more memory than the 800XL. It still has 64K of memory.



Hi Guys, I need a power supply for a 65 XE I just purchased (on its way). So Im going to just make one. This is likely why Atari chose to use a 7-pin for the power supply, to prevent people from accidentally frying their machines. Good to know 5 pin would fit but ya that would be a good way to blow it up.