

How big is a 40kW solar power system?

A 40kW solar power system using 370W panels requires approximately 189.5 square meters of roof space for installation. Each 370W panel measures about 1.75m x 1m. 40kW solar power systems are mostly suitable for larger businesses with high energy needs.

How much does a 40kW Solar System cost?

Buy the lowest cost 40kW solar kit priced from \$1.15 to \$1.90 per watt with the latest, most powerful solar panels, module optimizers, or micro-inverters.

What is a 40kW grid-connect solar system?

These 40kW size grid-connect solar kits include solar panels, string inverter, and the racking system for a ground mount. These are complete PV power systems that can work for a home or business, with everything you need to get the system up and running. The kits include hardware components only; does NOT include labor.

Is a 40kW Solar System necessary for me?

If you are a Commercial/Industrial customer and you use between 160.1kWhs and 241.5kWhs, then a 40kW solar system could be a good choice to help reduce power bill costs. Whether or not you need a 40kW Solar System will depend on many things. Solar Proof Quotes offer a quick and easy way to get 40kW solar system quotes.

How can I get a quote for a 40kW Solar System?

To get a quote for a 40kW Solar System, fill out Solar Proof Quotes' quick and easy form. You will receive quotes from installers in your region who are experienced in 40kW solar power installations. 40kW Solar System Information - Facts & Figures.

Which solar panels are best for a 40 kWh solar system?

Look for brands like Jinko Solar, JA, Trina, Longi Solar to construct your 40 kWh solar system. American-made panels from brands like Mission Solar, Silfab, Aptos Solar are slightly more expensive, but the warranties for them are often better.



The SolarEdge SE40K-US is a 40.0 kW (40,000 watt) grid-tied three phase inverter for the 277/480V grid. This solar inverter was designed to work specifically with power optimizers and has an integrated data monitoring receiver that aggregates the

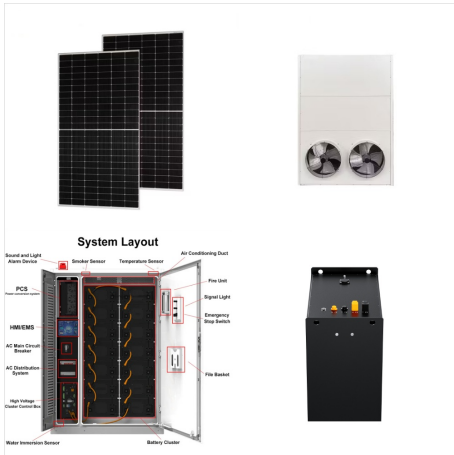


Step 3: Determine what solar panel system size you need. Now that you know your electricity usage and sun exposure, you can calculate the size of the solar system you need in kilowatts (kW). Simply divide your household electricity consumption by the monthly peak sun hours to find the right system size for your home.



Solar panels, DC-to-AC inverter, rack mounting system, hardware, cabling, permit plans, and instructions are included in these 40 kW grid-connected solar kits. These are comprehensive PV solar power systems that can be used for either a home or a business, and include almost everything you'll need to get the system up and operating quickly.

40 KW SOLAR SYSTEM



As of January 2022, the average cost of solar in the U.S. is \$2.77 per watt - that comes out to about \$55,400 for a 20 kW system. That means the total cost for a 20 kW solar system would be \$40,996 after the federal solar tax credit discount (not factoring in any additional state rebates or incentives).



Low wholesale price on this home 14.4kw LG NeON R solar panel system w/ SolarEdge inverter and choice of mount. Authorized LG Solar supplier. System Power: 14.40 KW: Watts per Sq./Ft. 19.52: Panel PTC Rating: 337.6: Panel Frame Color: Black: Panel Dimensions: 66.38" x 40.0" x 1.57" Solar Array Area: 738 sq. ft.



Compare price and performance of the Top Brands to find the best 20 kW solar system with up to 30 year warranty. Buy the lowest cost 20kW solar kit priced from \$1.12 to \$2.10 per watt with the latest, most powerful solar panels, module optimizers, or micro-inverters. For home or business, save 30% with a solar tax credit.



Here are some common panel sizes which could make up a 40kW system: 330W (121 x solar panels to make 39.93kW) 350W (114 x solar panels to make 39.90kW) 370W (108 x solar panels to make 39.96kW) 390W (103 x solar panels to make 40.17kW) 400W (100 x solar panels to make 40.00kW) 420W (95 x solar panels to make 39.90kW)



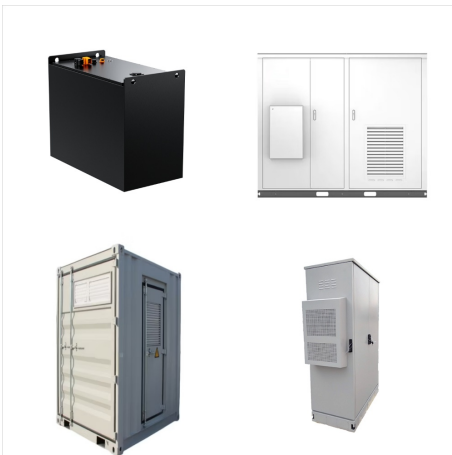
If it needs lets say 10 kWh/day; you will need a solar system that produces that. Here is the equation you can use: $\text{Solar System Size} = \frac{\text{kWh/day Needed}}{(\text{Peak Sun Hours} * 0.75)}$. Quick Example: Let's say you need 10 kWh/day and live in location with 5 peak sun hours. Here's the calculations: $10 \text{ kWh/day} / (5 * 0.75) = 2.667 \text{ kW system}$.



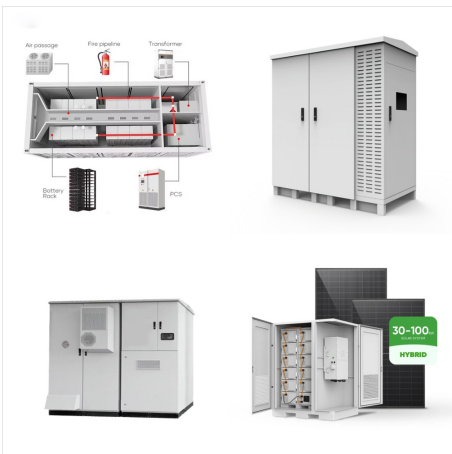
In California, a 10kW solar system can generate approximately 40 kWh of electricity daily because of the sunny weather. We calculate this figure based on the average peak sun hours in the region. The average 10 kW solar system has a payback period of 7 to 9 years. This means that homeowners can make back the money they spent on the solar



Shop Jackery SolarSaga 40W Mini Solar Panel
11.8-in x 9.9-in x 1.18-in 40-Watt Portable Solar
Panel in the Portable Solar Panels department at
Lowe's . Jackery was founded in Silicon Valley in
2012. With state-of-the-art research and
development and manufacturing expertise, Jackery
launched the first Lithium



To figure out how many kilowatt-hours (kWh) your
solar panel system puts out per year, you need to
multiply the size of your system in kW DC times the
.8 derate factor times the number of hours of sun.
So if you have a 7.5 kW DC system working an
average of 5 hours per day, 365 days a year, it'll
result in 10,950 kWh in a year.



A 40 kw solar system for the right home or business
should save around \$218200 over the course of its
expected 25 year lifetime. That's based on grid
electric costing \$0.34/ kWh. That's roughly \$8730
per year in savings, without taking into account
inflation or rising electric prices (which both add to
your savings if you invest in solar



40 kW Solar System Price In India With Subsidies. In recent years, the price of solar systems has decreased exponentially. Based on the solar brand, your location, and the type of solar system the pricing of the solar systems depends. The price of the solar varies from Rs. 44 per watt on the on-grid solar system to Rs. 78 per watt for the



Upgrade to the 14.40 KW REC400AA Roof Mounted Solar System from Solar Electric Supply. 36-panel setup for large properties. Get a custom quote today! 14.4 KW Roof-Mounted Solar Systems Include. 36 REC Alpha Pure REC400AA 400 watt solar panels; SolarEdge SE11400H-US Inverter w/ SetApp;



Installation and Components of 40kW Solar Systems. To thoroughly grasp 40kW solar systems, it is necessary to investigate their installation process and the important components involved. Let us now get down to business: 1. Site Assessment and Design. A professional solar installer will conduct a full site review before installation to determine the viability of your location for a ???



Compare price and performance of the Top Brands to find the best 10 kW solar system with up to 30 year warranty. Buy the lowest cost 10kW solar kit priced from \$1.15 to \$2.10 per watt with the latest, most powerful solar panels, module optimizers, or micro-inverters. For home or business, save 26% with a solar tax credit.. Click on a solar kit below to review parts list and options for ???



Solar Panel Size. It focuses on maximum electricity generation and overall capacity rather than the quantity of panels. To calculate the required system size, multiply the number of panels by the output. For example, a 6.6 kW solar system typically consists of 20 panels each delivering 330W of power. Solar Panel Wattage



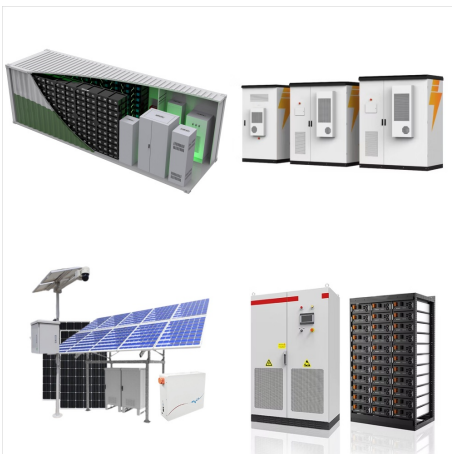
10 kilowatt (kW) solar systems becoming an increasingly popular solar solution for homes because of increased energy usage and lower solar costs. On average, a 10 kW solar system will cost \$30,000 before the federal solar tax credit. 10 kW of solar panels can generate enough electricity to cover a \$160 electricity bill. Depending on where you



Now, when sizing a grid-tied solar battery system for daily usage, you will want a system that can deliver up to 30 kWh, or possibly more for peak usage days. However, if you also want the system to provide off-grid backup battery storage, then you will typically choose 3X to 5X the daily average, or 90 to 150 kWh.



The SolarEdge SE40K-US is a 40.0 kW (40,000 watt) grid-tied three phase inverter for the 277/480V grid. This solar inverter was designed to work specifically with power optimizers and has an integrated data monitoring receiver that aggregates the optimizers performance data from each PV module.



For example, the average daily usage was ~18 kWh in Hawaii and 40 kWh in Louisiana, which is quite a spread. But we'll use the national average 30 kWh per day as the figure for our example. Yes, in many cases a 10 kW ???



Now you can just read the solar panel daily kWh production off this chart. Here are some examples of individual solar panels: A 300-watt solar panel will produce anywhere from 0.90 to 1.35 kWh per day (at 4-6 peak sun hours locations).; A 400-watt solar panel will produce anywhere from 1.20 to 1.80 kWh per day (at 4-6 peak sun hours locations).; The biggest 700 ???



A 40 kW solar system is a commercial-grade solar system that is designed for small to medium-sized businesses with high electricity needs. It typically consists of between 100-160 solar panels, and can generate between 50,000-60,000 kWh of electricity per year, depending on factors such as location, weather conditions, and panel orientation.



KW REC410AA Pure-R Residential Ground Mount System is designed for larger residential properties or Estates. Featuring 40 top-quality 410W Pure-R panels, this system offers impressive power output to meet the demands of even the most energy-intensive homes.

40 KW SOLAR SYSTEM



A 40 kilowatt solar system, robust and powerful, is designed to meet the energy needs of larger homes or small businesses. It's a significant step towards energy independence, slashing utility bills and reducing carbon footprints.



We analyzed solar quotes from the EnergySage Solar Marketplace to understand the range of prices that solar shoppers are paying for 12 kW solar energy systems across the United States. Homeowners who use EnergySage shop for the right home solar panel system at the right price by comparing multiple offers from solar installers in their area.



Solar System Size. 40 KW: Solar Panels. Sanyo HIT-N220A01 220 watt Monocrystalline: Panel Frame Color: Black: Inverter: SMA Sunny Tower ST42: Mounting System: Prosolar SolarWedge: Panel Dimensions: 62.2" x 31.4" x 1.4"

40 KW SOLAR SYSTEM



Low wholesale priced 14kW PowerXT roof-mount solar system w/ SolarEdge optimizers and choice of mount. Advice from an authorized Solaria supplier. System Power: 14.00 KW: Watts per Sq./Ft. 17.97: Panel PTC Rating: 318.2: Panel Frame Color: Black: 40 Solaria 350 watt PowerXT solar panels. SolarEdge SE11400A-US Grid-Tie Inverter. 40