



Why is my Ryobi 40V battery not charging?

Test the charger with a different Ryobi 40V battery to see if it charges successfully. This will help determine if the problem is with the battery itself. If the battery is still not charging, it may be defective and require replacement. Contact Ryobi customer support or the retailer for further assistance.

Why is my 40V battery not working?

If you go to use your 40v battery and notice that it isn't working, there are likely a few common reasons. It could be that the battery has switched to "sleep mode" and just needs to be reset. It could also be that the battery has been exposed to extreme heat or cold. Finally, it could be that the battery terminals have become dirty or corroded.

How long does a 40 volt lithium ion battery last?

The 40 volt lithium ion battery of your Ryobi tool has a set lifespan. The typical lifespan of a Ryobi battery or any 40 volt lithium ion battery for that matter is two to three years or around 300 to 500 charge cycles. A charge cycle is a period of use from fully charged to discharge then fully charged again.

Why does my Ryobi 40V battery go to sleep?

When the power tool has not been used for quite some time the battery has the tendency to go to sleep mode. This usually happens if the lithium ion battery has been discharged to a certain low level. When you charge the Ryobi 40v system battery you might just see the red and green lights flashing on the charger.

How do I know if my Ryobi 40V battery is bad?

To confirm both or any of the issues, take your battery to a Ryobi store or a local auto shop selling Ryobi 40V batteries to try one of their chargers. If the other charger works just fine, you likely have a bad charger and need to replace it.

Why is my lithium battery not charging?

Sometimes, faulty or damaged charging cables or ports can prevent a lithium battery from charging. Check the cable and port for any signs of damage or wear. If you notice any issues, replace the cable or repair the port to establish a proper connection between the charger and battery. 4. Battery protection mechanisms engaged

# 40 VOLT LITHIUM BATTERY WON T CHARGE



If the charger detects a weak or damaged battery, the charging indicator (24) will flash red at a fast rate. Follow these steps: Re-insert the battery (22). If the charging indicators continues flashing red at a fast rate, use a different battery to determine if the ???

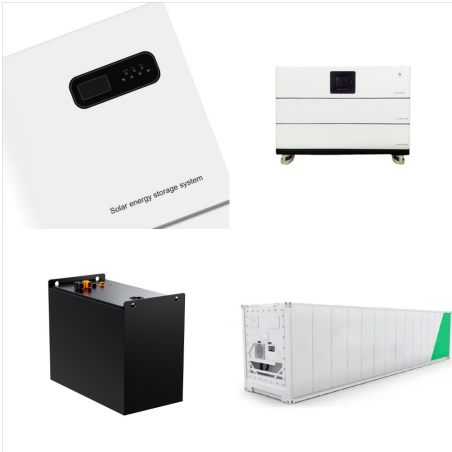


Solution: Charge the bare lithium battery directly using the charger with over-voltage protection, but do not use universal charge. It could be quite dangerous. Root cause 2: Uneven current. Due to contact resistance or detection of charge, the current is inconsistent caused by the uneven charge of the cell. In the short-term storage (12 hours

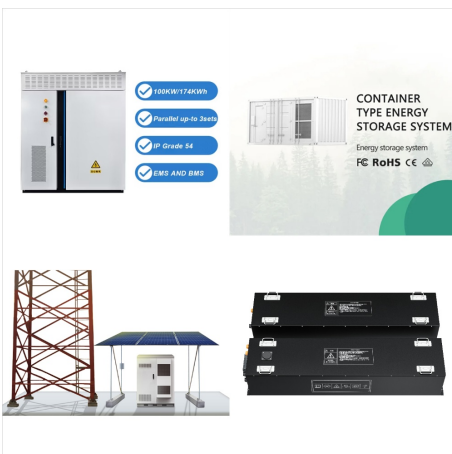


How Do You Fix a Lithium Ion Battery That Won't Charge? To address a lithium-ion battery that won't charge, start by checking connections, ensuring the charger is plugged in correctly, and trying a different charger. Inspect for physical damage and contact the manufacturer for further assistance or warranty coverage.

# 40 VOLT LITHIUM BATTERY WON'T CHARGE



One of the most common reasons for a lithium battery not charging is insufficient voltage from the charger itself. Chargers provide the necessary voltage to recharge the battery. If the voltage output is too low, the battery won't charge ???



Use Compatible Charger: Make sure to use a compatible charger specifically designed for Kobalt 40V batteries. Align The Terminals: Ensure that the terminals on the battery and charger are correctly aligned before connecting them. Connect The Charger: Plug the charger into a power source and then connect it to the battery.

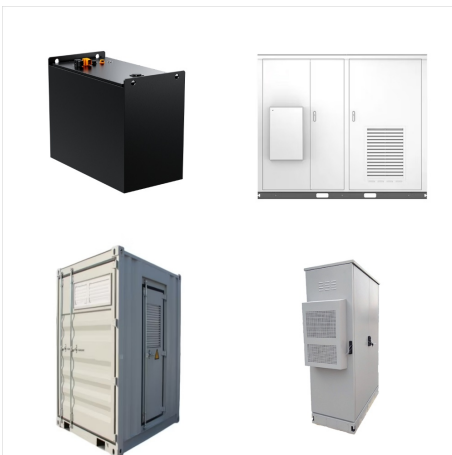


It's also worth noting that lithium-ion batteries, such as those used in Greenworks tools, tend to have shorter run times in colder temperatures. Use a battery charger or check the charge level using a battery indicator if available. If the charge level is low, connect the battery to the charger and allow it to charge fully before trying

# 40 VOLT LITHIUM BATTERY WON T CHARGE



I have a Ryobi 40v li-ion battery that will no longer charge on the Ryobi charger. The battery registers only 1 volt on the voltmeter. Lithium ion battery packs contain protection circuitry to prevent overcharge and over-discharge, both of which permanently damage Li-ion batteries and cause a serious risk of fire if they are later recharged



Shop Kobalt 40v 40-Volt 160 Ah Lithium Ion (li-ion) Battery in the Cordless Power Equipment Batteries & Chargers department at Lowe's . The Kobalt 40-Volt Max 4.0-Ah Quick Charge battery provides more power and runtime, so you can get the job done fast. The LED charge indicator keeps you



Fixing a lithium-ion battery that won't charge. There are various methods to fix a lithium-ion battery that does not charge. They include; Method 1; do a full recharge of your battery. If your battery can no longer hold a charge and is draining at an alarming rate, you may be able to salvage it by performing a complete recharge.



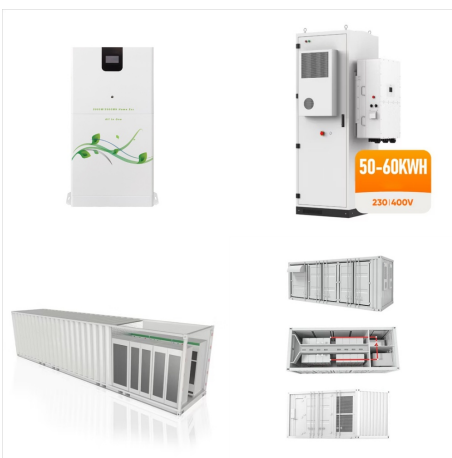
# 40 VOLT LITHIUM BATTERY WON T CHARGE



There are several reasons why the Kobalt 40V battery that you have is not charging. Though, starting with the most common one, you should note that the battery might be overheating.. This mainly happens due to the long usage of these power tools which is why giving them some rest is crucial.. The only thing that you have to do is power off your tool while it is ???



I have a Ryobi 40v li-ion battery that will no longer charge on the Ryobi charger. The battery registers only 1 volt on the voltmeter. I've tried to hotwire the battery from a fully charged known good battery of the same make and voltage but it will not rise above 1 volt on ???



Additionally, regularly checking the terminals for any damage or debris buildup can also help maintain the battery's charging efficiency. Check The Charger With A Multimeter First. If your Kobalt 40V battery still won't charge after following the steps mentioned above, it may be worth checking the charger's functionality with a multimeter.

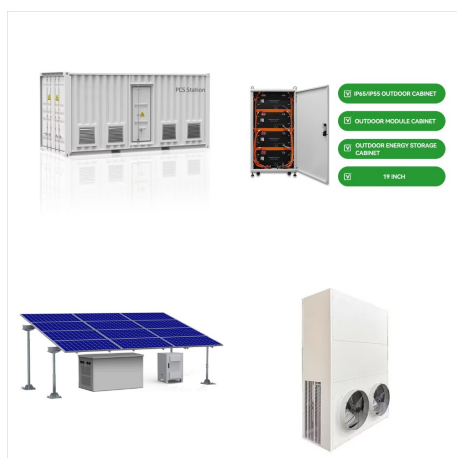
# 40 VOLT LITHIUM BATTERY WON'T CHARGE



? The Kobalt 40V battery is a lithium-ion battery, which means it has a high energy density and can store a lot of power in a small size. As a Kobalt 40V battery owner, I understand the frustration of having a battery that won't ???



Battery charging temperature range. Lithium-ion batteries in particular need to be in a certain temperature range to charge effectively. That range for lithium-ion batteries is between 41 degrees and 113 degrees Fahrenheit. This involves giving the battery a series of small charges since it won't take to charging when it enters sleep mode.



Kobalt Battery Not Charging (24, 40 & 80V) ???  
Quick Fixes! May 26, 2024. 3 Comments. By Robert Johnson. You can't force a Lithium-ion battery to charge due to its perfectly managed mechanism that is managed by ???

# 40 VOLT LITHIUM BATTERY WON T CHARGE



Then test the battery again. The voltage should rise every time. And you should be good to go when it's above 7 volts. #6 Take It to a Store. If all else fails, the quickest answer can be found at your nearest Ryobi distributor. I recommend you take your battery and charger, then test both. Try charging the battery on another charger. It works?

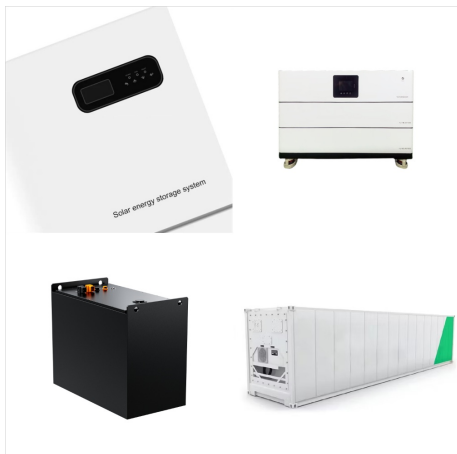


Fixing a lithium-ion battery that won't charge. There are various methods to fix a lithium-ion battery that does not charge. They include; Method 1; do a full recharge of your battery. If your battery can no longer hold a charge and is ???



How to fix the LiFePO4 battery that doesn't charge? Your battery is expected to not charge after being stored for a couple of months. You can follow this road map to receiving your battery. Use a low volt charger. You have stored your battery for some time, and now it is not picking up the electric current. In this case, you can use a low-volt

# 40 VOLT LITHIUM BATTERY WON T CHARGE



What steps can I take to troubleshoot a Skil Power CORE 40 battery that won't charge? First, check that the charger is plugged in and the outlet is operational. Then inspect the battery contacts for cleanliness and secure connection. Also, ensure the battery is at a proper temperature for charging. Is there a way to reset a Skil Power CORE 40



Powilling 40V 3.5Ah Replacement Lithium Battery for GreenWorks 29462 Battery GreenWorks 40V G-MAX Power Tools 29252 20202 22262. If your Greenworks 60V battery charger is not working, try using a different outlet to see if the problem is with the outlet. If the charger still doesn't work, try using a different battery in the charger to



15-MINUTE CHARGING - Auto PWR JUMP??? charges the battery from 0 to 30% in just 15 minutes (based on a 2.5Ah battery). LED STATUS LIGHTS - Show charge status of the battery, so you know how much time is available. PWR ???



# 40 VOLT LITHIUM BATTERY WON T CHARGE



Charging HART??? 40 Volt Lithium-ion batteries;  
NOTICE: Charge in a well-ventilated area. Do not block charger vents. Keep them clear to allow proper ventilation. CHARGING See Figures 1 ??? 2, page 7. Battery packs are shipped in a low charge condition. Therefore, you should charge them before first use.



KUNLUN 6.0Ah 40 Volt Lithium Battery for Ryobi  
40V Battery, High Capacity 40-Volt Lithium Battery  
Compatible for Ryobi 40V OP4026 OP4030  
OP4040 OP40501 OP40602 Battery If your Ryobi  
lithium-ion battery won't charge, there are a few  
things you can try to repair it. First, make sure the  
battery isn't too hot or too cold. If it is, let it



When the battery pack does not charge and the  
charger blinks red and green, resetting the battery  
may solve t problem. What you need. Step 1 How to  
reset Ryoby OP40401 40V 4AH Battery Pack . To  
open the battery pack you need to remove the 4  
screws on the bottom of the unit. Edit

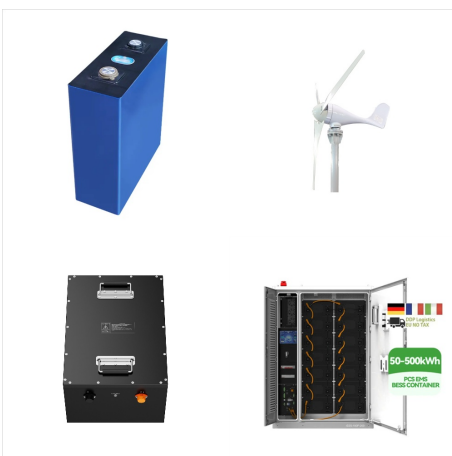
# 40 VOLT LITHIUM BATTERY WON T CHARGE



Black and Decker batteries come in variations of 20-volt, 40-volt, and 60-volt, with their most common being the 20V MAX Lithium Battery 3.0 Amp Hour. it won't be able to charge the battery adequately. Usually, if your power source is firing on all cylinders and your battery is in good working order- the charger is the thing to blame.



? The Kobalt 40V battery is a lithium-ion battery, which means it has a high energy density and can store a lot of power in a small size. As a Kobalt 40V battery owner, I understand the frustration of having a battery that won't charge. In this section, I will discuss some of the most common issues that can cause a Kobalt battery not to



#1 Inspect the Power Cord. The first thing to remember is that "cordless" doesn't mean that everything involved is completely operating without a cord. When it comes to your Ryobi primary battery pack charger, the cord is inescapable. If you plug in your charger, even without a battery pack already on it, you should at least have a solid RED LED light up, ???

# 40 VOLT LITHIUM BATTERY WON T CHARGE



had this same problem. replaced battery (wouldn't take a charge) . have charged the new one ok, but 2nd time charging went to flashing red light, took it out of charger, put it back in. I watched it carefully & it charged normally.