

What does kernel-power 41 mean?

However, the Kernel-Power 41 issue doesn't always indicate a power supply issue but can also indicate an issue with your system hardware, causing a power fault and, in turn, your system to crash. The Kernel-Power critical error is typically associated with Event ID 41.

What is Windows 10 error ID 41 'kernel-power'?

The Windows 10 error Event ID 41 'Kernel-Power' is about power and isn't a Windows issue at all you'll be pleased to know. What you may not be so pleased to hear is that it is usually a sign of a faulty PSU or power input. If you need to fix Windows 10 error Event ID 41 'Kernel-Power', here's what you can do.

What is kernel power event ID 41?

When a Windows-based computer starts, a check is performed to determine whether the computer was shut down cleanly. If not, a Kernel Power event ID 41 message is generated. An event ID 41 is used to report that something unexpected happened that prevented Windows from shutting down correctly.

What is kernel power error 41?

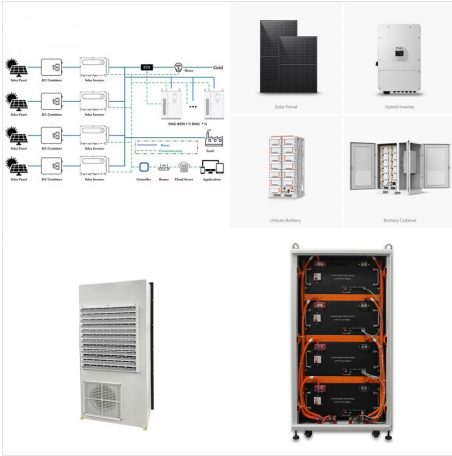
Kernel Power Error 41 is a Windows event triggered by unexpected system shutdowns or restarts. Some of the reasons are usually inadequate power supply for increased hardware demands, overheating issues, and faulty or outdated drivers. Moreover, problematic power settings can also lead to this error.

How do I fix event 41 kernel power?

Sometimes, the event 41 kernel power fix is as simple as deleting/reinstalling your security software. If the problem persists, you might want to consider switching to a different antivirus software that offers efficient protection. You can confidently choose from the best antivirus software today and secure your PC.

What is kernel power 41 error 0x8000400000000002?

We all experience computer errors from time to time, and some Windows 10 users have reported the Kernel Power 41 error on their devices. You might also get the 0x8000400000000002 error code with it, and face random restart issues. The error comes with the following message: The system has rebooted without cleanly shutting down first.



Kernel Power 41 or Event ID: 41 happens when your PC shuts down unexpectedly. This scenario usually indicates a problem with the hardware, but it is not limited to that. To troubleshoot your issue with unexpected shut downs, kindly check these things: Disable overclocking to see whether the issue occurs when the system is run at the correct speed.



PSU has a watt display and system typically draws between 550W and 800W in average). Logs: - System - Provider [Name] Microsoft-Windows-Kernel-Power [Guid] {331c3b3a-2005-44c2-ac5e-77220c37d6b4} EventID 41 Version 9 Level 1 Task 63 Opcode 0 Keywords 0x80004000000000002 ???



This was an annoying issue, but disabling C-state for my AMD cpu in bios fixed it. Seems like when cpu was idling and then needed power back again (often in games or just quitting out of the game after couple of minutes) this caused my pc to freeze and auto restart.



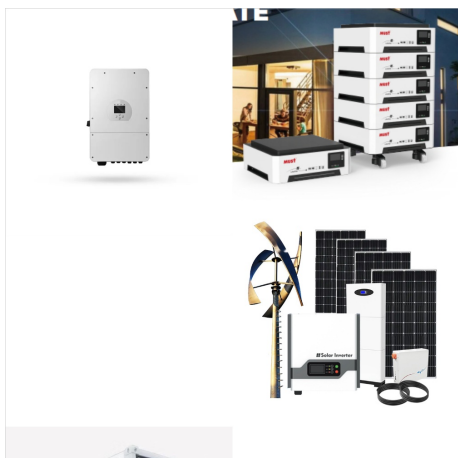
Hello, I'm facing an Critical Kernel Power 41 event on windows server 2019, I have checked the power of the system it seems good. Note that this server is internal, meaning that there is no internet connectivity, is there any possibility that windows???



Hi everyone. Firstly I apologise if I've posted this in the wrong area. I'm experiencing a power issue and a friend of mine suggested that it might be an issue with my power supply. My Gaming PC is around two months old. Over the past few weeks the PC has shut itself down on a number of



Setup 3. After the DISM scan completes, type sfc /scannow and press "Enter". Allow the scan to complete and fix any found issues. Final Words. The Kernel Power 41 error can be quite frustrating.



The Kernel-Power Event ID 41 is a critical system issue that can cause your Windows computer to shut down abruptly, seemingly without any apparent reason. In this blog, we'll guide you through five easy steps to ???



First of all I would recommend to update all the firmware drivers, and check for any Power Plan settings that might make the computer to lose power or enter an unauthorized sleep state. Additionally, Please check in System Event Viewer, for other related errors or warnings at the moment of the restart.



If I set the curve optimizer too low, my PC will crash and when I look back in the event viewer it will say kernel power 41. If the CPU drops voltage too quickly, your system will crash precisely as it did. Solution: increase vcore with an offset of +0.1v or maybe even +0.05v and that should solve your issue.



[SOLVED] Freeze system, kernel power 41, dual monitor, isn't ram or energy problem. Thread starter criiza; Start date Mar 11, 2021; Tags Its possible adding that extra screen was enough to get system asking for more power than PSU can supply so it shuts off less essential things to keep CPU running. Less essential to PC anyway, screens and



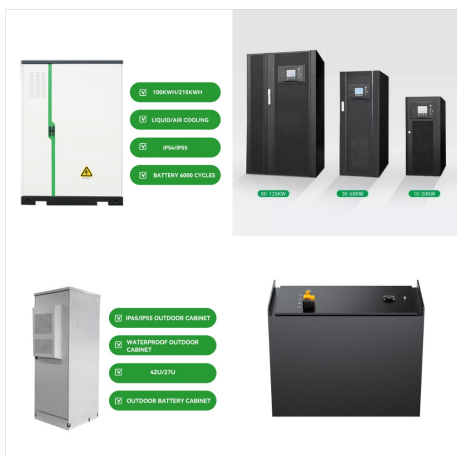
A Windows rendszeren a Kernel Power 41-es hib?j?t a Gyorsind?t?s funkci? is okozhatja, amelyet a rendszerind?t?si id?? felgyors?t?s?ra terveztek. Ennek megold?s?ra haszn?lhatja a System File Checker (SFC) eszk?zt. Nyomja ???



what power plan are you running in settings/system/power, click on the Additional power settings link under related settings? Are you on high performance? i see lots of pc that can cope with running full speed but crash at idle, it seems odd to me. you might want to run HWINFO and log system performance to see if any sensors offer a clue.



Scenari in cui pu? verificarsi l'errore Kernel-Power 41. Scenario 1: il sistema viene riavviato automaticamente a causa di un errore di arresto e l'ID evento 41 consiste in un codice di errore di arresto (controllo del bug).



Das Ereignis 41 Kernel Power bedeutet, dass etwas unerwartetes passiert ist, das das ordnungsgem?sse Ausschalten von Windows blockiert hat, und dass eine Meldung erscheint, die besagt: ???Das System wurde neu gestartet, ohne dass es zuvor ordnungsgem?ss heruntergefahren wurde. Dieser Fehler kann auftreten, wenn das System nicht mehr reagiert



Stack Exchange Network. Stack Exchange network consists of 183 Q& A communities including Stack Overflow, the largest, most trusted online community for developers to learn, share their knowledge, and build their careers.. Visit Stack Exchange



I built my PC about 2.5 months ago. In the past 2 months I have had a consistent issue where my PC will turn off and automatically turn back on while playing games and I get the Kernel Power event ID 41 Task category (63). This issue is ???



C???nh b?o Kernel-Power Event ID 41 tr?n Windows 10. L?>>?i Kernel-Power thAE??>>?ng li?n quan ?????n Event ID 41. Ngo?i ra, Event ID Kernel-Power 41 c?n ??i k?m v?>>?i c?c t?>><< kh?a (70368744177664),(2), m? b???n c? th?>>? s?>>- d?>>?ng ???>>? x?c ???>>?nh c?ch kh???c ph?>>?c l?>>?i c?>>?a m?nh.



Kernel-Power Event ID 41 does indicate that the system restarted without shutting down completely. You have taken many effective steps to troubleshoot the problem. Regarding your issue, the old WIFI driver may indeed cause system instability, but we ???



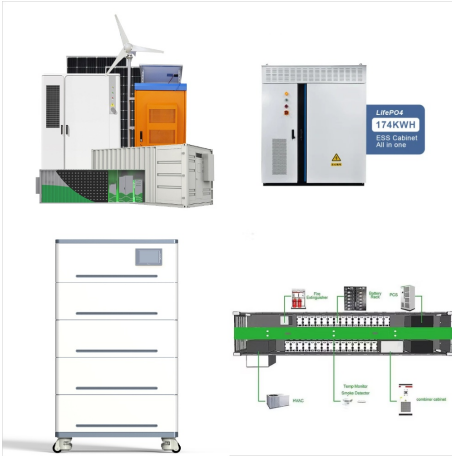
Das Ereignis 41 Kernel Power bedeutet, dass etwas unerwartetes passiert ist, das das ordnungsgemäße Ausschalten von Windows blockiert hat, und dass eine Meldung erscheint, die besagt: ???Das System wurde neu ???



Log Name: System Source:
Microsoft-Windows-Kernel-Power Date: 2/6/2022
12:01:23 PM Event ID: 41 Task Category: (63)
Level: Critical Keywords: (70368744177664),
Description: The system has rebooted windows



Kernel-Power 41(63) CPU5600x B550M BIOS zen3
" TLS ??? 10013???



Common causes of the Kernel-Power error include outdated Windows, enabled Windows fast startup, and faulty RAM or graphics card. Fix the error by updating Windows, disabling fast startup, reseating RAM and ???