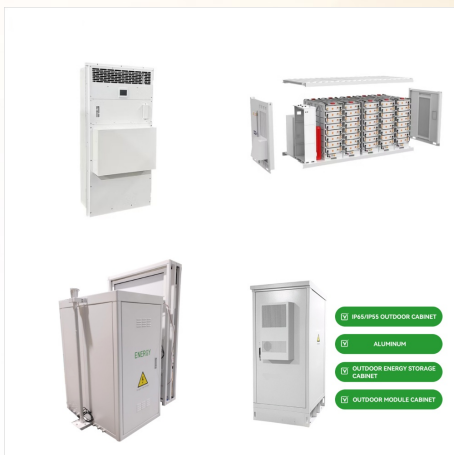
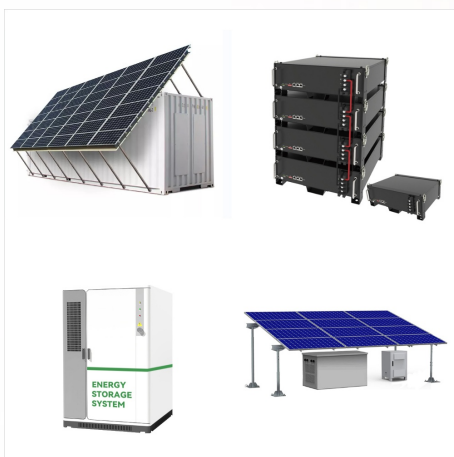




48 volts solar panels are the best solar panels to get to maximize the supply of solar energy to all home systems. However, if it is not possible to get panels of this voltage, it is recommended to ???



High Watt Solar Kits (From 300W? 1/4 ? Solar panels operate at a higher voltage than batteries can accept to make up for the transmission loss along the wires and to produce enough energy on a low sun day for the batteries to still charge efficiently. The charge controller takes care of that extra voltage so that the battery gets what it needs.



Our high-efficiency solar panels come in a variety of wattages and different styles like mono solar panels, bi-facial, split cell, and flexible solar panels from brands like Canadian Solar, Qcell, Longi, and more. At Solar Power Store, we offer technical support for our solar panels to make sure you're set up and ready to go when the time



-watt solar panels are more costly than those with lower wattages, they come with two primary benefits: higher module efficiency and lengthier warranties when compared to smaller DIY panels. Solar panel warranties typically cover the equipment itself, installation labor, or the efficiency of the panels over time with a performance



Spring up to three 400W portable solar panels and use with a DELTA Pro portable power station for input of 1600W. Additionally, EcoFlow portable power stations use an MPPT algorithm that ensures a constant energy supply. Unlike static solar panels, portable solar panels are easily moved and adjusted depending on where the sun is in the sky.



When solar panels are exposed to varying amounts of sunlight due to partial shading or facing different directions, parallel wiring reduces system losses. Each solar panel operates independently, meaning one panel's reduced output doesn't impact the output of the others. 2- If you have mixed solar panels with similar voltage ratings:



Supercharge your energy production with 400 watt solar panels! Harness the sun's power for maximum efficiency and reliability. Whether for your home, RV, or off-grid adventures, enjoy faster charging and reduced reliance on traditional energy sources with 400 watt solar panels.



A 450 watt solar panel often has 72/144 cells and it's closer to 77 x 39 inches in size. The exact dimensions of a solar panel depend on a model. Since commercial systems are large, the panels are often installed on the ground because there is not enough space on the roof of a building.



550 watt solar panels. A 550-watt solar panel generates a substantial amount of power compared to lower wattage panels. With higher wattage comes the ability to generate more electricity from a smaller array of panels, making them a valuable option for residential and commercial use. Home application of 550 W solar panels



At GoGreenSolar, we're here to provide guidance throughout the entire process of going solar: Design your dream system with sizing & layout recommendations from our seasoned solar advisors.; Skip the paperwork with our hassle-free permitting and interconnection services.; On-demand tech support to help navigate installation and accommodate any questions/concerns ???



A 400 W solar panel does what it sounds like ??? one panel produces an output of 400 watts of electricity, which yields approximately between 1.2 and 3 kilowatt hours (kWh) daily. How much electricity your panels actually generate on a day-to-day basis depends on a few key factors such as how much sunlight they get, your geographic location and the angle your ???



A typical 300-watt solar panel is 65.8 inches long and 36.1 inches wide. It takes up 16.5 sq ft of area. If you have a 1000 sq ft roof, and you can use 75% of that roof area for solar panels, you can theoretically put 45 300-watt solar panels on a 1000 sq ft roof. A typical 400-watt solar panel is 79.1 inches long and 39.1 inches wide.

48 WATT SOLAR PANEL



A 48V poly panel will cost approximately Rs. 25.5/watt. Q. Can I install a 48-volt solar panel for my household needs? Yes, a 48-volt solar panel is a good investment choice for powering household devices. Besides, it is also effective for commercial and industrial use. Q. What is the shelf life of a 48V solar panel?



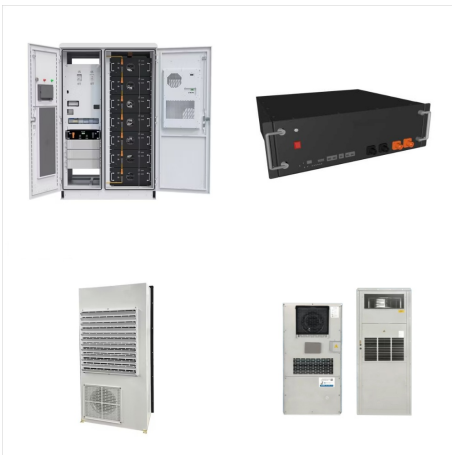
What are 500-watt solar panels used for? 500-watt solar panels are designed for larger solar power installations. They can be found in setups such as: Utility-scale solar farms Commercial jobs Ground-mount systems. Are 500-watt solar panels worth it for your home? 500-watt solar panels have their place, but it is generally not on the roof of



WATT 48 VOLT Monocrystalline Solar Kit is the power solution for owners with tiny, mobile, small remote, and even semi-permanent installations where power needs are frequented and needed more than an ever so often weekend retreats. 320W Mono Solar Panel; MidNite Classic MPPT Charge Controller- 150; MidNite Solar Combiner Box MNPV6



In general, 400 Watt solar panels have 144 half-cut solar cells with measurements similar to 72 cell solar panels. Of course, the number of cells in a module reflects on the 400W solar panel price. The dimensions of an average 400 Watt solar panel are about 79" X 39" X 1.4".



??? 8 X 415 Watt Monocrystalline Solar Panels ???
2 X 100AH 51.2V Lifepo4 Battery ??? 1 Sets X 50 Feet, Solar Extension Cables-Inverter PV input ???
8 X Sets of Mounting Z-Brackets; SGM-8K20: ??? 1 X 8000W 48Vdc 120/240Vac ???



Unlock incredible savings with our bulk solar panels by the pallet. Whether you're a solar installer, a commercial developer, or an avid DIY enthusiast, our pallet deals offer unbeatable value and convenience. 48 Volt Batteries Battery Chargers Used Batteries Power Inverters 100 Watt Solar Panels 200 Watt Solar Panels 300 Watt Solar



A panel's power rating is an important factor to consider. Higher values indicate greater energy production from a given module. A 480 watt solar panel is near the top of the food chain. Let's take a better look at these powerful solar panels. The pros of 480 watt solar panels. Less panels are required to create a given system, which saves you



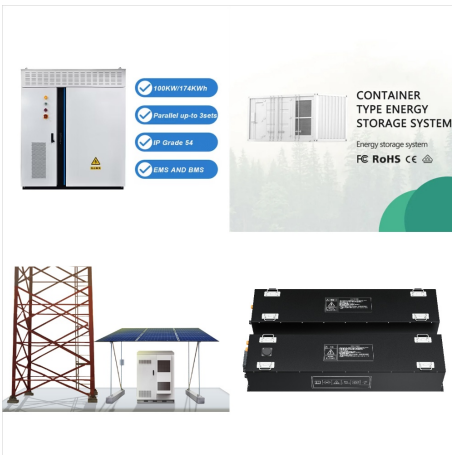
| 200 Watt Solar Panel | Premier 12V Off-Grid Solar Panel for RVs Cabins, Boats | 25-Year Output Warranty | UL Certified SKU: RS-M200. Dimensions: 58.7 x 26.8 x 1.2 in \$239.99 Unit price / Unavailable. COUPON 10% OFF. Ends at Nov 17th. code: EBF10. Copy code. Copied. MEGA 200 | 200 Watt Solar



Today's premium monocrystalline solar panels typically cost between \$1 and \$1.50 per Watt, putting the price of a single 400-watt solar panel between \$400 and \$600, depending on how you buy it. Less efficient polycrystalline panels are typically cheaper at \$0.75 per watt, putting the price of a 400-watt panel at \$300.



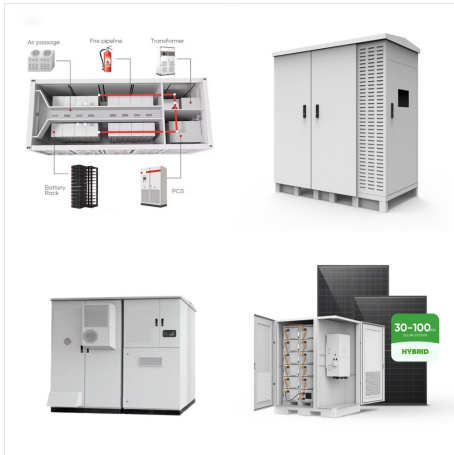
A solar panel wiring diagram (also known as a solar panel schematic) is a technical sketch detailing what equipment you need for a solar system as well as how everything should connect together. There's no such thing as a single correct diagram ??? several wiring configurations can produce the same result.



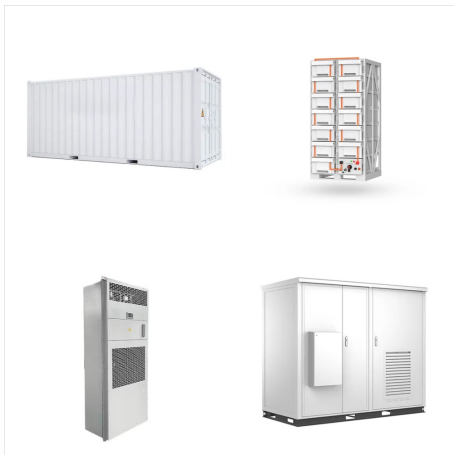
Autonomy ??? How long the power needs to last, like packing extra batteries. Experts recommend 3-5 sunless days. For three days, you'd need 1,200 watt-hours of storage. Next up, solar panels ??? these recharge your batteries like the sun recharging flashlight batteries. If you get 5 good sun hours per day, you'd need 240-watt solar panels.



The unit is available in 4 solar panel sizes: 32, 35, 48 or 65 watts. The main components are the same on all models with the choice of an adjustable, integrated or remotely installed solar panel. Designed to withstand severe hurricane and tornadic winds without panel adjustment; Available in 35 watt size with a venting capacity of 1,599



Today's premium monocrystalline solar panels typically cost between \$1 and \$1.50 per Watt, putting the price of a single 400-watt solar panel between \$400 and \$600, depending on how you buy it. Less efficient polycrystalline panels ???



WHAT IS INCLUDED WITH THE SOLAR KITS !
 ??? 1 X 8000W 48Vdc 120/240Vac Inverter Up to 6 units Parallel ??? 12 X 450 Watt Monocrystalline Solar Panels??? 4 X 200AH Lifepo4 Battery with Bluetooth??? 12 X Sets of Mounting Z-Brackets ??? 1 x 50 ???



48: 18V: 32.4V: 27V: 54: 20V: 36V: 30V: 60: 24V: 43.2V: 36V: 72: Solar panel nominal voltage calculation. Why is this important? How Many Amps Does a 100-Watt Solar Panel Produce? A 100W solar panel produces about 3.5 amps under ideal conditions. How Many Amps Can a 200W Solar Panel Produce?