

How big is a 60 cell solar panel?

60-cell panels are generally around 65 inches x 39 inches. In comparison, 72-cell panels are a bit larger, at about 80 inches by 40 inches. Many people want to know the physical size of solar panels, not just how many cells they hold.

How big is a residential solar panel?

Most residential solar panels contain about 60 cells in a 6-by-10 grid configuration. The frame and space between cells add a few extra inches, making the average residential panel about 65 inches by 39 inches, or 17.5 square feet. Keep in mind that these dimensions are neither exact nor universal.

Are 72-cell solar panels bigger than 60-cell panels?

72-cell solar panels have more photovoltaic cells, therefore, they are larger than 60-cell panels. When it comes to dimensions, 60-cell panels are usually built six cells wide and ten cells tall. 72-cell panels are also six cells wide but have an additional two rows of cells that make them a bit taller.

What size solar panels do I Need?

60-cell solar panels are the standard solar panel size for homes. They are usually 5.5 feet by 3 feet and weigh around 40 pounds. 72-cell panels are bigger, measuring around 6.5 feet by 3 feet, weigh about 50 pounds, and are typically considered commercial solar panels.

How much does a solar panel weigh?

Most home solar panels are about 5.5 feet x 3 feet and weigh roughly 40 pounds each. Most of the time, you won't see the size of solar panels expressed in feet. Instead, you'll see it's listed as the number of solar cells within a panel, with the most common solar panel sizes being 60-cell and 72-cell.

How big are commercial solar panels?

On the other hand, commercial solar panels typically feature 72 cells, with dimensions of approximately 3.25 feet by 6.5 feet. These panels cover an area of 21.13 square feet and weigh about 50 pounds. These larger panels are often chosen for more extensive solar projects.

# 60 CELL SOLAR PANEL DIMENSIONS



Most standard solar panels house 60 photovoltaic monocrystalline silicon cells (156mm x 156mm each). With cell spacing, the total panel dimensions come out to about 39-40 inches wide by 65-66 inches long, weighing around ???



Comparing 60-Cell and 72-Cell Solar Panels.  
Comparing 60-cell and 72-cell panels is important. It's not just about the number of cells. For businesses, the larger 72-cell panels are more useful. They fit better on large roofs and provide more energy. Crucial Dimensions: Length, Width, and Depth Analysis



SOLAR PANEL : CONFIGURATION: SIZE : 60 ???  
Cell System : 6 x 10 : 99 x 167.6 cm : 72 ??? Cell  
System : 6 x 12 : 99 x 195.5 cm : The extra space that comes with 72-cell solar panels is due to the additional photovoltaic (PV) cells inside the panel, which consequently gives it the potential to generate higher power outputs compared to their 60

# 60 CELL SOLAR PANEL DIMENSIONS



One person can easily carry a standard-size (60 cells) solar panel alone. The average weight for a residential solar panel is around 40 pounds (18 kg). More powerful solar panels can weigh between 50 to 70 pounds (23 to 32 kg). Solar Panel Weight Chart. Solar Panel Wattage Average Weight (Pounds) Average Weight (kg) 50 W:



With a 5400 Pa snow load and 2400 Pa wind load certifications, the SunSpark 335 watt solar panels can handle 110 pounds per square foot of snow and 130 mile per hour winds. SunSpark's solar panels are treated to resist salt mist, ammonia and blown sand so they will stand up better in harsh environments

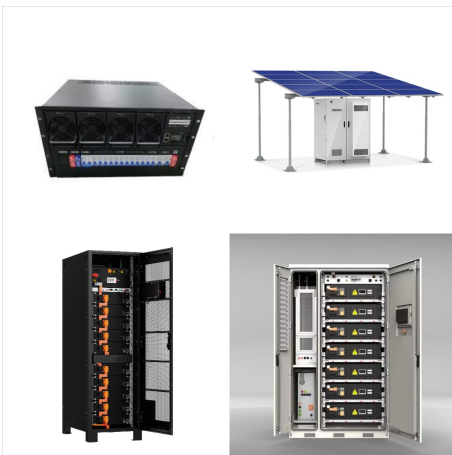


A typical solar panel size is about 1 metre wide and can be 1.6 m to 2 m long, while the thickness usually ranges between 3 to 4 cm. Typical solar panel weight ranges from 19 kg to 21 kg. (1.6-2m), compared to the width and thickness. The reason for this is the two types of available solar panels - 60 and 72-cell. Each solar panel is made of

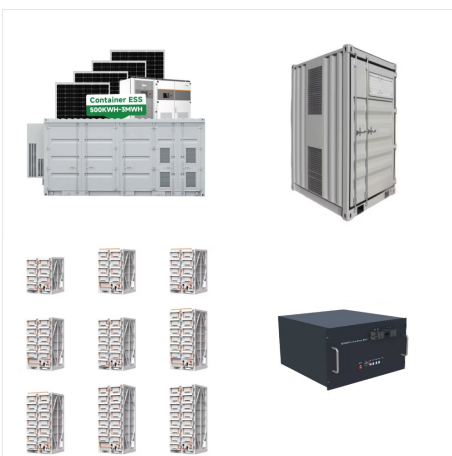
# 60 CELL SOLAR PANEL DIMENSIONS



The 60-cell solar panel is the standard size, structured as a 6x10 grid, and measures 3.25 feet by 5.5 feet. ii) 72-Cell Solar Panels. This is the average solar panel size-structured as a 6 x 12 grid and measures 3.25 feet by 6.42 feet. 72-cell solar panel is almost a foot taller than a 60-cell solar panel. Their size is a bit bigger and may



Get information on the LG 400W High Efficiency LG NeON(R) R Solar Panel with 60 Cells (6 x 10), Module Efficiency: 22.1%, Connector Type: MC4. Find pictures, reviews, and tech specs for the LG LG400Q1C-A6 LG utilizes responsive design to provide a convenient experience that conforms to your devices screen size. In order to get the best



Traditionally, solar panels can be categorised into two sizes: 60-cell and 72-cell solar panels. The size in watts corresponds to their physical dimensions and power output. For example, 60-cell solar panels measure 99 x 167.6 cm and produce 270 to 300 watts, while 72-cell solar panels have an average output ranging between 350 and 400 watts



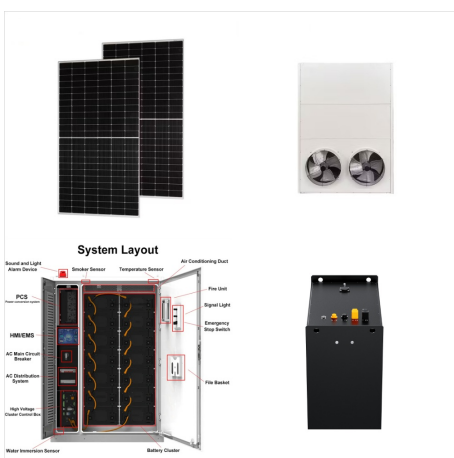
# 60 CELL SOLAR PANEL DIMENSIONS



? A solar panel's size and weight can impact performance, energy production, and installation location. Our guide explains how size impacts solar power. Most residential solar panels have 60 cells and measure about 65 inches by 39 inches, or 5.5 feet by 3.25 feet. However, the exact dimensions vary by brand.



This panel is a 60 cell solar panel featuring a sleek, all-black design coupled with outstanding power output. Its design makes it ideal for residential and commercial rooftop systems. Strong 40mm robust frame increases durability and strength and is able to withhold a heavy snow load up to 5631 Pa and large hail.



60-cell solar panels are most commonly used in residential installation. Whereas, 72-cell solar panels are often used in commercial businesses or large-scale industrial solar projects. The dimensions of the majority of 60-cell panels are around 39 inches (0.99 metres) x 66 inches (1.68 metres). Their power output ratings are between 350 and

# 60 CELL SOLAR PANEL DIMENSIONS



Solar Panel Sizes Differences: 72 solar cell panels are used for commercial solar while 60 cell panels are often used for home rooftop solar. Regardless of the size of your solar panel, Forme Solar will provide safe and durable options for your home or commercial property. Our primary goal is to reduce your monthly electricity bills from



However, more cells also increase the panel size and weight. 60 Cell Solar Panels. Most standard solar panels house 60 photovoltaic monocrystalline silicon cells (156mm x 156mm each). With cell spacing, the total panel dimensions come out to about 39-40 inches wide by 65-66 inches long, weighing around 40-50 lbs.



Solar Panel Dimensions: All You Need to Know. Understanding the Three Common Types of Panel Dimensions. The most common solar panel dimensions correlate to the solar cell sizes used. Usually, panels are designed for 60-cell, 72-cell, or 96-cell configurations, each correlating to different overall dimensions. Reading and Using a Solar Panel

# 60 CELL SOLAR PANEL DIMENSIONS



Solar panels generate clean energy and significant savings, but they aren't a one-size-fits-all solution. The size and weight of solar panels vary depending on the make and model, with most residential panels measuring about 5.5 feet ???



The dimensions of 60-cell solar panels are typically 39 inches by 65 inches, and they have a power output ranging from 250 watts to 320 watts. Advantages of 60-Cell Solar Panels. Easier to install due to their smaller size and weight. Cost-effective and efficient for residential installations.



Mission Solar 345W Solar Panel is a 60 cell module featuring class leading power output that makes it ideal for both commercial and residential systems, off-grid or grid-tie application. The Passivated Emitter Rear Contact (PERC) technology ensures excellent power output with the help of advanced cell structure.

# 60 CELL SOLAR PANEL DIMENSIONS



Solar panel dimensions depend on how many cells are in each panel, as cell size is pretty uniform across all brands of residential solar panels. Each cell is usually 156 millimeters by 156 millimeters, or 6 inches long and 6 inches wide. Residential panels usually contain 60 cells each, whereas commercial panels usually contain 72 cells or more.



? One often-overlooked factor in the solar buying process is the size of the panels. Solar panel dimensions impact installation costs, safety, transport, and the overall footprint of your project. Cells: 60: 72: Dimensions: 39??? x 65??? ???



As with the size, the weight of a solar panel can vary by manufacturer. Typically, 60-cell residential solar panels weigh around 40 pounds a piece. The larger 72-cell panels used for commercial solar installations can weigh 50 pounds each or more.



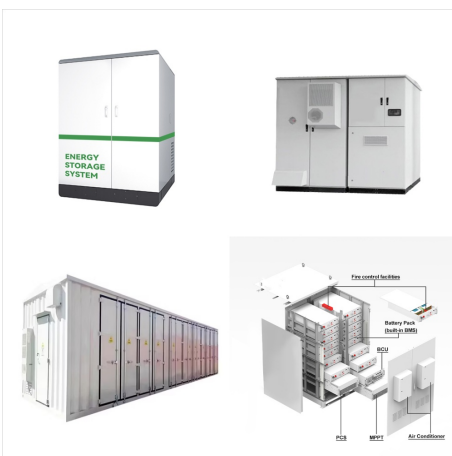
# 60 CELL SOLAR PANEL DIMENSIONS



Regular solar panels come in 60 cell panels or 72 cell panels. Each cell is 6 x 6 inches square. 72 cell panels are taller by 12 inches. Dimensions Weight; Q CELLS 60 Cell Solar Panel: 65.8 x 39.4 inches: 41 lbs: Q CELLS 72 Cell Solar Panel: 78.5 x 39.4 inches: 52.9 lbs:



Each size offers varying levels of power output, making them suitable for different purposes. Let's explore the three most common types: 60-cell, 72-cell, and 96-cell solar panels. 60-Cell Solar Panel Size. 60-cell solar panels are among the most common options for residential use. These panels typically measure around 66 inches by 39 inches.



Learning about different solar panel types, like 60-cell, 72-cell, and 96-cell, is key to optimizing solar panel efficiency. When you match the system size with your energy needs and consider the climate, you make smart ???

# 60 CELL SOLAR PANEL DIMENSIONS



Note: This data is courtesy of solar panel company Freedom Solar, Maxeon (previously SunPower), EnergySage and Forbes. Dimensions and measurements vary by manufacturer, and 96-cell solar panel dimensions tend to vary more than those of 60- and 72-cell panels.. Please remember that you'll find outliers, from small portable panels to 128-cell ???



72-cell solar panels have more photovoltaic cells, therefore they are larger than 60-cell panels. When it comes to dimensions, 60-cell panels are usually built six cells wide and ten cells tall. 72-cell panels are also six cells wide but have an additional two rows of cells that make them a bit taller.



Hitech Solar Solar Panel Series 250w Black 60 cell.  
Detailed profile including pictures, certification details and manufacturer PDF ENF Solar. Cell Size: 182.2x94 mm Glass Thickness: 2 mm More Product Info Company Profile Product Characteristics

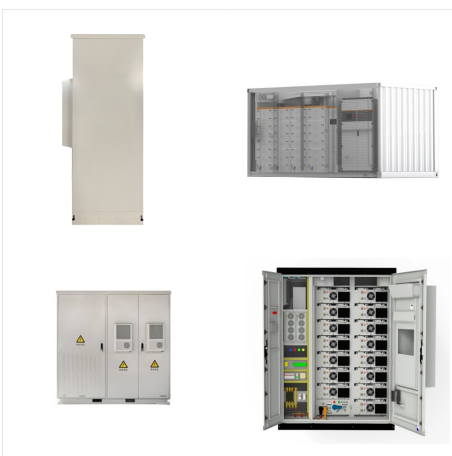
# 60 CELL SOLAR PANEL DIMENSIONS



Typically there are 2-configurations of cells used in solar panels for residential and commercial use; 60-cell and 72 cells. Some manufacturers, notably SunPower, offer a 96-cell panel, used in larger installations for businesses where demand is higher. The overall dimensions of the SunPower model are similar to those of the 60-cell panel.



Learning about different solar panel types, like 60-cell, 72-cell, and 96-cell, is key to optimizing solar panel efficiency. When you match the system size with your energy needs and consider the climate, you make smart choices for sustainable energy use.



For residential and commercial use, the two most commonly produced solar panel types are the 60-cell and 72-cell models. Here are the exact dimensions. Solar panel sizes: For 60 cells: Width: 95-110 centimeters (3.1 - ???)