

How big is a 60 cell solar panel?

60-cell panels are generally around 65 inches x 39 inches. In comparison, 72-cell panels are a bit larger, at about 80 inches by 40 inches. Many people want to know the physical size of solar panels, not just how many cells they hold.

How big are solar panels?

Residential solar panels consist of around 60 solar cells and are roughly 5.5 feet long and 3 feet wide. Solar panels usually weigh about 40 to 50 pounds. Commercial solar panels are generally larger than residential solar panels at 6.5 feet by 3 feet.

Are 72-cell solar panels bigger than 60-cell panels?

72-cell solar panels have more photovoltaic cells, therefore, they are larger than 60-cell panels. When it comes to dimensions, 60-cell panels are usually built six cells wide and ten cells tall. 72-cell panels are also six cells wide but have an additional two rows of cells that make them a bit taller.

What size solar panels do I Need?

60-cell solar panels are the standard solar panel size for homes. They are usually 5.5 feet by 3 feet and weigh around 40 pounds. 72-cell panels are bigger, measuring around 6.5 feet by 3 feet, weigh about 50 pounds, and are typically considered commercial solar panels.

How much does a 96 cell solar panel weigh?

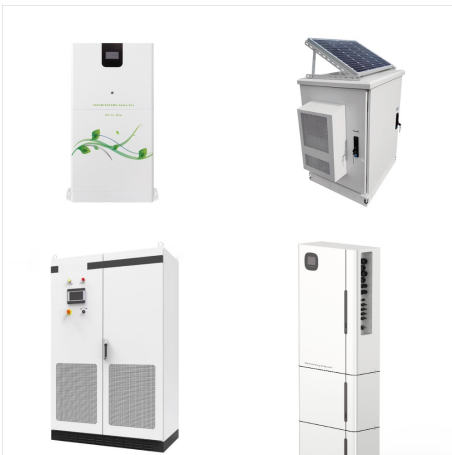
The 96 cell solar panel is characterized by an 8 feet by 12 feet grid configuration, covers an area of 17.5 square feet and weighs approximately 70 pounds. These panels are designed to handle the higher energy demands of large commercial or industrial properties.

How much does a commercial solar panel weigh?

Commercial solar panels tend to be about a foot longer than residential solar panels at 6.5 feet by 3 feet and can weigh 50 pounds or more. The exact size of residential and commercial solar panels depends on the manufacturer and their specifications.



? A solar panel's size and weight can impact performance, energy production, and installation location. Our guide explains how size impacts solar power. Most residential solar panels have 60 cells and measure about 65 inches by 39 inches, or 5.5 feet by 3.25 feet. However, the exact dimensions vary by brand.



Solar Panel Sizes Differences: 72 solar cell panels are used for commercial solar while 60 cell panels are often used for home rooftop solar. Regardless of the size of your solar panel, Forme Solar will provide safe and durable options for your home or commercial property. Our primary goal is to reduce your monthly electricity bills from



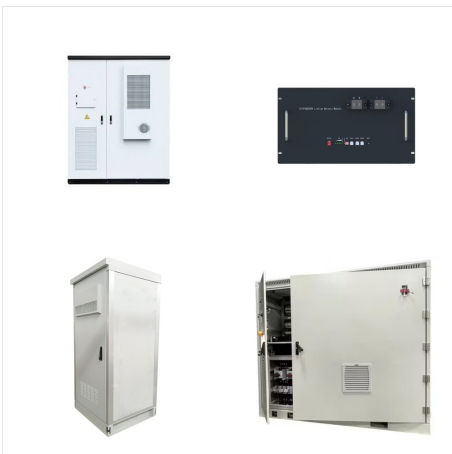
Standard residential solar panels contain 60 solar cells (or 120 half-cut solar cells) and typically generate anywhere from 350W to 500W of electricity. The size of these panels can range from 1.6m tall x 1.0m wide, to 1.7m tall x 1.0m wide. You might also hear of 120 half-cell panels (equivalent size to 60 cells) or 144 half-cell panels



A standard 60-cell solar panel weighs about 18kg (40 pounds), while a 72-cell solar panel weighs about 23.5kg (52 pounds). 72-cell panels are also taller than 60-cell panels, making them more difficult to carry and maneuver. This can be especially challenging when installing the ???



No matter your solar panel size, those powerful little photovoltaic (PV) cells stay basically the same. Next, a standard home generally needs solar panels with 60 or 72 solar PV cells. Meanwhile, a business usually needs solar panels with 72 or 96 solar PV cells. Finally, here are the average solar panel sizes: Residential 60-cell panel = 39



However, more cells also increase the panel size and weight. 60 Cell Solar Panels. Most standard solar panels house 60 photovoltaic monocrystalline silicon cells (156mm x 156mm each). With cell spacing, the total panel dimensions come out to about 39-40 inches wide by 65-66 inches long, weighing around 40-50 lbs.



Solar panels can have anywhere from 36 to 144 cells. Standard solar panel sizes are 60 cells and 72 cells. Compared to 60-cell solar panels, 72-cell panels have additional photovoltaic cells, thus the 72-cell panels can also have higher wattages and power output. However, this is not always the case.



Learn more about the size of one solar panel and options available. Comparing 60-Cell and 72-Cell Solar Panels. Comparing 60-cell and 72-cell panels is important. It's not just about the number of cells. For businesses, the larger 72-cell panels are more useful. They fit better on large roofs and provide more energy.



You need at least 1 72-cell solar panel or 2 60-cell panels in series to have a voltage high enough to charge 24V. If you're in a cold environment, most 150V MPPT solar charge controllers limit you up to only 2 72-cell panels in series, but you can do up to 3 6-cell panels in series and still stay within that 150-volt limitation.



A typical solar panel size is about 1 metre wide and can be 1.6 m to 2 m long, while the thickness usually ranges between 3 to 4 cm. Typical solar panel weight ranges from 19 kg to 21 kg. A typical 60-cell solar panel will weigh around 19 kg. A 72-cell panel, on the other hand, may weigh around 21 kg. Depending on the manufacturer and the



Solar panel size. Solar panels are equipped with photovoltaic cells, which convert For residential and commercial use, the two most commonly produced solar panel types are the 60-cell and 72-cell models. Here are the exact dimensions. Solar panel sizes: For 60 cells:



The typical size of a solar panel, such as the 60-cell variant, is designed in a 6x10 configuration and has dimensions of approximately 3.25 feet by 5.5 feet. 72-Cell Solar Panels. The typical dimensions of a 72-cell solar panel are about 3.25 feet by 6.42 feet, arranged in a 6 x 12 grid. This makes them nearly a foot taller than standard 60



The MSE345SX5T PERC 60 mono-crystalline solar panel is a 60 cell solar panel with the highest power output in its class. It's high efficiency and certified reliability make it ideal for utility grid-tied installations including ground-mounted and commercial rooftop solar panel systems.



It's natural to have questions about solar panel size when determining how many you can fit on your property. Generally, each panel is 66 inches by 40 inches. Residential panels usually contain 60 cells each, whereas commercial panels usually contain 72 cells or more. Refer to the solar panel size chart below for a comparison of average



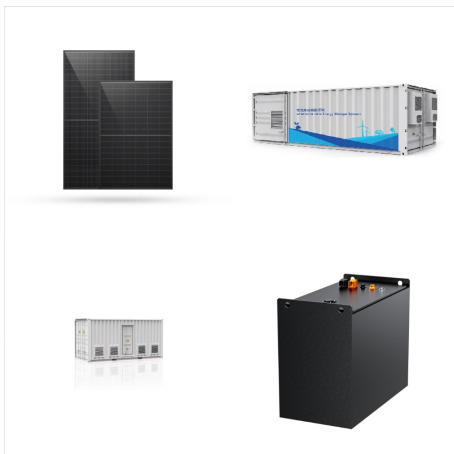
On average, 60 cell solar panels are 65 inches (1.65m) long, 40 inches (1m) wide, and about 1.5 inches (38mm) thick. The area of a 60 cell solar panel is generally about 18 ft<sup>2</sup> (1.68m<sup>2</sup>). 120 half-cut cell solar panels are roughly the same size as 60 cell solar panels, and 144 half-cut cell solar panels are roughly the same size as 72 cell



Usually, panels are designed for 60-cell, 72-cell, or 96-cell configurations, each correlating to different overall dimensions. Reading and Using a Solar Panel Size Chart. A solar panel size chart can help you figure out the optimal solar cell size and number for your requirements, taking into account your available roof space and energy needs.



Get information on the LG 400W High Efficiency LG NeON(R) R Solar Panel with 60 Cells (6 x 10), Module Efficiency: 22.1%, Connector Type: MC4. Find pictures, reviews, and tech specs for the LG LG400Q1C-A6 LG utilizes responsive design to provide a convenient experience that conforms to your devices screen size. In order to get the best



Learn more about the size of one solar panel and options available. Comparing 60-Cell and 72-Cell Solar Panels. Comparing 60-cell and 72-cell panels is important. It's not just about the number of cells. For ???



It will give a better idea of the average cost of solar panels right now in the market. 60 Cell vs 72 Cell Solar Panels: Installation and Maintenance. 60-cell panels are much easier and less time-consuming to install in residential spaces because of their compact size.



Traditionally, solar panels can be categorised into two sizes: 60-cell and 72-cell solar panels. The size in watts corresponds to their physical dimensions and power output. For example, 60-cell solar panels measure 99 x 167.6 cm and produce 270 to 300 watts, while 72-cell solar panels have an average output ranging between 350 and 400 watts



The extra dozen solar cells cause 72-cell solar panels to be larger than the 60-cell solar panels. According to Medium , here are the average sizes of these two types of solar panels: 60-cell solar panels are 1.65m (5.41 feet) tall and weigh about 20kg (44.90 lbs). 72-cell solar panels are 1.95m (6.40 feet) tall and weigh about 28kg (61.73 lbs).

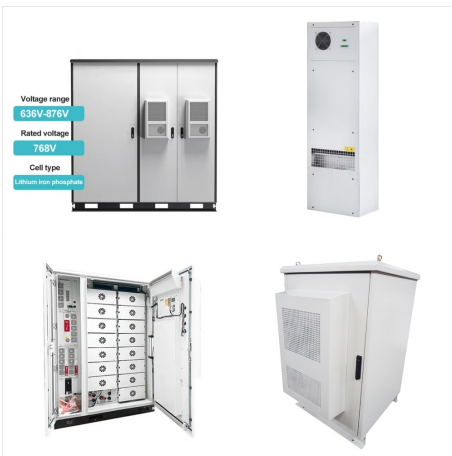




Monocrystalline vs. polycrystalline solar panels  
Solar panels are made of a bunch of solar cells put together to capture sunlight. Residential solar panels typically use 60 solar cells, whereas commercial modules consist of 72 or 96 cells.



72-cell solar panels are more efficient than 60-cell solar panels due to their larger size and higher power output. They can generate more electricity per square foot compared to 60-cell solar panels. The average efficiency of 60-cell solar panels is around 18.5%, while the average efficiency of 72-cell solar panels is around 20.5%.



? A solar panel's size and weight can impact performance, energy production, and installation location. Our guide explains how size impacts solar power Most residential solar panels have 60 cells and measure about 65 ???



Size. The number of cells in solar panels determines their size. A 60-cell panel is typically 65 by 39 inches in size, while a 72-cell panel is slightly larger at 78 by 39 inches. A 96-cell solar panel, which can measure up to 105 by 41 inches, is the largest of them all. In general, the size of a solar panel grows in proportion to the number



The weight of a 60 cell solar panel ranges between 42 and 47 lbs, which again, depends on the manufacturer. 60 cell solar panel size makes it quite convenient for residential solar panel installations, whereas in commercial systems slightly bigger panels are often used. Read All . ???



There are many types of solar panels varying in size depending on factors like solar panel efficiency, design, technology, and others. While the size for solar panels with the same cell count varies slightly, most 60 cells solar panels have size rounding the 39 in. x 66 in. and 72 cells solar panels have sizes of around 39 in. x 77 in., but panels with cell counts of 96, 120, and ???



The standard solar panel size, the 60-cell is structured as a 6x10 grid and measures 3.25 feet by 5.5 feet. 72-Cell Solar Panels. The average 72-cell solar panel size measures 3.25 feet by 6.42 feet and is laid out as a 6 x 12 grid, making them almost a foot taller than the 60-cell standard size panels. Given their large physical size, 72-cell



Learning about different solar panel types, like 60-cell, 72-cell, and 96-cell, is key to optimizing solar panel efficiency. When you match the system size with your energy needs and consider the climate, you make smart choices for sustainable energy use.