

What is a lithium-ion battery voltage chart?

The lithium-ion battery voltage chart is an important tool that helps you understand the potential difference between the two poles of the battery. The key parameters you need to keep in mind, include rated voltage, working voltage, open circuit voltage, and termination voltage.

How many volts does a 60 volt ebike battery charge?

Nominal voltage chart for 60V (16S) Li-Ion Ebike batteries showing the percentage. Assumptions: Your pack uses typical 18650 cells which charge to 4.2V and discharge to 3.0V. Disclaimer: This chart is a theoretical guide only. No responsibility is taken by for damage occurring from incorrectly charging your battery.

What is a battery voltage chart?

The battery voltage chart gives battery charge percentage and voltage for different lithium-ion battery packs and chemistries. It allows you to know how much battery you have left by looking at the voltmeter.

What is the ideal voltage for a lithium ion battery?

The ideal voltage for a lithium-ion battery depends on its state of charge and specific chemistry. For a typical lithium-ion cell, the ideal voltage when fully charged is about 4.2V. During use, the ideal operating voltage is usually between 3.6V and 3.7V. What voltage is 50% for a lithium battery?

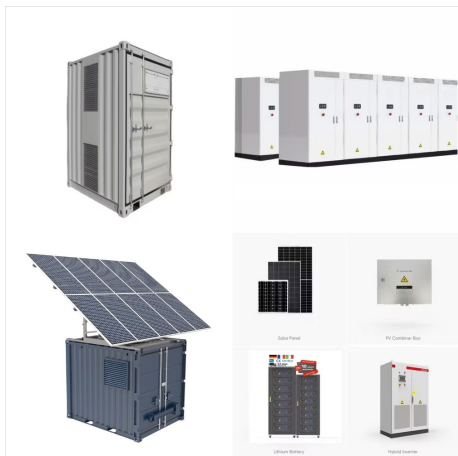
What are the key parameters of a lithium battery?

The key parameters you need to keep in mind, include rated voltage, working voltage, open circuit voltage, and termination voltage. Different lithium battery materials typically have different battery voltages caused by the differences in electron transfer and chemical reaction processes.

What is a 12V battery voltage chart?

Here is 12V, 24V, and 48V battery voltage chart: Generally, battery voltage charts represent the relationship between two crucial factors -- a battery's SoC (state of charge) and the voltage at which the battery runs. The below table illustrates the 12V lithium-ion battery voltage chart (also known as 12 volt battery voltage chart).

60V LITHIUM BATTERY VOLTAGE CHART



Explore everything from lipo battery low voltage alerts to lithium ion battery cutoff voltages in this detailed guide. Learn about lead acid battery voltages 60V LiFePO4 Batteries Lead Acid Battery Voltage Chart: Understanding the Basics.



Different voltages sizes of lithium-ion batteries are available, such as 12V, 24V, and 48V. The lithium-ion battery voltage chart lets you determine the discharge chart for each battery and charge them safely. A lithium-ion battery's nominal or standard voltage is nearly 3.60V per cell. Some battery manufacturers mark lithium-ion batteries



E-Bike Lithium Battery. 24V / 36V / 48V / 51.2V / 60V / 72V. Read more Rack-mounted High Voltage Lithium Batteries. Lithium Battery Voltage Chart. Battery State Voltage (V) Description; Fully Charged: 4.2: Maximum safe voltage: Nominal: 3.7: Average operating voltage: Discharge Cutoff: 3.0 ??? 3.2:

60V LITHIUM BATTERY VOLTAGE CHART



48V LiFePO4 Battery Voltage Chart. 48V LiFePO4 Battery Voltage Chart. The 48V LiFePO4 battery is a popular choice for various applications, from renewable energy systems to electric vehicles. To maximize its performance ???



60V Lithium Battery. 60V LiFePO4 Battery 60V 20Ah 60V 30Ah 60V 50Ah (SoC) of the battery and its voltage levels. This chart is instrumental in understanding how the battery's voltage changes as it discharges and recharges. It helps in optimizing battery usage and ensuring that the battery operates within its ideal voltage range to



The lithium-ion battery voltage chart is an important tool that helps you understand the potential difference between the two poles of the battery. The key parameters you need to keep in mind, include rated voltage, working ???

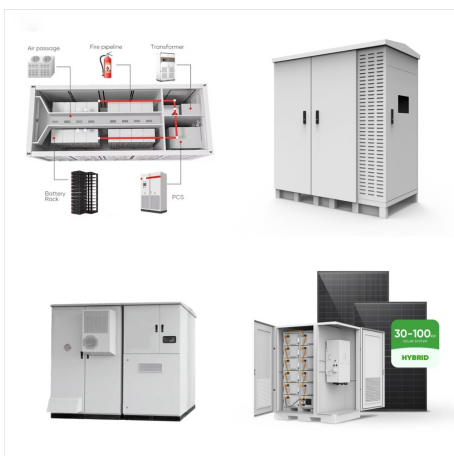
60V LITHIUM BATTERY VOLTAGE CHART



LiFePO₄. Lithium Iron Phosphate (LiFePO₄/LFP) batteries offer enhanced safety, faster recharge speeds, and a longer lifespan than standard lithium-ion batteries. With an exceptionally long cycle life, high depth of ???

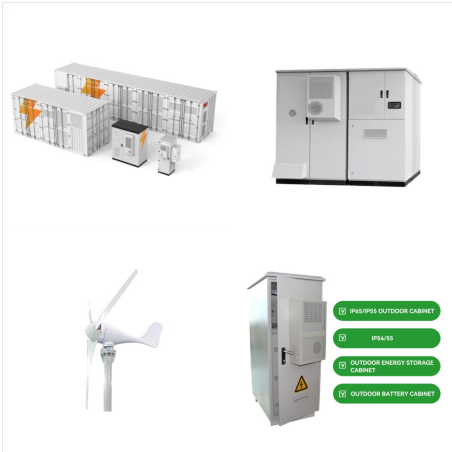


LiFePO₄ or lithium iron phosphate is a rechargeable battery known for having a long life cycle, high energy density, and for being safe to use compared to other lithium-ion batteries. They are commonly used to run solar electricity systems. They are less prone to thermal runaway unlike their other counterparts, which means it is less likely to catch fire or explode due to ???

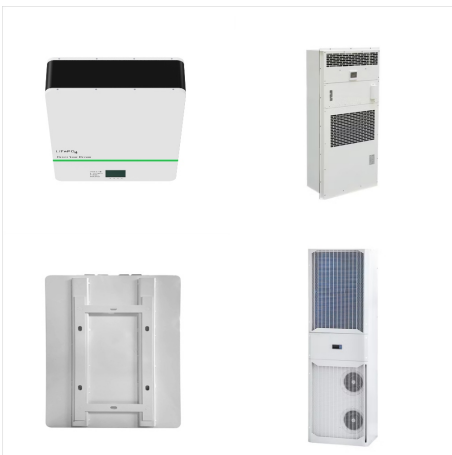


? Check battery's SoC via LiFePO₄ voltage chart (3.2V, 12V, 24V 48V) comparison. LiFePO₄ batteries offer stable voltage across various configurations. 60V Lithium Battery. 60V LiFePO₄ Battery 60V 20Ah 60V 30Ah 60V 50Ah 60V 50Ah (Small Size / Side Terminal)

60V LITHIUM BATTERY VOLTAGE CHART



Overview of LiFePO4 Battery Voltage. Lithium Iron Phosphate batteries are favored in the fields of electric bicycles, electric vehicles, forklifts, marine applications, AGVs, and floor sweepers due to their high energy density, long cycle life, and high safety. Lifepo4 batteries have become the preferred choice for high-performance applications due to their excellent ???



So a higher voltage battery pack is just a pack with more cells arranged in series. The voltage of a battery pack is not a static number though. As you use a battery, it's voltage will drop slowly. This drop is what is represented on the chart. When an individual lithium 18650 cell is fully charged, it's voltage is 4.2V.

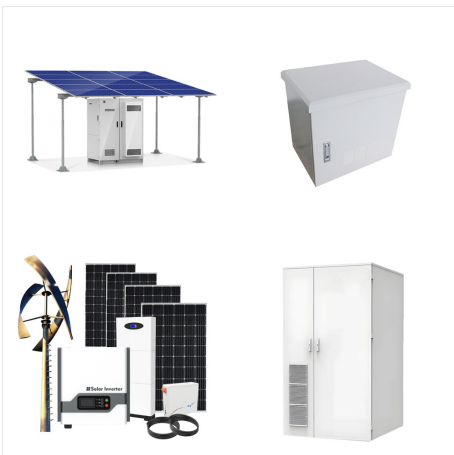


You will see the voltage fluctuating down (when you accelerate) and up (when you idle) during your ride. You will learn over time how to interpret your voltage display to make the right conclusions about the status of battery charge.

60V LITHIUM BATTERY VOLTAGE CHART



Overview of 60V Battery Types. 60V batteries come in various chemistries, with lithium-ion being one of the most popular due to its high energy density, lightweight nature, and longevity. Other types include lead-acid and nickel-metal hydride (NiMH) batteries. Each type has different charging requirements and characteristics, which can affect the overall performance ???



Learn their voltage characteristics with the LiFePO4 Voltage Chart for efficient and safe operation. Let's dive in! Tel: +8618665816616; Whatsapp/Skype: +8618665816616; Email: sales@ufinebattery ; LiFePO4, which stands for Lithium Iron Phosphate, is a type of lithium-ion battery chemistry known for its stability, high energy density, and



The voltage chart for a 12V LiFePO4 battery is compared to lead-acid batteries, showing different voltage levels at various charge states. Additionally, the article discusses battery charging voltage charts, emphasizing the use of hydrometers or voltmeters to determine a battery's state of charge.

60V LITHIUM BATTERY VOLTAGE CHART



48V LiFePO4 Battery Voltage Chart . 72V LiFePO4 battery voltage meter ??? Nominal voltage:76.8V ??? Charging voltage: 87.6V ??? Discharge cut-off voltage: 60V. Designed for 72V golf carts, electric cars, 6+ seater tour cars, and outboard motors.



Lithium-ion Battery Voltage Chart. Lithium-ion batteries are most used in power stations and solar systems, all thanks to the built-in additional layer of security. DC Input: 2x DC 8mm Ports: 11-17.5V (Working Voltage)???8A Max, Double to 8A Max; 17.5-60V (Working Voltage)???12A, Double to 24A/1400W Max. Blender (300W): 8.5H. Space Heater



Electric Scooter Battery Voltage Chart. The battery voltage chart gives battery charge percentage and voltage for different lithium-ion battery packs and chemistries. It allows you to know how much battery you have left by looking ???

60V LITHIUM BATTERY VOLTAGE CHART



LiFePO₄. Lithium Iron Phosphate (LiFePO₄/LFP) batteries offer enhanced safety, faster recharge speeds, and a longer lifespan than standard lithium-ion batteries. With an exceptionally long cycle life, high depth of discharge, and a wide range of operating temperatures, LFP batteries are becoming the chemistry of choice in EVs and home backup battery systems ???



Ebike battery voltage chart (36v, 48v, 52v, 60v, 72v)
As you can see, the nominal voltage and the peak voltage are not the same on an ebike. That is why when the ebike manufacturers advertise as having a 48-volt battery in their ebike, it actually comes with a 54.6-volt battery. Lithium Ion Battery Voltage Ranges (Full, Nominal, & Cutoff



The lead-acid battery voltage chart shows the different states of charge for 12-volt, 24-volt, and 48-volt batteries. For example, a fully charged 12-volt battery will have a voltage of around 12.7 volts, while a fully charged 24-volt battery will have a voltage of around 25.4 volts. 12V Lithium Automotive Battery. LiTime 12V 100Ah Group 24

60V LITHIUM BATTERY VOLTAGE CHART



According to the above voltage diagram of 48 V lithium iron phosphate battery, it can be learned that in the process of its capacity from 0% to 100%, which is a complete charging cycle, its voltage range is 42.00 V-52.00 V. And the same as the 12V lithium iron phosphate battery, in the process of uniformly increasing the amount of power, the degree of increase in ???



48V LiFePO4 Battery Voltage Chart . 72V LiFePO4 battery voltage meter ??? Nominal voltage: 76.8V ??? Charging voltage: 87.6V ??? Discharge cut-off voltage: 60V. Designed for 72V golf carts, electric cars, 6+ seater tour cars, and outboard motors.



LiFePO4 Cell Voltage Chart: Comprehensive Guide? 1/4 ? 3.2V 12V 24V 36V 48V 72V? 1/4 ? ??? Discharge cut-off voltage: 60V. Designed for 72V golf carts, electric cars, 6+ seater tour cars, and outboard motors. SOC: 72 Volt: 100% Charging: The following chart shows the correlation between SOC and LiFePO4 voltage for a lithium battery: SOC:

60V LITHIUM BATTERY VOLTAGE CHART



* Maximum initial battery voltage (measured without a workload) is 20, 60, and 120 volts. Nominal voltage is 18, 54, and 108. 120V MAX* is based on using 2 DEWALT 60V MAX* Lithium ion batteries combined having a maximum initial battery voltage (measured with a workload) of 120 volts and a nominal voltage of 108



E-Bike Lithium Battery. 24V / 36V / 48V / 51.2V / 60V / 72V. Read more Rack-mounted High Voltage Lithium Batteries. Common Myths About Lithium-Ion Battery Cut Off Voltage Myth 1: All Lithium-Ion Batteries Have the Same Cut Off Voltage. Not all lithium-ion batteries are created equal.



Voltage vs battery charge for 60V scooters (Mantis, Wolf, OX, OXO) July 24, 2020 15:46; Follow. The live reading of battery voltage will greatly improve your understanding of battery health and charging status vs. just looking at the battery percentage, which is just a rough translation of battery voltage. Battery voltage chart for

60V LITHIUM BATTERY VOLTAGE CHART



Our 60V 20Ah Lithium Battery Offers A 10-year Warranty, Customization, And Discounted Bulk Pricing. Battery Shop. Energy Storage Battery. UPS Battery; Telecom Battery; Battery voltage, capacity, and dimension. BMS charging and discharging current. Connector, case, and wire. Your own logo eg: silk print.