



Our brand-new lineup of Lithium-Ion LiFeP04 Marine Batteries feature the only true dual marine posts available in a deep-cycle Lithium-Ion LiFeP04 marine battery. For the first time ever you can now purchase this lightweight, durable, more powerful and maintenance free power source. CCA - 800, If you're boating or fishing and 800CCA won't



Banshee Deep Cycle Marine Battery Group Size 27-12V 77Ah 800 CCA . Unleash the Banshee this year with the new Group 27M deep-cycle marine battery with dual terminals. Banshee batteries are designed to withstand rigorous deep charges as well as long slow recharges. The Banshee marine deep-cycle battery is a direct replacement for Optima D27M



The 24M7 DEKA Marine Starting Battery (Group 24) provides 800 Cold Cranking Amps (CCA) and 130 minutes of reserve capacity (RC), making it ideal for marine applications. Key Features: 800 CCA: Reliable starting power in various marine conditions. 130-minute RC: Sustained power for marine electronics. Marine Design: Durable in harsh marine

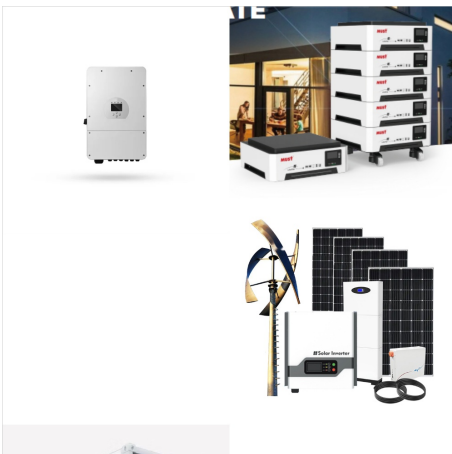
800 CCA LITHIUM BATTERY



C old Cranking Amps: 800 CCA . G roup Size: BCI: 31 . R eserve Capacity @ 25 Amps: 190 . C 20 Capacity: 105Ah (Amp Hours) I nternal Resistance: 5m . DC HOUSE 12V 100AH LiFePO4 Lithium Battery, Group 31 100AH Marine Battery with 100A BMS, Up to 15000 Deep Cycles Battery for RV, Solar, Trolling Motor, Travel Trailer, Energy Storage- Off



800 Cold Cranking Amps (CCA) Group Size 78; Our best flooded, non-AGM battery; High-cranking performance in cold to moderate climates; Meets or exceeds vehicle starting needs; 30 Month Warranty. Free Replacement / 6 Year Performance Warranty. Does This Battery Fit ???



Diesel Engines: Diesel engines typically need more power to start, especially in cold weather, so batteries for diesel trucks or vehicles often have 800-1,000 CCA or more. LiTime 12V 20Ah Lithium Starting Battery provides 650 CCA while 12V 140Ah Dual-Purpose Marine Battery provides 900 CCA. 2. Climate Considerations. 1) Cold Climates

800 CCA LITHIUM BATTERY



Our brand-new lineup of Lithium-Ion LiFeP04 Marine Batteries feature the only true dual marine posts available in a deep-cycle Lithium-Ion LiFeP04 marine battery. For the first time ever you can now purchase this lightweight, durable, more powerful and maintenance free power source. CCA - 800, If you're boating or fishing and 800CCA won't



Use only Lithium-Ion LiFeP04 chargers with this battery. Our new Super lightweight Lithium ion LifePo4 battery is 1/3 the weight and has 3x the life. Here are the Highlights. CCA - 800. Dual Terminal Marine Posts - Yes, real dual terminal marine posts - just like every other marine battery made since 1930.



Specifications. Cold Cranking Amps: 1150 CCA
Reserve Minutes: 205 min; Voltage; 12 Volts;
Weight; 77.8 Pounds; Terminal: SAE Terminal;
Dimensions: 16.8 x 11.1 x 11.9 inches; Our Review.
The Odyssey 31M-PC2150ST-M Battery is one of the best options to go for if you're shopping for batteries that will deliver massive starting power and impressive deep cycling ???

800 CCA LITHIUM BATTERY



MHTX30 increases Cold Crank output to 650 CCA. A comparable YB30L-B or 53030 battery provides only 300 CCA, YIX30L-BS creates 400 CCA, while GYZ32HL produces 500 CCA. That's an 30-115% increase in cranking power! Hybrid Battery Highlights: Faster Charge Time, Rapid Recovery of Voltage; Versatile "M-Flex" Terminal for Solid Multi Connection Posts



Factory Price - Powerful CCA Performance - Extremely Reliable . RJ TECH 12V marine batteries are similar-sized to lead-acid batteries, which makes upgrading to RJ TECH Lithium 12V Batteries a simple task, while offering six times the battery life ???



Marine starting battery plus deep cycle performance, LiTime dual purpose battery offers 900 CCA. PLUS, self-heating Bluetooth 5.0. New to Lithium Batteries I had many questions to change all my Bass Boat Batteries for Cranking, Trolling Motor and lots of Garmin Electronics! Over the top support came from Elaine!!

800 CCA LITHIUM BATTERY



To enable buyers the ability to make the optimal battery selection, the CCA rating lets you know the number of amps that are produced by a charged battery during a 30-second period while maintaining at least 7.2 volts at a temperature of 0°F (-18°C).

Do Lithium Batteries Use Cold Cranking Amps?

Generally speaking, most lithium batteries

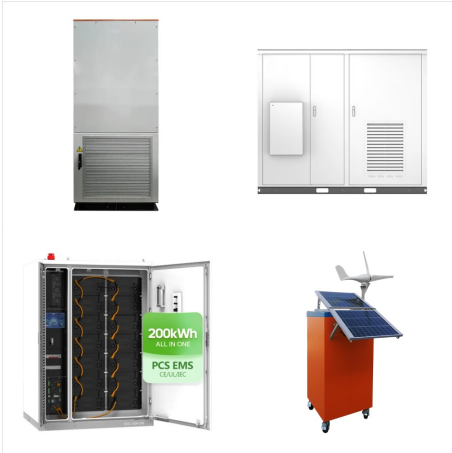


Group Size (BCI): 78; Cold Cranking Amps (CCA): 800 CCA; Cranking Amps (CA): 985 CA; Voltage (V): 12 Volt; Length (in): 10-3/4 Inch; Width (in): 6-7/8 Inch; Height (in): 7-1/4 Inch; Super Start Extreme batteries use a heavier grid design and specialized plate engineering to provide dependable power in the toughest conditions. Super Start



Factory Price - Powerful CCA Performance - Extremely Reliable . RJ TECH 12V marine batteries are similar-sized to lead-acid batteries, which makes upgrading to RJ TECH Lithium 12V Batteries a simple task, while offering six times the ???

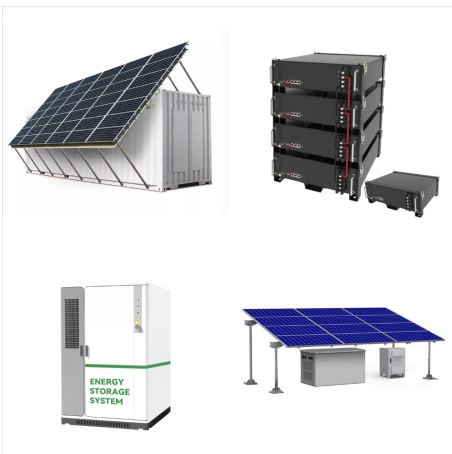
800 CCA LITHIUM BATTERY



Blue Top Marine Battery, Group Size 34M, 800 CCA
1 Battery Per Order of 1 30-Day Money Back
Guarantee !! FLASH SALE !! Both dual-purpose and
starting applications are available Quick Specs:
Volts 12v Length in. (mm) 10" (245mm) Width in.
(mm) 6.88" (168mm) Height in. (mm) 7.81" (191mm)
Weight lbs (kg) 38.4 lbs (17 k Lithium Ion Warning



Our brand-new lineup of Lithium-Ion LiFeP04
Marine Batteries feature the only true dual marine
posts available in a deep-cycle Lithium-Ion LiFeP04
marine battery. For the first time ever you can now
purchase this lightweight, durable, more powerful
and maintenance free power source. CCA - 800, If
you're boating or fishing and 800CCA won't



ATX20-HD HEAVY DUTY Series OEM Size Lithium
Battery (Direct Replacement) The Antigravity
Batteries ATX20-HD and ATX30-HD are part of our
HD (Heavy Duty) Series, specifically designed to
offer SIGNIFICANTLY more Amp Hours (6 Ah more
per battery) and Power than the original versions of
the ATX20/30 to meet the special needs of those
looking for the most compact yet ???



The Ultimate Line of Advanced Generation batteries is built with a powerful maintenance-free design, ultra-premium performance, and all-weather starting protection that discriminating drivers don't just want - they demand their vehicles. Cold Cranking Amp (CCA) at 0° F: 800; Cranking Amp (CA) at 32° F: 985; BCI Group Size: 34/78; Polarity

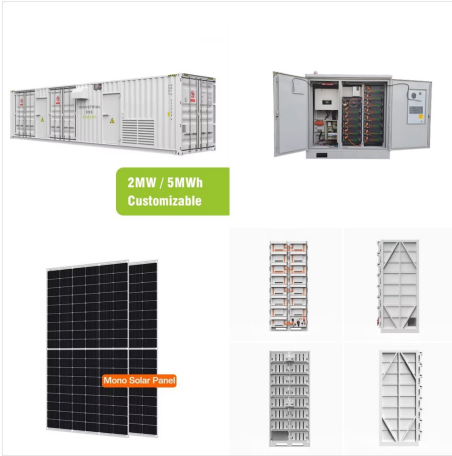


? 50 Ah, 800 CCA: 65 Ah, 850 CCA ??? As the Best Lithium CCA Batteries OEM Manufacturer for 2024, Redway Power leads the charge in B2B solutions with its LiFePO4 technology. Since 1996, the company has been perfecting lithium batteries that outperform traditional SLA options, especially in cold conditions.



Lithium Batteries: Often provide higher CCA ratings due to their superior energy density and discharge capabilities. Battery Type Typical CCA Range; Lead-Acid: 300-800 CCA: Lithium: 800-1200+ CCA: B. Temperature Effects. As temperatures drop, the chemical reactions within the battery slow down, reducing its ability to deliver power. Therefore

800 CCA LITHIUM BATTERY



Shop for the best Batteries for your vehicle, and you can place your order online and pick up for free at your local O'Reilly Auto Parts. Cold Cranking Amps (CCA): 800 CCA. Cranking Amps (CA): 985 CA. Group Size (BCI): 93. Reserve Capacity (min): 130 Minute



Buy OPTIMA Batteries High Performance 34M Sealed AGM Boat and RV Starting Battery, 800 CCA, Dual Terminal, Maintenance Free, Versatile Mounting: Batteries - Amazon FREE DELIVERY possible on eligible purchases (5A/Bank) Smart Marine Battery Charger, 12V Waterproof Onboard Boat Charger, Battery Maintainer and Desulfator for AGM, Lithium



Duralast Gold Battery BCI Group Size 78 800 CCA
78-DLG. Customize \$ 214 99 +\$22.00 Refundable
Core Deposit. Part # 78-DLG. SKU # 53436. Year
Warranty. Do Lithium Ion Battery Boosters work?
How to Change a Car Battery; Car Battery ???



Power your marine adventures with our 34 Lithium Marine Battery. Designed for efficiency and resilience, it offers superior performance in marine environments, ensuring your vessel stays energized longer. Cold Cranking Amps: 800. ???



Fishing for some isn't just a hobby, it's an addiction. The Pro-Guide deep cycle batteries are truly for the prosumers out there! The 24M800 is our highest rated deep cycle battery 135 Minutes of Reserve Capacity @ 25amps. The Pro-Guide Deep Cycle line is for more than the weekend warrior, look no further than the 24M800!



Lithium Batteries; Jet Ski Batteries. Shopping Cart 0 . Empty shopping cart. LION STOP-START 475TAGM 12v 800cca 80Ah AGM Battery. Automotive Batteries; Car Batteries; EFB Stop-Start Car Batteries; LION STOP-START 475TAGM 12v ???