



The Renogy 200 Watt 12 Volt Monocrystalline Solar Panel is one of the main components for any solar power (PV) system. The panel includes solar connector leads that extend from the junction box affixed 110-Watt Polycrystalline Solar Panel with 300-Watt Power Inverter and 11 Amp Charge Controller (4 /



How to Use This Calculator. 1. Find the technical specifications label on the back of your solar panel. Note: If your panel doesn't have a label, you can usually find its technical specs in its product manual or on its online product page. There should be a label on the back of your solar panel that lists its key technical specs.



How Many Amps Can a 200W Solar Panel Produce? A 200W solar panel can produce 6.89 amps for every peak sun hour. How Many Amps Does a 300W Solar Panel Produce? A 300W solar panel, assuming an operating voltage of 36V, produces approximately 8.33 amps under ideal conditions ($300W / 36V = 8.33A$). How Many Amps Does a 400w Solar ???

9 AMP SOLAR PANEL



Small solar panels: 50W and 100W panels.
Standard solar panels: 200W, 250W, 300W, 350W, 500W panels. There are a lot of in-between power ratings like 265W, for example. Big solar panel system: 1kW, 4kW, 5kW, 10kW system. These include several solar panels connected together in a system (2 ??? 50 solar panels).



Use our solar panel size calculator to find out the ideal solar panel size to charge your lead acid or lithium battery of any capacity and voltage. For example, 50ah, 100ah, 200ah, 120ah. 1- Multiply the battery amp-hours (ah) by battery volts to convert the battery capacity into watt-hours (Wh).



How much do solar panels cost on average? Most people will need to spend between \$16,500 and \$21,000 for solar panels, with the national average solar installation costing about \$19,000.. Most of the time, you'll see solar system costs listed as the cost per watt of solar installed so you can easily compare prices between quotes for different system sizes.

9 AMP SOLAR PANEL



12V 100-Watt Monocrystalline Bundle Kit Solar Panel with Wanderer 10 Amp Charge Controller (9) Questions & Answers (4) Hover Image to Zoom. Share. Print \$ 172. 28. Pay \$147.28 after \$25 OFF your total qualifying purchase upon opening a new card.



Rooftop solar panel package offering 200 watts of power, includes solar controller, cables, and mounting hardware, BONUS 200 watt inverter. FREE SHIPPING. 30-amp single-bank, Bluetooth(R) PWM Solar Controller (GP-SB-PWM-30-BT) 25??? of solar output cable ??? RED (#10)



With the Zamp Solar's Obsidian line, you can combine the Zamp 45 watt, 90 watt, or 100 watt panels for flexible power, and complete your kits with the 15 and 30 Amp integration kits. The integration kits will come with the charge controller, solar roof port and all the pre-terminated connecting wires.



6- Number of solar panels in each string: In each string, how many solar panels are wired in series? MPPT Solar Charge Controller Calculator. Solar panel Wattage (W): i recently bought a 200 amp, 12volt batter with blue tooth, 40 amp Renogy charge controller, 2-100 watt solar panels. from your examples above with 4-100 watt panels, i could



A 100W solar panel generates about 5.5 amps, a 200W solar panel 11.1 amps and 2 x 150W solar panels 16.6 amps. Divide your solar panel's VMPP by its rated watt output and you get the amps. A 100W 12V solar panel with an 18V VMPP can produce up to 5.5 amps ($100 / 18 = 5.5$). How to Calculate Solar Panel Amps



The best way to gauge how many solar panels you need is to understand the power load needed for your system. Power is measured in watts, and the capacity is commonly measured in Watt-hours (multiplying power output in watts by the required number of hours of operation multiplied by a safety factor of 1.5-2).



Plug and play solar kit complete kit includes a 200W solar suitcase, a 20A waterproof Voyager charge controller, and alligator clips. Compatible with multiple kinds of 12V batteries, easily add to your existing system. Remarkable efficiencyRenogy solar panels using ???



Solar panels are an essential part of generating solar energy, and we will be discussing 15 amp solar panels in this article. Solar power is an increasingly popular source of energy, for many homeowners and businesses. Although the initial cost may be hefty in many instances, this renewable source of energy saves you hundreds of dollars, off



The size, or Wattage, of your solar panel array depends not only on your energy needs but also on the amount of sunlight that's available in your location, measured in Peak Sun Hours. The Amp rating on the fuse/circuit breaker needs to be at least 1.25 times greater than the maximum current (amps) allowed to flow through it.

9 AMP SOLAR PANEL



An "Air Mass" of 1.5; A "Solar Irradiance" of 1000 Watts per square meter (W/m²) And a "Solar Cell Temperature" of 25°C. Manufacturers measure various aspects of a solar panel's output under these STCs and provide this information as solar panel ratings.



A solar panel's power output is dependent on the size of the panel and its efficiency. The solar panel efficiency is dependent on temperature, insolation and shading, and direction. For example, a 250-to 400-watt solar panel could produce around 14-24 amps in ideal conditions.



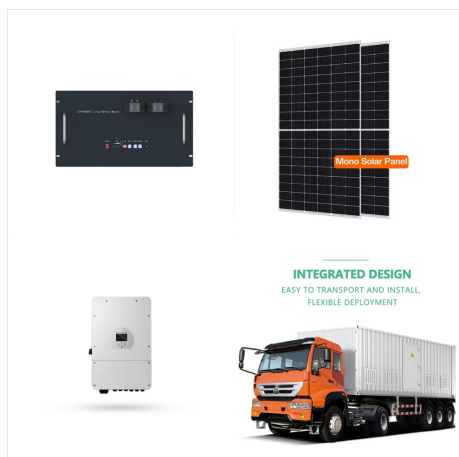
Interlocking system allows for a simple installation that is reliable and safe. Most powerful 12 Volt panel on the market. Includes MC4 parallel connectors to plug into existing Go Power! solar ???



Amps vs watts vs volts in a solar panel together produce, store, and transmit electricity. The potential difference in the solar system is determined by volts. The solar panel-generated electricity is determined by amps. Watts also known as the power of solar panels is the overall output calculation of watts one by current and voltage product.



The number of solar panels you need depends on the following factors: Your solar panel needs; Your usable roof area; Solar panel dimensions; Photovoltaic cell efficiency. So, for example, if you have a small roof, it might be a good idea to invest in fewer highly efficient panels. Typically, the efficiency of solar panels ranges from 15-20%

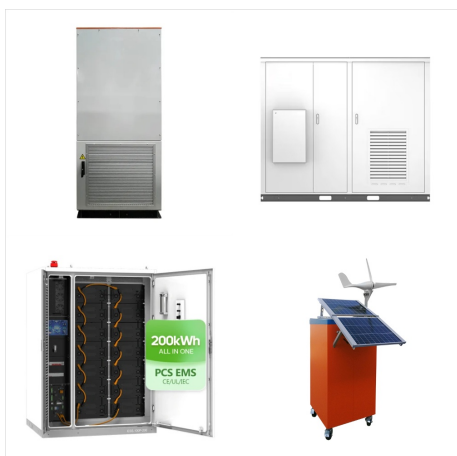


Dividing the battery amp-hours (Ah) by the solar panel's output amps (Ah ? charging amps) is the most inaccurate way to calculate the battery charge time. Instead, use this formula: Turns out, 100 watt solar panel will take about 9 peak sun hours to fully charge a 12v 100ah lead acid battery from 50% depth of discharge.

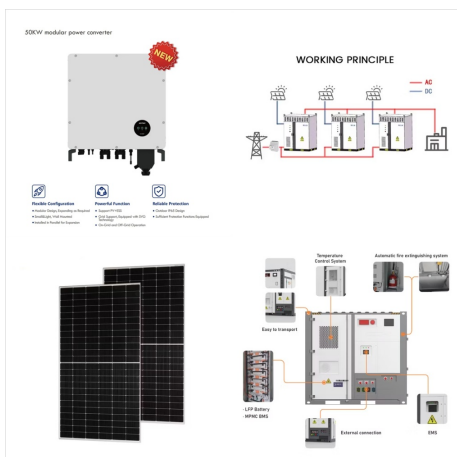
9 AMP SOLAR PANEL



If you need different power requirements, check out 8.1 kW solar systems. How Big is a 9 kW Solar System? Considering that each panel has a size of approximately 17 sqft, a 9kW solar system consisting of 30 panels would have a total footprint of 510 sqft. How Many kWh Does a 9kW Solar System Produce? (Load Per Day)



Solar Panel Kit 20W 12V Monocrystalline, Battery Maintainer +10A Solar Charge Controller + Extension Cable with Battery Clips O-Ring Terminal for RV Marine Boat Off Grid System. 4.3 out of 5 stars. 459. 200+ bought in past month. \$29.97 \$ 29.97. 10 amp solar panel for rv



100-watt solar panel will store 8.3 amps in a 12v battery per hour. 300-watt solar panel will store 25 amps in a 12v battery per hour. 400-watt solar panel will store 33.3 amps in a 12v battery per hour. 500-watt solar panel will store 41.6 amps in a 12v battery per hour. 600-watt solar panel will store 50 amps in a 12v battery per hour.

9 AMP SOLAR PANEL



This solar kit comes with the tools necessary for a new system: one Renogy 30-Watt 12-Volt Monocrystalline Solar Panel, one 5 Amp PWM Charge Controller, a pair of 57 in. Ring Connectors, a pair of 55 in. Alligator Clips, and one CIG Connectors. Start your solar adventure with a Renogy Starter Kit.



BougeRV MPPT Solar Charge Controller 30A, w/ Low-Temp Cut-Off, APP Control, Backlit LCD, 30 Amp Solar Panel Regulator 12V/24V for LiFePO4, SLD, Gel, FLD, AGM Battery, RV, Marine, Upgraded . Visit the BougeRV Store. 4.2 4.2 out of 5 stars ???

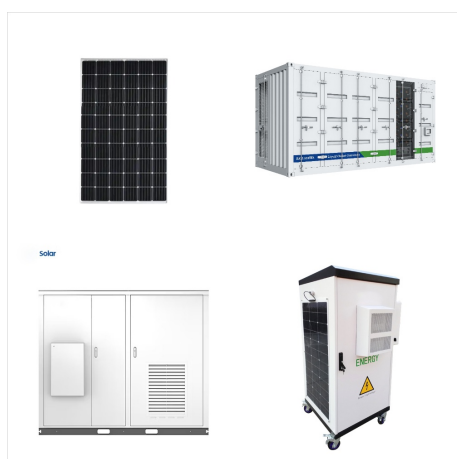


Now you can just read the solar panel daily kWh production off this chart. Here are some examples of individual solar panels: A 300-watt solar panel will produce anywhere from 0.90 to 1.35 kWh per day (at 4-6 peak sun hours locations).; A 400-watt solar panel will produce anywhere from 1.20 to 1.80 kWh per day (at 4-6 peak sun hours locations).; The biggest 700 ???

9 AMP SOLAR PANEL



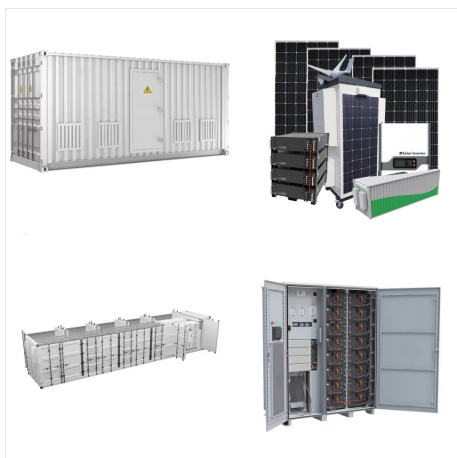
Kit components includes: (3) 100-Watt monocrystalline solar panel, user adjustable LCD 30 Amp solar charge controller, 40 ft. of UL Listed 12 AWG solar cable, all necessary connectors for wiring, and all the necessary mounting hardware; Perfect for cabins, RV"s, boats, and more; Grade A solar cells; Heavy-duty anodized aluminum frame



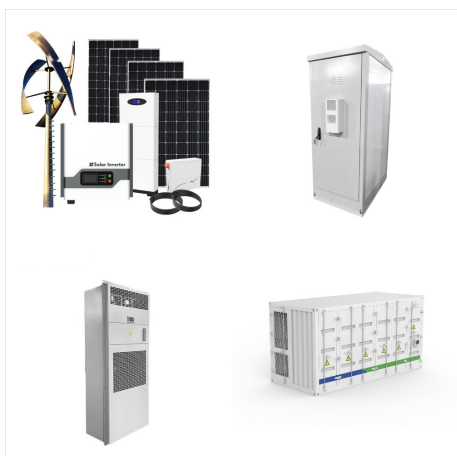
Solar Array Volts & Amps Wiring Diagrams: This diagram shows two, 5 amp, 20 volt panels wired in series. Since series wired solar panels get their voltages added while their amps stay the same, we add 20V + 20V to show the total array voltage and leave the amps alone at 5A. There is 5 Amps at 40 Volts coming into the solar charge controller.. This diagram shows three, 4 amp, ???



Solar Panel Battery Amp Hours, Solar Panel Size and Usage Chart. Amp Hours (12v battery) Solar Panel Size: Estimated Usage: 12ah: 30 watts (1.6 amps per hour) 1.5 hours: 15ah: 40 watts (2.4 amps per hour) 1.9 hours: 20ah: 50 watts (2.9 amps per hour) 2.5 hours: 35ah: 80 watts (5 amps per hour) 4.3 hours: 50ah:



The GP-PV-190M 190 watt Solar Module from Go Power! is a high-efficiency monocrystalline solar module that provides outstanding performance and cost-effective solar power for high-end off-grid and mobile applications. This solar module is built to last and features a 25-year limited power output warranty.



72-cell solar panel size. The dimensions of 72-cell solar panels are as follows: 77 inches long, and 39 inches wide. That's a 77x39 solar panel; basically, a longer panel, mostly used for commercial solar systems. 96-cell solar panel size. The dimensions of 96-cell solar panels are as follows: 41.5 inches long, and 63 inches wide.



Solar panels output more than their nominal voltage. For example, a 12v solar panel might put out up to 19 volts. MPPT controllers will have an amp reading for it, for example a 40 amp MPPT controller. Even if your panels have the potential to produce 80A of current, an MPPT charge controller will only produce 40A of current, no matter what