



How do I size a generator for a 2000 sq ft house?

To properly size a generator for a 2000 sq ft house, it's important to consider factors such as the number of occupants, electrical load, and whether there are any high-power appliances like air conditioning. A whole house generator sizing calculator can help determine the appropriate size in kW or watts needed to power the house.

What is the best generator for a 2000 sq ft house?

Whether you're experiencing an outage or simply need power on-the-go, the Champion Power Equipment 100813 generator is a suitable option for keeping your home running smoothly. The DuroMax XP10000E Gas Powered Portable Generator is a reliable and powerful option for running a 2000 sq ft house.

How many watts a portable generator can power a whole house?

If you want a portable generator that can power a whole house, you're looking for at least a 10,000 watt generator or a likely more in the 15,000 watt portable generator range. This simple calculator will quickly show you what size in Kw or Watts of a generator you might need to power your house. This tool is just an estimate.

Does Generac offer a managed power solution?

Managed Whole House Coverage - You can get more coverage with less generator, up to whole-house coverage, by pairing a smaller generator with one of Generac's load-shedding options. This creates a managed power solution where non-essential circuits are shed when the generator approaches maximum capacity.

How much power do you need for a home backup generator?

You will likely need at minimum a 10,000 Watt or 10kW generator to power a whole house. There are portable generators that are cheaper than stationary home backup generators, in the 10,000 and 15,000 watt range. But likely, if you want a true home backup generator system, you will want a stationary generator in the 16,000kW and higher range.

Why should you buy a Generac portable generator?

# A GENERAC GENERATOR FOR POWERING A 2000 SQ FT HOUSE



Generac portable generators bring the power you need both at home and on the road without the fuel costs, loud noises, or added hassle. With a PWRcell® Solar + Battery System, you'll use clean energy to help save on utility bills and provide your own backup power in case of an outage.



Growatt offers a range of high quality, efficient solar generators that are perfect for powering a 2,000 sq ft house. Their products utilize advanced lithium batteries to store solar energy efficiently and provide steady, reliable power when grid electricity is unavailable.



Use our dealer locator to find a dealer who can help you find the solution that's right for you! Find out how much generator you need for backup power, jobsite power, or recreation power with ???

# A GENERAC GENERATOR FOR POWERING A 2000 SQ FT HOUSE



But if any of the lines draw 4 kW power, you need a generator with a total power output of 8 kW. This is not an issue in Europe and elsewhere with the two-wire systems. To select the correct size generator for the entire power demand of your house, you should measure the actual currents on the two 120 V lines, as detailed below. Sizing procedure



The 5 Best Whole House Generators of 2024  
Generac Guardian Wi-Fi Enabled Standby Generator In contrast to a portable generator, a whole house generator will power many more appliances for as



When it comes to powering a 2000 sq. ft. house, the question of what size generator to use can be daunting. But fear not, as we have the answers you need to ensure a reliable power supply for your home. So, to make this clear, a generator capable of producing at least 30 kWh on average daily is essential to meet the demands of a house of this size. This ???

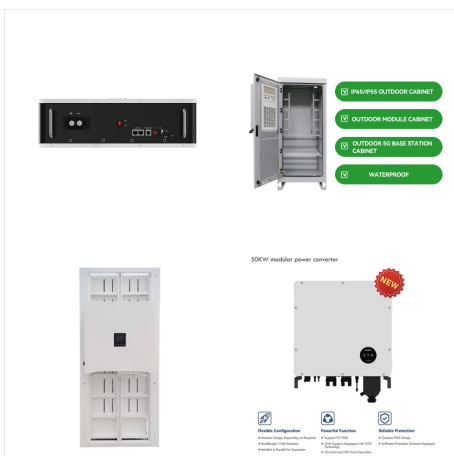
# A GENERAC GENERATOR FOR POWERING A 2000 SQ FT HOUSE



Find out what size generator you need to power your whole house and go green. Buyer's Guides. Buyer's Guides. Detailed Guide to LiFePO4 Voltage Chart (3.2V, 12V, 24V, 48V) Generally speaking, a 2000-watt solar generator should be enough to cater to the needs of a typical house. A solar generator typically includes photovoltaic solar

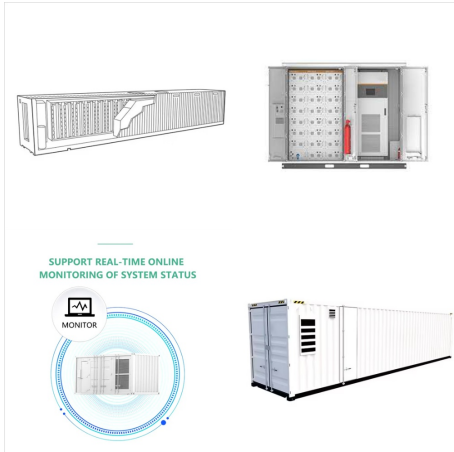


Generac generators typically range from \$2,000 to \$5,000, depending on the size, with options available from 7 to 24 kW for whole house units. In addition to the generator unit cost, the budget for installation falls between \$3,000 and \$5,000 on average. To power a 2000 sq ft house, a generator in the range of 20-22 kW is generally suitable

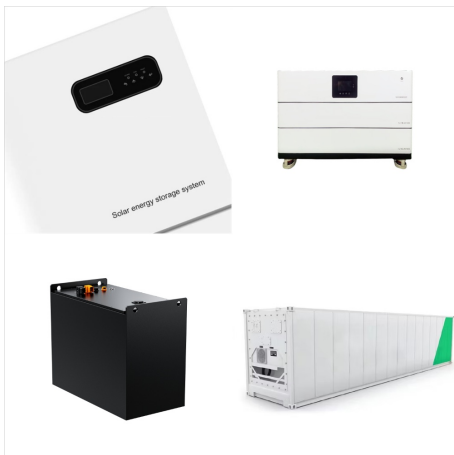


When it comes to powering a 2,000 square foot house, a reliable generator is essential. Whether it's for backup during power outages or to provide electricity in remote areas, a generator can be a lifesaver. while the base cost of a Generac generator for a 2,000 square foot house may be relatively affordable, it is important to consider any

# A GENERAC GENERATOR FOR POWERING A 2000 SQ FT HOUSE



A 20KW generator should be able to fully power a small house (2,000 square feet.) When it comes to bigger homes with higher power requirements, if not able to provide full power, a 20KW generator will still provide enough power to power the absolute essential appliances and many other smaller ones, ensuring that any power outage is not a fight



For the most part, a 22kW home standby generator should be able to run most houses that are between 2000 and 3000 square feet. A 22kW home backup generator can provide emergency power for a whole house, as long as you do not run all your appliances at the same time. The 22-kilowatt size is probably large enough for providing emergency power to



When it comes to powering a 2000 sq. ft. house, the question of what size generator to use can be daunting. But fear not, as we have the answers you need to ensure a reliable power supply for your home. So, to make this clear, a generator capable of producing at least 30 kWh on average daily is essential to meet the demands of a house of this size. This ???



# A GENERAC GENERATOR FOR POWERING A 2000 SQ FT HOUSE



To contact Generac customer care, give us a call at 1-888-436-3722. Our customer care center is available 24 hours a day, 7 days a week, 365 days a year. Speak with a customer representative for customer and technical support to ensure peace of mind and dependable service for your Generac product.



Prepare your home for power outages with the best home standby generator from Generac, the market leader. Skip to main content. Residential; Business; Residential; Business; We're proud that 8 in 10 homeowners with backup power have chosen Generac. 24/7/365 Customer Service. We know outages don't only happen 9a-5p. That's why you can

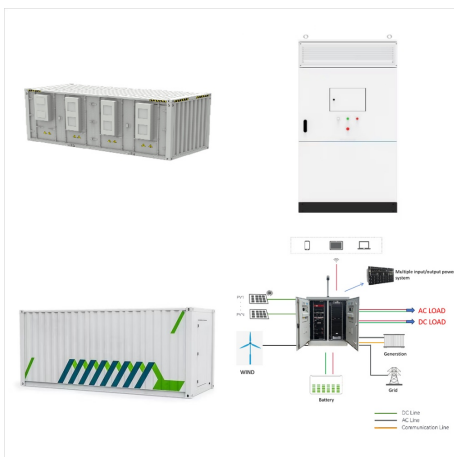


How to Use the Whole House Generator Sizing Calculator. Using our free whole house sizing calculator is simple and will give you recommendations in three quick steps: Enter your home's square footage and ZIP Code. This information is used later in the calculation as a baseline. Select the size of your air conditioner.

# A GENERAC GENERATOR FOR POWERING A 2000 SQ FT HOUSE



That being said, let's look at how you can calculate what size generator your home needs. Calculate what size generator you need in 3 simple steps. To calculate what size generator you need to power your whole home, follow these 3 steps: Step 1: List out every appliance you want to power.



So, if you're wondering, "what size generator do I need to power a 2000 sq ft house? Generally, an 18K watts generator easily covers a 2000 square foot home. Moreover, it is the right size generator for you to run your heating and cooling system at the same time as all the appliances of the whole home.



This all in one kit is ready to be installed by a licensed professional to keep you and your family protected during a power outage. 7. Generac 7043 22,000W. Whole house generator sizing (2,000 square foot home) Generator break in! Honda EU2200i Review; Find Used Generators Fast! Recent Posts.

# A GENERAC GENERATOR FOR POWERING A 2000 SQ FT HOUSE



square feet of houses can be powered with these generators. You can rely on 22 kW to 45 kW generators from Generac to power your house during power cuts. Besides running your centralized air conditioner and other heavy electronic gadgets, you can also use your heating system. A whole-house generator is available from \$2000



Calculate what size generator you need for your house, camper, RV or air conditioning unit. Get a generator that has enough power for your needs. Skip to content you should look at 15,000 Running watts generators, like the duromax XP15000EH, or generac's GP15000E. Whole house generator sizing (2,000 square foot home) Generator break



watt generators; 4000 watt generators; 5500 watt generators; 6500 watt generators; how to easily tune up your generator; power needs menu toggle. rv & camping appliances; generator wattage chart; generac generators; predator generators; sae 30 vs 10w30; 5w30 vs 10w30; 5w20 vs 5w30; by watt.



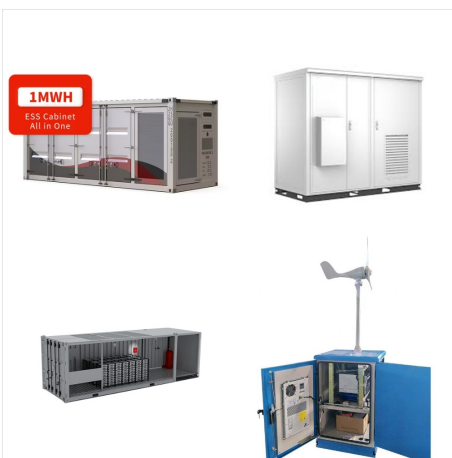
# A GENERAC GENERATOR FOR POWERING A 2000 SQ FT HOUSE



Suitable Size Generator for a 1,500 Sq Ft House. There are different types of generators you can use in your house. They include: inverter, portable, and standby. Inverter Generators for 1,500 Square Foot House. Inverter generators are ideal for 1,500 sq ft houses as they produce ample power to run most small to large appliances.



With a whole house generator the inconvenience of a power outage is almost non-existent. I wish I could of found a diesel generator for under \$2,000. Those suckers are efficient as hell. most people only use 3000 to 5000 if they have gas appliances. I have a 4500 square-foot house gas and electric, only use 6000kw peak per hour



As the #1 selling home standby generator brand, Generac's Guardian Series generators provide the automatic backup power you need to protect your home and family during a power outage. Every Guardian Series generator comes with Free Mobile Link Connectivity, allowing you to monitor the status of your generator on a phone, tablet or computer from

# A GENERAC GENERATOR FOR POWERING A 2000 SQ FT HOUSE



Considering a backup generator for your home is a smart move as it brings peace of mind during power outages. Now, the key question is: What's the right generator size for your 2000 sq ft house? Sizing a home generator is a bit tricky; it depends on your home's size and which appliances you want to keep running when the power goes out.