

How are the South Sandwich Islands managed?

The South Sandwich Islands, actively volcanic, consist of a 390-km-long chain of 11 main islands. Fisheries in the South Georgia Maritime Zone are managed using an ecosystem approach aiming to conserve the marine environment. Key Words: sub-Antarctic, South Georgia, South Sandwich Islands, conservation, management, fisheries, tourism.

Is South Georgia a small island?

It is a remote and inhospitable collection of islands, consisting of South Georgia and a chain of smaller islands known as the South Sandwich Islands. South Georgia is 165 kilometres (103 mi) long and 35 kilometres (22 mi) wide and is by far the largest island in the territory.

Should the South Georgia & South Sandwich Islands have a no-take marine area?

Scientists and governments are calling for large no-take marine areas, free from industrial exploitation. The South Georgia and South Sandwich Islands Marine Protected Area is undergoing its second five-yearly review. Recovery of baleen whales coupled with climate change, means managers must be alert to alternative future ecosystem states.

What is the ccTLD for South Georgia and the South Sandwich Islands?

The Internet country code top-level domain (ccTLD) for South Georgia and the South Sandwich Islands is .gs. The parts of the islands that are not permanently covered in snow or ice are part of the Scotia Sea Islands tundra ecoregion.

Are South Georgia and the South Sandwich Islands mountainous?

South Georgia and the South Sandwich Islands are a collection of islands in the South Atlantic Ocean. Most of the islands, rising steeply from the sea, are rugged and mountainous. At higher elevations, the islands are permanently covered with ice and snow.

What is the future of South Georgia & the South Sandwich Islands?

The future management of South Georgia and the South Sandwich Islands For more than two centuries, exploitation of the wildlife of South Georgia and the South Sandwich Islands has provided revenue, albeit

A GRID SYSTEM SOUTH GEORGIA AND SOUTH SANDWICH ISLANDS



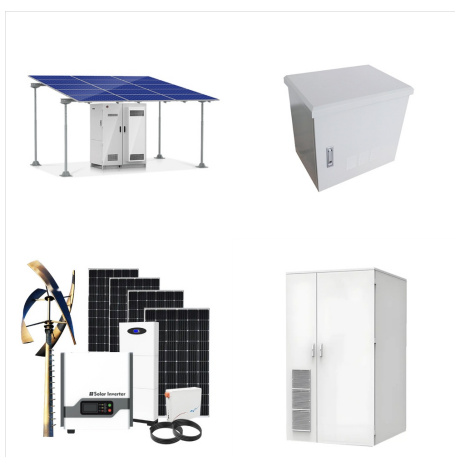
interrupted as serial overharvesting has destroyed stocks, in some instances taking species to the verge of extinction (see Introduction).



The South Georgia Geographic Information System (SGGIS) enables researchers and the public to access spatially explicit information about the islands' environmental landscape. The Government of South Georgia & the South ???



GSGSSI would like to congratulate Tristan da Cunha on the establishment of their new Marine Protection Zone. With the establishment of this protected area, Tristan da Cunha joins South Georgia & the South Sandwich Islands and other UK Overseas Territories, including Ascension, St Helena, Pitcairn and the British Indian Ocean Territory, in making a lasting commitment to ???



The territory of South Georgia and the South Sandwich Islands was formed in 1985. Argentina raised a territorial claim for South Georgia in 1927 and for the South Sandwich Islands in 1938. Argentina maintained a naval station, Corbeta Uruguay on Thule Island in the South Sandwich Islands from 1976 until 1982 when it was closed by the Royal Navy

A GRID SYSTEM SOUTH GEORGIA AND SOUTH SANDWICH ISLANDS



The flag for the South Georgia & South Sandwich Islands, which may show as the letters G and S on some platforms. Check out the NRSPPlus Point of Sale (POS) system, and low-rate NRSPay credit card processing from our partner, National Retail Solutions (NRS).



Closeup map of the South Sandwich Islands NASA satellite photograph of Montagu Island. The South Sandwich Islands comprise 11 mostly volcanic islands (excluding tiny satellite islands and offshore rocks), with some active volcanoes. They form an island arc running north-south in the region 56°18'S, 26°23'S, 28°08'W, between about 350 and 500 mi (300 and 430 nmi; ???



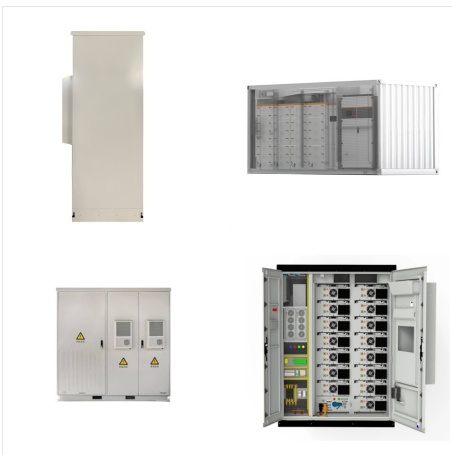
A GRID SYSTEM SOUTH GEORGIA AND SOUTH SANDWICH ISLANDS



Humpback whales (*Megaptera novaeangliae*) are showing strong recovery from commercial whaling in the western South Atlantic this region, humpback whales migrate annually from their winter breeding grounds off the coast of Brazil to their summer feeding grounds near to the Polar Front, an area that includes the waters of South Georgia and the ???



South Georgia & the South Sandwich Islands is at the northern limit of the krill distribution. Krill at South Georgia & the South Sandwich Islands are not self-sustaining but dependent on the northerly movement of krill in the currents of the Southern Ocean from their spawning grounds under the ice in the Antarctic Peninsula and Weddell Sea.



Our film "South Georgia ??? A Visitor's Guide" is compulsory viewing for all visitors to South Georgia. Its aim is to inspire visitors to respect and protect the island and its wildlife during their visit. Narrated by Sir David Attenborough, and produced by leading wildlife film-makers Silverback Films, the story showcases the incredible story of South Georgia's ecological recovery

A GRID SYSTEM SOUTH GEORGIA AND SOUTH SANDWICH ISLANDS



Perched like small dots in the middle of the South Atlantic Ocean between South America, Africa, and the continent of Antarctica, South Georgia and the South Sandwich Islands have limited territory and a tiny population. ???



The strategy has also been developed in conjunction with the Government of South Georgia and the South Sandwich Islands, who will also publish, on their website, their own complementary 5-year



Can you complete the fact file for the South Georgia and South Sandwich Islands? By Manicgamer04. 3m. 10 Questions. 40 Plays 40 Plays 40 Plays. Comments. Comments. Give Quiz Kudos. Give Quiz Kudos-- Ratings. PLAY QUIZ Score. Numerical. Percentage. 0/10. Timer. Default Timer. Practice Mode. Quiz is untimed.

A GRID SYSTEM SOUTH GEORGIA AND SOUTH SANDWICH ISLANDS



British overseas territory in the Southern Atlantic Ocean. This page was last edited on 27 November 2024, at 11:44. All structured data from the main, Property, Lexeme, and EntitySchema namespaces is available under the Creative Commons CC0 License; text in the other namespaces is available under the Creative Commons Attribution-ShareAlike License; ???



South Georgia and The South Sandwich Islands : Stamps : Years List : Colnect. Buy, sell, trade and exchange collectibles easily with Colnect collectors community. Only Colnect automatically matches collectibles you want with collectables collectors offer for sale or swap. Colnect collectors club revolutionizes your collecting experience!



South Georgia and South Sandwich Islands are to become a Terrestrial Protected Area which would further protect the most diverse populations of seabirds and marine mammals on Earth, including 25% of the world's gentoo penguins. r/UpliftingNews. r/UpliftingNews.

A GRID SYSTEM SOUTH GEORGIA AND SOUTH SANDWICH ISLANDS



? 1/4 ?? 1/4 ? South Georgia and the South Sandwich Islands, SGSSI ? 1/4 ????? ,??? „3592 ???



One of the few markers of human life in South Georgia and the South Sandwich Islands is the Norwegian Lutheran church in Grytviken. This neo-Gothic structure was constructed by whalers, led by explorer Carl Anton Larsen, during 1912???1913. The church was consecrated on Christmas Day in 1913, and its graveyard has sixty-four graves, including



It covers 1,069,871.60 km² and it is managed by Government of South Georgia and South Sandwich Islands (GSGSSI) Management category info I a Strict Nature Reserve: Category Ia are strictly protected areas set aside to protect biodiversity and also possibly geological/geomorphical features, where human visitation, use and impacts are strictly

A GRID SYSTEM SOUTH GEORGIA AND SOUTH SANDWICH ISLANDS



The map covers the area of the South Sandwich subduction system situated in the East Scotia Sea (Fig. 1), in the South Atlantic, between ca. 55.1° and 61.9° S, and 24° and 32° W. Georgia and South Sandwich Islands UK Overseas Territory. resulting grid was then checked for errors such as spikes and holes. Where identified, these were



The South Georgia and South Sandwich Islands MPA (hereafter, SGSSI MPA) 4 covers the entirety of the Maritime Zone, extending to 200 nm. The MPA is one of the world's largest, covering an area of 1.24 million km². It was established with the aim of conserving the rich marine biodiversity and for providing a framework for marine environmental



The South Sandwich Islands (SSI) are an intra-oceanic island arc of eleven small, actively volcanic islands and associated seamounts (Leat et al., 2013 (Leat et al.,, 2016 situated in the

A GRID SYSTEM SOUTH GEORGIA AND SOUTH SANDWICH ISLANDS



The spatial distribution of population in 2020, South Georgia and the South Sandwich Islands Estimated total number of people per grid-cell. The dataset is available to download in Geotiff format at a resolution of 3 arc (approximately 100m at the equator).



Frequently asked questions. Want to know about travelling to South Georgia and the South Sandwich Islands? We have put together a list of the most frequently asked questions from our users such as: What is the cheapest mode of transport?, What is the quickest option?, How much do tickets usually cost? and many more.



Summary. Welcome to our South Georgia & Antarctic Odyssey featuring the South Sandwich Islands expedition.. On this epic voyage, not only will you explore the famed white continent, discover the Falklands~Malvinas, encounter the wildlife haven in South Georgia, you will also sail to the South Sandwich Islands, a chain of seldom-visited volcanic islands located 740 km (460 ???

A GRID SYSTEM SOUTH GEORGIA AND SOUTH SANDWICH ISLANDS



Find islands for sale in South Georgia including private islands, small island homes, and large luxury islands. You can buy the island property of your dreams. There are currently 16 islands for sale in South Georgia, with an average listing price of \$333,275. The average cost to buy is \$83,580 per acre. Browse land for sale in South Georgia



The South Georgia and South Sandwich Islands Marine Protected Area (SGSSI-MPA) is one of the world's largest MPAs, covering an area of 1.24 million km² (an area 5 x larger than the UK). It was established in 2012 with the aim of conserving the rich marine biodiversity within the Territory's maritime zone and provides a framework for our