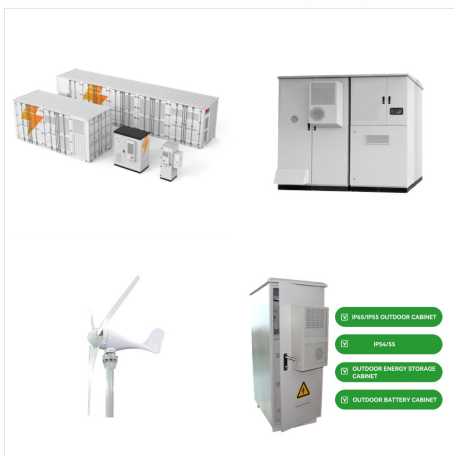




There are five energy-use sectors, and the amounts???in quadrillion Btu (or quads)???of their primary energy consumption in 2023 were: 1; electric power 32.11 quads; transportation 27.94 quads; industrial 22.56 quads; residential 6.33 quads; commercial 4.65 quads; In 2023, the electric power sector accounted for about 96% of total U.S. utility-scale ???



Renewable energy comes from unlimited, naturally replenished resources, such as the sun, tides, and wind. Renewable energy can be used for electricity generation, space and water heating and cooling, and transportation. Non-renewable energy, in contrast, comes from finite sources, such as coal, natural gas, and oil.



There are three main categories of energy sources: fossil fuel, alternative, and renewable. Renewable is sometimes, but not always, included under alternative. Fossil Fuels: Petroleum, Coal, and Natural Gas. Fossil fuels formed over millions of years ago as dead plants and animals were subjected to extreme heat and pressure in the earth's crust.

# A NON RENEWABLE SOURCE OF ENERGY IS



Fossil fuels are the dirtiest and most dangerous energy sources, while nuclear and modern renewable energy sources are vastly safer and cleaner. (2016) is that its database search was limited to English reports or non-English reports that had been translated. Some of these comparisons could therefore be a slight over- or underestimate. It

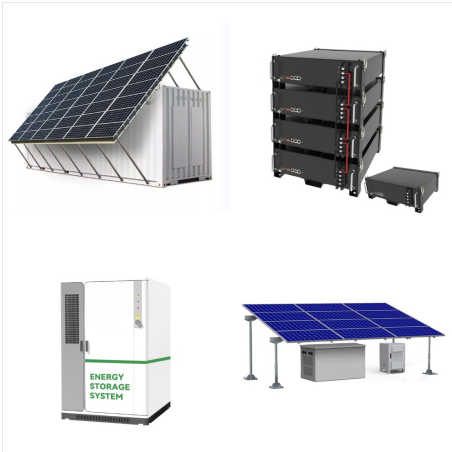


The call to use renewable resources, especially as energy sources, is becoming more common. That's because our dependence on and consumption of nonrenewable resources is causing a rapid decline in



Energy sources are categorized into renewable and nonrenewable types. Nonrenewable energy sources are those that exist in a fixed amount and involve energy transformation that cannot be easily replaced. Renewable energy ???

# A NON RENEWABLE SOURCE OF ENERGY IS



In contrast, renewable energy sources accounted for nearly 20 percent of global energy consumption at the beginning of the 21st century, largely from traditional uses of biomass such as wood for heating and cooking 2015 about 16 percent of the world's total electricity came from large hydroelectric power plants, whereas other types of renewable energy (such ???



Fossil energy sources, including oil, coal and natural gas, are non-renewable resources that formed when prehistoric plants and animals died and were gradually buried by layers of rock.Over millions of years, different types of fossil fuels formed -- depending on what combination of organic matter was present, how long it was buried and what temperature and pressure conditions ???



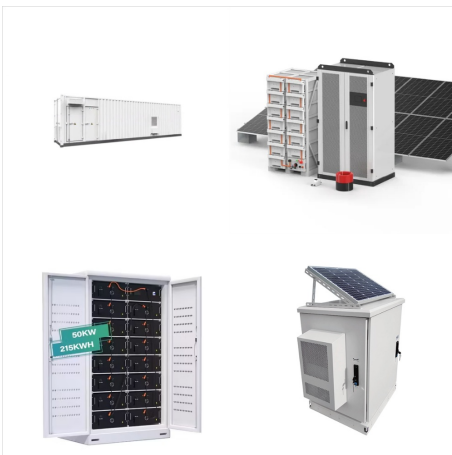
On the other hand, renewable energy sources such as solar and wind are replenished naturally.

Nonrenewable Basics. The four major nonrenewable energy sources are. Crude oil (petroleum) Natural gas; Coal; Uranium (nuclear energy) Nonrenewable energy sources come out of the ground as liquids, gases, and solids. We use crude oil to make liquid

# A NON RENEWABLE SOURCE OF ENERGY IS



The production of nuclear fuel is what makes it an example of a non-renewable resource. (Foto: CC0 / Pixabay / distelAPPArath) While nuclear energy itself is considered a renewable energy source, the process of harvesting nuclear energy is what makes nuclear fuels non-renewable. Nuclear energy is released by splitting the nucleus of an atom, in a process ???



A lot of our energy comes from non-renewable sources such as coal, oil and gas. These resources are made up from the remains of ancient animals and plants that develop over millions and millions



Biomass was the primary source of U.S. energy consumption until the mid-1800s when the industrial revolution saw the introduction of non-renewable energy sources. However, many countries still use biomass energy as a leading fuel source, particularly where cooking and heating are concerned.



# A NON RENEWABLE SOURCE OF ENERGY IS



Non-renewable energy sources are slowly vanishing from the earth because they are formed over billions of years. 3. Since some non-renewable sources emit carbon monoxide, like fossil fuels, it means that non-renewable energy causes pollution and also, they can cause respiratory problems in humans. Sources like coal, oil and natural gas are



Knowing whether a source of energy is renewable or non-renewable is important when considering energy and/or sustainability. Renewable energy is defined by the U.S. Environmental Protection Agency thus: "Renewable energy includes resources that rely on fuel sources that restore themselves over short periods of time and do not diminish" (Source: U.S. EPA).



The availability of energy has transformed the course of humanity over the last few centuries. Not only have new sources of energy been unlocked ??? first fossil fuels, followed by diversification to nuclear, hydropower, and now other renewable technologies ??? but also in the quantity we can produce and consume.

# A NON RENEWABLE SOURCE OF ENERGY IS

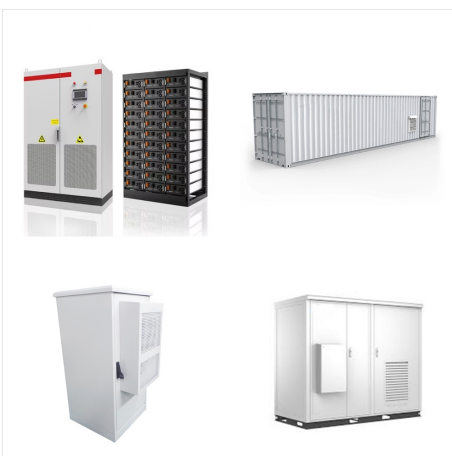


Non-renewable energy resources cannot be replaced ??? once they are used up, they will not be restored (or not for millions of years).

Non-renewable energy resources include fossil fuels and nuclear power.. Fossil fuels. Fossil fuels (coal, oil and natural gas) were formed from animals and plants that lived hundreds of millions of years ago (before the time of the dinosaurs).

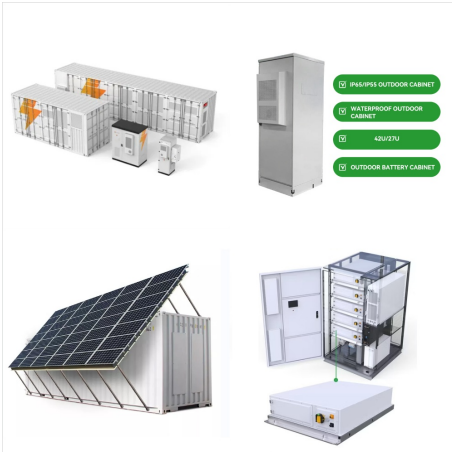


A coal mine in Wyoming, United States. Coal, produced over millions of years, is a finite and non-renewable resource on a human time scale.. A non-renewable resource (also called a finite resource) is a natural resource that cannot be readily replaced by natural means at a pace quick enough to keep up with consumption. [1] An example is carbon-based fossil fuels.



Some non-renewable sources of energy, such as nuclear power, [contradictory] generate almost no emissions, while some renewable energy sources can be very carbon-intensive, such as the burning of biomass if it is not offset by planting new plants. [12]

# A NON RENEWABLE SOURCE OF ENERGY IS



Let's solve some problems to better understand alternative sources of energy. Skip to main content. If you're seeing this message, it means we're having trouble loading external resources on our website. Renewable and non-renewable sources of energy. Using solar energy ; Energy conservation in daily life. Science > UP Class 8th Science >



Figure (PageIndex{3}): U.S. Natural Gas Supply, 1990-2035 Graph shows U.S. historic and projected natural gas production from various sources. Source: U.S. Energy Information Administration Natural gas is a preferred energy source when considering its ???



The sun is the main source of energy on Earth. Other energy sources include coal, geothermal energy, wind energy, biomass, petrol, nuclear energy, and many more. Energy is classified into various types based on sustainability as renewable sources of energy and non-renewable sources of ???

# A NON RENEWABLE SOURCE OF ENERGY IS



Non-renewable energy has a comparatively higher carbon footprint and carbon emissions. Cost: The upfront cost of renewable energy is high. For instance, generating electricity using technologies running on renewable energy is costlier than generating it with fossil fuels. Non-renewable energy has a comparatively lower upfront cost.