

What is the US power elite?

In a pathbreaking book, Mills (1956) claims that the US power elite consists of elite members of society characterized by consensus building and the homogenization of viewpoints. This power elite has historically dominated the three major sectors of US society: economy, government, and military.

What is the power elite theory?

Perhaps the most famous elite theory is the power-elite theory of C. Wright Mills (1956). According to Mills, the power elite is composed of government, big business, and the military, which together constitute a ruling class that controls society and works for its own interests, not for the interests of the citizenry.

What is the power elite about?

In *The Power Elite*, Mills is picking up a project that came before him. The Frankfurt School is a collection of intellectuals who are writing during the Nazi takeover of Europe, and many of them are in exile.

What is Mills' theory of the power elite?

Mills' theory of the "power elite" centers around the idea that elites are products of the distinct institutions within which they arise, whether it be the military, politics, or business.

Is the power elite a good book?

The Power Elite is a wonderful, beautiful, caustically written analysis of the institutional power structures in the United States in the post-war era. It's also a cultural analysis of the role of the media and celebrities legitimizing this fundamentally unequal system during that period. He's a wonderful writer, and the book really holds up.

How do elites influence policy making Despite democratic elections?

A landmark work in this tradition is G. William Domhoff's detailed account of how elites (working through foundations, think-tanks, and an "opinion-shaping apparatus," as well as through the lobbyists and politicians they finance) may dominate key issues in U.S. policy making despite the existence of democratic elections.

A POWER-ELITE MODEL OF THE U S POLITICAL SYSTEM SUGGESTS THAT



Pluralism is a theory that centers on the idea of how power is distributed. The pluralist model indicates that power is distributed among many groups. These groups may include coalitions of like

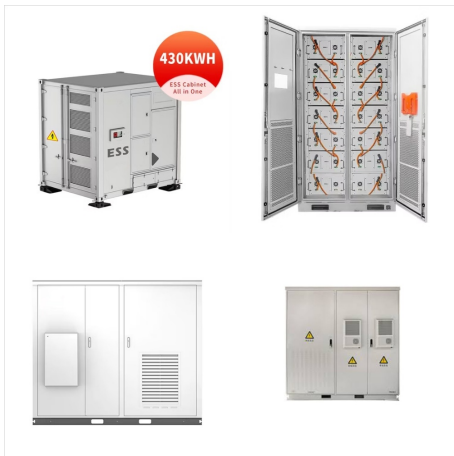


These entities form part of the contemporary Power Elite, along with political and military leaders. Moreover, globalization has interconnected nations and economies in ways that demand ongoing analysis of power dynamics. The Power Elite theory helps us understand how global forces and international actors influence domestic policies and decisions.



Mills rejects pluralist assertions that various centers of power serve as checks and balances on one another ??? the power-elite model suggests that those at the top encounter no real opposition and it implies a concentration of power, wealth, and prestige in the hands of the wealthy and powerful in American society.

A POWER-ELITE MODEL OF THE U S POLITICAL SYSTEM SUGGESTS THAT



Over the years, political analysts have tended to split over how the American political system operates. This split involves three theoretical systems: pluralism, hyper-pluralism, and the power elite. The disagreements center around which ???



The Power Elite is a 1956 book by sociologist C. Wright Mills, in which Mills calls attention to the interwoven interests of the leaders of the military, corporate, and political elements of the American society and suggests that the ordinary citizen in modern times is a relatively powerless subject of manipulation by those three entities.



Pluralist Theory: A Functionalist Perspective. Recall (from Chapter 1 "Sociology and the Sociological Perspective") that the smooth running of society is a central concern of functionalist theory. When applied to the issue of political power, functionalist theory takes the form of pluralist theory, which says that political power in the United States and other democracies is dispersed ???

A POWER-ELITE MODEL OF THE U S POLITICAL SYSTEM SUGGESTS THAT



Any account of C. Wright Mills's *The Power Elite* (2000a [1956]), needs to avoid two traps: discussing it as a conspiracy theory or as author (Horowitz 1983). This work is one of the most radical critiques of the foundations of US liberal democracy. To this end, Mills takes up the dilemma that Raymond Aron suggests can be found in elite theory: "the theory of divided ???"



This open access book describes how elite studies theoretically and methodologically construct their object, i.e. how particular conceptualizations of elites are turned into research practice



Question: 28. A power-elite approach to the U.S. political system suggest that: a. power is concentrated in the hands of a few. b. an anti-democratic bias exists in the capitalist system. C. power is widely dispersed throughout society. d. many people do not vote because they are alienated from the political system.

A POWER-ELITE MODEL OF THE U S POLITICAL SYSTEM SUGGESTS THAT



T/F, A pluralist approach to the U.S. political system suggests that _____ and more. Study with Quizlet and memorize flashcards containing terms like A conglomerate is _____, A corporation is an organization with a legal existence apart from that of its members. A power-elite model of the U.S. political system suggests that _____ power is



Although conspiratorial in its nature, according to the power elite theory, this disproportionate influence in the hands of the few, directly contributes to the unequal distribution of power in societies. Mills (1956) writes:

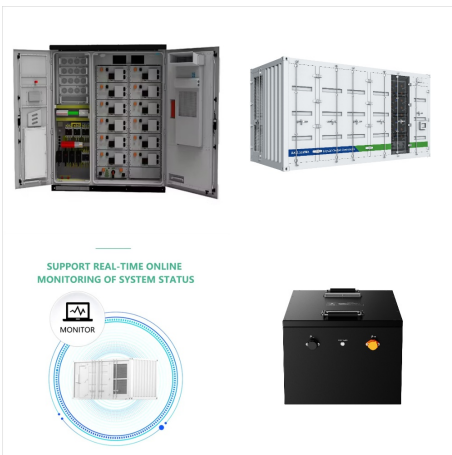


Major economic power in the United States is concentrated in an organizational and legal form known as the corporation, and has been since the last several decades of the 19th century. through which members of the power elite influence electoral campaigns by means of campaign donations to political candidates. Power elite domination of the

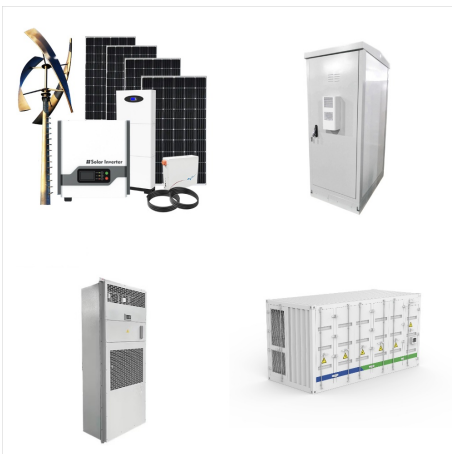
A POWER-ELITE MODEL OF THE U S POLITICAL SYSTEM SUGGESTS THAT



But others saw problems in the elite nature of U.S. politics. Political sociologist C. Wright Mills worried about the revolving door between the government and large corporations, as political and



Multivariate analysis indicates that economic elites and organized groups representing business interests have substantial independent impacts on U.S. government policy, while average ???

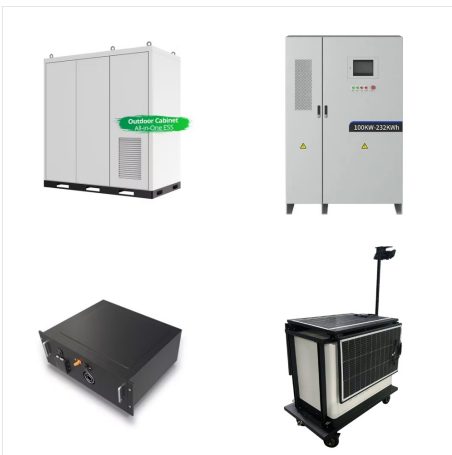


Origins of Power Elite Theory. The theory was popularized by sociologist, C. Wright Mills (1916-1962), through his publication work, The Power Elite, a book released in 1956. The book argued that the elite had disproportionate influence over the decision-making processes in the United States and by default in the world.

A POWER-ELITE MODEL OF THE U S POLITICAL SYSTEM SUGGESTS THAT



The Power Elite is a wonderful, beautiful, caustically written analysis of the institutional power structures in the United States in the post-war era. It's also a cultural analysis of the role of the media and celebrities ???



According to C. Wright Mills, among the best known power-elite theorists, the governing elite in the United States draws its members from three areas: (1) the highest political leaders including the president and a handful of key cabinet members and close advisers; (2) major corporate owners and directors; and (3) high-ranking military officers.



Mills rejects pluralist assertions that various centers of power serve as checks and balances on one another ??? the power???elite model suggests that those at the top encounter no real opposition and it implies a concentration of power, wealth, and prestige in the hands of the wealthy and powerful in American society.

A POWER-ELITE MODEL OF THE U S POLITICAL SYSTEM SUGGESTS THAT



Perhaps the most famous elite theory is the power-elite theory of C. Wright Mills (1956). According to Mills, the power elite is composed of government, big business, and the military, which together constitute a ruling class that controls society and works for its own interests, not for the interests of the citizenry.



Study with Quizlet and memorize flashcards containing terms like A power-elite model of the U.S. political system suggests that _____, A totalitarian political system _____, As a social institution, the economy _____ and more.



A power-elite model of the U.S politics system suggests that _____ Power is concentrated in the hands of a few The Marxist political-economy model suggests that _____ an anti-democratic bias exists in the capitalist system. About us. About Quizlet; How Quizlet works; Careers; Advertise with us; Get the app; For students.

A POWER-ELITE MODEL OF THE U S POLITICAL SYSTEM SUGGESTS THAT



Like any group of people, the elite encompasses upstanding, exemplary individuals as well as those whose motives are less than admirable. They act like all other people act: in their own self-interest. The question for a political system is whether concentrations of economic and political power can coexist with democracy.



One common point between the elite and pluralist perspective is that power is unequally distributed within the U.S. political system. Robert Dahl's model of political power in the U.S. suggests there is a three-level power structure: corporate, executive, and military elites; local opinion leaders; and the unorganized, exploited masses at



The Marxist political-economy model suggests that (a) power is concentrated in the hands of a small "power elite" (b) an antidemocratic bias is built into the capitalist system (c) power is spread widely throughout society (d) many people do not vote because they are basically satisfied with their lives

A POWER-ELITE MODEL OF THE U S POLITICAL SYSTEM SUGGESTS THAT



A power-elite model of the U.S. political system suggests that _____ power is concentrated in the hands of a few. In the United States, _____ people tend to vote Democratic, while _____ people mostly vote Republican.



Comparing the dynamics of the American political system today with that of Mills' era might lead one to conclude that Mills' theory of the "power elite" does not hold value as a model for understanding contemporary society, as Mizuchi does (Mizuchi, 113).



A power-elite model of the U.S. political system suggests that _____ power is concentrated in the hands of a few. power is widely dispersed throughout society. an anti-democratic bias exists in the capitalist system. many people do not vote because ???

A POWER-ELITE MODEL OF THE U S POLITICAL SYSTEM SUGGESTS THAT



The pluralist model of power relations in the United States suggests that power is held by many competing groups that have access to government, so that no single group is dominant. Which model of power relations suggests that society is ruled by a small group of individuals who share a common set of political and economic interests?