

Where is the power steering fluid reservoir on an Acura MDX?

In the Acura MDX, the power steering fluid reservoir is typically located near the front of the engine bay. It is often labelled with a steering wheel icon. If you need help locating the reservoir, consult your owner's manual. Remove as much of the old power steering fluid from the reservoir using a turkey baster or a fluid suction pump.

Do you offer genuine Acura MDX power steering hoses?

We offer genuine Acura MDX power steering hoses, engineered specifically to restore factory performance. Please narrow the Power Steering Hose results by selecting the vehicle.

Does the Acura RDX have power steering fluid?

Changing the power steering fluid is important maintenance. Keep the power steering pump working properly by following these simple step-by-step instructions. This article applies to the Acura RDX (2007-2012). Power steering fluid is a neglected but necessary maintenance item that doesn't get much thought until something goes wrong.



26 problems related to electrical system have been reported for the 2017 Acura MDX. The most recently reported issues are listed below. The most recently reported issues are listed below. Please also check out the statistics and reliability analysis of the 2017 Acura MDX based on all problems reported for the 2017 MDX.

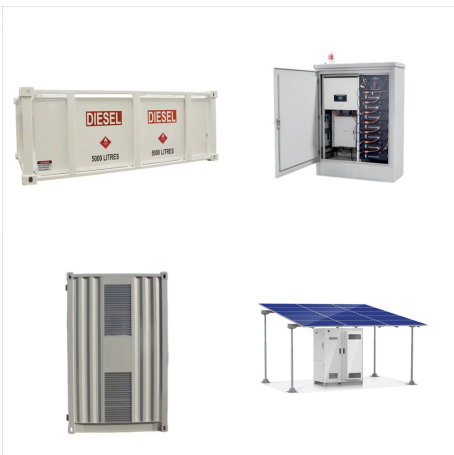
# ACURA MDX POWER STEERING SYSTEM PROBLEM



The power steering pump on the MDX is growling. The car is coming up on 100,000 miles. Check the two videos above and see if they sound like ur problem. IF it is air in ur system, you should try to find the leak first. My leak was right by the oring hose where it attaches to the pump. Acura MDX SUV Forums. 744.3K posts 90.4K members



It has been awhile since I have posted. Daughter is now driving our 2006 MDX with over 300,000 kms on it. Ran into some power steering issues recently. Started with a small leak, like dollar coin sized drops on the driveway. No noise from power steering pump. Took it to local mechanic who said, power steering pump needs replacement.



The power steering on my 2008 MDX has started groaning and not working well, especially on cold mornings. I first tried replacing the fluid and the o-rings but the problem persisted. I bought my replacement unit at Autozone for around \$180 three years and 68,000 miles ago. Acura MDX SUV Forums. 744.3K posts 90.4K members Since 2000

# ACURA MDX POWER STEERING SYSTEM PROBLEM



1) all-wheel drive problem, only front wheel function  
 2) power-drive problem 3) lane-keeping assist problem 4) collision-mitigation braking problem 5) road-departure mitigation system problem 6) "STOP" driving as soon as safe 7) see your dealer I felt the steering harden, but at that speed it was manageable to steer.



On 01/18/2020. I can not start my 2015 Acura MDX anymore when I was on the walmart parking lot, power steering system ( eps) problem " light was on, the steering wheel was locked up. The car has 61,035 miles. - Westminster, CO, USA. Add Complaint. problem # 6. Jan 01 2019. MDX. Our 2015 Acura MDX has been at the dealership 8 times. Our



hey guys i have a 07 mdx with right at 60,000 miles on it. im getting a very loud whine coming from the power steering when i turn. it doesnt happen when the car is first started but a few mins after driving i hear it. what weird is sometimes ill drive it and it doesnt happen at all but then others time it does. it seems to have gotten worse with the weather getting colder.

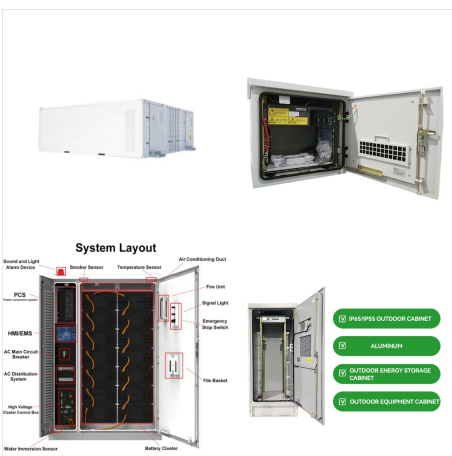
# ACURA MDX POWER STEERING SYSTEM PROBLEM



**BRAKE SYSTEM** Brake system problem. Brake performance may be reduced. Acura MDX SUV Forums. 744.3K posts 90.4K members Since 2000 Acura MDXers Forum - a community where enthusiasts discuss engines, tires, service and everything you need to know about the MDX! Show Less . Full Forum Listing. Explore Our Forums



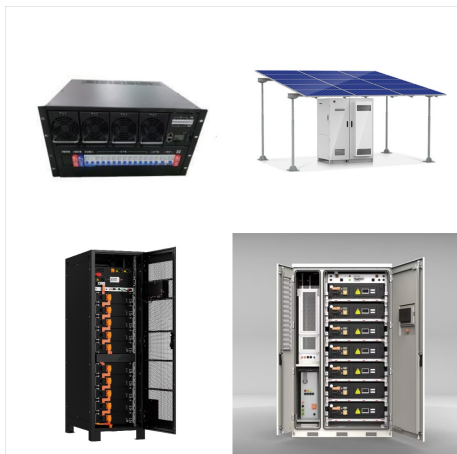
If your Acura MDX's steering wheel is hard to turn, it's almost always going to be caused by an issue with the power steering system. But there can be other causes as well. Your vehicle's power steering system is responsible for taking energy from the engine, converting it to hydraulic pressure, and using that pressure



Brake problem Abs problem power-drive problem lane-keeping assist problem collision-mitigation braking problem Road-departure mitigation system problem see your dealer Damn. Acura I bought the car from a dealer which is 100 miles from my home. Not sure if I can take this to dealer near my house.



# ACURA MDX POWER STEERING SYSTEM PROBLEM



Acura MDX (Graphite Luster) - SH-AWD, Advance  
2016 Volvo XC90 R-Design (Passion Red) -  
Polestar, Convenience, 4C Air Suspension, Bowers  
& Wilkins, CarPlay Emission System Problem  
Power Steering System Problem Vehicle Stability  
System Problem Hill Start Assist Problem



I think those systems use the camera in the housing  
above the rear view mirror. You could have  
something blocking the camera view, something on  
dash reflecting off the windshield, or camera having  
intermittent failures like overheating sitting in the  
sun before the cabin can cool down once you start  
driving. Acura MDX SUV Forums. 744.3K

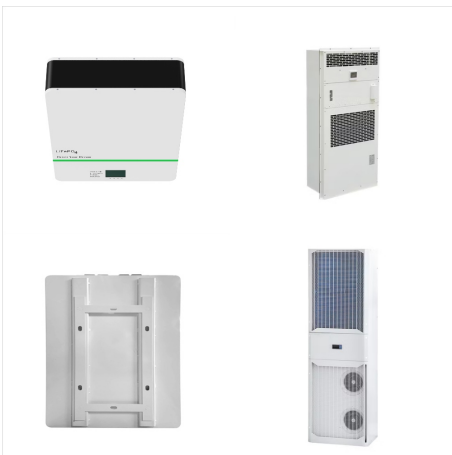


At slow speed our brand new vehicle with only 800  
miles the electric power steering system failed  
causing difficulty manually steering the vehicle and  
pulling off the roadway. In addition every warning  
light illuminated on dashboard. Internet searches  
have revealed several other owners with the 2022  
Acura MDX and the same vehicle problems

# ACURA MDX POWER STEERING SYSTEM PROBLEM



One problem with the second generation of the Acura MDX is that owners have numerous complaints about the electrical system. These malfunctions come in all shapes and sizes. However, common complaints are the key fob and/or electrical windows not working, the random illumination of warning lights, loss of GPS, and complete loss of power.



Power Steering failed, all systems down. Jump to Latest 21 - 40 of 126 Posts. 1 2 of Acura's reaction to the problem is just unacceptable. Some failures will happen in any vehicle model, "luxury" or "expensive" or not but it's one thing for there to be a failure, annoying but just part of the reality, but Acura's unwillingness to provide a

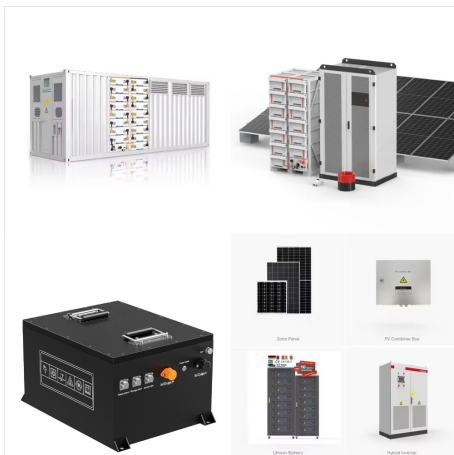


Acura MDX has 30 NHTSA complaints for the steering at 32,288 miles average. Add your complaint? Back; Crash Tests 2; MDX Recalls 6; TSBs 391; Lemon Law; Acura >> MDX >> 2014 Power steering (eps) system problem. Is a message being displayed on the car dashboard. The car will not start. This is the second time in 2 years where we had

# ACURA MDX POWER STEERING SYSTEM PROBLEM



Knowing these patterns helps you figure out which Acura MDX years to avoid. Power Steering Failures. In the 2003 Acura MDX, power steering problems were a big issue, raising doubts about the car's reliability and safety. Owners reported troubles with the power steering system, making this particular year a potential hazard.



Read expert Acura MDX steering and suspension problem guides and repair how to's with photos and videos to help you maintain your car. Acura MDX Steering & Suspension Guides How to Change Power Steering Fluid . Need to change your power steering fluid? Active Damper System (ADS) Diagnosis and Repair

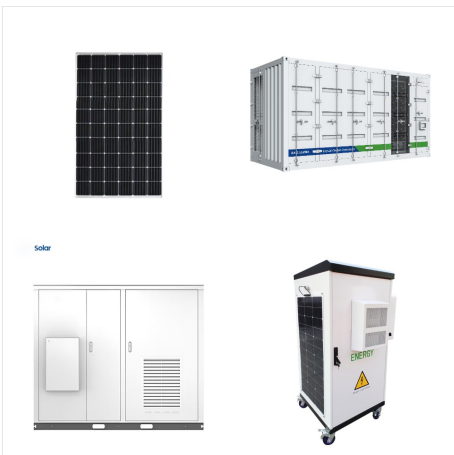


If you are working on an '01???03 MDX that came in for a noisy power steering pump, first check to see if the reservoir filter is clogged. If the filter is clogged, the power steering fluid pump cavitates and makes noise. Before replacing a power steering pump for noise, replace the power steering fluid reservoir and the fluid.

# ACURA MDX POWER STEERING SYSTEM PROBLEM



Power steering control modules can fail causing a number of symptoms, including, but not limited to, power steering and other warning light illumination, steering wheel becoming stiff or nearly impossible to turn, speed sensitivity is no longer accurate, turning radius may seem to increase or decrease, an excessive number of turns of the steering wheel may be necessary to turn the ???



emission system problem power steering problem lane departure problem hill start assist problem The problem started happening after about 2 years. It was not so bad in the beginning and would only happen once in a few months and would go away after restart.



Reading online about the SH-AWD System Problem and in general there are quite a few people reporting they've had issues with a variety of System Problem warnings pop up, Emissions and SH-AWD are just 2 of many examples. or were due to power/electrical issues (loose ground, low/bad battery, bad alternator, relay causing power drain, etc



# ACURA MDX POWER STEERING SYSTEM PROBLEM



I have a 2022 MDX AWD with 25k miles and had two message lights come on. First was the AWD System Problem. The second was the Emissions System Problem power may be reduced. Its been at the dealer for three days. First they said it could be one of two things. Bad gasoline or over filled tank.