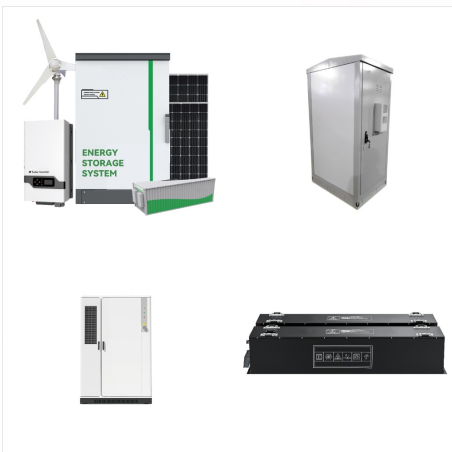




For example, shading one set of panels while the other is still able to produce power. Same idea as when you have hydro generator and solar panels or generator with an ac/dc charger while connected to solar panels, or as in your ???



How Do Solar Energy and Wind Energy Work?. Renewable energy is becoming more popular globally. About 76% of Americans believe that expanding renewable energy sources (such as wind turbines and solar panels) is a worthwhile objective. Solar and wind energy are the two most prevalent sources. Both leverage renewable, environmentally friendly energy sources.



Click the Tab Above ??? Planning Design & Installation Tips along with the Video Tab to Learn More. "Do I have a good home for solar energy and wind power system?" Consult Wind Resource Maps: Click on the planning, design and installation tips tab above where you will find a resource map link for wind and solar. Use these maps to determine how much wind and solar in your ???

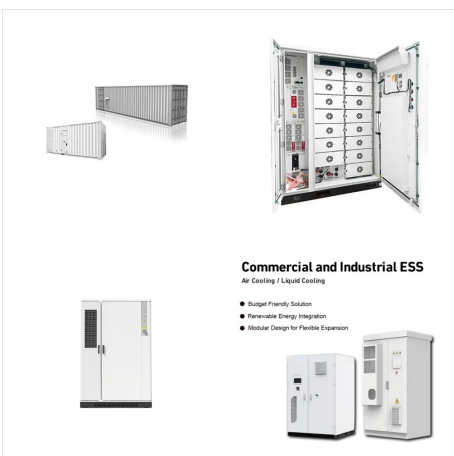
# ADD WIND TURBINE TO SOLAR PANELS



A wind turbine and solar panel combination helps you get the best performance from your setup. Our hybrid systems are designed to avoid the common pitfalls that can cause wind- or solar ???



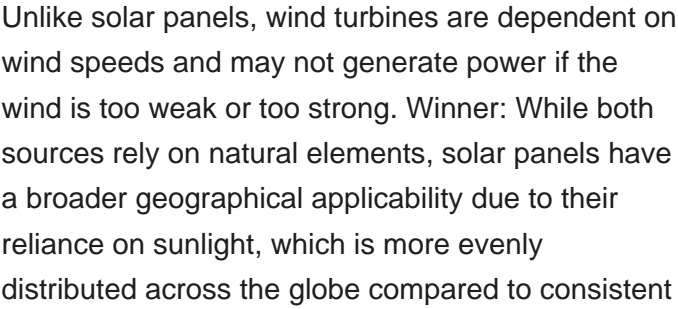
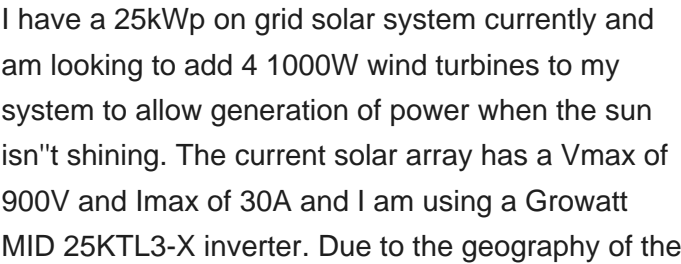
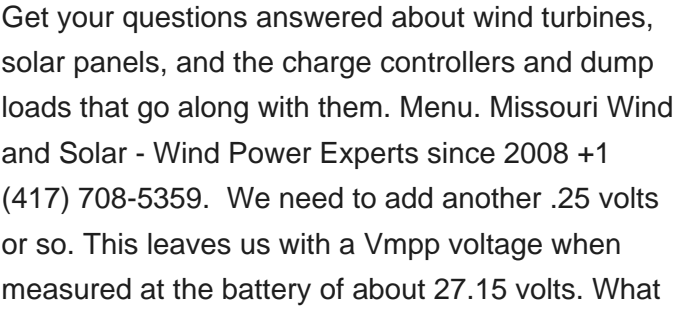
In most cases, solar panels are cheaper than wind turbines. Solar panels are usually cheaper to install as well as per kWh. In addition, solar panels typically cost less to upkeep and are less likely to break. As a homeowner, solar power will likely make more financial sense than wind power.



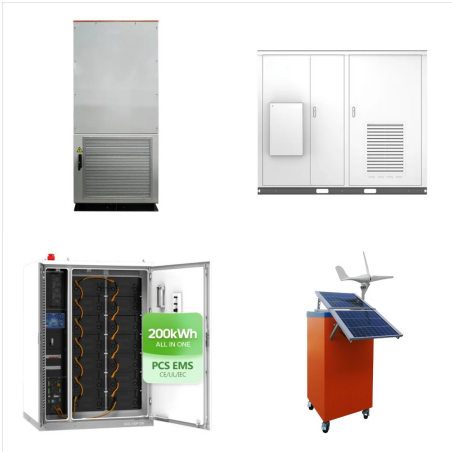
**Commercial and Industrial ESS**  
Air Cooling / Liquid Cooling

- Budget Friendly Solution
- Renewable Energy Integration
- Modular Design for Flexible Expansion

Whether you're working to keep your battery bank charged or just to maximize your power production compared to your consumption on a grid-tied system, going with a wind turbine and solar panel combination goes a long way to helping you achieve energy independence. It's also important to understand the difference between weather and climate.



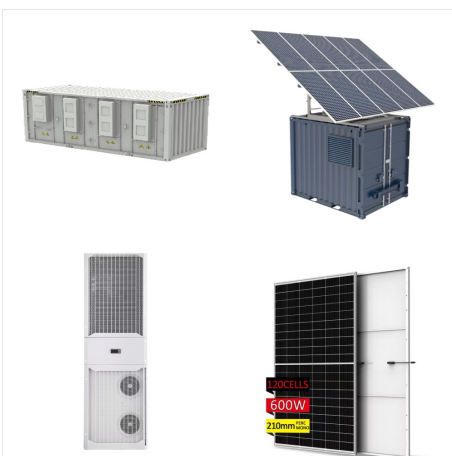
# ADD WIND TURBINE TO SOLAR PANELS



The initial investment for a wind turbine can be higher than that of solar panels, but wind turbines typically have a longer lifespan, lower maintenance costs, and higher energy production. Solar Energy: Solar panels ???



The reason that I want to add a wind turbine is we get very little solar in December and January. However the wind blows almost constantly. If we had a 1.5 KW turbine we could collect more in 24 hours then my 4KW solar does ???



4. Connect a wind generator to an off-grid solar power system . 1. Add a wind generator to an existing grid-connected solar power system. We do not supply direct 240-volt AC wind generators, however, you can: Replace your existing ???

# ADD WIND TURBINE TO SOLAR PANELS



Steps to connect solar and wind turbine together. Assess your energy needs to order solar panels or wind turbines; Wind turbines and solar panels should be close in wattage; Adding Wind turbine or Solar Panels to ???

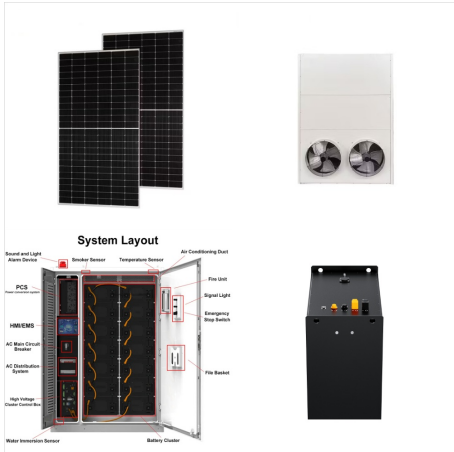


Pros and Cons of Hybrid Wind-Solar Energy Systems. The advantages of a hybrid wind-solar energy system include: #1 Consistent Power Supply. With a wind turbine, solar panels, and a bank of batteries, you'll be one of the few people in the world to have power 24/7, 365 days a ???



Solar panels and wind turbines have complementary generation patterns. Solar shines brightest during the day, perfectly aligning with peak household electricity demand. Conversely, wind can be stronger in the evenings and early mornings, filling the gaps when solar production dips. Adding wind power to your existing solar system involves

# ADD WIND TURBINE TO SOLAR PANELS



While wind turbines and solar panels are often discussed as separate entities, their strengths can be combined to create more comprehensive renewable energy systems. The synergies and integration possibilities between wind and solar power offer additional advantages and enhance overall energy generation.



According to many renewable energy experts, a small "hybrid" electric system that combines home wind electric and home solar electric (photovoltaic or PV) technologies offers several advantages over either single system.. In much of the United States, wind speeds are low in the summer when the sun shines brightest and longest.



This article explores how integrating wind power with existing solar systems can create a more reliable, robust, and sustainable energy mix. Learn the benefits and discover if this hybrid approach is right for you.

# ADD WIND TURBINE TO SOLAR PANELS



The initial investment for a wind turbine can be higher than that of solar panels, but wind turbines typically have a longer lifespan, lower maintenance costs, and higher energy production. Solar Energy: Solar panels have experienced a substantial reduction in cost, making them more affordable for consumers and businesses.



Compared to wind energy, solar panels are almost entirely quiet. At most, they emit a light buzz or murmur sound that is undetectable to most ears. You can easily scale things up by adding panels to your home at any time. Solar panels are arranged side-by-side, making it extremely easy to link in additional panels.

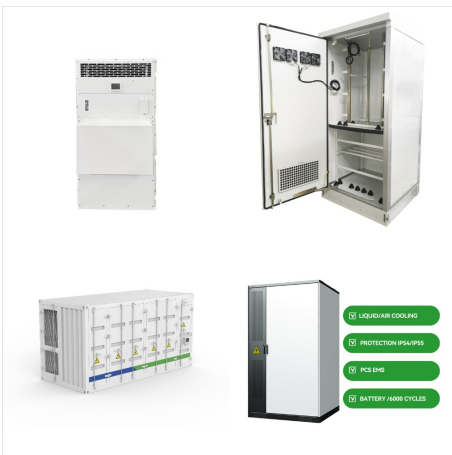


Wind turbines typically have a higher capacity factor than solar panels because wind energy is more consistent and less affected by daily weather changes than solar energy, which relies on how much UV light it can absorb.

# ADD WIND TURBINE TO SOLAR PANELS



Integrating wind turbine with solar panel provides energy reliability, as wind and solar power often complement each other regarding availability. Below are technical details explaining how a wind turbine and solar panel ???



The system's overall cost will include installing solar panels, wind turbines, storage batteries, and power control systems, but you'll also need to consider other variables like site preparation, permits, and maintenance. This can make providing an exact estimate difficult without a site inspection. Adding in the battery packs would



Also, the correct type of wind turbine will depend on your situation. So, consider your situation carefully when choosing a wind turbine. Consider your power requirements. If you are adding a wind turbine to your solar power system, it is because you need the extra power. So, it helps to know how much extra power you need.

# ADD WIND TURBINE TO SOLAR PANELS



Steps to connect solar and wind turbine together. Assess your energy needs to order solar panels or wind turbines; Wind turbines and solar panels should be close in wattage; Adding Wind turbine or Solar Panels to stand-alone systems must have power knowledge and skills; Always Connect the Battery First; Connect the solar panel to the all-in-one



This variability means that, unlike the more predictable output from solar panels, wind turbines can experience periods of reduced efficiency. Potential noise and aesthetic impacts: A residential wind turbine may produce noises that some may find intrusive. In addition, their presence can be visually dominant in a residential setting.