



smaller grid containing most of Texas. The three systems have weak ties between them to act as power transfers, but they largely rely on independent systems to remain stable and reliable. Along with aged assets, primarily from the 1960s and 1970s, the electric power system is



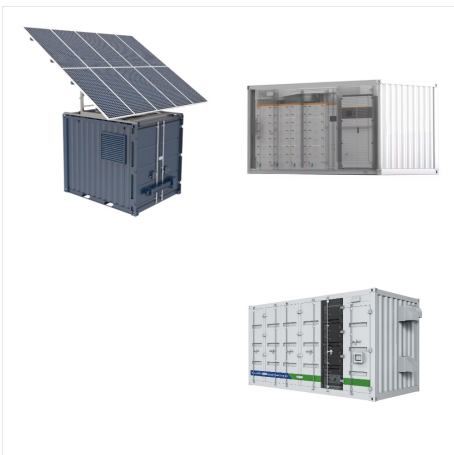
DENVER, Colo., May 7, 2024 ??? Advanced Energy Industries, Inc. (Nasdaq: AEIS) ??? a global leader in highly engineered, precision power conversion, measurement and control solutions ??? has added a fully water-cooled 60 kW option to its Ascent(R) Arc Management System??? (AMS) family of DC generators for the precise control of film quality and



AC-DC Power Supply Units Bulk Power Shelves and Systems; Front End PSUs AC-Input; Front End PSUs DC-Input; OCP Compliant Power Shelves; Configurable/Modular Industrial & Medical PSUs; Open Frame, Low Power AC-DC Power Supplies; Capacitor Chargers; Conduction Cooled IP Sealed Power Supplies; DIN Rail PSUs



In addition, system integration work has been carried out on the 100kW power level for grid connected energy storage products. His primary focus is on digital control loop design to meet the needs of safety and power quality compliance for grid-interactive inverters as well as advanced solar power control techniques.



AC-DC; DC-DC; VPX Systems; Vicor Power Systems. Custom Commercial; Custom Aerospace and Defense; Accessories; Power modules enable world's most advanced all-electric work-class ROV (eWROV) Article. (C)2024 Vicor Corporation



Pinnacle Plus+ generators deliver DC power in a pulsing configuration enabling reactive sputtering of extremely uniform, high-quality dielectric films. Pulsed and DC Power Systems; Remote Plasma Sources; RF Match Networks; RF Plasma Generators; Advanced Energy shapes and transforms how power is used, delivered and managed



First-rate customer service and technical support is a commitment we make daily to our customers. Our team of service experts is available globally to offer the right support to meet your requirements. Let us know what you need ??? on-site training, application consulting, or technical assistance ??? and we'll make sure you get it. With live chat and phone support, you can ???



AC-DC Power Supply Units Bulk Power Shelves and Systems; Front End PSUs AC-Input; Front End PSUs DC-Input; OCP Compliant Power Shelves; Configurable/Modular Industrial & Medical PSUs; Open Frame, Low Power AC-DC Power Supplies; Capacitor Chargers; Conduction Cooled IP Sealed Power Supplies; DIN Rail PSUs



The field-proven Pinnacle(R) DC generators deliver remarkable process consistency and control for significantly reduced variation and higher yields. This compact, versatile package offers outstanding arc management with low stored energy, fast arc response, and wide, full-power operational impedance range.



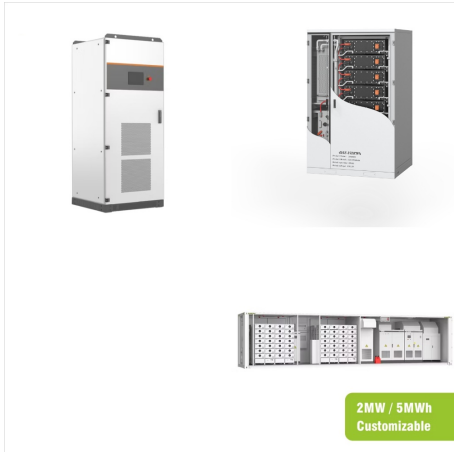
Advanced Energy's SL Power NGB250 medically-approved AC-DC power supplies are available with a nominal main output of 12 V, 15 V, 24 V, 28 V, 48 V or 56 V. NGB250 power supplies provide up to 250 W of output power with air flow.



Scott DC Power Products; Nidec Drive Systems is part of the global Nidec Corporation, a major manufacturer of electric motors, drives and controls, and has several locations in the United States, United Kingdom, Mexico and China. Nidec Drive Systems 4602 Emery Drive Fort Wayne, IN 46809 Phone: 260.247.9920 Fax: 260.747.9780. Nidec



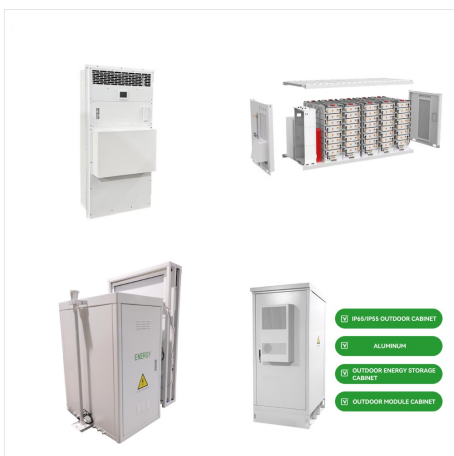
AC-DC Power Supply Units Pulsed and DC Power Systems; Remote Plasma Sources; RF Match Networks; RF Plasma Generators; Advanced Energy shapes and transforms how power is used, delivered and managed. Our long history of innovation and technology leadership, broad portfolio of proprietary products and global technical talent help solve our



SL Power Electronics and Advanced Energy will represent a strong strategic fit with complementary technologies, product portfolios and core competencies in highly engineered, application-specific power solutions for key OEMs in demanding mission-critical applications.



March 4th, 2022. TDK Corporation announces the introduction of the TDK-Lambda 30kW-60kW Advanced Programmable Rack DC Power Systems into the Programmable DC Power Supply Series. This power platform expands beyond the existing rack-mount product offering into markets that utilize high power stand-alone rack DC power systems that include Automotive, Industrial, ???



Rated output power (W) 6: 15: 20: 25: 40: Inner Rotor Low Rotor inertia High response: Palm mini PLUS type : FHD6P20S-D3 FHD6P20PF-D3 : FHD6P40S-D3 FHD6P40PE-D3: Gear head : 6H_EBN : 8F_EBN: Inner Rotor Low Rotor inertia High response: Motor: FH6S20H-D3 FH6PF20H-D3: FH6S40H-D3 FH6PF40H-D3: High power simple type driver: FHD620HD3: ???



NetPower is a technology leader of open-frame and encapsulated high efficiency and high density DC-DC and AC-DC power converters. NetPower's board-mount isolated DC to DC and AC to DC power modules are available from sub 15W to over 1000W in the standard micro-power modules, 1/32nd bricks, 1/16th bricks, 1/8th bricks, quarter bricks, half bricks, and full bricks .



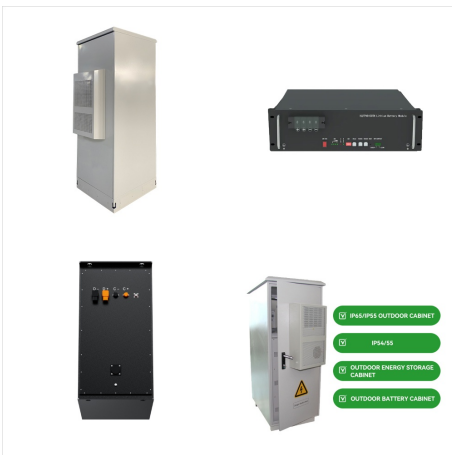
Advanced Non-Linear Controls: Aircraft AC and HVDC generators are both based on 3-stage, wound-field, synchronous designs. Generator output voltage is regulated by the GCU changing the power level of the electromagnets on the rotor. Traditional GCUs have uni-directional output voltage to increase power using only two power electronic switches.



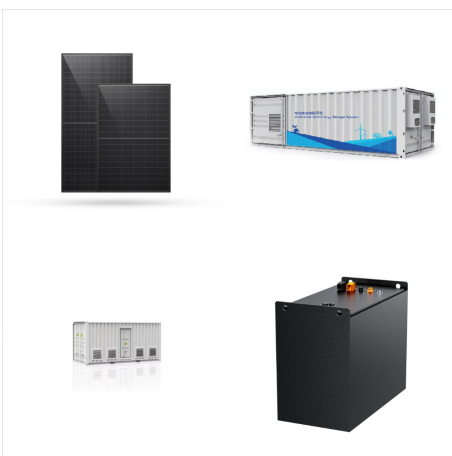
New materials and cathode designs increasingly challenge process stability and film repeatability. At the same time, larger deposition areas heighten power requirements and potential arc-related damage. Ascent(R) AMS II provides stable, repeatable power regardless of process setup or conditions. Its Arc Management System??? (AMS) technology and onboard, embedded IoT ???



Batteries and more for DC power systems. NetSure 7200 Series The NetSure 7200 DC power system is an efficient and reliable multi-bay power system that delivers intelligent control, metering and monitoring. The foundation of the system is a patented, proven 3.5kW eSure??? rectifier, featuring high frequency switching technology in a compact package.



Advanced Energy's field-proven Precision Power??? solutions offer best-in-class control and stability across a wide range of plasma power applications. Pulsed and DC Power Systems Extend process innovation with Advanced Energy's comprehensive DC and pulsed-DC suite.



For instance, our units are the only high tech systems so elegantly designed that instructions for basic operations are printed on a handheld. This allows you to quickly start enjoying the capabilities of DCC. Prodigy systems deliver advantages you probably won't find in systems priced up to 30 % higher.



Advanced Energy is firmly committed to strong and effective corporate governance practices and accountability to its shareholders. We routinely review our governance practices against evolving best practices and consider feedback and input from our shareholders. Below you will find more information on our leadership team, board of directors, governance documents, and committee ???



Advanced Energy's Products include high and low voltage power systems, thermal measuring instruments, DC and RF plasma power generators, remote plasma sources, electrostatic products, AC/DC and DC-DC power supplies, and thyristor power controls. The company also offers services globally. Its largest customers are Advanced Semiconductor Materials, Lam Research, Tokyo Electron, an???



Show Advanced Search. Products. DC Power Systems (4) DC/DC Converters (1) Power Inverters (2) Brand. Majorpower (7) Availability. In Stock (2) Industry. Telecom (4) Power Inverters, DC Rectifier Systems and DC/DC Converters. The company focuses on up-scale, dependable products that meet a variety of Telecom, Utility and Critical Power



Jay has been with DC POWER CORP since 2011, and with a strong background in sales and marketing, has been "learning on the fly" about the huge realm of possibilities on Solar Power Systems. In order to deepen his understanding of Solar Power Systems and products, he completed a successful audit of the SAIT Solar Design and Installation