

Who is advanced powerplant solutions?

Welcome to the Advanced Powerplant Solutions (APS) website. Our mission is to help our customers enjoy the sport of flying by providing parts and services to Ultralight, Light Sport Aircraft and Experimental Aircraft Owners at competitive prices in a fast, efficient and professional manner.

How many hydropower plants are there in Bhutan?

The country now has more plants open: Kurichhu (2001), Basochhu (2005), and Tala (2009). The Mangdechhu hydropower project, a 720 MW run-of-river power plant, was inaugurated in 2019. Currently approximately 70% of the hydroelectric power Bhutan produces is exported to India saving 4.4 million tons of CO₂ per year.

Is there a wind energy project in Bhutan?

In 2017, Bhutan's Department of Renewable Energy identified areas near Nyizergang Lhakhang and Gase Tshogom gewog as potential sites for developing wind energy projects. Bhutan had a plan to install a 30 MW solar energy plant in Shinghar in the Bumthang district.

Will advanced powerplant solutions provide Rotax engine training classes in 2024?

Advanced Powerplant Solutions will not be providing Rotax engine training classes in the Spring of 2024. The next opportunity will likely be in the fall of 2024. Please see for a complete list of training facilities, classes and dates.

Who supplied the underground powerhouse of Bhutanese hydroelectric project?

Bharat Heavy Electricals Limited (BHEL) supplied the underground powerhouse of the Bhutanese hydroelectric project with four 180MW Pelton turbines. The main cavern of the underground powerhouse is 53m-high and 231m-long. Hyosung Corporation and KEC International designed, constructed and tested a 400kV indoor GIS substation at Jigmeling.

How many kilowatts does a wind turbine produce in Bhutan?

Two wind turbines in Rubesa, Wangdue Phodrang, were commissioned in January 2016. These produce a combined 600 kilowatts (KW) of power, sufficient for 100 households. In 2017, Bhutan's Department of

Renewable Energy identified areas near Nyizergang Lhakhang and Gase Tshogom gewog as potential sites for developing wind energy projects.



Reliance Enterprises, in partnership with DHI, will set up a 500MW solar power plant in Gelephu Mindfulness City along with a 770MW Chamkharchhu-1 hydroelectric project. To be executed over the next two years in two phases of 250MW each, the proposed solar power project is said to become a key step in Bhutan's renewable energy journey.



Improve your power plant efficiency, stay competitive and reduce CO2 emissions with correct and reliable measurements of air-fuel-ratio, coal mass flow, coal fineness, coal velocity, particle size distribution, flame temperature, continuous boiler monitoring, identification of slagging and fouling, fuel savings through intelligent control strategies, performance improvement through ???



EUtech Scientific Engineering GmbH - EUtech Scientific Engineering was founded in 1999. The company has established itself nationally and internationally as a successful engineering partner in the areas of test stand engineering, simulation, automation and measuring technology. In addition to engineering services in all development phases, we offer turnkey test stands, ???

ADVANCED POWER PLANT SOLUTIONS BHUTAN



Advanced Powerplant Solutions Online Store. My Account; Log In; Wishlist; My Cart; Check Out; Top Search: 912-914 INTAKE MANIFOLD, 912-914 propeller, Oil, screw, SPARK PLUGS AND ACCESSORIES, tool, TOOLS; Shop by Phone 1-800-532-3462. Shopping Cart. 0 item \$0.00. My Cart - 0 item. ROTAX Engines & Parts.

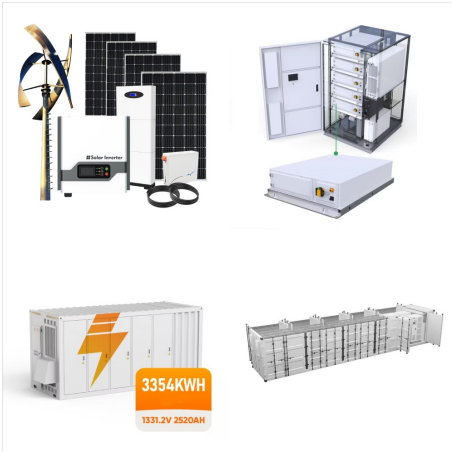


Advanced Power Solutions Are Helping Customers Reduce Emissions. October 27, 2022. The company's patented processes can be applied to engines and turbines at oil and gas sites, distributed power and industrial plants and waste-to-energy sites. Caterpillar plans to offer these technologies for deployment on our Cat engines and Solar gas

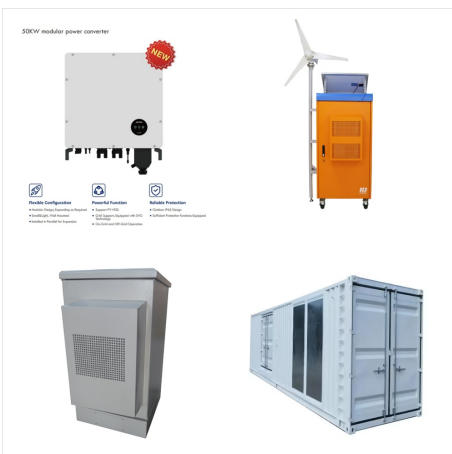


For more information about Advanced Powerplant Solutions and its services, please contact: Advanced Powerplant Solutions (800) 532-3462 info@advancepowerplant About APS Advanced Powerplant Solutions, LLC (APS), located in Delavan, Wisconsin, is the Central USA ROTAX independent Service Centre.

ADVANCED POWER PLANT SOLUTIONS BHUTAN



Solutions, is an advanced process control product that significantly improves power plant efficiency and reduces plant emissions. AES provides combustion control in boilers; coordinates multiple boilers, turbines, and heat recovery systems for optimal operation of entire power plants; and provides dynamic balancing of power production to demand.

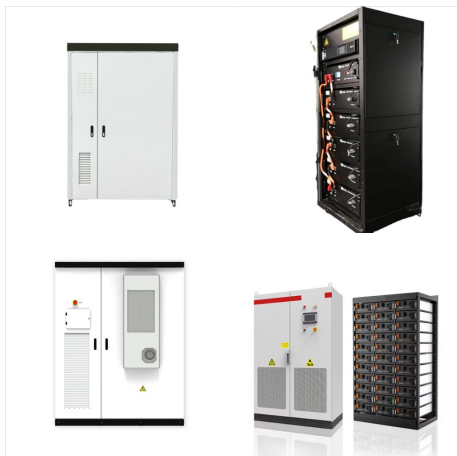


Ordering Information for Advanced Powerplant Solutions, LLC. 24-Hour Ordering Service: We keep order lines open for you around the clock between 8:00 a.m. and 5:00 p.m. (CST) our Customer Service Associates are eager to take your phone order when you call 1-800-532-3462.

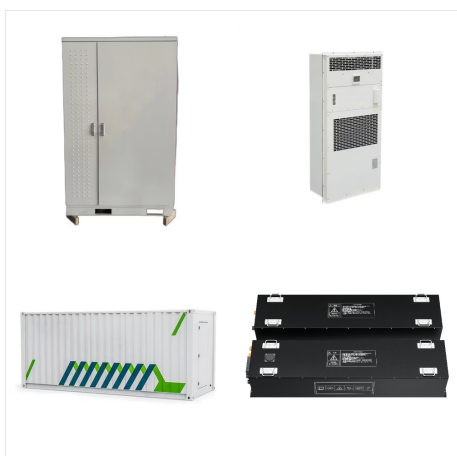


7 Followers, 1 Following, 25 Posts - Advanced Powerplant Solutions (@advancedpowerplant) on Instagram: "Advanced Powerplant Solutions, LLC (APS) is the Central USA ROTAX independent Service Centre: ROTAX engines, parts, tech support, and maintenance."

ADVANCED POWER PLANT SOLUTIONS BHUTAN



For more information about Advanced Powerplant Solutions and its services, please contact:
Advanced Powerplant Solutions (800) 532-3462
 About APS. Advanced Powerplant Solutions, LLC (APS), located in Delavan, Wisconsin, is the Central USA ROTAX independent Service Centre.



It summarises the findings of the Advanced Power Plant Flexibility (APPF) campaign of the Clean Energy Ministerial (CEM). The solutions presented in this study have been collected in close collaboration with industry stakeholders, including manufacturers, expert consultancies, system operators and plant operators.



Kurichu is a 60MW hydro power project. It is located on Kurichu river/basin in Mongar, Bhutan. According to GlobalData, who tracks and profiles over 170,000 power plants worldwide, the project is currently active. It has been developed in a single phase.

ADVANCED POWER PLANT SOLUTIONS BHUTAN



Power Plant Solutions is a leader in the technical services for the energy and marine markets. We serve clients in the Caribbean, Latin-America, Africa and Europe. If you need advanced training for your technicians and engineers or an introduction for non-technical personnel. We offer specialized on-site training in operation, maintenance



Advanced Powerplant Solutions, LLC "Seller" is not the manufacturer of Rotax??? engines, engine accessories or engine spare parts and does not offer any warranty on them. Seller hereby passes-through and transfers to buyer the ???



An average gas-fired power plant consumes up to 1900 liters/ MWh, a coal-fired power station consumes up to 4,200 liters/ MWh, and coal-nuclear plants use up to 4,000 b liters/ MWh. In the US alone, fossil-fuel ???

ADVANCED POWER PLANT SOLUTIONS BHUTAN



Advanced Power is a low-carbon energy company driven by valuable partnerships and profitable investments. the Boston-based company that premiered independent, large-scale power plants in the U.S. Mr. Spang engaged in the development of projects in the U.S., Canada, the Netherlands, Germany, Portugal, and Spain. technologies and



Tata Power has entered a memorandum of understanding (MoU) with Druk Green Power (DGPC) to develop at least 5GW of clean energy generation capacity in Bhutan.. The proposed 5GW capacity includes 4.5GW of hydropower, and features projects such as the 1.1GW Dorjilung HEP [hydroelectric power], the 740MW Gongri reservoir, the 1.8GW Jeri ???



Mangdechhu HEPP is a 720MW run-of-river power plant in Bhutan. Credit: yelantsevv. Leading lead generation providers and technology solutions for the power sector. View all. The Indian Government funded the project through a 70% loan and a 30% grant. India approved a revised cost estimate of Rs40.20bn (\$602.7m) for the project in 2016.

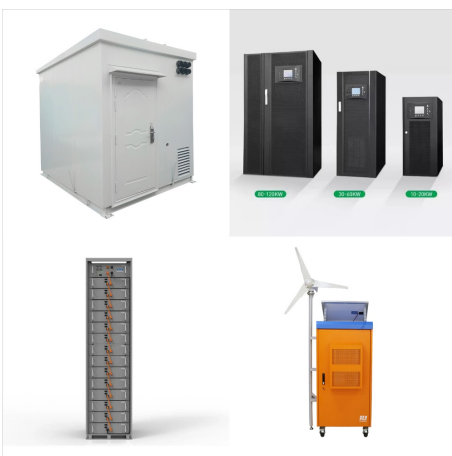
ADVANCED POWER PLANT SOLUTIONS BHUTAN



The Advanced Power Solutions plant in Gniezno is well known for its production of Zinc Carbon and Alkaline batteries. The Gniezno plant has a rich history dating back to 1993. Our plant in Poland takes care of the production, development and packaging of Zinc Carbon and Alkaline batteries. Besides that, we also take care of packaging specialty



Advanced Powerplant Solutions. Lake Lawn Airport (C59) 2375 Geneva Street. Delavan, WI 53115. Media Contact. Advanced Powerplant Solutions, LLC info@advancedpowerplant (800) 532-3462 2375 E Geneva St, Suite A, Delavan, WI 53115 <https://>



Nikachhu is an 118MW hydro power project. It is planned on Nikachhu river/basin in Trongsa, Bhutan. According to GlobalData, who tracks and profiles over 170,000 power plants worldwide, the project is currently at the under construction stage. It will be developed in a single phase.

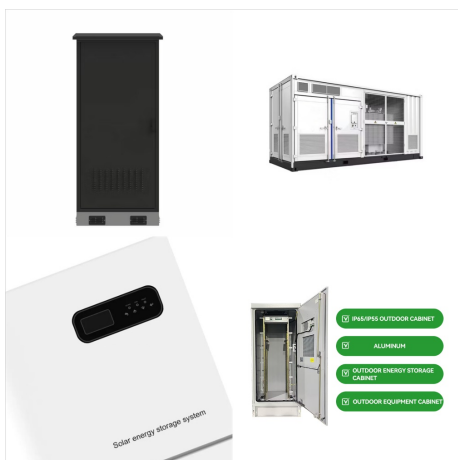
ADVANCED POWER PLANT SOLUTIONS BHUTAN



The newly formed Reliance Enterprises has partnered up with Druk Holding to jointly develop a 500-MW solar power plant in Gelephu Mindfulness City, Bhutan. This project will be executed over the next two years in two phases of 250-MW each.



Tata Power and Druk Green Power join hands for 5,000 MW clean energy projects.. Tata Power and Bhutan's Druk Green plan to transform regional energy security. clean energy transition, Dagachhu Hydropower Plant, Dr Praveer Sinha, druk green power corporation, energy security, geothermal, renewable energy, renewable energy projects, Tata Power, Tata ???



Advanced Powerplant Solutions, LLC (APS), under the new ownership of Jeremy and Daniela Knoll has acquired Leading Edge Air Foils, LLC (LEAF). Better yet, effective immediately, APS will serve as



Dagachhu is a 126MW hydro power project. It is located on Dagachhu river/basin in Dagana, Bhutan. According to GlobalData, who tracks and profiles over 170,000 power plants worldwide, the project is currently active. It has been developed in a single phase.



We provide energy solutions for every need. Sustainability. How we want to become the most sustainable company for mobile consumer energy. Careers. Advanced Power Solutions NV Nieuwe Gentsesteenweg 21 1702 Groot-Bijgaarden - Belgium. [Linkedin](#) . [About APS](#); [News](#); [Contact](#); [Panasonic](#); [Blaupunkt](#); [eneloop](#); [FAQ](#); [Careers](#); [Dealer portal](#);