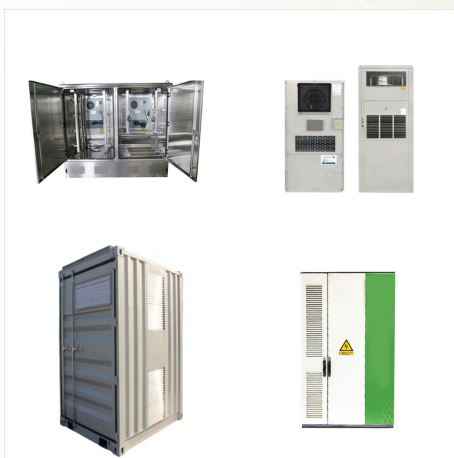




Non-renewable energy sources cannot be recycled or reused. There is a limited supply. Examples of non-renewable energy sources are fossil fuels (coal, oil and natural gas) and nuclear fuels. Burning of fossil fuels releases greenhouse gases into our atmosphere. Renewable energy sources can be recycled or reused. There is an unlimited supply.



Biomass energy relies on biomass feedstocks???plants that are processed and burned to create electricity. Biomass feedstocks can include crops, such as corn or soy, as well as wood. If people do not replant biomass feedstocks as fast as they use them, biomass energy becomes a non-renewable energy source. Hydroelectric Energy



It's also important to note that biomass is not the only form of renewable energy. Other forms of renewable energy include solar, wind, and wave energy, and many of these carry less environmental concerns and are more readily renewable than biomass. To learn more about the different forms of renewable energy, take a look at this guide. 2.

ADVANTAGES AND DISADVANTAGES OF HARNESSING NON RENEWABLE ENERGY



Pursuing sustainable development in the face of climate change and environmental degradation has led to a significant shift toward renewable energy sources. A dependable, affordable, and stable renewable energy source must meet almost any future energy need. This review explores the environmental impacts of various forms of renewable energy, ???



Effects on human health. Energy transition: the route towards renewables. The problem with non-renewable energies. Let's start with a significant fact - in just one year, humans consume what ???



In addition, a ground-breaking study by the US Department of Energy's National Renewable Energy Laboratory (NREL) explored the feasibility of generating 80 percent of the country's electricity from renewable sources by 2050. They found that renewable energy could help reduce the electricity sector's emissions by approximately 81 percent .

ADVANTAGES AND DISADVANTAGES OF HARNESSING NON RENEWABLE ENERGY



All energy sources have some impact on our environment. Fossil fuels???coal, oil, and natural gas???do substantially more harm than renewable energy sources by most measures, including air and water pollution, damage to public health, wildlife and habitat loss, water use, land use, and global warming emissions.. However, renewable sources such as wind, solar, ???

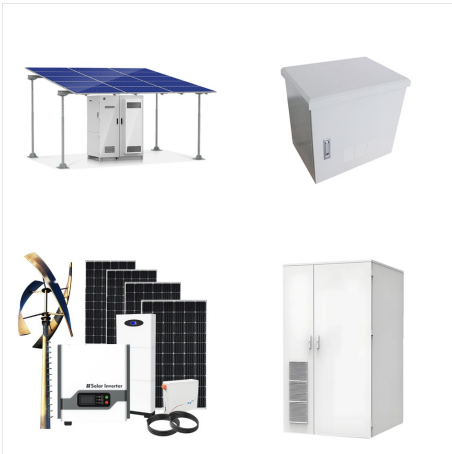


Solar panels are an efficient way to power off-grid homes. (Foto: CC0 / Pixabay / Antranias) It is renewable and free. Solar energy is a clean and renewable resource, as electricity is produced by transforming the continuous flow of energy from the sun.The fact that solar energy is powered by the sun means that you don't have to worry about running out, and a tiny ???

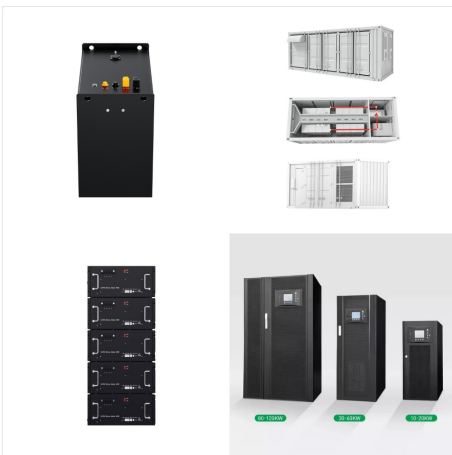


Wind Energy. Wind energy is generated by harnessing the power of the wind through wind turbines. As the wind blows, it causes the turbine's blades to rotate, converting the kinetic energy into

ADVANTAGES AND DISADVANTAGES OF HARNESSING NON RENEWABLE ENERGY



The estimated energy that can be recovered and utilized on the surface is 4.5×10^6 exajoules, or about 1.4×10^6 terawatt-years, which equates to roughly three times the world's annual consumption of all types of energy. Although geothermal energy is plentiful, geothermal power is not. The amount of usable energy from geothermal sources



In the generation of hydroelectric power, water is collected or stored at a higher elevation and led downward through large pipes or tunnels (penstocks) to a lower elevation; the difference in these two elevations is known as the head. At the end of its passage down the pipes, the falling water causes turbines to rotate. The turbines in turn drive generators, which convert ???



In this context, understanding the advantages and disadvantages of renewable and n. Introduction: India, as one of the world's largest and fastest-growing economies, faces significant challenges

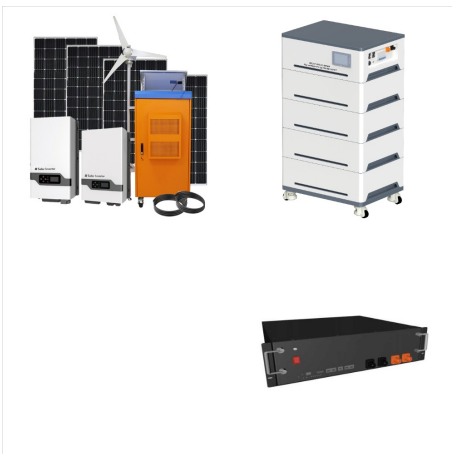
ADVANTAGES AND DISADVANTAGES OF HARNESSING NON RENEWABLE ENERGY



Non-renewable energy is the kind of energy that comes from non-renewable resources that will eventually run out and cannot be replenished. There are two major types of energy: Renewable and Non-renewable Energy. The nuclear fission chain reaction is used to harness the energy present in the nucleus of an atom. A nuclear reactor is used for



In as much as nonrenewable energy sources have multiple advantages, they also have their share of disadvantages. Here are the major pros and cons of nonrenewable energy. 10 Biggest Pros and Cons of Nonrenewable Energy The fact that the residue products from some nonrenewable energy sources such as fossil fuels are non-degradable means that



Nonrenewable energy comes from sources that will run out or will not be replenished in our lifetimes???or even in many, many lifetimes.. Most nonrenewable energy sources are fossil fuels: coal, petroleum, and natural gas. Carbon is the main element in fossil fuels. For this reason, the time period that fossil fuels formed (about 360-300 million years ???

ADVANTAGES AND DISADVANTAGES OF HARNESSING NON RENEWABLE ENERGY



Harnessing the Geothermal Energy. To harness geothermal energy, a hydrothermal convection system is used. In this process, a hole is drilled deep under the earth, through which a pipe is inserted. The steam trapped in the rocks is routed through this pipe to the earth's surface.



Wind Energy Advantages and Disadvantages Wind is a renewable energy source and one of the cleanest forms of energy. Learn more about the advantages and disadvantages of wind power here. Harnessing wind as energy is an idea that is thousands of years old. Because it does not involve burning limited fossil fuels and because using wind



These energy sources are solar, flowing water, wind, hydrogen and geothermal. We get renewable solar energy directly from the sun and indirectly from moving water, wind and biomass. Like fossil fuels and nuclear power, each of these alternatives renewable sources of energy has their own advantages and disadvantages.

ADVANTAGES AND DISADVANTAGES OF HARNESSING NON RENEWABLE ENERGY



The political party further taints the advantages and disadvantages of renewable energy in the light that suits their party the most. This ensures the average man cannot gain accurate information, and the project is further stalled or ignored. Renewable energy has geographical limitations



Nuclear energy protects air quality by producing massive amounts of carbon-free electricity. It powers communities in 28 U.S. states and contributes to many non-electric applications, ranging from the medical field to space ???



The data in these Fast Facts do not reflect two important renewable energy resources: traditional biomass, which is widespread but difficult to measure; and energy efficiency, a critical strategy for reducing energy consumption while maintaining the same energy services and quality of life.

ADVANTAGES AND DISADVANTAGES OF HARNESSING NON RENEWABLE ENERGY



Wind power systems harness the kinetic energy of moving air to generate electricity, offering a sustainable and renewable source of energy. Wind turbines (WT), the primary components of these systems, consist of blades that capture wind energy and spin a rotor connected to a generator, producing electrical power through electromagnetic induction.



Conventional energy source based on coal, gas, and oil are very much helpful for the improvement in the economy of a country, but on the other hand, some bad impacts of these resources in the environment have bound us to use these resources within some limit and turned our thinking toward the renewable energy resources. The social, environmental, and ???



Pros Cons; This energy source is more environmentally friendly than conventional fuel sources.: The largest single disadvantage of geothermal energy is that it is location specific.: A source of renewable energy.: Gases are released into the atmosphere during digging.: The number of exploitable geothermal resources will increase with ongoing research and development in the ???

ADVANTAGES AND DISADVANTAGES OF HARNESSING NON RENEWABLE ENERGY



The most important source of non-renewable energy used extensively is fossil fuels which have taken millions of years to be formed. Thus, it is important to use them judiciously. This requires us to look for alternate sources. Advantages and Disadvantages of Tidal Energy. Some advantages of tidal energy are: Environment-friendly; A highly



Unlike solar and wind energy, geothermal energy is always available, but it has side effects that need to be managed, such as the rotten-egg smell that can accompany released hydrogen sulfide. Ways To Boost Renewable Energy Cities, states, and federal governments around the world are instituting policies aimed at increasing renewable energy. At



Nuclear energy protects air quality by producing massive amounts of carbon-free electricity. It powers communities in 28 U.S. states and contributes to many non-electric applications, ranging from the medical field to space exploration.. The Office of Nuclear Energy within the U.S. Department of Energy (DOE) focuses its research primarily on maintaining the ???