

Are Alienware fans loud?

The Alienware fans are loud, don't bother making them quieter, this is a high performance laptop that needs this amount of cooling to prevent it from melting itself. For Media consumption, go for the Quiet profile to try and lower the fan noise as much as possible.

Does Alienware Aurora R15 have a 240mm cooler?

Clearly, someone at Alienware has heard our complaints, because the Alienware Aurora R15 (starting at \$1,799.99, tested at \$4,929.99) has finally moved to a 240mm cooler, with five fans total in the chassis and more ventilation for fresh air to come in.

Is Alienware a good CPU?

Alienware's mindset is different than other manufacturers' and it took me a while to figure that out. Instead of them limiting the CPU's performance to help reduce some heat, Alienware gives you the full CPU power up to its design thermal limits of 100C (Intel) or 105C (AMD).

Does Alienware have a cooler?

Alienware has long had a problem with proprietary components and expensive pricing, but the R15 revision of the Aurora fixes the biggest issue that has faced Alienware desktops: thermals and noise. The upgraded cooler is a huge jump for the machine, offering cooler and quieter performance than even many custom-built gaming PCs.

Does Alienware limit CPU power?

Instead of them limiting the CPU's performance to help reduce some heat, Alienware gives you the full CPU power up to its design thermal limits of 100C (Intel) or 105C (AMD). This is normal, and even Dell mentions that there's no problem running your Alienware laptop at its limits.

Should you buy Alienware Aurora R15?

It's a huge improvement. Alienware desktops have always struggled with thermals and noise, but the Aurora R15 feels like a revelation for the brand in effectively dealing with heat. The downside is that improvements aren't free. The dreaded 120mm liquid cooler is stock on the AMD configuration, while the Intel build starts

ALIENWARE AURORA SYSTEM FAN VS CPU FAN POWER



with air cooling.



So I kept the original Dell fan intake on the bottom and the original Dell exhaust fan on the CPU cooler just used the Y-cable that came with the Noctuas and put the Dell fans as the master on the 4-pin side of the Y-cable, and the 2 Noctua's on the 3-pin slave side of the Y-cable). No Bios errors at all and they all work.



My Alienware Aurora R8 (i7-9700, RTX 2070) is a month old, but since the day I purchased it, I notice the fans are really load. My CPU is Liquid Cool. The Front Fan (Intake) sounds like a vacuum when near 50% usage. I was looking to replace the front front, but not sure what fan is compatible or recommended, any help would be great.



Aurora R10 fan replacement issues Technical Support I replaced the top fan and CPU fan with a Corsair H60 AIO and the front fan with a Corsair ML120. I use Alienware Command Center to control the fans with custom curves. I did not plug the fan power into the tach the way some do to trick the BIOS check. The fan power is coming from the fan

ALIENWARE AURORA SYSTEM FAN VS CPU FAN POWER



With the pump tach connected to CPU FAN, AWCC will show CPU FAN at ~90% (depending on the version - apparently it may just show Running). It shows 90% because the OEM CPU fan runs around 4300 rpm. The H60 pump runs at around 4000 rpm. So a reading in AWCC of ~90% is actually correct.



I run mine with stock cooling it came with. I have the cryo cooling on the CPU, and the stock air on the case fans and the 3080. I have the gpu fans set at 75%, using MSI Afterburner to set those speeds on the GPU. Using AWCC, I have the cpu fan set with an off-set of +50%, and the rest of the case fans have a 40% off-set.



Compatible with Dell Alienware Aurora R6 R7 R8 R9 R10 R11 R12 Tower Gaming Desktop series ONLY. Fan Part Number(s): PP749, 0PP749, CN-0PP749, 10-100-2122005-01C ; Heatsink Assembly Part Number(s): MH0HN, 0MH0HN, CN-0MH0HN. Liquid cooling system CPU heat exchanger with integrated pump. Each Pack come with 1x Asetek Liquid Water CPU ???

ALIENWARE AURORA SYSTEM FAN VS CPU FAN POWER



Buy Deal4GO 105W RGB Water CPU Liquid Cooling Fan System (Non Cryo-tech) FFD35 69XJW Replacement for Dell Alienware Aurora R14 R13 Desktop: CPU Cooling Fans - Amazon FREE DELIVERY possible on eligible purchases Malfunctions covered after the manufacturer's warranty. Power surges covered from day one. Real experts are available 24/7 ???



It is a little dark up top, but it looks like you have the radiator fan connected to TOP_FAN and the pump power connected to CPU_FAN. Try connecting the pump power to PUMP_FAN mobo header. Make sure all of your RAM and your graphics card is fully seated and locked in the slot. Put a light on and drop more close-up photos (it's free)

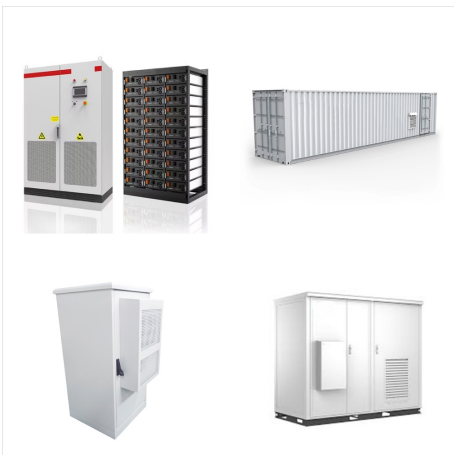


The only fans known to work without errors, aside from the Alienware fans, are Corsair ML120 Pros. That being said The Alienware fans actually run at higher RPM (4000 vs 2600) than the Corsairs, and whilst they're a little louder, they shift plenty of air around at full speed.

ALIENWARE AURORA SYSTEM FAN VS CPU FAN POWER



Faster RAM speeds permit your processor to access the data stored inside the memory faster. This is important for the overall speed of your system. The motherboard of the Alienware Aurora R8 supports RAM speeds of up to 3000 MT/s. Wi-Fi Support. Alienware Aurora R8 supports Wi-Fi and Bluetooth combo card with the on-board M.2 2230 (Wi-Fi/BT) slot.



Alienware Aurora R13 booting problem. Turning on and off within seconds, CPU fan detect failure. When boot into system, it won't get passed 5 mins usage before crashing again with extremely slow computer and loud fan after 2-3mins after start up.



Hi All, Was looking for some advice. I've just bought a Aurora Ryzen R10 with a 6800XT and Ryzen 9 5900X with liquid cooling. I've been doing some reading and the majority of complaints about the model is that the stock fans aren't really good enough and run quiet loud, so I thought I'd look for a replacement model that was more efficient at cooling and quieter.

ALIENWARE AURORA SYSTEM

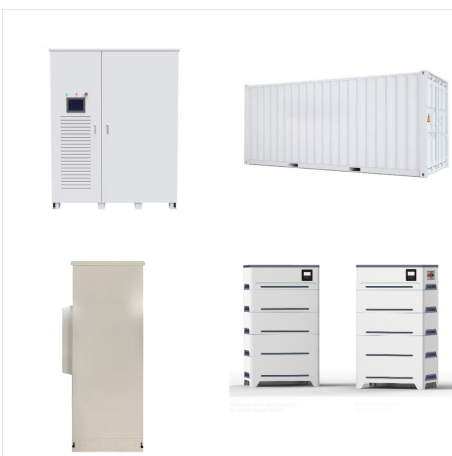
FAN VS CPU FAN POWER



I installed a liquid cooler and putting the pump connector onto the pump header and leaving the cpu fan header empty leads to CPU FAN ERROR during boot, but connecting the pump connector onto the cpu fan header makes it work.

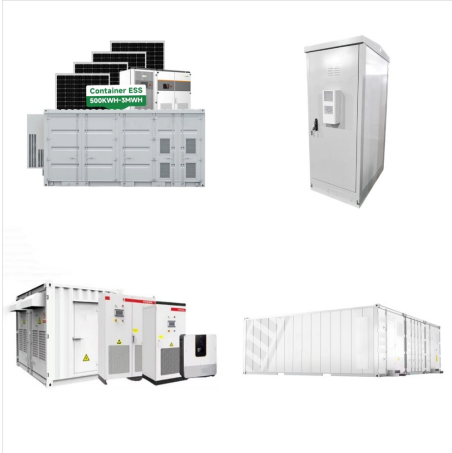


Alienware Aurora R11 is a gaming computer and comes assembled with a dedicated graphics card. This is important for the overall speed of your system. The motherboard of the Alienware Aurora R11 supports RAM speeds of up to 3400 MT/s. Power Supply. The Alienware Aurora R11 comes with a 1000 Watt PSU. Having a power supply with high power



Cores almost 20 degrees cooler, and my computer doesn't go off like a jet engine each time I open up an app. Cleaned out the goo, reseated with fresh thermal paste, and should be good to go until I replace this Substitute character removed as per TOU> cooling system dell included in the system. My only concern now is any lingering heat damage

ALIENWARE AURORA SYSTEM FAN VS CPU FAN POWER



My computer also has a CPU fan failure. It is an Alienware R16 and according to tech support this morning, 10-14- 24, the part is on backorder till the 3rd of December. This is extremely frustrating, the computer was purchased in June of this year.



The story is the same for the Corsair ML120 fans plugged into the TOP_FAN header. The blades will not spin on power up and will trigger ePSA diagnostics. However it should be noted at this point that all fans purchased, will spin up on power on when connected to any other fan header such as FRONT_FAN, or CPU_FAN. Once getting past ePSA by

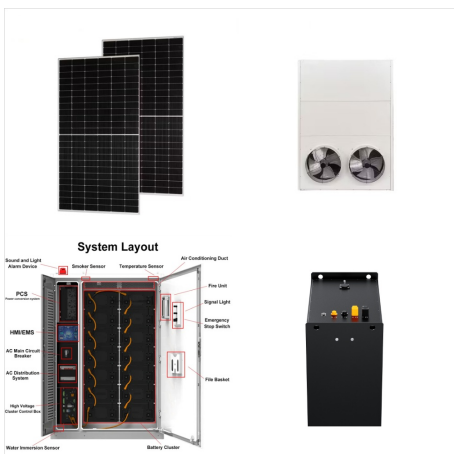


Regarding the first point, if the BIOS detects a liquid cooled CPU, it will check for the VRM heatsink, and throw a startup error if none is found. Connecting the pump tach to FAN_CPU is sufficient to signal the BIOS that the CPU has a fan connected and is air cooled (no VRM ???)

ALIENWARE AURORA SYSTEM FAN VS CPU FAN POWER



Faster RAM speeds permit your processor to access the data stored inside the memory faster. This is important for the overall speed of your system. The motherboard of the Alienware Aurora R6 supports RAM speeds of up to 2666 MT/s. Wi-Fi Support. Alienware Aurora R6 supports Wi-Fi and Bluetooth combo card with the on-board M.2 2230 (Wi-Fi/BT) slot.



Exhaust fans are the 2 stock fans from the machine on a custom fan curve using a noctua 2 way splitter. Top of the machine had perforations drilled to allow the hot air to escape more freely. In Hind sight the standard vents would be okay if ???



My friend has an R11 purchased rom Best Buy. It has the 1000 watt power supply but fan CPU cooling and it's louder than my setup while running a bit warmer. It's still not a cause for concern. Alienware uses loud, fast fans that really push/pull air. Some people have replaced them with quieter, more expensive fans that perform the same (or

ALIENWARE AURORA SYSTEM FAN VS CPU FAN POWER



What is a sys fan vs CPU fan? A system fan sits inside the computer case and regulates airflow. A CPU fan cools the CPU directly, as it produces a lot of excess heat and needs its own cooling arrangement. A CPU ???



I recently purchased an Alienware Aurora R10 Ryzen Edition, and I began setting up my new PC. which I believe I heard, but not the fan itself. If you power on with the swing arm door open, do you see the top fan spinning? 24 processor-cooling assembly CPU-fan connector (CPU_FAN) TOP FAN CONNECTOR . 1; 2; Cancel Post. Dell Support Resources.