

Does Alinta offer a solar feed-in tariff?

Alinta offers electricity plans for solar owners. Listed here are Alinta Energy's solar feed-in tariffs for households in NSW, QLD, SA and VIC. Select your State below to view solar feed-in tariffs for Alinta's plans. Solar feed-in tariffs are important, but to find the best deal you must consider usage rates and supply charges.

How much does a solar feed-in tariff cost in NSW?

It is a competitive market so electricity retailers do have an incentive to offer a reasonable feed-in tariff to win customers with solar panels installed. According to Energy NSW, the benchmark rate is 4.9 to 6.3 cents per kWh for 2024/2025 in NSW. What retailer has the best solar feed-in tariff in NSW?

Does Alinta Energy offer solar?

A competitive solar feed-in tariff. The great news is that all Alinta Energy plans offer solar to eligible customers. And, whilst we don't install solar panels, we instead focus on offering our customers the best combination of a competitive electricity offer and a competitive solar feed-in tariff.

Are feed-in tariffs still available in Australia?

State-mandated feed-in tariff incentives are no longer available to new solar customers in almost all of Australia's states and territories. Instead, rates are largely voluntary for electricity retailers in most states; they usually fall in the range of 6-15¢/kWh - generally lower than price of retail electricity purchased from the grid.

What are solar feed-in tariffs?

Solar feed-in tariffs are a payment that you receive from your chosen electricity supplier in exchange for any surplus clean energy that your solar panels feed back into the grid. There have been many changes to this legislation in New South Wales over the last few years.

Does a higher solar feed-in tariff mean a better deal?

A higher solar feed-in tariff rate from your electricity retailer does not necessarily mean a better overall deal - make sure that you consider each retail electricity plan as a whole. You can try our Solar-friendly Retail Plan Comparison Tool to get a more complete picture. At the moment, there is no mandatory minimum feed-in tariff

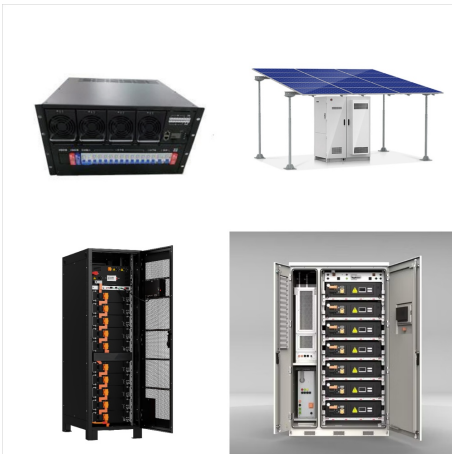
ALINTA ENERGY SOLAR FEED IN TARIFF NSW



rate in NSW.



The solar feed in tariffs for Alinta residential plans in postcode 3000 on the Citipower network are all 4.9 c/kWh. The plan with the highest solar feed in tariff is SelectSaver - Two Period Time of Use + CL, with a feed in rate of 4.9 c/kWh.



The solar feed in tariffs for Alinta residential plans in postcode 4000 on the Energex network are all 8 c/kWh. The plan with the highest solar feed in tariff is Standing Offer (TOU), with a feed in rate of 8 c/kWh.



Best Solar Feed In Tariff NSW. Looking for a better solar plan or provider in Sydney? We compare plans and providers that operate in and around the Sydney area to help you find the best fit for your needs. Alinta Energy | HomeSaver Select Distributed By Ausgrid. Basic Plan Information. See offer Brand Satisfaction Glossary 6.7c/kWh 8% less

ALINTA ENERGY SOLAR FEED IN TARIFF NSW



Social Energy enhanced solar and battery feed-in tariffs Social Energy is a UK-based company that entered the Australian market in late 2020.⁶ Customers that have a battery system with their solar panels are offered 40 cents per kWh for the first 300kWh of energy exported each quarter, after which a lower tariff is offered.⁷ For



Source: 1 Origin Energy, 2 AGL, 3 EnergyAustralia, 4 Energy Made Easy 5 Ergon Energy. VIC Feed-in Tariffs. Victorian solar owners can reap both the benefits of competition and the benefits of price controls. The state mandates a minimum rate of 10.2c/kWh (reducing to 6.7c in July 2021) for feed-in tariffs, but allows retailers to compete in the airspace above the ???



The solar feed in tariffs for Alinta residential plans in postcode 5000 on the SA Power Networks are all 8 c/kWh. The plan with the highest solar feed in tariff is Standing Offer (TOU Interval), with a feed in rate of 8 c/kWh.

ALINTA ENERGY SOLAR FEED IN TARIFF NSW



Solar feed-in tariff offers available in NSW ??? April 2023 . 28 April 2023 . IPART tracks the solar feed -in tariffs offered by different retailers. We have compared the offers Alinta Energy 6.7 Nectr 4.4 Dodo Power & Gas 6.2 Origin Energy 2 Globird Energy 1 Source: Energy Made Easy extracted 28 March 2023 and IPART analysis .



This publication reviews Alinta Energy and AGL's plans in VIC, NSW, QLD, SA, ACT, and WA published on their website as of 03/09/2024. solar feed-in tariff credits that your solar system could generate. The VDO comparison will differ based on tariff type and location (distribution area). Your actual energy bill may be significantly



Compare electricity prices and solar feed-in tariffs on Energy Made Easy. Solar feed-in tariffs are only one part of an electricity plan. Some plans with higher feed-in tariffs may have conditions attached, or be paired with higher retail prices, so you need to look at the entire energy plan, as well as your electricity consumption and solar exports when considering which plan is best for ???

ALINTA ENERGY SOLAR FEED IN TARIFF NSW



? However, Alinta does have a standard solar feed-in tariff available across all their electricity plans for households who have invested in solar PV systems and want to export solar energy back to the grid. Alinta Energy solar feed-in tariffs by state: New South Wales: 6.7c/kWh; Victoria: 6.7c/kWh; Queensland: 8c/kWh; South Australia: 8c/kWh; It



Simply put, the solar feed in tariff works by you selling excess energy back to your electricity supplier and receiving money for what you sell. This article covers exactly how the solar feed in tariff works and touches on all the most common questions associated with the solar feed in tariff.

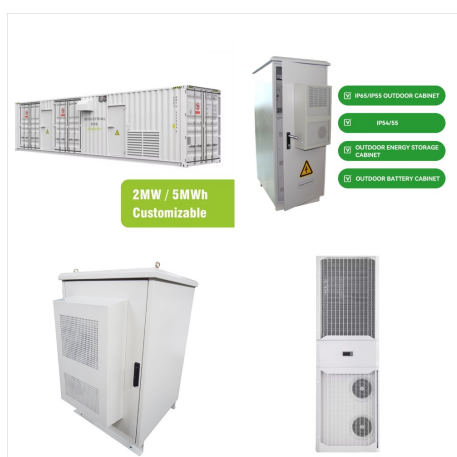


Listed here are Energy Locals solar feed-in tariffs for households in ACT, NSW, Queensland, SA, Tasmania and Victoria. Energy Locals have set out to provide Australian customers with as much clean energy as they need to live comfortable lives at a value price.

ALINTA ENERGY SOLAR FEED IN TARIFF NSW



Alinta Energy Amber Electric Globird Energy Pooled Energy QEnergy ReAmped Energy Simply Energy Elysian Energy CovaU Locality Planning Energy Mojo Power Solar feed??in tariffs available in NSW April 2019 The offer with the highest feed-in tariff may not be the best overall deal. IPART 2019-20 benchmark range 8.5 to 10.4 c/kWh



? Solar feed-in tariffs in NSW. Solar feed-in tariffs (FIT) are the payment made to solar owners for the energy they generate and send back into the grid. In New South Wales the retail energy market is deregulated. Alinta Energy: NSW: Residential: 6.7: 6.7: 670: PV system is limited to 5kW inverter capacity. Red Energy: NSW: Residential: 5.0



In QLD, in order to maintain your high solar feed-in tariff rate, you have to stay where you are. If you move house, sell the home, rent it out, or change the name on the electricity account, you lose the high rate. The only exception is it can be transferred between spouses if one moves out of the house.

ALINTA ENERGY SOLAR FEED IN TARIFF NSW



What do Australians think of Alinta Energy solar energy provider? 4.07/5 overall for Customer Satisfaction ??? higher than the average of 4 4.13/5 for Trust ??? lower than the average of 4.3



*Feed-in tariffs are for residential customers on a single rate tariff in Melbourne on the Citipower Network. Accurate as of May 29 2022 New South Wales Feed-In Tariffs. There is no set minimum feed-in tariff rate in NSW, although there is a benchmark range of 4.6 to 5.5c/kWh, according to Energy NSW. Top 3 feed-in tariff rates NSW



The electricity gets used to power your home. Excess electricity is fed into the grid which earns you a feed-in credit. If you prefer, you can store the excess electricity you've generated by installing a solar battery, though this will increase your ???

ALINTA ENERGY SOLAR FEED IN TARIFF NSW



Market Solar Feed-in Tariff x Solar Electricity
Supplied 6.3 If we have been unable to calculate
your Solar Electricity Supplied for a relevant period
based on a reading of your Meter your Solar
Electricity Supplied for that period will be zero
unless your Distributor estimates the generation in
accordance with the Applicable Regulations.

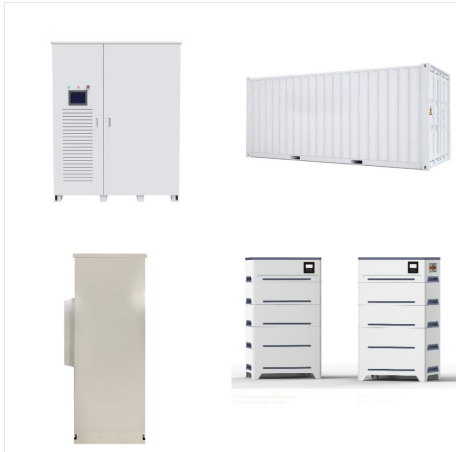


Alinta Fees. Take a look at the fees charged by
Alinta on each of their plans available in your
postcode: Alinta Fees; Alinta Solar Feed In Tariffs.
Interested in comparing solar feed in tariffs across
Alinta plans? Take a look at our plan by plan
comparisons: Alinta Solar Feed In Tariff Rates &
Rebates NSW; Alinta Solar Feed In Tariff Rates



Looking for the Best Solar Feed In Tariff in NSW?
Electricity Monster is the solution to all your solar
and energy needs. Alinta Energy (Priority Plus)
6.70: \$1658: CovaU (Freedom) 5.50: \$1497:
Diamond Energy (Everyday Renewable Saver)
5.20: \$1756

ALINTA ENERGY SOLAR FEED IN TARIFF NSW



If you are in the Essential distribution zone and have your basic meter replaced with a smart meter after 1 July 2024, you will automatically be placed on the Essential Sun Soaker tariff for energy usage and the Essential Solar Export tariff for solar generation. You will have the option to switch to a Demand tariff with our market-offer solar

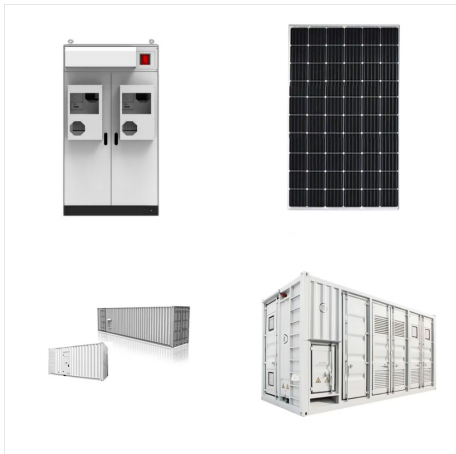


Feed-in tariffs for renewable energy pay for excess electricity generated by small-scale solar photovoltaic (PV) or wind power systems. Plans and amounts paid vary among retailers and can be compared using the Energy Made Easy website.



Discover Alinta Energy offers, plans, and solar feed-in-tariffs. 1300 560 964 Energy. Energy Help Guides; Compare Energy Plans; Electricity in Australia One of the pro's of Alinta Energy is their solar feed-in tariff for households in NSW, QLD, South Australia, and Victoria. Alinta Energy Solar Feed-in Tariff; State: Alinta Energy Feed-in

ALINTA ENERGY SOLAR FEED IN TARIFF NSW



? Listed here are Alinta Energy's solar feed-in tariffs for households in NSW, QLD, SA and VIC. Select your State below to view solar feed-in tariffs for Alinta's plans. Solar feed-in ???



Origin provide a number of electricity plans designed for solar owners offering a range of solar feed-in tariffs (FIT). Listed here are Origin Energy solar feed-in tariffs for households in ACT, NSW, QLD, SA and VIC. Select your State below to view solar feed-in tariffs for Origin's plans.



*The minimum single rate feed-in tariff rate set by the Essential Services Commission is 3.3c/kWh. The minimum time of use feed-in tariff Option 2 rates set by the Essential Services Commission are Peak 8.4c/kWh, Shoulder 4.1c/kWh and Off Peak 2.1c/kWh.

ALINTA ENERGY SOLAR FEED IN TARIFF NSW



Learn about solar feed-in tariffs in NSW, Australia, and how they can help you save on energy bills. The government has called on NSW energy retailers to offer solar customers feed-in tariffs that meet a benchmark set by the Independent Pricing and Regulatory Tribunal (IPART). Alinta Energy (FIT) 7.5c: 7.5c: Amaysim (FIT) 0.0c: 15.0c