

Does Alinta offer a solar feed-in tariff?

Alinta offers electricity plans for solar owners. Listed here are Alinta Energy's solar feed-in tariffs for households in NSW, QLD, SA and VIC. Select your State below to view solar feed-in tariffs for Alinta's plans. Solar feed-in tariffs are important, but to find the best deal you must consider usage rates and supply charges.

Does Alinta Energy offer solar?

A competitive solar feed-in tariff. The great news is that all Alinta Energy plans offer solar to eligible customers. And, whilst we don't install solar panels, we instead focus on offering our customers the best combination of a competitive electricity offer and a competitive solar feed-in tariff.

Which solar plans have a higher feed in tariff?

Plans with a higher feed in tariff include: Here's a list of the solar feed in tariffs associated with the Alinta Standing Offer (Demand SR + CL1, CL2) plan for the postcode 2000.

How do I choose a solar feed-in tariff?

Solar feed-in tariffs are important, but to find the best deal you must consider usage rates and supply charges. Plans with big feed-in tariffs often come with bigger usage and supply charges. Many solar plans have stepped FiTs and caps too. WATTevery makes it easy to find the plans that will maximise your solar savings.

How much is a monthly rebate on Alinta?

Based on an estimate of 10 kWh of feed in from your solar system to the grid each day, we calculate that you could receive a monthly rebate of \$24.00 on this Alinta plan on the SA Power Networks, using available solar feed in schemes.

How much does Alinta Energy Homesaver cost in SA?

In SA, AGL Value Saver offer the same annual cost Alinta Energy HomeSaver. *Calculated based on usage of 4000kWh/year for a residential customer on a single rate tariff in the SA Power Networks. The DMO reference price is: \$2,230 / year. Click here to view plan energy fact sheets.

ALINTA ENERGY SOLAR FEED IN TARIFF



Who pays the solar feed in tariff? Your energy retailer will pay for the solar you sell back. Depending on where you live, this could be a range of different providers who service different areas. Some of the larger ones are Origin Energy, AGL, Energy Australia and Alinta. These retailers are like a shop front in some ways.



Solar feed-in tariffs are a payment that you receive from your chosen electricity supplier in exchange for any surplus clean energy that your solar panels feed back into the grid.. There have been many changes to this legislation in New South Wales over the last few years. When solar panels were new 10 years ago, the feed-in tariff that residential households ???

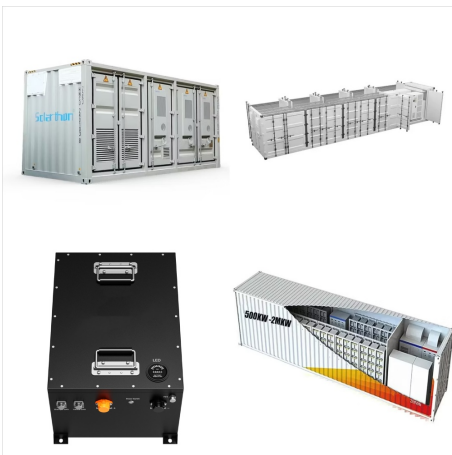


Next, we'll cover the latest solar feed-in tariffs (FiT) offered by Alinta Energy and AGL. If you're looking for a high solar feed-in tariff, check out our table below where we list the maximum feed-in tariffs for both retailers. However, a high FiT ???

ALINTA ENERGY SOLAR FEED IN TARIFF



The electricity gets used to power your home. Excess electricity is fed into the grid which earns you a feed-in credit. If you prefer, you can store the excess electricity you've generated by installing a solar battery, though this will increase your ???



Solar feed-in tariffs are a payment that you receive from your chosen electricity supplier in exchange for any surplus clean energy that your solar panels feed back into the grid.. There have been many changes to this ???



The solar feed in tariffs for Alinta residential plans in postcode 4000 on the Energex network are all 8 c/kWh. The plan with the highest solar feed in tariff is Standing Offer (TOU), with a feed in rate of 8 c/kWh.

ALINTA ENERGY SOLAR FEED IN TARIFF



? Solar feed-in tariffs in QLD. Solar feed-in tariffs (FIT) are the payment made to solar owners for the energy they generate and send back into the grid. In South East Queensland, the retail energy market is deregulated. This means energy ???



Alinta Energy FAQs MA-1100 02.12.2022 Page 1 of 7
??? Solar Feed ??? In Tariff is available* for eligible Residential customers VIC, NSW, QLD & SA Electricity & Gas BusinessDeal ???
BusinessDeal plan is a rate only product ???
BusinessDeal plan is based on Alinta Energy applicable market offer tariffs



Energy, Momentum Energy and Alinta Energy had the cheapest retail plans for residential customers in 2020???21. Blue NRG, Origin Energy, Momentum Energy and Alinta Energy had the cheapest plans for Solar feed -in tariffs are not set at the same level as the variable usage charges on retail electricity plans. This is because retailers only

ALINTA ENERGY SOLAR FEED IN TARIFF



A solar feed-in tariff or FiT refers to how much you are paid per kWh of electricity when you export excess energy from your solar installation to the grid. Alinta Energy: 6.7c: 6.7c: Simply Energy: 5.5c: 5.5c: Powershop: 0.0c: 13.0c: Dodo: 7.0c: 7.0c
*Feed-in tariffs are for residential customers on a single rate tariff in Sydney on the



In terms of electricity prices, Red Energy showcased competitive rates in almost every state. However, regarding solar feed-in tariffs and features, Red Energy offers better value over Alinta Energy. Red Energy also thrived in the renewables category, beating Alinta Energy by scoring better in almost every category.



Market Solar Feed-in Tariff x Solar Electricity Supplied 6.3 If we have been unable to calculate your Solar Electricity Supplied for a relevant period based on a reading of your Meter your Solar Electricity Supplied for that period will be zero unless your Distributor estimates the generation in accordance with the Applicable Regulations.

ALINTA ENERGY SOLAR FEED IN TARIFF



3.1 Bills for plans with feed-in tariffs, excluding solar feed-in tariff credits 12
3.2 Comparison and ranking of net overall electricity bills 16
3.3 Incentives 21
3.4 Presentation of solar plans on Energy Made Easy 21
3.5 GST status of solar feed-in tariffs 21
GLOSSARY 22
APPENDIX A: BILL CALCULATIONS 24



The solar feed in tariffs for Alinta residential plans in postcode 2000 on the Ausgrid network are all 6.7 c/kWh. The plan with the highest solar feed in tariff is Standing Offer (TOU), with a feed in ???



? Listed here are Alinta Energy's solar feed-in tariffs for households in NSW, QLD, SA and VIC. Select your State below to view solar feed-in tariffs for Alinta's plans. Solar feed-in ???

ALINTA ENERGY SOLAR FEED IN TARIFF



Alinta Energy: 8c: 8c: Amber: 0c: 2.73c (estimated based on wholesale prices) Ampol Energy: 5c: 5c: CovaU Energy: 5.5c: 5.5c: Diamond Energy: 0c: 5.2c: Discover Energy: TBC: TBC: Dodo: 5c: 5c: In south-east Queensland, there is no set minimum solar feed-in tariff that energy retailers have to adhere to. This is why shopping around for a



What retailer has the best solar feed-in tariff in QLD? At the time of updating (October 2024), ENGIE and Origin Energy currently has the highest solar feed-in tariff offer in QLD, whereby the maximum a customer can get is 12 cents per kilowatt hour (c/kWh). Globird Energy comes in second at 11c/kWh.



However, Alinta does have a standard solar feed-in tariff available across all their electricity plans for households who have invested in solar PV systems and want to export solar energy back to the grid. Alinta Energy solar feed-in tariffs by state: New South Wales: 6.7c/kWh; Victoria: 6.7c/kWh; Queensland: 8c/kWh; South Australia: 8c/kWh; It

ALINTA ENERGY SOLAR FEED IN TARIFF



? Solar feed-in tariff - highest first; Price/year (estimated) - lowest first; Price/year (estimated) - highest first; AGL | Residential Netflix Plan - New To AGL Alinta Energy | Carbon Balance - Single Rate Outstanding Value - Solar Electricity Plans QLD. Distributed By Energex. Basic Plan Information.

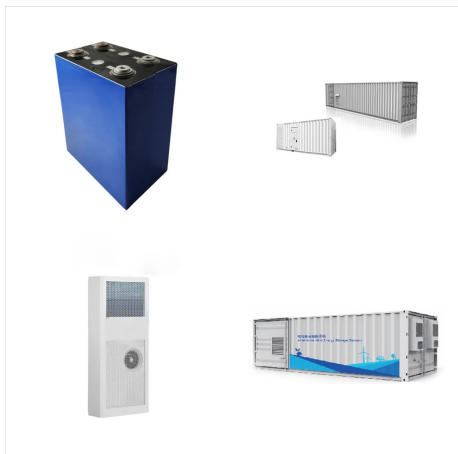


? Alinta Energy - HomeSaver Essential. 19% less than VDO. \$1,177. No lock-in contract or exit fees; 3.3c/kWh solar feed-in tariff; Nectr - 100% Clean. 15% less than VDO. is higher than their regular electricity offers. In Victoria, the ???



If you are in the Essential distribution zone and have your basic meter replaced with a smart meter after 1 July 2024, you will automatically be placed on the Essential Sun Soaker tariff for energy usage and the Essential Solar Export tariff for solar generation. You will have the option to switch to a Demand tariff with our market-offer solar

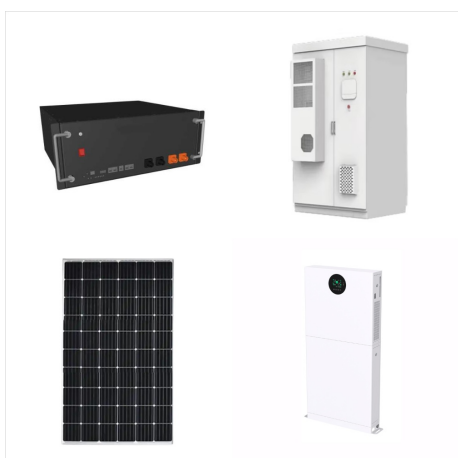
ALINTA ENERGY SOLAR FEED IN TARIFF



On this page we've assembled all of the solar feed in tariffs to make it easy for you to find the best solar feed in tariffs for you. *Energy providers are only noted in the list if they do not require that you purchase your solar power system with them. Max Feed-in Tariff (kWh) AGL: 5c: 10c (for first 14kWh/day, 5c/kWh thereafter



The solar feed in tariffs for Alinta residential plans in postcode 3000 on the Citipower network are all 4.9 c/kWh. The plan with the highest solar feed in tariff is SelectSaver - Two Period Time of Use + CL, with a feed in rate of 4.9 c/kWh.



History of solar feed-in tariffs in Victoria. The Premium Solar Feed-in Tariff was introduced on 1st of November 2009 in Victoria offering residential a rate of 60 c/kWh for exported solar energy. This program closed to new applicants on the 29th of December 2011. Participants of this scheme will receive the premium rate until 2024.

ALINTA ENERGY SOLAR FEED IN TARIFF



Does Alinta Energy offer competitive solar feed-in tariff rates? Yes, some of the feed-in tariff rates on offer from Alinta compare very reasonably with other retailers, for example, it is offering 8c/kWh in SA and QLD, and 6.7c/kWh in NSW and VIC, current as of August 2023.



? Alinta's multi-billion dollar Oven Mountain pumped hydro project is one of a number jockeying for position in Australia's main grid, as the focus turns to longer duration storage to ???



History of feed-in tariffs in SA. There used to be a minimum guaranteed feed-in tariff at a generous 44c/kWh, which was in place up until 30 September 2011. This was at the time a big motivational driver for consumers to switch to solar.. Then in 2012, ESCOSA released a draft determination for a transitional solar feed-in tariff of 23c/kWh for SA residents who applied ???

ALINTA ENERGY SOLAR FEED IN TARIFF



Solar Electricity Credit = Market Solar Feed-in Tariff
x Solar Electricity Supplied 6.3 If we have been
unable to calculate your Solar Electricity Supplied
for a relevant period based on a reading of your
Meter (other than as a result of our negligence or
wilful misconduct) your Solar Electricity Supplied for
that period will be zero unless



Origin Energy Feed-in Tariffs SA. Origin Energy's
solar plans offer some decent feed-in tariffs in South
Australia, but to achieve the best FiT from Origin
you'll need to have your solar panels installed with
the retailer and choose a system under 7kW. Doing
so means a rate of 20c/kWh is up for grabs,
otherwise you'll have to settle for a



Your solar feed-in tariff in Victoria will be decreasing
from 6.7 cents per kWh to 3.3 cents per kWh on 1
August 2024 for new and existing customers on a
market offer. The decrease is in line with the
minimum feed-in tariff as set by the ???