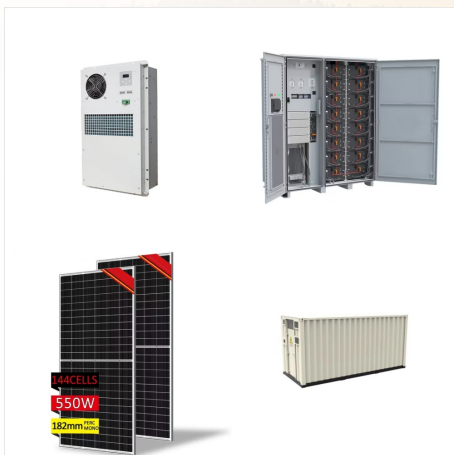




allen & heath system 8 (mark I) for sale. i have one for sale in the UK if anyones interested? Share Reply Quote. 11th April 2010 | Show parent #16. Only gripe is the power supply buzzes but it's a minor thing. Seems to handle everything. Nothing's failed yet (since servicing) and I got all the VU bulbs turned off cos



The Xone:464, like the Wizard3 series can use the MPS12 external backup supply. Supplied with cable. Part no. Description 003-389 CABLE ASSY DC MPS12 MINI 5P FEM-TAILS. Please check with your local dealer or distribution partner for pricing and availability.

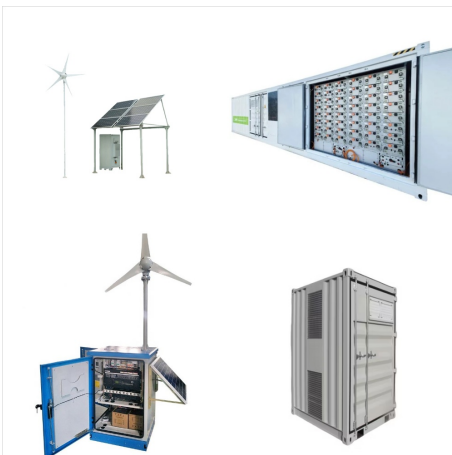


I also had no success finding a backup power supply from AH distributors in NL. I've ordered your suggestion now, A Suggestion for Allen & Heath: Please make this spare part easily available with some shops. Thank you ???? . 2024/06/21 at 1:11 pm #123305. Anonymous. Inactive. Come on guys, any 12 Volt, 5 Amp power supply with center

ALLEN HEATH SYSTEM 8 POWER SUPPLY



Excellent working condition Original power supply works perfectly 24 input channels, which feeds into 8 groups, and then 16 tape returns. Allen & Heath AH-AB-168 48kHz Portable AudioRack - 16in / 8out 48kHz Expander Bundle w/ 8-Pack Pig Hog PHM10 8mm XLR Microphone Cable and Liquid Audio Polishing Cloth Allen & Heath System 8 2416 1970s



Allen and Heath System 8 16 channel mixer. Vintage board, recently cleaned refurbished power supply.works great. Allen and Heath System 8 16 channel mixer. Vintage board, recently cleaned refurbished power supply.works great. Up to 80% off Early Black Friday starts now Shop the sales.



For Sale: Allen & Heath System 8 Mk3 Studio Production Console This was one of the most common consoles to find in small studios in the 70"s, 80"s and 90"s. They were everywhere, and for good reason: they were reliable, passed clean ???

ALLEN HEATH SYSTEM 8 POWER SUPPLY



Up to 4% cash back? It offers 24 input channels, which feeds into 8 groups, and then 16 tape returns. The final mix goes to two right/left stereo channels. It has both XLR and 1/4" inputs, ???



Allen & Heath System 8 Mk1/2 recap and mods. Thread starter Lasselakken; Start date Oct 15, circuit the resulting current should cause the resistor to fail open circuit and give a degree of protection to the power supply and pcb. The applicability of this obviously depends on the power arrangements. For this protection the resistors should

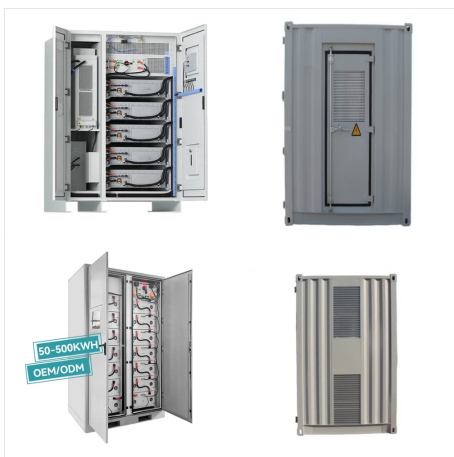


Qu Mixer Reference Guide 16 AP9372 iss.8 6. Connecting dSNAKE Remote Audio The Qu mixer provides local sockets on its rear panel for all audio inputs and outputs. It can also work with remote audio by connecting over a single cable "digital snake" to an Allen & Heath AudioRack, or to the Allen & Heath ME Personal Mixing System.

ALLEN HEATH SYSTEM 8 POWER SUPPLY



Hi guys, I'm new to the forum and I'm wondering if anyone can help with my search for a way to power my Allen heath mixer. Its a system 8, 24 channels 16 tape returns. It has +15-15v for power and two ground poles aswell as a 48v pole for the phantom. As I dont have a power supply, Could I purchase a DC power supply online and add a ground wire to the plug?



For sale is a vintage analog Allen Heath System 8 2416 mixing and recording console. It was a very popular item when it came out with state-of-the-art features and a great warm and fat sound that will make your mix stand out with tons of definition. The power supply (not included) powers the Phantom Power inputs for the mics. Per the age of

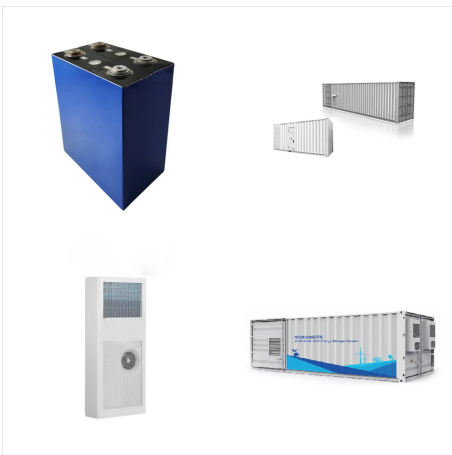


Up to4%cash back? Allen & Heath System 8 24-channel mixer with power supply. Good sounding mic pres with nice EQs. The mixer has been in storage for the past five years. Four ???

ALLEN HEATH SYSTEM 8 POWER SUPPLY



Allen & Heath Limited Kernick Industrial Estate
Penryn, Cornwall, TR10 9LU, UK It shall have a
built in power supply accepting AC mains voltages
of 100-240V, 50/60 Hz, 70W max via an Issue 2 3
Allen & Heath Ltd System Specification Inputs
Outputs XLR Mic/Line Inputs Balanced XLR Outputs
Balanced,



I plan to do some recapping and maybe a few mods
on an Allen & Heath System 8 mixer. My mixer is a
Mk1, but here I have been using the Mk2
schematics since they are mostly the same. Old
LEDs are inefficient and require more current to light
up, and that current unnecessarily loads the power
supply. Reply. Reactions: Lasselakken. IBarfoot



using the AB168 with your system. Refer to the
Allen & Heath web site for more information and
suitable Cat5 cables. The AB168 can be operated
horizontally with the connectors facing upward fuse
for the built-in universal voltage power supply unit.
This accepts worldwide voltages from 100 to 240V
AC 50/60Hz. Check that you

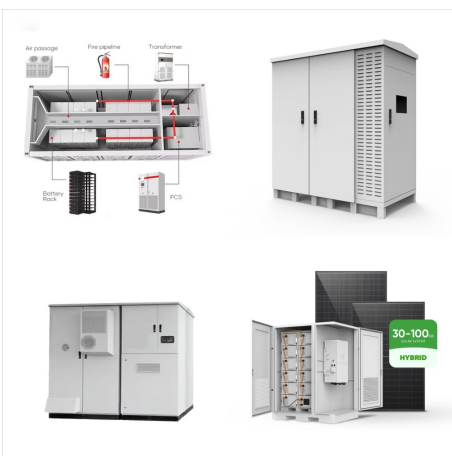
ALLEN HEATH SYSTEM 8 POWER SUPPLY



The external power supply can handle a fully expanded 32???channel system and does not need fan cooling, which keeps things nice and quiet. As it comes, the desk can sync to the outside world via MTC (MIDI Time Code) or MIDI Clock with SPPs (Song Position Pointers), though a SMPTE hardware option is available for around ?180 if preferred.



It would seem that the blue light is a "power supply good" indicator. If it is flashing that would indicate a problem, sort of like a "check engine" light. Please let us know how A& H resolves this along with possible causes if known.



Please use an external 12v power supply to verify that the LEDlamp is working correctly. The power for the LEDlamp comes from the Audio board PCB and is 10V DC. It has been known for the screw on the socket to become loose, this screw provides the grounding, tightening this screw will resolve the problem.

ALLEN HEATH SYSTEM 8 POWER SUPPLY



Audio professionals in need of a portable and rugged Dante input interface will appreciate the Allen & Heath DT20-X, a cost-effective, compact 48/96 kHz Dante interface enabling two combo XLR-1/4" mic/line inputs with 48V phantom power, ideal for a variety of fixed installation and AV / hire / portable applications. The DT20-X is designed to be used with any ???



The MPS16 from Allen & Heath is the touring grade power supply for dLive S Class Surfaces and MixRacks, and the DX32 modular expander. Two MPS16 supplies can be fitted to an S Class Surface, MixRack or DX32 expander to provide dual redundancy plus the ability to "hot-swap" supplies during use with no interruption to the audio.



Choosing and Using an Uninterruptible Power Supply (UPS) When choosing a UPS for use with your console, it should be of the pure sine wave variety, and have a output distortion of 1% or ???

ALLEN HEATH SYSTEM 8 POWER SUPPLY



Allen & Heath; Xone; 23 & 23C; Articles in this section Xone:23/23C RIAA & Line level mods; Xone:23C. No record out or FX Return if using DVS; Xone:23. Xone:23C. PSU; The switched-mode universal power supply will work anywhere in the world, all you will need is a mains lead to fit your local supply. Was this article helpful? Yes No.



Allen & heath rack mount power supply user guide (10 pages) Power Supply ALLEN & HEATH MPS12 User Manual. Console power supply (8 pages) Finally, some consideration should be given to the earthing arrangement of the system, at the centre of which is the console and the RPS11. The console chassis is earthed, to the mains earth, via the power



1 Allen and heath mixing/sound deskA very well looked after Vintage analog Allen Heath System 8 2416 mixing and recording console. It was a very popular item when it came out with state-of-the-art features and a great warm and fat sound that will ???

ALLEN HEATH SYSTEM 8 POWER SUPPLY



The unit shall have a modular power supply accepting AC mains voltages of 100~240V, 50/60 Hz, 300W max via an earthed 3-pin IEC male connector. A rocker switch shall be provided near the mains inlet to isolate the mixer from the incoming mains supply. The unit shall also provide the option for a second, hot-swappable, redundant power supply. This



The RPS9 Power supply is provided with the GL3300 to convert the AC mains voltage to the regulated positive and negative DC voltages required to power the console. It also supplies the +48V DC phantom power voltage for use with certain microphones. It connects to the console by means of a 2.5 metre DC power cable fitted with a locking 5 pin XLR plug.



Buy the Allen & Heath AH-MPS-16 Redundant Hot Swappable Power Supply Unit. Free shipping, great customer service, free tech support. in at only 1.27kg the MPS16 is lightweight enough for two to be used in the DM MixRack of a compact dLive Wings system providing additional peace of mind without significantly adding to the weight of the system.