

Where can I install the RTK reference station?

The solar power module powering the RTK Reference Station allows for its installation in any outdoor location within the yard, eliminating the need to consider power source placement and dealing with extension cords. This greatly enhances the convenience and flexibility of RTK Base Station installation.

Do I need an adapter cable for the RTK reference station?

The adapter cable need to be bought separately and will be available to buy in June 2024. The solar power module powering the RTK Reference Station allows for its installation in any outdoor location within the yard, eliminating the need to consider power source placement and dealing with extension cords.

How long does a RTK base station last?

This greatly enhances the convenience and flexibility of RTK Base Station installation. With a single full charge, the RTK Base Station can provide continuous power for up to 14 days, ensuring stable power supply even during cloudy and rainy seasons.

How many solar panels does Ta'u have?

In 2016, the founders of Maui, Hawaii-based company Mana Pacific helped design and implement Ta'u's solar-energy microgrid composed of over 5,300 solar panels. This vast solar farm amounts to 1.4 megawatts of power generation capacity.



RTK Extension Cable 32.8 ft. (10 meters) is designed to allow RTK reference stations to be placed in locations other than charging stations, such as on rooftops or walls. Compatible with the ???

AMERICAN SAMOA SOLAR PANEL FOR RTK REFERENCE STATION



I got a: EF ECOFLOW Portable Power Station RIVER 2, 256Wh And a 200W panel for it. I will install that in my shed in the spring. I did a test run at the end of the season it powered the mower and RTK for a test mow with a recharge cycle.



Le panneau solaire qui alimente la station de r?f?rence RTK peut ?tre install? dans n"importe quel emplacement ext?rieur sans avoir ? se soucier de l'emplacement de la source d'alimentation et ???



World first solar panel with its own energy storage battery, connected to MAMMOTION RTK station for direct power supply. The built-in battery makes installation simple and eliminates the need for wiring. Compatible with LUBA 1 ???

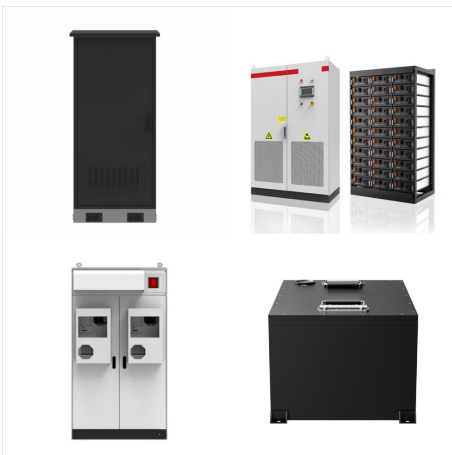
AMERICAN SAMOA SOLAR PANEL FOR RTK REFERENCE STATION



The RTK Extension Cable (10m) is designed to allow RTK reference stations to be placed in locations other than charging stations, compatible with the LUBA 2/ YUKA Series Robot Lawn Mower. Solar Panel for RTK Reference Station ???



Alimentez votre station RTK avec notre panneau solaire de 16 W, compatible avec la s?rie LUBA 1 AWD. LUBA2 AWD 10 000 With SOLAR PANEL on 8000 sqm Lawn. J'ai install? le ???



Das Panel ist passend f?r den Rasenroboter LUBA 1 AWD Serie und LUBA 2 AWD Serie und YUKA Serie. (F?r LUBA 1 AWD ist ein einfaches Adapterkabel f?r die Kompatibilit?t erforderlich. Das Adapterkabel muss separat gekauft werden ???

AMERICAN SAMOA SOLAR PANEL FOR RTK REFERENCE STATION



The solar power module powering the RTK Reference Station allows for its installation in any outdoor location within the yard, eliminating the need to consider power source placement and dealing with extension cords. ???

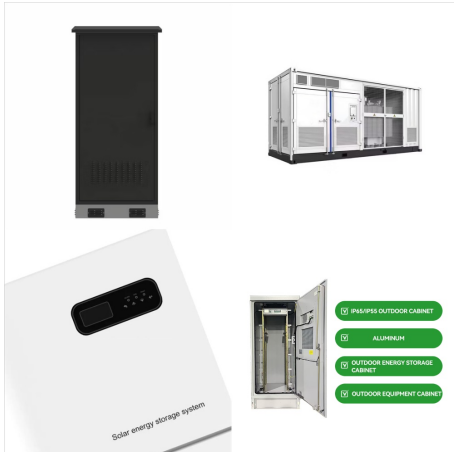


Die RTK-Basisstation bietet stabile und pr?zise Positionierung f?r LUBA 2 AWD-Rasenm?her, wodurch eine genaue Navigation gew?hrleistet wird. Ihre IPX7-Wasserdichtigkeit garantiert ???



The RTK Reference Station Power Adapter is designed to provide power to RTK reference stations that are placed in locations other than charging stations, such as on rooftops or walls. Solar Panel for RTK Reference Station Sale price ???

AMERICAN SAMOA SOLAR PANEL FOR RTK REFERENCE STATION



Solar Panel for RTK Reference Station Sale price
?329.00 + Quick add. Battery for YUKA Series Sale
price ?199.00 + Quick add. Charging Station Power
Supply for YUKA Series Sale price ???