



Get everything you need for the lithium-ion battery cell Ampace 21700A: Extensive measurement data in the total operation regime, a high-precision, physical battery model with global validity, and a teardown report ???



5 ? In August 2023, Ampace's independently developed JP40 product marked a milestone by achieving large-scale mass production of 21700 cylindrical lithium batteries for the first time ???



At the heart of this push is Ampace, a globally recognized leader in lithium-ion battery technology, which has made waves at RE+ 2024 with the launch of its UniC Series. This new line of energy storage systems promises ???

AMPACE BATTERY SAINT BARTHÃ©LEMY



As a joint venture between CATL and ATL, Ampace focuses on advanced lithium-ion battery business, covering the R& D, production, sales and services in three major fields, namely Energy Storage Systems, Micro Electric Vehicles and Power Batteries.



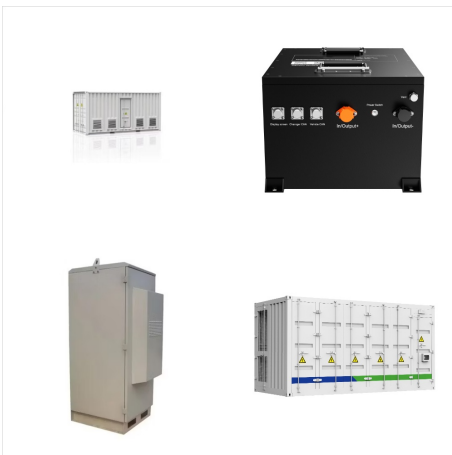
Get everything you need for the lithium-ion battery cell Ampace 21700A: Extensive measurement data in the total operation regime, a high-precision, physical battery model with global validity, and a teardown report that contains all details about materials and microstructures.



A joint venture between CATL and ATL, Ampace's core focus revolves around the advanced lithium-ion battery business, covering its entire lifecycle. This includes R& D, production, sales and services in three major ???



As a joint venture between ATL and CATL, Ampace focuses on advanced lithium-ion battery business, covering the R& D, production, sales and services in three major fields, namely Energy Storage Systems, Micro Electric Vehicles and Power Batteries. Ampace is known with world class R& D and manufacturing of a complete chain Li ion battery products a

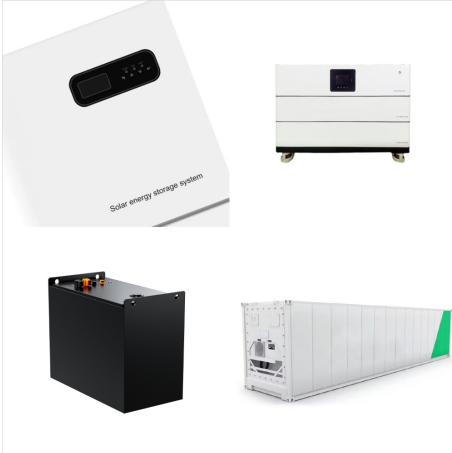


A joint venture between CATL and ATL, Ampace's core focus revolves around the advanced lithium-ion battery business, covering its entire lifecycle. This includes R& D, production, sales and services in three major fields ??? Energy Storage Systems, Micro Electric Vehicles and Power Batteries.



The facility, named Ampace C5, features full-temperature range operations that have no cooling requirement, which the company said will enable a 46 percent cost reduction in 10 years for users while remaining reliable.

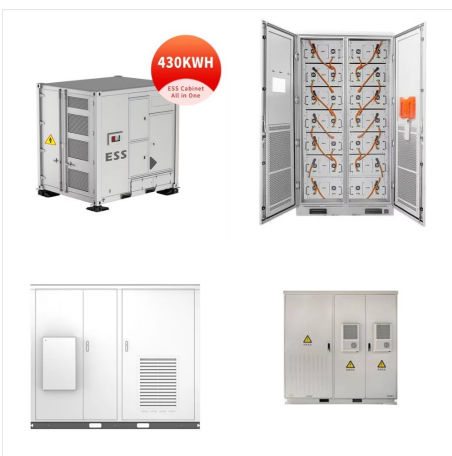
AMPACE BATTERY SAINT BARTHÉLEMY



Ampace, a spin-off of the world's largest battery manufacturer Contemporary Amperex Technology Limited (CATL), is betting on a boom in home energy storage systems and the "batterification



Ampace's commitment to adhering to the latest EU battery regulations (EU)2023/1542 is evident in its stringent safety standards, which extend from the module level to the cell level, incorporating advanced ???



At the heart of this push is Ampace, a globally recognized leader in lithium-ion battery technology, which has made waves at RE+ 2024 with the launch of its UniC Series. This new line of energy storage systems promises to redefine industry standards with its cutting-edge design, energy efficiency, and sustainability features.



5 ? In August 2023, Ampace's independently developed JP40 product marked a milestone by achieving large-scale mass production of 21700 cylindrical lithium batteries for the first time globally



Ampace's commitment to adhering to the latest EU battery regulations (EU)2023/1542 is evident in its stringent safety standards, which extend from the module level to the cell level, incorporating advanced protective designs to ???