



This adapter lead enables the DC solar charging socket on any solar ready, Brass Monkey Fridge, to be connected to an Anderson power network via the 50 Amp Anderson Plug. Charging will take place along with other equipment within the network. The adapter is ideal for use with existing DC power/charging networks, avoiding the need for the



???Geosiry Twin Wire Solar Panel Extension Cable
 ??? 20Ft 10AWG(6mm?) Solar Extension Cable with Female and Male Connector, Solar Panel Wire Adapter for Home, Shop and RV Solar Panels (10AWG 20FT) ???Vemote 10AWG Solar Panel Cable Connector Anderson Adapter, Compatible with MC4, Goal Zero Yeti, Portable Solar Generator Power ???



Product Specifications: SolarEnz 10AWG Solar Connectors to Anderson Adapter Compatible with Anderson Power Pole Solar Panel Extension Cable for Goal Zero Yeti Portable Solar Generator Power Station, RV Perfectly Compatible with Portable Power Station and Freely Assembleable to GZ Port 100W Solar Panels and Jc Accessories Length? 1/4 ?50CM/17.7In 10AWG Cable Heavy ???

ANDERSON PLUG TO SOLAR PANEL



Shop high current anderson plugs, connectors & kits at Jaycar. Click & Collect today or choose free delivery on selected online orders over \$99. optimal for sophisticated applications like trailer electronic stability control systems or solar panel connections. Dependable Anderson Plug Connectors for All Power Applications. For reliable



Anderson Style Plug to a PV Solar Panel Plug Adaptor provides a quick and easy solution for connecting your battery up to solar panels. Cable: 8AWG. Anderson Plug: 50AMP. Length (cable): 30cm. Quick and easy for 12V setups; Creates a PV Solar Plug connection to Anderson Style plug; Comes ready to use, no wiring required

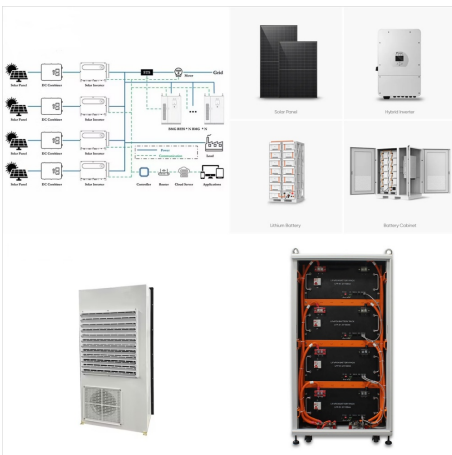


And then he said The screenshot mentioned is Anderson port to MC4 port adapter. For example, our machine only support MC4 connectors solar panel, but your solar panel is Anderson, then, you can buy the adapter to connect Anderson port to your Anderson solar panel and MC4 port to Bluetii machine to achieve connect together. I did not understand

ANDERSON PLUG TO SOLAR PANEL



10 metre lead with Anderson plug on each end. Perfect for connecting and disconnecting quickly and easily. This extension cable has larger gauge wire for the longer run with the Anderson connectors at both ends so its as simple as plugging in to your solar kit. Solar Extension Cable Anderson to Anderson Connector 10m Kit Solar Panel Regular



Anderson plugs are fast becoming the norm on camper trailer 12V systems but are they enough? These are 4 aspects you need to know! 1300 667 868; Find a Dealer; But with the addition of some quality solar panels, you can replenish your power usage while the rig is stationary. There are four different types of solar panels, and they can be



MJPOWER 10Ft Jackery Solar Extension Cable
14AWG Anderson Connector Plug DC Solar Panel
Extension Cord Connect Jackery SolarSaga
100W/100X Solar Panel to Jackery Explorer 1000
Portable Power Station 4.8 out of 5 stars 10

ANDERSON PLUG TO SOLAR PANEL



The 10m Anderson??? to Anderson??? Cable connects the Solar panel to Solar regulator. It provides the option to increase the distance from the solar panel to the regulator up to 10m. These high quality Anderson??? plugs are simple and fast to connect with no screw terminals and no risk of poor connections from frayed wires or loose



Solar is a great example of why you should use Red and Grey Anderson plugs. When using a Power Easy DC25 with the Redarc BCDC Charger we always fit a red Anderson plug on the Solar input. To match we also fit red Anderson plugs to the solar panels. Your solar panel when not using a regulator runs up to 21V, if you connect directly to a battery



Next, plug the solar panel charging output port of the connector into the DC input port of the Jackery Explorer 2000 Pro Portable Power Station. Then, you can plug the solar panel charging input port of the connector into all the Jackery SolarSaga 200W solar panels. The change-over switch helps you change two to three solar panels in series.

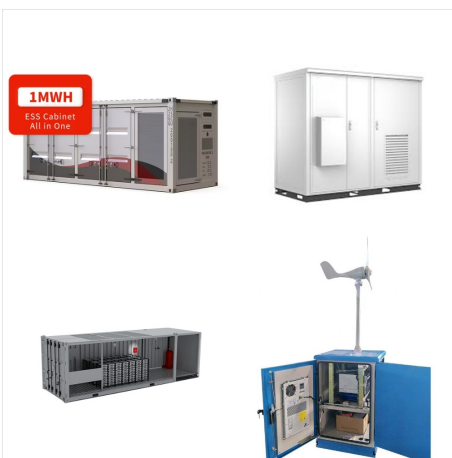
ANDERSON PLUG TO SOLAR PANEL



If extending the solar panel/s over a long distance you can use our Alvolta genuine Anderson extension leads which comes in 3 metre, 5 metre and 8 metre options with 6mm² to eliminate voltage drop across an extended distance. The 4mm² cable is also tinned copper which makes it perfect for solar panels, caravan, camping, marine, dual battery



Anderson plugs are engineered to meet the demanding needs of power distribution systems in applications like solar power, automotive, industrial machinery, marine vessels, and more. Their flexibility and durability make them a preferred choice, especially in situations requiring high current transmission or frequent connections and disconnections.



With more 4WD Tourers and caravanners using solar panels as a power source, the use of the Anderson style heavy-duty connector is becoming an increasingly popular way to connect batteries (via a regulator) to solar panels to top-up charge.

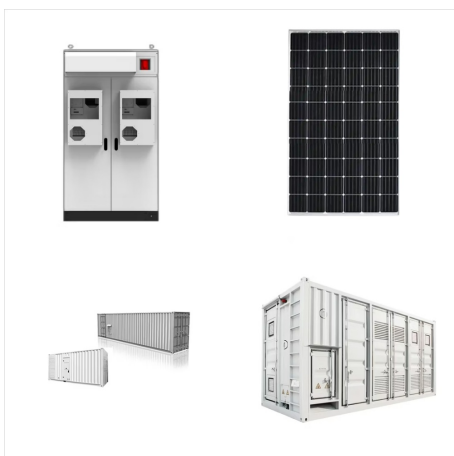
ANDERSON PLUG TO SOLAR PANEL



The 12" Anderson??? Series Cable is used to connect multiple solar panels together in Series, increasing your total panel voltage. set up is easy. These high quality Anderson??? plugs are simple and fast to connect with no screw terminals and no risk of poor connections from frayed wires or loose terminals ??? just plug and play! View the



My solar blanket has Anderson Plug Connections and not the MC4 connectors. The ac180 comes with a MC4 solar cable. The "Standard" solar cable connector type would be the mc4 connectors, which is what you find on all of bluetis solar panels (as well as 99% of both residential and other panels on the market) I feel that the companies

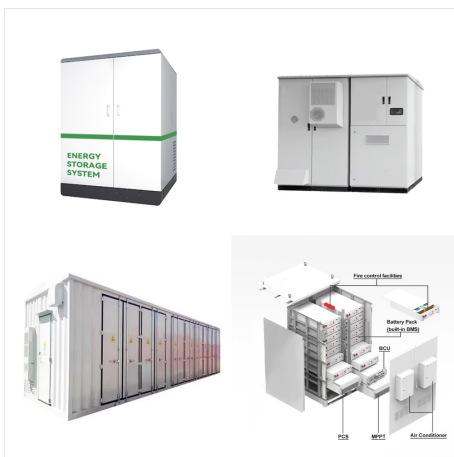


Learn how to connect solar panels to Jackery power stations. Discover compatible models, input limits, and setup tips for efficient solar charging. because it comes with a parallel adapter that takes two 8mm connectors and turns it into one Anderson connector, and plugs into the Explorer 1000.

ANDERSON PLUG TO SOLAR PANEL



High Current connectors one end (50A), MC4 Solar PV connectors on the other end. 4mm² conductor 30 amp capacity, twin sheath high quality cable. Ideal for connecting a High Current connector from a solar panel to a PV load. Comes with grommets on each side for straightforward and neater installations



Amazon : MJPOWER Anderson-to-8mm Extension Cable 10FT/3m 14AWG Wire 8mm DC Power Plug Adapter for Solar Panel RV Goal Zero Yeti Jackery, Compatible with Anderson Powerpole : Patio, Lawn & Garden. ????????What You Get????You will get 10 feet / 3 Meter Anderson solar panel cable Jackery Extension Cable. Manufacturer 24 months Warranty.24 x 7



The GS-AND conversion cables quickly and easily attach to the leads on the back of your Grape Solar panel. They provide a connection to any Anderson connector inputs (found on many solar generators). This enables Grape Solar panels to be used with a wide variety of 3rd party products. Be sure to check the product specs to ensure compatibility.

ANDERSON PLUG TO SOLAR PANEL



An Anderson plug is easy to install with a few simple tools such as a crimper, screwdriver, and power drill. The wiring work is best done by a registered auto-electrician. The plug itself costs less than A\$20. The wiring and installation work can cost up to \$200 depending on the vehicle.



? Festoon Light. 1PC 50AMP ANDERSON PLUG TO MC4 SOLAR PANEL ADAPTOR CABLE. Cable length: 30cm. 1x 50A Anderson plug to MC4 Solar Panel Cable. 50A Anderson Plug to MC4 Connectors. Compatible with MC4 connector.



I want to add an external solar panel and plug it into the Anderson plug, will this work? Setec Customer Support February 28, 2023 05:13 Updated. If your battery management system has an in-built solar regulator, unregulated solar panels should be connected directly into the unit's solar input terminals. There is no need to install an external

ANDERSON PLUG TO SOLAR PANEL



When used for vehicle-to-trailer connections, an Anderson plug is a safer, more convenient alternative to a 12-pin plug. It is safer because it is specifically designed to handle a continuous charging load. It is more convenient because it provides a more secure connection between a vehicle and a trailer in tow.



Get more out of your solar panels with our range of accessories. Controllers, connectors and more. Order online or in store at Repco. false. false. Redarc Anderson Plug to Anderson Plug Solar Cable 10M - SRC0019. Bazaarvoice SAP Hybris Integration Version 2.8.0. \$147. Check Availability. Fitment Notes: