

What makes Antarctica a good place to store energy?

A room full of classic lead-acid batteries enables the station to store energy for times when demands exceeds the current energy production. While the renewable energy systems that power the station are reliable and continuously checked, even in the harsh conditions of Antarctica, two generators were installed for security and backup.

Why did Antarctica have two generators?

While the renewable energy systems that power the station are reliable and continuously checked, even in the harsh conditions of Antarctica, two generators were installed for security and backup. They are also used to provide scheduled full load cycles which are part of the battery bank life performance.

Can renewable electricity be used in Antarctica?

Several renewable electricity generation technologies that have proven effective for use in the Antarctic environment are described, as well as those that are currently in use. Finally, the paper summarizes the major lessons learned to support future projects and close the knowledge gap.

How do wind and solar power contribute to the Antarctic Program?

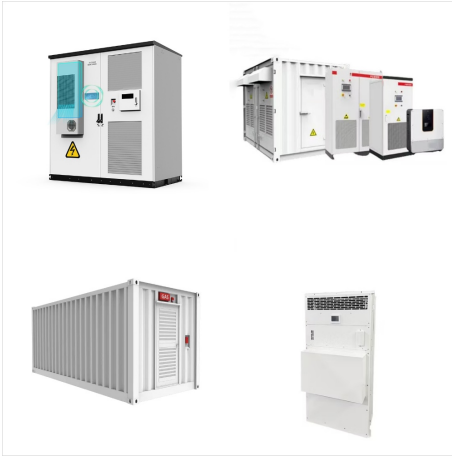
Today, wind power and solar power both contribute to the Australian Antarctic Program's energy needs. This content was last updated 4 years ago 16 November 2020. Harnessing natural energies can fuel our Antarctic stations and reduce our dependence on fossil fuels.

Can solar energy be used in Antarctica?

Solar energy has also become prevalent in Antarctic operations in the last decade. This type of energy was mainly introduced either to complement wind energy or in summer bases, summer shelters and on expedition equipment that can be powered by solar energy (radios, very-high-frequency (VHF) repeaters).

Can wind power be used in Antarctica?

increased efficiency of station operations. Sir Douglas Mawson saw the potential for wind-generated power in Antarctica, and ANARE has continued to explore this interest. Experiments at Heard Island, and later at Mawson during the 1960s, demonstrated the potential of wind power.



Antarctic polar cruise fleet. Small ships make the difference. The key to making the most of your trip to Antarctica is to ensure maximum shore and Zodiac time. Ships with more than 200 passengers often find their landing sites are limited, and the logistics of disembarking the ship's complement into Zodiacs can be slow.



The geography of Antarctica is dominated by its south polar location and, thus, by ice. The Antarctic continent, located in the Earth's southern hemisphere, is centered asymmetrically around the South Pole and largely south of the Antarctic Circle is washed by the Southern (or Antarctic) Ocean or, depending on definition, the southern Pacific, Atlantic, and Indian Oceans.



18 May, 2024 News stories Comprehensive digital maps of Antarctica are now available to all, following the latest update of the Antarctic Digital Database. A new map viewer brings together all of the Antarctic Digital Database datasets, ???



Page 1 POWERWARE 9120 (R) User's Guide 700 VA - 3000VA Page 2 POWERWARE 9120 (R) 700, 1000, 1500, 2000 & 3000VA User's Guide Important Notice The UPS ground (earth) conductor carries leakage current from the loads in addition to any leakage current generated by the UPS. This UPS generates no more than 1 mA of current.



Ross Island, Antarctica is set to receive three new state-of-the-art wind turbines that will power the future Scott Base with more than 90% renewable energy. Three EWT turbines (type DW54X-1MW) have been selected to replace the ???



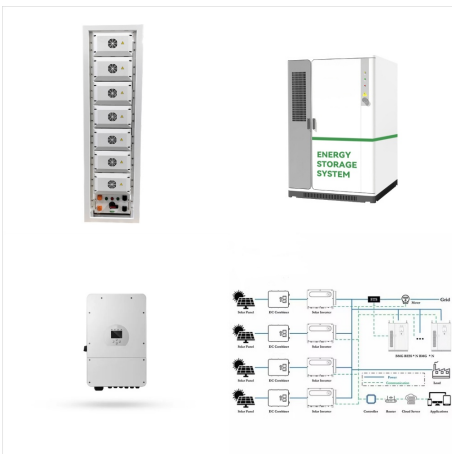
Demonstrated in this review is how quickly power generating technologies have developed in less than 100 years on the continent. Generation has progressed from the heroic age in Antarctica ???



Version 1 - Antarctica The Last Continent - click to open or download 10.1Mb - 64 slides - Suitable for students from about age 13 to 16. Alternate file types, open or download: .pdf .mp4 Version 2 - Antarctica The Last Continent - click to open ???



This paper presents an overview of current electricity generation and consumption patterns in the Antarctic. Based on both previously published and newly collected data, the paper describes the current status of renewable ???



Composite satellite image of Antarctica (2002)
Apollo 4 photograph with Antarctica at top, 1967
Antarctica (/ ae n ?? t ?????r k t ?? k ?? / ???) [note 1] is Earth's southernmost and least-populated continent. Situated almost entirely south of the Antarctic Circle and surrounded by the Southern Ocean (also known as the Antarctic Ocean), it contains the geographic South Pole.



Antarctic wildlife storymap. To learn more about Antarctic wildlife, please visit the Antarctic Wildlife Storymap collection! In this free storymap, users can interact with satellite imagery, learn about penguin colonies in Antarctica, and learn how Antarctic food webs work. Further reading. Seals and sealions; WWF: Emperor penguins; Whales of



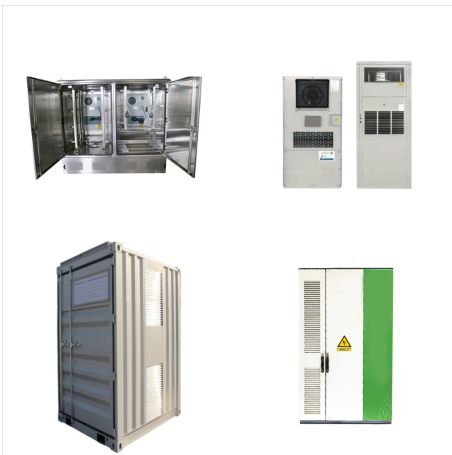
While the renewable energy systems that power the station are reliable and continuously checked, even in the harsh conditions of Antarctica, two generators were installed for security and backup. They are also used to provide ???



Nothofagus fusca, New Zealand. Antarctic flora are a distinct community of vascular plants which evolved millions of years ago on the supercontinent of Gondwana. Presently, species of Antarctica flora reside on several now separated areas of the Southern Hemisphere, including southern South America, southernmost Africa, New Zealand, Australia, and New Caledonia.



Polar Latitudes offers a wide variety of trips to Antarctica, including itineraries to the Antarctic Peninsula, South Georgia, and the Falkland Islands. Activities like citizen science, camping, kayaking, and photography are available on most ???



For early explorers, ground transport on the Antarctic continent was fraught with difficulty and danger. Related links. 1962 Vostok traverse; Previous page. Antarctica's cultural heritage. Next page. Communications. This content was last updated 6 ???



She even earned herself a coveted spot in the Lonely Planet Travel Guide for Antarctica as the only recommended Antarctic agent in Ushuaia. Since then, Antarctica Travels" team has passionately helped people reach the ultimate destination, whether it's Antarctica, the Arctic, or even the Galapagos. You can count on almost 50 years and 270



The Ocean Nova offers a classic Antarctic expedition experience. Designed for intimate and immersive journeys, this nimble and sturdy ship accommodates just 80 guests. Your expedition focuses on discovery, enriched by a close-knit community of fellow travellers. The Ocean Nova's compact size allows access to remote coves, bringing you closer



When choosing which Antarctica destinations to visit, for the quintessential polar experience, venturing to the Antarctic Peninsula is the absolute place to start. The Antarctic Circle. The Antarctic Circle is found at 66 degrees south latitude, and is an intangible line that encircles the entire continent.



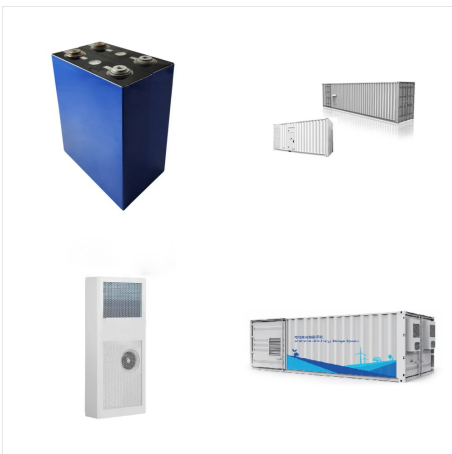
Antarctica's environment has special conditions that make it the windiest continent on Earth. Antarctica is usually surrounded by a belt of low pressure which contains multiple low centres. This is called the "circumpolar trough". But the interior of ???



Antarctica is a land of extremes: it is the coldest and driest continent on Earth and has the highest average elevation. As the fifth largest continent in the world, Antarctica is also the most Southern, overlying the "South Pole". Scarcely touched by humans, the frozen land boasts breathtaking scenery, broken by only a handful of scientific bases and a ???



Antarctica is the Earth's southernmost and the continent with the least people. It is on the South Pole is almost entirely south of the Antarctic Circle. Around Antarctica is the Southern Ocean is the fifth-largest continent in area after Asia, Africa, North America, and South America. [2] About 99% of Antarctica is covered by ice.



Without underplaying the relevance of decarbonizing other Antarctic operations (air cargo, shipping, tourism, fishing), the objective of this paper is to offer data and insights on the deployment of renewable energy to phase out fossil fuels in ???



The Australian Antarctic Division operates webcams at its 4 permanent stations: on the Antarctic continent at Mawson, Casey and Davis, and on sub-Antarctic Macquarie Island. There is also a Nuyina icebreaker webcam.



Antarctica is best known for its charismatic penguins, seals and whales. However, these are only the most visible members of a thriving Antarctic ecosystem, much of which remains largely unseen. Under the water and beneath the ice, a vibrant community of animals found only in Antarctica thrives in cold, oxygen-rich waters. From glass sponges and colossal squid to ???



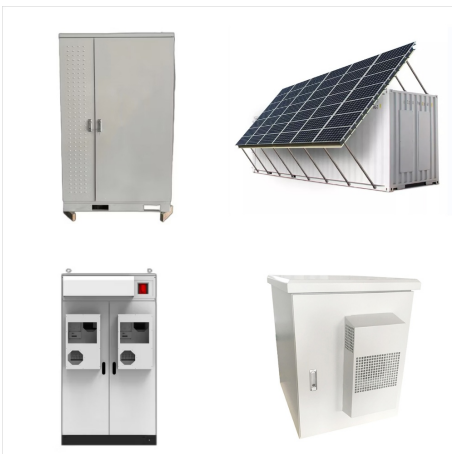
Antarctica's climate is also very windy and dry. Wind speeds vary across the continent and are discussed in Regional climate variation and weather; but the idea that Antarctica is a kind of desert requires some explanation here. The ???



Antarctica21 operates Fly & Cruise Expeditions to Antarctica and Sea Voyages to the Falkland Islands (Islas Malvinas), South Georgia, and Antarctica. Our trips are boutique wilderness adventures taking you to Antarctica and beyond. Enjoy small ship experiences that allow you time to explore our remote destinations.



Cold facts. Antarctica is unique among the continents for being almost totally covered by glacier ice.. Although this ice cover in its entirety is often referred to as a single ice sheet (the Antarctic Ice Sheet), there are in fact two major areas of ice which differ from each other in both their physical characteristics and history: the East and West Antarctic Ice Sheets.



The Antarctic Shrine - Standish Backus Sir Ernest Shackleton's British Antarctic Expedition of 1907 hut at Cape Royds, Ross Island. Units of Task Force 43 may be seen several miles off Cape Royds fighting their way through frozen ???