



Can solar power be installed in the Antarctic?

Temperatures below -89°C, winds over 200km/h, extreme variances in hours of sunlight, with up to 16 hours in the summer and only two during winter, pose tremendous challenges for both research teams and equipment. PV connectors from Stäubli are part of a demanding new field of application: installing solar power in the Antarctic.

How many solar panels are there in Antarctica?

The first Australian solar farm in Antarctica was switched on at Casey research station in March 2019. The system of 105 solar panels, mounted on the northern wall of the 'green store', provides 30 kW of renewable energy into the power grid. That's about 10% of the station's total demand.

Where is the first Australian solar farm in Antarctica?

Home > News and media > 2019 > First Australian solar farm in Antarctica opens at Casey research station  
The first Australian solar farm in Antarctica will be switched on at Casey research station today.

Can solar panels run in Arctic and Antarctica?

In fact, some studies suggest that cooler temperatures can help solar panels run more efficiently. Instead, solar panels rely on solar radiation to produce energy. So, the question isn't whether the Arctic and Antarctica are warm enough, but whether they get enough sun exposure. The fact is that we can use solar panels at the poles.

How much sunlight does Antarctica get a day?

The Antarctic summer sees 24 hours of sunlight a day. This is a valuable resource as renewable energy. The Casey solar panel array installed. A wind deflector (visible down the length of the array on the left side of the building) minimises the effects of high wind speeds during blizzards. Photo: Doreen McCurdy



Discover the future of energy with Sunbeam Solar. Explore our range of solar products including inverters, batteries, panels, cables, mountings, and appliances. Light up your life with clean, home-grown energy. Benefit from our seasoned installers' expertise. Contact us for seamless and efficient solar installations.



The first Australian solar farm in Antarctica will be switched on at Casey research station today. Australian Antarctic Division Director, Mr Kim Ellis, said the system of 105 solar panels, mounted on the northern wall of the ???



Temperatures below  $-89^{\circ}\text{C}$ , winds over 200 km/h, extreme variances in hours of sunlight, with up to 16 hours in the summer and only two during winter, pose tremendous challenges for both research teams and ???



Waarom kiezen voor Sunbeam Luna? Met slechts drie onderdelen het dak op. In 1 keer uit te lijnen. Geïntegreerde potentiaalvereffening Geïntegreerd kabelmanagement . [info@sunbeam.solar](mailto:info@sunbeam.solar) +31 88 - 09 09 900; Homepage; Flat roofs. [sunbeam.solar/en/](http://sunbeam.solar/en/)



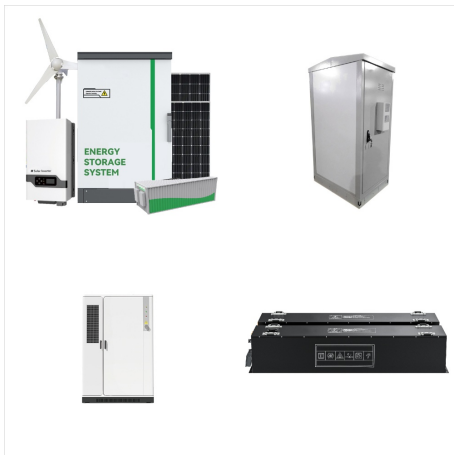
The Environmental Choice. A 1 kW grid interactive solar system will save roughly 7 tonnes of carbon dioxide per year. If all Australian households switched to solar hot water and renewable energy sources we could reduce Australia's dependency on coal-fired power stations by a full 50%.. The widespread use of non-renewable energy from fossil fuels has resulted in massive ???



The system of 105 solar panels, mounted on the northern wall of the "green store", provides 30 kW of renewable energy into the power grid. That's about 10% of the station's total demand. The panels have been designed to strike a balance ???



5 reviews of SUNBEAM SOLAR "I priced three different companies before making the decision to go with Sunbeam Solar. I really felt that Karen cared about me. She made a point of taking pictures of my fur babies and bringing them ???



Sunbeam Solar has installed roughly 1000 solar systems throughout northern NSW since 1998, with virtually all of them are still 100% operational to this day. Our focus is on quality, integrity, and reliability. Our designs can be customised to suit your home's aesthetic.



Sunbeam produceert duurzame onderconstructies voor zonnepanelen. @ mail ons op [info@sunbeam.solar](mailto:info@sunbeam.solar) of bel: 088 - 09 09 900. Nieuws. Belangrijke data december. Vrijdag 20 december: laatste leverdag ??? Dinsdag 24 december gesloten vanaf 16:00 t/m 1 januari ???



SunBeam SOLAR is a reliable and customer-focused solar company. Their team, including Karen, Nick, James, Alan, Jimmy, and Mark, has been praised for their excellent service and expertise. Customers have commended the company's assistance with battery bank replacement, system installation, and navigating the approval process.



Sunbeam Nova Symmetrical is een symmetrisch ("oost-west") systeem, met twee zonnepanelen per positie onder hoeken van 10 graden. Deze uitvoering levert een nog grotere dakbenutting (kWp/m<sup>2</sup>) en een maximale opbrengst (kWh/jaar), tegen ???



We hebben alles uit de kast gehaald om de installatie van Sunbeam Luna zo makkelijk mogelijk voor je te maken. De assemblage hebben we al voor je gedaan, de uitlijning is zo voor elkaar en kabels werk je eenvoudig weg dankzij de handige kabelklemmen.





info@sunbeam.solar +31 88 - 09 09 900;  
Homepage; Flat roofs. Designs; System;  
Accessories; Projects; Downloads; Calculator;  
Pitched roofs. Introduction; Designs; System; +31  
88 - 09 09 900. Straightforward and easy to install.  
We've done everything in our power to make the  
installation of Sunbeam Luna as easy as possible.  
We've already



Sunbeam BV Kwikstaartlaan 1 N-370 S eist The  
Netherlands 31 (0)30 - 3 00 333 info@sunbeam.solar  
12? 10? 10? 1300 - 1700 mm 2100 - 2300 mm  
paneel + 10 mm paneel + 10 mmL + 10 mm ca 320  
mm Sunbeam product sheet - febr 2021 L + 10 mm  
ca 300 mm L + 10 mm ca 270 mm Algemene  
kenmerken



The online Galileo calculation programme was  
developed to effortlessly draft layouts and determine  
the required components, ballast and price for any  
Sunbeam project. Galileo offers a wealth of  
functionalities, such as drawing panels on aerial  
photos and online support from Sunbeam  
Engineers. The programme also supports the newer  
generations of long(er) solar ???



Sunbeam Solar & Electrical, a prominent solar company with presence all across Australia. With a passionate commitment to harnessing the power of the sun, Sunbeam Solar and Electrical is leading the way in providing sustainable ???



The Tough Black series provides you with the same advantages as the normal Tough series but offers two additional models: the 55W Long Flush and the 114W Flush. For installation, we advise black flexible glue like Sikaflex 295. ??? Double life time expectancy, skid proof surface, dirt repellent, higher transparency. ??? Flush 2021 edition. New cable, 30% flatter and 25% more ???



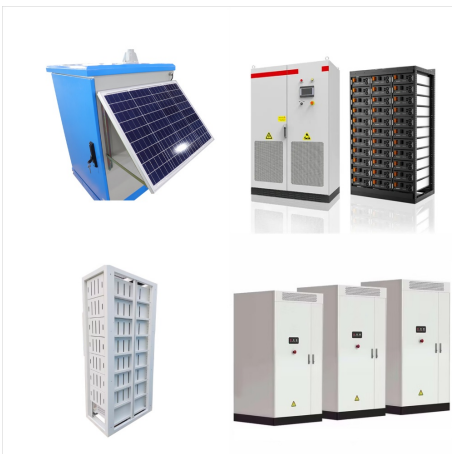
Waarom kiezen voor Sunbeam Luna? Met slechts drie onderdelen het dak op. In ??n keer uit te lijnen. Ge?ntegreerde potentiaalvereffening. Ge?ntegreerd kabelmanagement. info@sunbeam.solar; 088 - 09 09 900; Home; Plat dak ???



Although during summer Antarctica can see 24 hours of sunlight (great for solar power generation), during winter several months can pass without sun, making solar practically useless. Secondly, solar panels have to be ???



Sunbeam Solar & Electrical, a prominent solar company with presence all across Australia. With a passionate commitment to harnessing the power of the sun, Sunbeam Solar and Electrical is leading the way in providing sustainable energy solutions to the residents and businesses of the entire nation. Sunbeam Solar & Electrical is more than just a



Our dealer in Sunbeam, Profinergy worked in the summer of 2016 on a complex project which consisted of laying 4,600 solar panels on nine different buildings of Utrecht University in the Uithof zone. It goes without saying that this project made full use of Sunbeam mounting materials.