



Does Argus Technologies have a manual?

This page intentionally left blank. This instruction manual explains the installation and interconnection of Argus Technologies' Cordex 48-1kW integrated 19" 4RU flush mount shelf system with up to 3000W output power and distribution. To aid the user with installation, frequent reference is made to drawings located at the rear of this manual.

How does Argus work?

All input channels are voltage activated and accept a bipolar (i.e. negative or positive) DC signal directly. Typical Argus systems use the "reset with Hot and trigger with Ground" connection. The digital input is wired in such a way that the Hot is wired directly into one of the input terminals; i.e., negative input for -48V systems.

How do I contact Argus Technologies?

Burnaby, British Columbia. Telephone: 604 436 5900 Fax: 604 436 1233 Argus Technologies reserves the right to make changes to the products and information contained in this document without notice. Printed in Canada. Change part number 877-162-20 to 877-482-20.

Does Argus offer a fuse Distribution Option?

A fuse distribution option is available to provide up to ten GMT fuse positions in two feeds rated at 10A maximum per feed. All Argus products are shipped in rugged, double walled boxes and suspended via solid inserts to minimize shock that may occur during transportation.

Is Argus Technologies responsible for damage caused by improper packaging?

Argus Technologies is not responsible for damage caused by the improper packaging of returned units. Prior to unpacking the equipment, note any damage to the shipping container. Unpack the equipment and inspect the exterior for damage. If any damage is observed contact the carrier immediately.

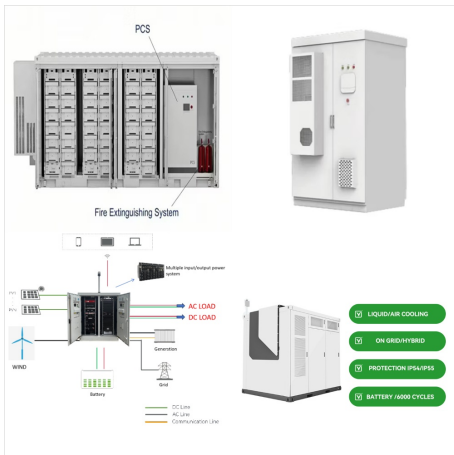
What are the terms of the Argus warranty?

The terms of the warranty are Ex Works (EXW) from Argus' factory service location. Identification marks or serial numbers are removed or altered in any way, invoice is unpaid, or defect is the result of

# ARGUS TECHNOLOGIES DC POWER SYSTEMS



misuse, neglect, improper installation, environmental conditions, non-authorized repair, alteration or accident.



Cordex rectifiers are available in a wide array of power sizes from 250W to 12,000W per module, enabling the most compact and cost-effective power system design. Multiple DC output and AC input options are available to provide an ideal solution for ???



Alpine Power Systems provides DC Plant, Rectifier, and Inverter Maintenance and Repair services nationwide. Eagle Eye Power Solutions. Primax Technologies. Myers Power Products. Vertiv / Emerson NetSure. Emerson Lorain. Emerson Chloride. Emerson Candeco. Tyco / Lucent. Alcatel Lucent. Nortel - Helios. Marconi. Argus. PECO II. The Major



Argus Cordex Rectifier System: Cordex rectifiers bring advanced technology to the DC power industry. Innovative engineering combines the best in efficiency and reliability meeting the power requirements for a variety of system applications. With 19" and 23" shelf, the fan cooled Cordex rectifier has extremely high density providing the

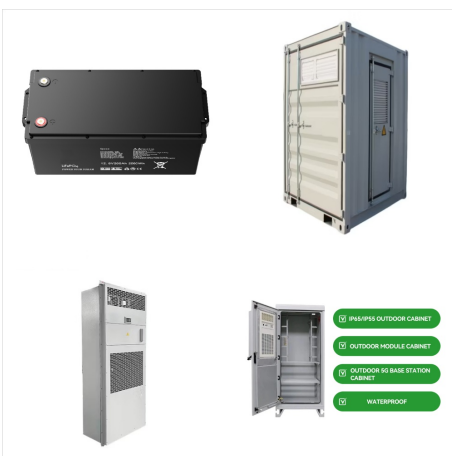
# ARGUS TECHNOLOGIES DC POWER SYSTEMS



systems that can mount on a wall or occupy a single rack space, Alpha's DC power solutions integrate leading-edge power conversion technology and Cordex controllers with distribution options to serve a broad variety of applications. Alpha's shelf systems provide a complete power solution in a rack mount package.



Argus Technologies (member of the Alpha Group) specializes in the design and manufacture of premium quality DC power solutions for the global communications industry. Since 1986, Argus has been recognized as an industry leader in the telephony market, and is leading the way in wireless technology today.



The system utilizes standard Cordex Power System (CXPS) components and is a perfect solution for space constrained applications due to the compact, front access design. Systems are equipped with the CXC-HP system controller for single point control, advanced battery diagnostics, data ogging plus local and remote monitoring, including SNMP alarming.

# ARGUS TECHNOLOGIES DC POWER SYSTEMS



Argus Technologies Ltd. Burnaby, British Columbia.  
Telephone: 604 436 5900 Fax: 604 436 1233 Argus Technologies reserves the right to make changes to the products and information contained in this document without notice. Electrical Safety WARNING Hazardous voltages are present at the input of a power system. The DC output from rectifiers



Alpha Technologies provides the Cable TV/Broadband, Industrial and Renewable Energy industries with the most reliable, technologically advanced and cost-effective powering solutions available. Alpha offers innovative powering solutions that are designed for the future; built to support expansion and provide unlimited opportunity. Widely used in cable television, ???



The Alpha Inverter 2000, by Alpha Technologies, an EnerSys Company, is a standalone DC to AC inverter system for Telecom power applications. The Inverter 2000 features improved efficiency, better over-load performance and a compact design, and is the inverter of choice for a variety of telecom network applications.



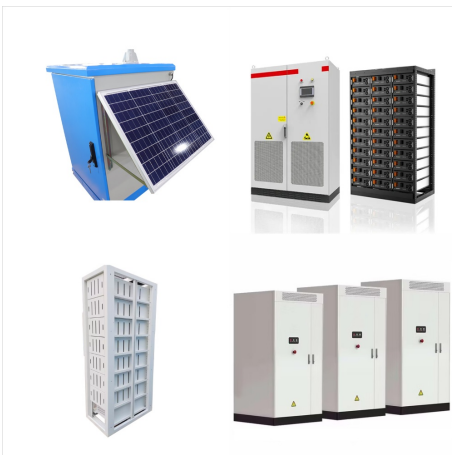
# ARGUS TECHNOLOGIES DC POWER SYSTEMS



DC Output: 1/4-20 x 5/8" studs Signal wiring:  
Terminal blocks 0.14 to 0.75mm<sup>2</sup> Specifications for  
Argus" Cordex 48-1kW 19" Shelf System Continued  
Argus Technologies Ltd. 030-713-B1 Rev A WC  
Power System Minor Alarm (Yellow) Power System  
Major Alarm / Controller Fail (Red)

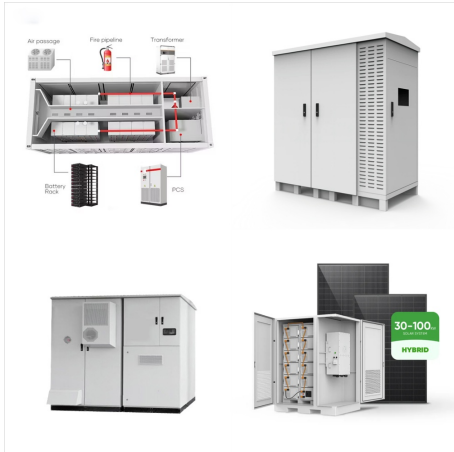


DC Power System Installation Service Offerings:  
Installation of -48V and +24V stand-alone power  
systems. Primax Technologies. Myers Power  
Products. Vertiv / Emerson NetSure. Emerson  
Lorain. Emerson Chloride. Emerson Candeo. Tyco /  
Lucent. Alcatel Lucent. Nortel - Helios. Marconi.  
Argus. PECO II. ISO Certifications.



High efficiency and high temperature operation  
makes the system ideal for harsh outside plant  
enclosure installations. The 19" universal rack  
mount power system accommodates up to four  
Cordex HP 48V, 1.2kW rectifiers, a modular Cordex  
CXCM1 controller, with breaker and GMT Fuse  
distribution in a compact 2RU package.

# ARGUS TECHNOLOGIES DC POWER SYSTEMS



configure a DC power system to grow incrementally with the communications equipment. The Vista Series" modular design lets you easily change power components in and out, upload new software, and program new parameters through the system's user-friendly LCD interface. System capacity is key The complete platform combines an



Slide the front panel out. Disconnect the fan power lead wires (one set per fan) and front panel ribbon cable from the module. Remove the screws that secure the fans to the front panel. PAGE 30. 9 Argus Conventions 9.1 Numbering System Argus Technologies uses an eight-digit drawing number system, which is broken into three blocks.



ARGUS TECHNOLOGIES CORDEX 48-1KW 23" SHELF FOR SYSTEMS UP TO 4000W WITH DISTRIBUTION 1 INTRODUCTION 1.1 Scope of the Manual This instruction manual explains the installation and interconnection of Argus Technologies" Cordex 48-1kW 23" Integrated Shelf System with up to 4000W Output Power and Distribution.

# ARGUS TECHNOLOGIES DC POWER SYSTEMS



Cordex??? supervisory controllers come in a wide array of modular designs for integration into Alpha power systems. Alpha's CXC family of controllers communicates to other power devices in the system via the highly robust Controller Area Network (CAN) protocol, ensuring the reliable operation of all of your power solutions.



Specifications for Argus" Cordex 48-1.2kW 19" 1RU Shelf System w/CXCM1 Argus Technologies Ltd. 030-835-B1 Rev A WC DC Output (bus bars): 7/16" on 1" centers, Specifications for Argus" Cordex 48-1.2kW 19" 1RU Shelf System, Bulk ???



(Specifications subject to change without notice)  
ARGUS TECHNOLOGIES 010-511-B1 Rev A Page 3 of 3 Page 7 US and Canadian markets, to the applicable US and Canadian standards. (1) Argus rectifier and power system products, bearing the aforementioned CSA marks, are certified to CSA C22.2 No. 950 and UL 1950, or CSA/UL 60950.

# ARGUS TECHNOLOGIES DC POWER SYSTEMS



The CXPS-HX 48-2500 Power System is a complete -48Vdc power plant that combines high efficiency rectifiers and flexible distribution options packaged in a single 7-foot box frame. It can be deployed in a distributed architecture requiring higher capacity distribution positions as well as in a centralized framework.



48VDC Cordex HP??? 1.2kW - Cordex  
High-Performance rectifiers make a proven, reliable platform even better, with significant advancements in efficiency and performance. Featuring a compact, fan-cooled design, HP rectifiers open the possibility to wider ranges of applications and immediate Op-Ex/Cap-Ex savings, reducing total cost of ownership and impact on the ???



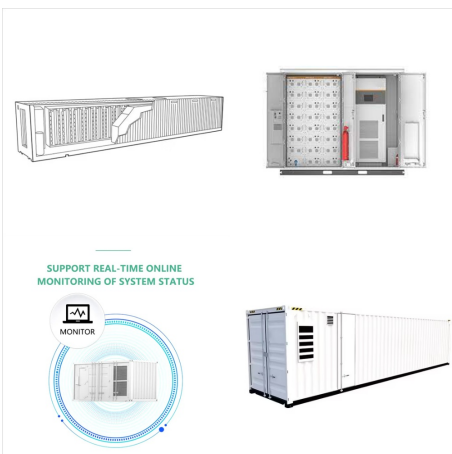
Argus Technologies (Canada) General Information Description. Manufacturer of power systems for computers, cable TV and telecommunications. The company designs and manufactures DC power products for wireless, fiber, broadband, PCS, traditional telephony and customer premise applications, including complete DC power systems, rectifiers, DC-DC converters, DC UPS ???



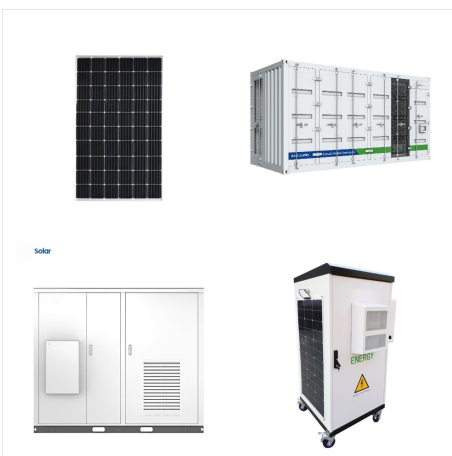
# ARGUS TECHNOLOGIES DC POWER SYSTEMS



Argus Technologies has opened a factory and integration facility in the port town of Santos, Brazil. The 6000 sq. ft. facility will be focusing on product integration, testing, installation and commissioning of indoor and outdoor DC power systems to meet current business demands and further compliment existing services already provided to Argus customers in the Mercosur ???



About Argus Technologies: Argus Technologies was founded in 1994 as a specialist designer and manufacturer of cellular antennas for the mobile telecommunications industry, and is widely recognized as a market leader in delivering innovative antenna solutions for the global mobile telecommunications market. The Sydney-based corporate



The CXC HP controller provides total energy system management and single point of control and monitoring of various power generation and storage devices in critical power applications. Unlike other power system controllers, the CXC HP has been designed to manage today's advanced control and automation requirements as well as for future

# ARGUS TECHNOLOGIES DC POWER SYSTEMS



The system utilizes standard Cordex Power System (CXPS) components and is a perfect solution for space constrained applications due to the compact, front access design. Systems are equipped with the CXC-HP system controller for single point control, advanced battery diagnostics, data logging plus local and remote monitoring, including SNMP alarming.