

Should I charge my Arlo camera before using the solar panel?

: Charge your Arlo camera before using it with the Arlo Solar Panel. The Arlo Solar Panel is meant to keep your camera charged, not to charge it from low to full battery. Ensure your Arlo camera is compatible with the Arlo Solar Panel. Check the solar icons in the Arlo Secure App to determine the charging state.

Why is my Arlo camera not charging?

Ensure your Arlo camera is compatible with the Arlo Solar Panel. Check the solar icons in the Arlo Secure App to determine the charging state. : It is possible that these icons will only display for a few minutes and then revert to gray. : If the battery is too cold or too hot, it will not charge. Unplug the Arlo Solar Panel cable from your camera.

Why is my Arlo solar panel not charging?

: If the battery is too cold or too hot, it will not charge. Unplug the Arlo Solar Panel cable from your camera. Check the condition of the Arlo Solar Panel cable to confirm there are no exposed or damaged wires. Reconnect the Arlo Solar Panel cable to your camera.

How do I fix a non-charging Arlo solar panel?

Here's what to try first to fix a non-charging Arlo solar panel: Make sure you clean your Arlo solar panel and position it towards the sun. Unplug the camera cables. Squeeze the sides of the charging plug to remove it from the solar panel. Reinsert the charging plug into the solar panel. You'll hear a clicking sound if you insert the plug properly.

How does the Arlo solar panel work?

The Arlo Solar Panel is designed to provide trickle charging to keep your camera battery charged, not to charge your camera battery from low to full. Reduce your camera usage for a day or two and note your camera battery level.

How do I charge my Arlo camera?

Ensure the Arlo camera battery is fully inserted and that you are charging it with the Arlo Solar Panel. The Arlo Solar Panel charges the battery, but it cannot power the camera if the battery is not installed. Make sure

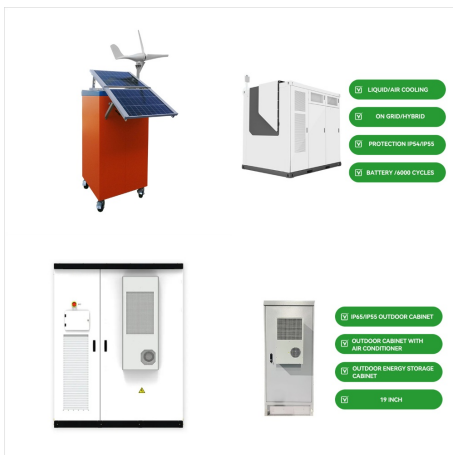
ARLO ESSENTIAL SOLAR PANEL NOT CHARGING



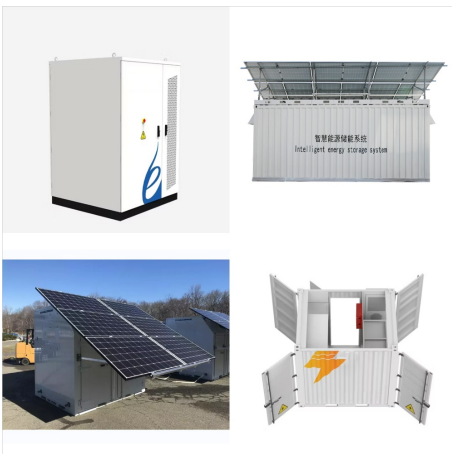
your camera battery is fully charged when you connect the Arlo Solar Panel to your camera.



Arlo solar panel needs to be in an area where it can receive direct sunlight. It will not work as well if it is in an area where there is a shade or if it is behind a glass window. How long does it take for the Arlo solar panel to charge the battery? It usually takes around 2 hours for the solar panel to fully charge the battery.



Do This First to Fix a Non-Charging Arlo Solar Panel. Here's what to try first to fix a non-charging Arlo solar pane: Make sure you clean your Arlo solar panel and position it towards the sun. Unplug the camera cables. Squeeze the sides of the charging plug to remove it from the solar panel. Reinsert the charging plug into the solar panel.



- 1 Pro 4 camera is connected to an Arlo solar panel and it does not charge unless I disconnect solar and reconnect. - 2 Pro 4 cameras are connected to Wasserstein solar panels and they also do not charge unless I disconnect solar and reconnect. - The last 2 points clearly show it is NOT a specific solar panel issue, but a firmware issue.

ARLO ESSENTIAL SOLAR PANEL NOT CHARGING



We have 2 cameras installed and worked fine for 2 months with solar panels. Both batteries drained completely and will not recharge. Tried different outlets with original leads, different leads. Nothing. deleted app and started again. Tried removing device from app and no pairing lights appear to



Large 7.5' x 4.02' Solar Panel for Efficient Charging. The Arlo Solar Panel Charger features a 7.4' x 4.02' solar panel, providing enough surface area to convert sunlight into electrical energy efficiently. It took me less than ten minutes to securely mount the solar panel and connect it to my Arlo Essential Spotlight camera, which



I have an essential gen2 camera and the solar panel, genuine, will not keep it charged, it has minimal triggers causing recording. The icon shows that it is charging. But has since gone flat. My Gen 1 had a bigger solar panel which had no issues. The current setting is ???

ARLO ESSENTIAL SOLAR PANEL NOT CHARGING



If you are having problems charging the battery for the Arlo Essential Camera, Arlo Essential Spotlight Camera, or Arlo Essential XL Spotlight Camera, try the following: Ensure you are using the micro USB charging cable that was included in the box with your camera. Note: The micro USB charging cable that came with your camera is for indoor use only.



I connected the solar panel to my Arlo Camera. Based on the icons showing, it is clear that the solar panel is connected properly. The first time the power dropped below 100%, it immediately charged the camera until it reached 100% again. After that first time, it does not automatically charge. I



Arlo Solar Panel Not Charging Too Hot. The Arlo solar panel should work just fine, even on the hottest summer days. However, the Arlo camera will no longer charge if the camera itself or the battery gets too hot, which will prevent it from getting a trickle charge from the solar panel. In most cases, the Arlo cameras can charge and operate in

ARLO ESSENTIAL SOLAR PANEL NOT CHARGING



How do I charge the Arlo Essential Camera, Arlo Essential Spotlight Camera, or Arlo Essential XL Spotlight Camera? Why is my Arlo Pro 3 Floodlight Camera not working while it is charging? Arlo Solar Panel. How to troubleshoot Arlo ???



My essential spotlight camera stopped charging from the solar panel. I removed the device and reinstalled it. Hooked it up to the panel after fully charging the camera. It worked as usual the first day after hooking up the solar panel but the next day it stopped receiving the charge from the panel again.



The Arlo Essential Solar panel is weather resistant with an 8ft power cable and an adjustable mount. Shop Arlo accessories. Shop the Ultra Security Sale and get up to 46% off best-sellers! Products Solar Panel Charger. For 1st Gen Essential Cameras. Item No. VMA3600B-10000S

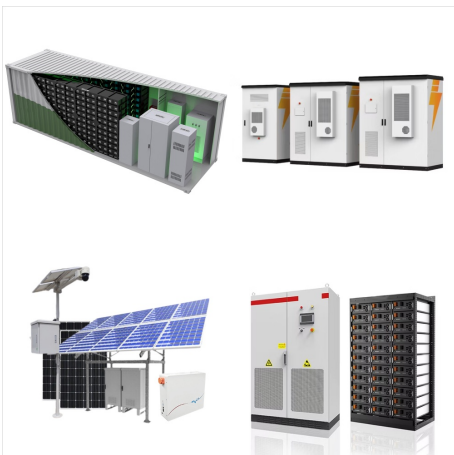
ARLO ESSENTIAL SOLAR PANEL NOT CHARGING



2 Arlo Pro 4 connected to Wasserstein solar panels (aftermarket). 1 Pro 4 connected to Arlo solar panel. 1 Pro 3 connected to Wasserstein solar panel (did not have any issues with solar charging). After upgrading to the new app AND disconnecting and reconnecting the magnetic connectors, they are all charging after 1 evening of no solar.



Amazon : Arlo Essential Solar Panel Charger - Arlo Certified Accessory - Weather Resistant, 8 ft Power Cable, Adjustable Mount, Only Works with Arlo Essential and Essential XL Cameras, White - VMA3600 : Patio, Lawn & Garden 6V 4.5W Solar Panels Charging IP65 Weatherproof w/ 9.8ft Charging Cable Adjustable Wall Mount, 2 Pack.

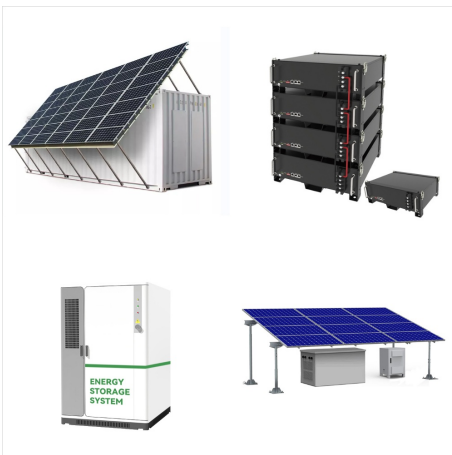


The Arlo Solar Panel Charger keeps your battery charged with direct sunlight. It's weather resistant design, 2.4m magnetic power cable, and adjustable mount makes installation easy anywhere. Save on Arlo Bundles. Shop our top-selling security bundles and save up to \$200. Add accessories to your setup. Enhance your Arlo home security system.

ARLO ESSENTIAL SOLAR PANEL NOT CHARGING



I replaced a 1st generation essential camera with a 2nd generation essential camera (VMC3050) with the appropriate solar panel(VMA6600-10000S). All of the wiring and connectors are intact and the solar panel receives sufficient sunlight. The icons on the camera do not indicate that the panel is rec



The impacted camera is able to maintain a charge for >1 month if it's not plugged into the solar panel, so it has nothing to do with signal strength or activity levels. I contacted support to exchange the now destroyed battery, but the same panel seems to have the same effect on the replacement battery that was sent to me.



The Arlo Essential Solar panel is weather resistant with an 2.4m power cable and an adjustable mount. Shop Arlo accessories. New Arlo Wired Floodlight Shop Now Solar Panel Charger. For 1st Gen Essential Cameras. Item No. VMA3600-10000S \$99.00 \$79.00 (Save 20

ARLO ESSENTIAL SOLAR PANEL NOT CHARGING



The VMA5700 Essential Outdoor Charging Cable is weather-resistant and can continuously charge your camera battery when connected to an outlet. Solar Panel Charging. The VMA6600 Essential 2 Solar Panel keeps your battery charged with direct sunlight. The solar panel's weather-resistant design, 8-foot power cable, and adjustable mount make

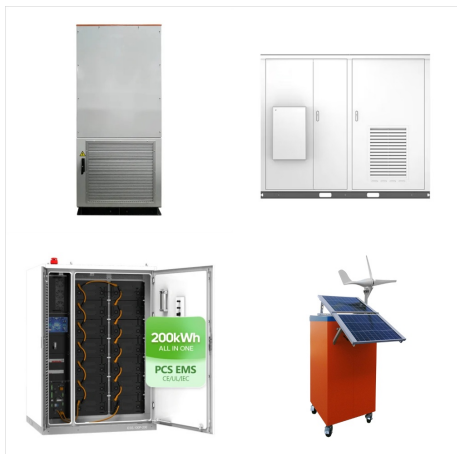


Based on the comment made by Arlo it appears when the camera is connected to a solar panel but the panel is not charging the camera which would be true when there is no sun, at night, or the camera is changed to 100% the icon shown is red with a lighting bolt. When the solar panel is charging the camera the icon is green with a lighting bolt.



With the Arlo Solar Panel connected to the camera and receiving average sun exposure, your camera battery stays charged, so you don't need to worry about recharging it. The solar panel is a great low-maintenance solution for outdoor camera installations in hard-to-reach areas. Although the Arlo Solar Panel is designed to keep your Arlo camera's battery fully ???

ARLO ESSENTIAL SOLAR PANEL NOT CHARGING



Arlo Essential Solar Panel Charger keeps your Essential Outdoor and XL Outdoor Camera (2nd Generation) battery charged with direct sunlight. Its weather-resistant design, 8-foot power cable, and adjustable mount make installation easy anywhere. Add to Cart. Item No. e2-dual-solar-panel-charger



Arlo Essential Solar Panel Charger keeps your Essential Outdoor and XL Outdoor Camera (2nd Generation) battery charged with direct sunlight. Essential Solar Panel with Charging Cable (1) Wall Mount (1) Wall Mount Screw Set (1) Quick Start Guide (1) Bundle & Save! Up to 25% off sale prices when you build your own bundle.

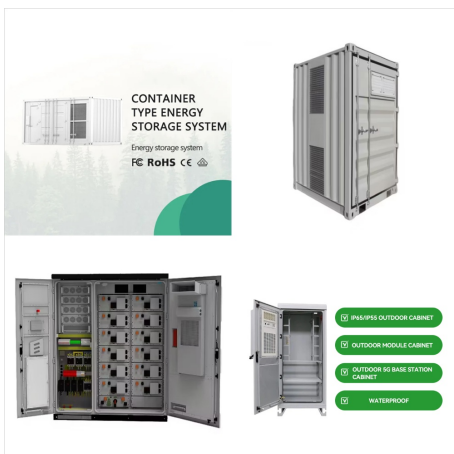


With the Arlo Solar Panel connected to the camera and receiving average sun exposure, your camera battery stays charged, so you don't need to worry about recharging it. The solar panel is a great low-maintenance solution for outdoor camera installations in hard-to-reach areas. Although the Arlo Solar Panel is designed to keep your Arlo camera's battery fully charged, heavy ???

ARLO ESSENTIAL SOLAR PANEL NOT CHARGING



I have concluded the solar panels are at min design ability. Any loss of a cell or direct sun will cause the system to not work. I bought this as a kit from Costco. I wish I could return and get the larger solar panels they should have packaged with these 2k essential cameras. I would be happy to pay the difference if Arlo is listening. Thanks



I connected the solar panel to my Arlo Camera. Based on the icons showing, it is clear that the solar panel is connected properly. The first time the power dropped below 100%, it immediately charged the camera until it reached 100% again. After that first time, it does not automatically charge. I



Note: Charge your Arlo camera before using it with the Arlo Solar Panel. The Arlo Solar Panel is meant to keep your camera charged, not to charge it from low to full battery. Ensure your Arlo camera is compatible with the Arlo Solar Panel. To troubleshoot Arlo Solar Panel charging: Check the solar icons in the Arlo Secure App to determine the

ARLO ESSENTIAL SOLAR PANEL NOT CHARGING



In this article, I'll discuss five likely culprits behind Arlo Solar Panel not charging. I'll also walk you through three tips that might help you fix the charging issue. So, stick around!