

Why is my Arlo camera not charging?

Ensure your Arlo camera is compatible with the Arlo Solar Panel. Check the solar icons in the Arlo Secure App to determine the charging state. : It is possible that these icons will only display for a few minutes and then revert to gray. : If the battery is too cold or too hot, it will not charge. Unplug the Arlo Solar Panel cable from your camera.

Should I charge my Arlo camera before using the solar panel?

: Charge your Arlo camera before using it with the Arlo Solar Panel. The Arlo Solar Panel is meant to keep your camera charged, not to charge it from low to full battery. Ensure your Arlo camera is compatible with the Arlo Solar Panel. Check the solar icons in the Arlo Secure App to determine the charging state.

Why is my Arlo solar panel not charging?

: If the battery is too cold or too hot, it will not charge. Unplug the Arlo Solar Panel cable from your camera. Check the condition of the Arlo Solar Panel cable to confirm there are no exposed or damaged wires. Reconnect the Arlo Solar Panel cable to your camera.

How do I charge my Arlo camera?

Ensure the Arlo camera battery is fully inserted and that you are charging it with the Arlo Solar Panel. The Arlo Solar Panel charges the battery, but it cannot power the camera if the battery is not installed. Make sure your camera battery is fully charged when you connect the Arlo Solar Panel to your camera.

How do I fix a non-charging Arlo solar panel?

Here's what to try first to fix a non-charging Arlo solar panel: Make sure you clean your Arlo solar panel and position it towards the sun. Unplug the camera cables. Squeeze the sides of the charging plug to remove it from the solar panel. Reinsert the charging plug into the solar panel. You'll hear a clicking sound if you insert the plug properly.

Does Arlo support solar charging?

Unfortunately, not all smart cameras are fully supported by the Arlo solar panel. This leads us to believe that you could be using a device that does not support the feature of solar charging. However, if you want to make

ARLO SOLAR PANEL NOT CHARGING



sure whether that is the case, then you will need to visit Arlo's official site and check the compatibility list.



The Arlo Solar Panel is designed to provide trickle charging to keep your camera battery charged, not to charge your camera battery from low to full. Reduce your camera usage for a day or two and note your camera's battery level. Heavy usage of your camera can drain the camera battery faster than the solar panel can recharge it, especially



The Arlo Solar Panel is meant to keep your camera charged, not to charge it from low to full battery. To troubleshoot problems with your Arlo Solar Panel: Unplug and reinsert both ends of ???

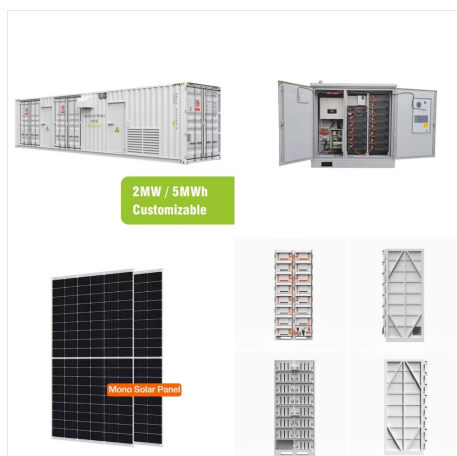


This is for "Arlo Essential Wire-Free Cameras, it HAS NOTHING do with Arlo Pro 4 Cameras using Arlo solar Panels. The so called solution within DOES NOT work for Arlo Pro 4 Cameras. Before they merged it to the wrong Forum it had like 7 pages of members problems experiencing the same issue when it was in correct Forum of Arlo Pro 4 Cameras.

ARLO SOLAR PANEL NOT CHARGING



arlo solar panel not charging. If you often notice your smart camera's batteries running out of charge, then Arlo offers the best solution for such circumstances through their solar panels. Even though these are great for charging your camera's batteries, certain users have started complaining about these not working.



Last month we purchased a few Arlo Go 2 cameras for our rural land to monitor for trespassers. We also installed the solar panels. Everything was working fine until this week. Now the solar panels are not charging the cameras. Here is what happens. We unplug the solar panel wire from the camera. W



Assuming that no water got inside the camera and the panel is not defective, I have read that if the battery charge gets too low, the solar panel will not recharge the battery. You will have to plug the camera with the battery in it into the AC power adapter that came with the system and charge the battery with the adapter plugged in.

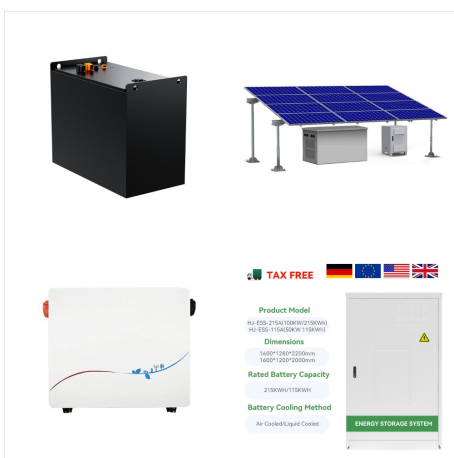
ARLO SOLAR PANEL NOT CHARGING



I have 64 Arlo Go 2 cameraes with solar panel, where the charging stops and then we have to connect and disconnect the charging cable, which will make it charge again temporarily. I reached out to the customer support and refered to a nother community post with the exact same issue, where it was fixed through a specific firmware update.



Ever since getting the last update (iPhone) on the Arlo app, both outdoor cameras are not responsive to the solar panel charging. There's been some Arlo is the world's first 100 percent wireless high-definition smart home security camera.



The solar panel was not charging the pro 3 flood camera and I received a message that I need to use the right charging device plus the panel also knocked the camera offline. When I moved the solar panel to the ultra 2 camera it did the same thing and I realized It is the solar panel that is bad. Arlo is sending a replacement. thanks for your help!

ARLO SOLAR PANEL NOT CHARGING



Arlo Solar Panel Not Charging Too Hot. The Arlo solar panel should work just fine, even on the hottest summer days. However, the Arlo camera will no longer charge if the camera itself or the battery gets too hot, which will prevent it from getting a trickle charge from the solar panel. In most cases, the Arlo cameras can charge and operate in



If you encounter an issue with your Arlo Solar Panel not charging your Arlo Pro camera, follow these troubleshooting steps to identify and resolve the issue. Check the temperature: Arlo Solar Panels will not charge the camera's battery in temperatures below 32°F (0°C) or above 113°F (45°C). Ensure that the panel is operating within this



I have a arlo go 2 camera that is not connecting to solar panel. Have restarted as well as fully charged on wall charger before hand but is not connecting to solar panel when it's hooked up. Wondering if it's the camera as seem to have issues with camera picking up wall charger at times too.

ARLO SOLAR PANEL NOT CHARGING



Note: Charge your Arlo camera before using it with the Arlo Solar Panel. The Arlo Solar Panel is meant to keep your camera charged, not to charge it from low to full battery. Ensure your Arlo camera is compatible with the Arlo Solar Panel. To troubleshoot Arlo Solar Panel charging: Check the solar icons in the Arlo Secure App to determine the



Have an Ultra 2 Outdoor camera with a solar panel that is not charging. Here is what I have done up to now: purchased a new battery. cleaned all the connections. Added electric grease to all connections. I am getting 7.8 V from the solar panels. camera battery is at 4.5 V. When I install a charged battery to the camera it will read 100%.



Firmware was updated to 1.080.17.1_32_5097d3c and the app to ver 3.5.10 but the Arlo solar panel VMA5600 does not appear to be charging the camera. This is the second Arlo panel we've tried (first was VMA5600B) so starting to think these are duds. Panels are facing south & I've adjusted/cleaned the magnetic cable connector multiple times.

ARLO SOLAR PANEL NOT CHARGING



It is a 2-watt solar panel designed to provide trickle charging to keep your camera battery charged, but not to charge your camera battery from low to full. If you have a goodncharge to begin with, it should keep it fully charged. Make sure the solar panel is properly aimed to get the longest exposure to bright sunlight.



The Arlo Solar Panel Charger keeps your battery charged with direct sunlight. It's weather resistant design, 8-foot magnetic power cable, and adjustable mount makes installation easy anywhere. ??? View All Compatible Devices. Ultra 2 ???



This Arlo Ultra/Pro 3 solar panel charger offers flexible placement and makes it easy to keep your camera charged with an 8-foot magnetic charging cable. Including VMC4040P (B)-100NAS, VMS4240P-100NAS, VMS4340P-100NAS, VMS4440P-100NAS, VMS4640P-100NAS, VMC4240B-100NAS, VCS4440B-100NAS, VMS5440-100NAS.

ARLO SOLAR PANEL NOT CHARGING



4 Common Reasons Why Your Arlo Solar Panel Is Not Charging ??? Troubleshooting. When your Arlo solar panel isn't charging your camera, it can be due to several factors. Understanding these reasons will help you diagnose and resolve the issue effectively. Below are the most common reasons why your Arlo solar panel might not be charging: 1.



My solar panel stopped charging the attached camera. When I checked the pins on the connector I discovered that two of the pins on the connector had Arlo is the world's first 100 percent wireless high-definition smart home security camera.

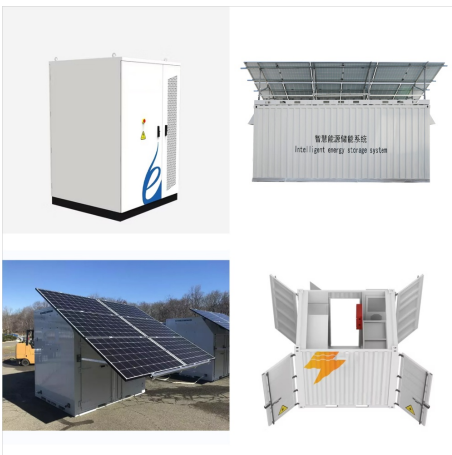


The Arlo Solar Panel Charger keeps your battery charged with direct sunlight. It's weather resistant design, 2.4m magnetic power cable, and adjustable mount makes installation easy anywhere. Save on Arlo Bundles. Shop our top-selling security bundles and save up to \$200. Add accessories to your setup. Enhance your Arlo home security system.

ARLO SOLAR PANEL NOT CHARGING



With the Arlo Solar Panel connected to the camera and receiving average sun exposure, your camera battery stays charged, so you don't need to worry about recharging it. The solar panel is a great low-maintenance solution for outdoor camera installations in hard-to-reach areas. Although the Arlo Solar Panel is designed to keep your Arlo camera's battery fully ???

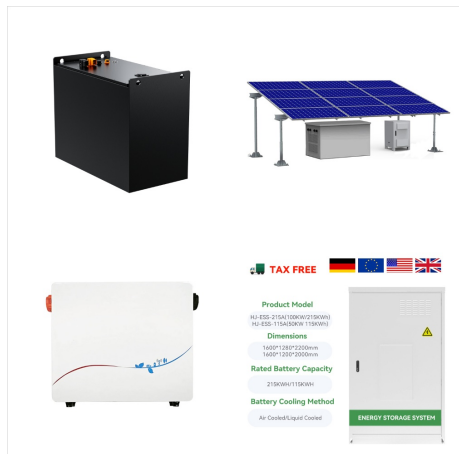


3x Arlo Pro4 with VMA5600 set up, on 2 continents, all stopped charging at the same time. Sonetime in December. 3x Arlo Pro4 wall AC powered, no issue at all, 100% charged. Fixes like restart, unplug etc, all fail to resolve solar power charging issue. Not a hardware or solar panel issue. It's likely a firmware upgrade from December issue.



Fully charged for the first time is recommended because Arlo solar panel can not charge an empty battery. This issue is caused by many reasons, including the charging and discharging capacity of the battery. A solar battery should have 50% stored power to ???

ARLO SOLAR PANEL NOT CHARGING



My own panel (used with an Ultra) charges until it gets below freezing. As @jguerdat says, that is a limitation of the lithium battery inside (it is for safety). Mine does charge at 40 degrees. I'm in New England, so it definitely is too cold to charge sometimes during the winter - though many days it is above freezing in the middle of the day.



No it only get 1-3 motion activations a day and records for 15 seconds. It last recorded on June 14th then went off line on the 15th. Came back online yesterday (18th) and camera was at 3%???through solar panel charged yesterday to 13% and today it is charging on the solar panel and is currently charged to 39%.