



Location. The power station is expected to occupy an estimated 304 hectares (750 acres) of real estate in a locality called Aniocha South, in the village of Ashama, in Delta State, in Southeastern Nigeria. Ashaba is located approximately 37 kilometres (23 mi), by road, west of the city of Asaba, where the state headquarters are located. Ashama lies approximately 238 kilometres (148 mi) ???



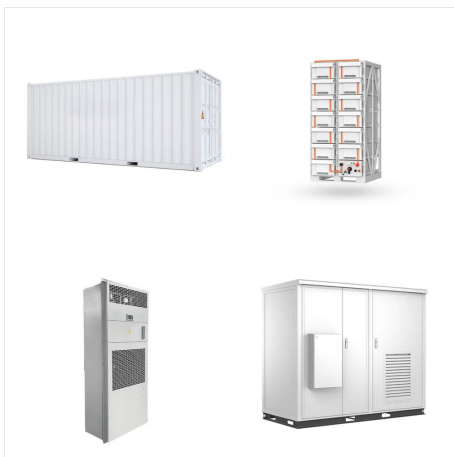
The solar farm, called the Ashama Solar Photovoltaic Project, will be the largest PV system in West Africa. A statement by Greenplinth Africa ??? a Pan-African green solutions firm and a strategic partner to the project promoters ??? said a media chat and project roadmap presentation will take place on February 25, 2021 at the Sheraton Hotel



Ashama Solar Power Station, is a planned 200 megawatts (270,000 hp) solar power plant in Nigeria. When completed, it is expected to be the largest solar power station in West Africa. (en) dbo:buildingStartDate: 2021 Expected; dbo:buildingStartYear: 2021-01-01 (xsd:gYear) dbo:country: dbr:Nigeria;



The objectives envisioned by the Federal Government of Nigeria (FGN) are to increase electricity access to 90% by 2025 and source 10% of the total energy supply from renewable energy (RE) sources according to the National Electric Power Policy of 2001 and the Rural Electrification Policy of 2005 [37]. The two main alternatives for this strategy are solar ???



B& S Power, a Singapore based renewable energy corporation, and Sunnyfred Global, a Nigerian investment entity, have concluded arrangements in collaboration with other stakeholders and Technical Partners, to Design, Develop, Finance and Construct West Africa's largest solar PV farm in Nigeria ??? The Ashama 200 MW solar PV project.



B& S POWER HOLDING PTE, a Singapore based renewable energy corporation, and SUNNYFRED GLOBAL, a Nigerian investment entity, have concluded arrangements in collaboration with other stakeholders and Technical Partners, to Design, Develop, Finance and Construct West Africa's Largest Solar Photovoltaic Farm in Nigeria ??? THE ASHAMA ???



LAGOS, Nigeria & NEW YORK ??? Feb. 17, 2021
 ??? PRLog ??? B& S POWER HOLDING PTE, a
 Singapore based renewable energy corporation,
 and SUNNYFRED GLOBAL, a Nigerian investment
 entity, have concluded arrangements in
 collaboration with other stakeholders and Technical
 Partners, to Design, Develop, Finance and
 Construct West Africa's Largest ???



13. Solar collectors capture and concentrate
 sunlight to heat a synthetic oil called terminal, which
 then heats water to create steam. The steam is
 piped to an onsite turbine-generator to produce
 electricity, which is then transmitted over power
 lines. On cloudy days, the plant has a
 supplementary natural gas boiler. The plant can
 burn natural gas to heat the water, ???



Solar power plants are systems that use solar
 energy to generate electricity. They can be
 classified into two main types: photovoltaic (PV)
 power plants and concentrated solar power (CSP)
 plants. Photovoltaic power plants convert sunlight
 directly into electricity using solar cells, while
 concentrated solar power plants use mirrors or
 lenses???



B& S Power Holding PTE, a global renewable energy and mining developer, engaged in renewable energy power plant design, development, financing, construction and operation, together with SunnyFred Global, a Nigerian investment entity, have concluded arrangements in collaboration with other stakeholders and technical partners, to design, ???



Set on 304 hectares of land, the Ashama 200 MW Solar PV Power Plant, which is located in Aniocha, Delta State, is the largest solar energy project in West Africa and is being promoted by B& S Power Holding PTE, a Singapore-based renewable energy company with biggest completed projects in South Africa, Egypt and Morocco, and Sunnyfred Global, a



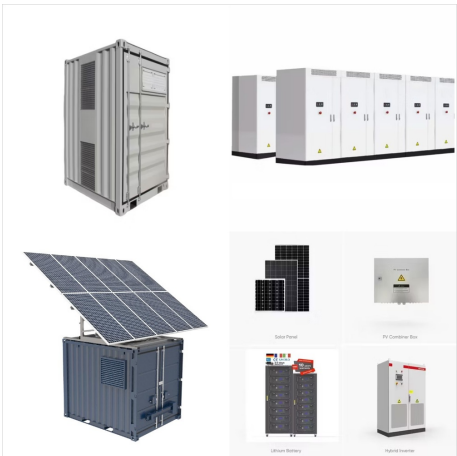
Such a power plant is referred to as an Independent Power Producer (IPP). Capacity, generation and demand. As of December 2013, the total installed or nameplate capacity (maximum capacity) of the power plants was 6,953 MW. Available capacity was 4,598 MW. Ashama Solar Power Station: Delta State



The station was the tallest solar power tower in the world at a height of 260 meters including the boiler [7] but was recently surpassed by the 262.44 meter tall solar power tower at the Mohammed bin Rashid Al Maktoum Solar Park. [8] Ashalim Plot C is a 30MW photovoltaic plant, commissioned in 2018, one year before the CSP plants.



The Nigerian company Sunnyfred Global has signed an agreement with the Singaporean company B& S Power Holding PTE for the financing and construction of a photovoltaic solar power plant in Ashama, Delta State. With an expected capacity of 200 MWp, it will become the largest solar power plant in West Africa.



Global Solar Power Tracker, a Global Energy Monitor project. Report an error: Other names: Pan African Solar Katsina project Katsina solar farm is a shelved solar photovoltaic (PV) farm in Galadima A, Kankia, Katsina, Nigeria. Project Details Table 1: Phase-level project details for Katsina solar farm. Status Nameplate capacity



Ashama Solar PV Country: Nigeria. Province: Subscribe to view content . Locality: Subscribe to view content . See plant proximity to transmission and distribution infrastructure; Set up and receive emailed notifications of new and updated power generation projects ??? follow projects by country, fuel or a combination of the two.



Can A Solar Generator/Power Station Power A Refrigerator? Residential refrigerators and freezers use around 700-1200W to start, and 100-500 to run. So if you want to power a large fridge or freezer, I recommend a power station with at least a 1500W inverter.



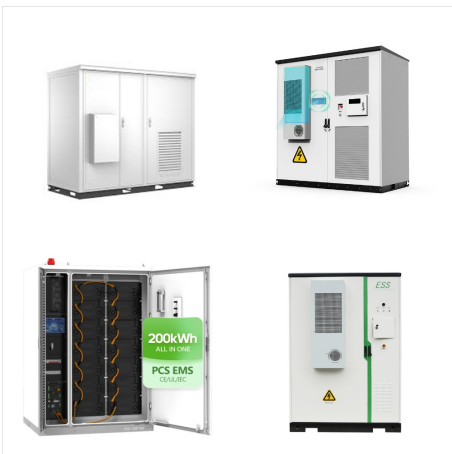
B& S Power, a Singapore based renewable energy firm, and Sunnfred Global, a Nigerian financial investment entity, have ended plans in partnership with other stakeholders and also Technical Partners, to Design, Develop, Finance and also Construct West Africa's largest solar PV ranch in Nigeria-- The Ashama 200 MW solar PV project.



should be on the oil and gas sector, while power, transport, and the waste sectors could be considered in mid-long term. e 9 1.0 Introduction The term Zcarbon pricing [refers to an instrument aimed at reducing carbon emissions, by capturing the



Nigeria Hosts West Africa's Largest Solar-PV Farm - B& S Power Holding Pte, SunnyFred Global Facilitate 200MW Solar-PV Project In Ashama, Delta State Media Chat and Project Roadmap Presentation



The Nigerian company Sunnyfred Global has signed an agreement with the Singaporean company B& S Power Holding PTE for the financing and construction of a photovoltaic solar power plant in Ashama, Delta State. With an expected capacity of 200 MWp, it will become the largest solar power plant in West Africa.



The Ashama 200MW/hr solar PV farm is located on about 304 ha of land in Ashama Village, Aniocha South of Delta State in Nigeria. According to a statement from Greenplinth Africa, consultants and strategic partners to the project promoters, a media chat and project roadmap presentation would take place on 25 February 2021 by 11am (WAT) at



Shams Solar Power Station (Arabic: شمس, lit. "Sun") is a concentrating solar power station near Madinat Zayed, Abu Dhabi, the United Arab Emirates. The solar power station is located approximately 120 kilometres (75 mi) southwest of Abu Dhabi and 6 kilometres (4 mi) from Madinat Zayed on the road from Tarif to the Liwa Oasis. [3]The Shams station is planned to ???