



Traditional solar panels are not attractive. The Timberline Solar roofing shingle system is attractive and elegant ??? especially compared to the old solar panel installations. Old solar is a thing of the past. Once the general public begins to see the GAF Energy solution, no one will want the old style on their roofs.



Solar Metal Roof Panels combine solar technology with traditional roofing materials allowing homeowners to generate electricity from sunlight without compromising aesthetics or functionality. This makes them an attractive option for homeowners looking to upgrade their current roof system without incurring significant costs.



SunStyle(R) is a structural roof and solar module combined, providing a durable, leak-proof roofing solution that is both beautiful and protective. Solar shingles are more durable than most standard roofing materials, even in harsh weather conditions like hail, snow, rain and high wind.

ATTRACTIVE SOLAR ROOF PANELS



The AXITEC AXIblackbipremium XXL HC all black solar panel generates up to 25% more power output by using bifacial technology, which produces power from both sides of the panel. Canadian Solar: Best all black PERC modules. Canadian Solar's HiDM All-Black high-density PERC solar panels feature low power loss for enhanced efficiency over



Improperly managed electrical can ruin an otherwise attractive looking system. Finally, there is proper design and installation. Expert designers will arrange solar panels in a neat row-column format, giving the array an intentional, organized look. Experienced installers will mount the panels flush, straight, and centered inside the roof face.



Solar power is a renewable energy source that can offer a wide range of benefits for homeowners. Until fairly recently homeowners had to choose between an appealing roof that was attractive but that did not offer the ability to capture solar energy or a roof that provided solar power using large solar panels that stood out and detracted from the home architecture and aesthetics though.

ATTRACTIVE SOLAR ROOF PANELS



Explore which roof types are best for solar panels to maximize efficiency and savings. Get expert advice from SunVena Solar in our latest blog post.

Additionally, the cost-effectiveness and accessibility of asphalt shingle roofing make it an attractive option for many homeowners looking to switch to solar energy. Composite Shingle Roofing.



When installed on a roof, solar panels must be connected to the main service panel and power inverter within the house. The home's inverter and main power supply must be connected to these solar panels via an external cable. While solar tiles have attractive features, there may be fewer design alternatives than conventional roofing



Unlike traditional solar panels, which are mounted on top of existing roofs, solar panel roof tiles are designed to mimic the appearance of standard roofing materials. This integration allows for a more visually appealing and cohesive look, making them an attractive option for homeowners seeking to maintain the architectural integrity of their

ATTRACTIVE SOLAR ROOF PANELS



Choose a customizable and attractive solar roof that blends perfectly with the aesthetics of any structure. Suncol Tile replaces traditional roofing material by seamlessly integrating into any roof. Its high energy efficiency changes the way buildings operate and reduces CO2 emissions making the building sustainable.



Solar shingles and tiles are an attractive alternative to traditional solar panels, designed to blend seamlessly with your existing roof. These photovoltaic (PV) materials replace or overlay your

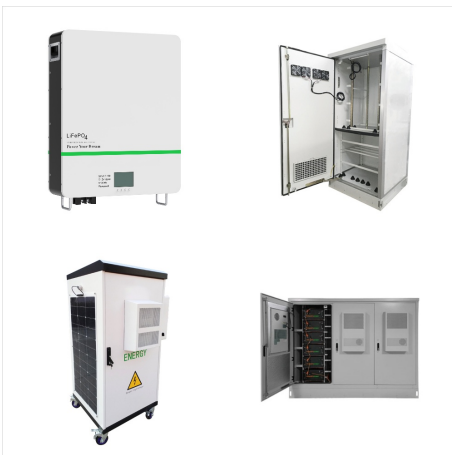


The panels are a bit jarring, as they stick out from the roof, and the white-backing and visible wires give them a waffle-grid look that puts them in stark contrast to the color of the roof. Unfortunately, this is likely the stereotype image most homeowners associate with ???

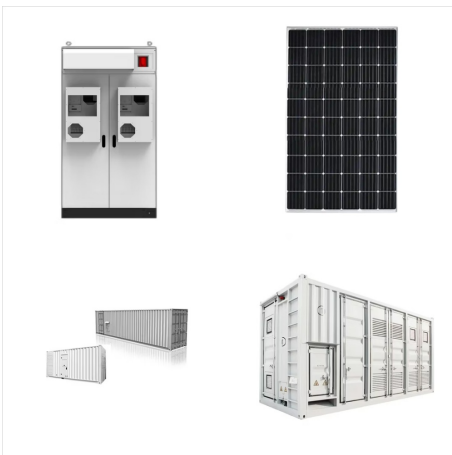
ATTRACTIVE SOLAR ROOF PANELS



Global solar and construction accreditation bodies are used to test and certify our solar panels and mounting systems. In independent fire tests, GB-Sol's PV Slates achieved EXT.S.AA, the highest possible rating under BS 476-3: 2004 - Roof Fire Test. Testing also confirmed passes for the CEN/TS1187:2012 Test4.



In my opinion, solar panels can be attractive or unattractive, depending on the design and installation. Solar panels can also help to reduce roof discoloration and fading, which can improve the overall appearance of the home. However, poorly designed or installed ugly solar panels can be unattractive. For example, a system that uses



Bigger chunks of roof are easier, and cheaper, to install solar panels. Keep in mind that a standard residential solar panel is roughly five and a half feet tall by three feet wide. Pictured below, this 290 to 320 watt solar panel from URE represents a standard residential product. Panel sizes vary by manufacturer and model.

ATTRACTIVE SOLAR ROOF PANELS



Frameless panels provide a seamless aesthetic, while colored panels offer the versatility to blend in with the existing roof or add a distinctive architectural flair. As a result, the modern solar panel market empowers homeowners to invest in sustainable energy solutions that seamlessly integrate with their homes while enhancing curb appeal and



Solar roof tiles are mini solar panels that are installed in a way similar to traditional roof tiles. Just like solar panels, they are made out of photovoltaic panels. Solar tiles are visually more attractive. Solar tiles are available in several design options that mimic traditional slate stone tiles or ceramic tiles.



For example, if your roof is designed at a steep angle, the panels will be easily visible to onlookers, whereas lower-pitch roofs will make solar panels more difficult to see. When the panels are obviously visible, homeowners are most motivated to find the best-looking solar panels available.

ATTRACTIVE SOLAR ROOF PANELS



The optimal direction for solar panels in Adelaide is North tilting at 35 degrees. Panels face East will generate more power in the mornings and West-facing solar panels will favour energy production in the evenings. Generally solar panel installers will match the orientation of the solar panels to your roof unless your roof is flat or South



Solar power is a renewable energy source that can offer a wide range of benefits for homeowners. Until fairly recently homeowners had to choose between an appealing roof that was attractive but that did not offer the ability to capture ???



Solar panels are no longer the ugly duckling of renewable energy. Read the Naked Solar guide to Solar Aesthetics so you can save money AND bling your roof. In-Roof Solar Panels can reduce the cost of roofers and slates/tiles while looking like they were meant to be there all along. And with new heat recovery technology on the market, they

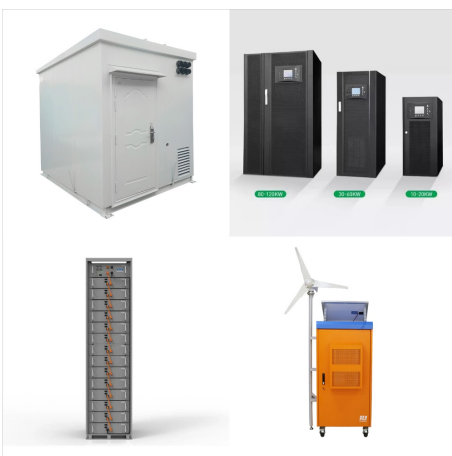
ATTRACTIVE SOLAR ROOF PANELS



As a general rule, solar panels can produce a watt of power for a little under \$3, while solar tiles will do the same for between \$4 and \$7, according to a survey conducted by MarketWatch. Solar panels are cheaper. However, other factors may make solar shingles the more attractive option.



Tesla's Solar Roof is the elite solar roof offering on the market. It's the biggest brand with the shiniest extras including Tesla's own Powerwall battery and monitoring app for iPhone and Android. Looks fantastic. The two available tile types let you choose from a futuristic glass roof, or blend in with a textured tile



The Q.PEAK series from Q Cells is a great choice for solar buyers seeking an attractive balance between cost and quality. The 25-year product warranty offered on the Q.PEAK series offers excellent coverage for a value-priced alternative to pricier top-of-the-line options, giving users access to superior reliability and peace of mind at a fraction of the price.

ATTRACTIVE SOLAR ROOF PANELS



In the case of a circular or curved roof, circular solar panels can be an ingenious solution. Meanwhile, in a more avant-garde setting, you might picture an abstract configuration. With creative custom shapes, you can achieve both an attractive array that compliments your house design, and an effective energy-saving solution. Just let your