



Niles Auriel??? is the simplest way to integrate the smart home control you use most ??? lighting and climate ??? into your home audio and entertainment system. And with built-in streaming audio and remote access, the result is an exceptional home control experience.



Every make, model, and year of car is different, so installation of an upgraded sound system can be tricky. Most factory radios today are so much more than the radio. They are the command center for the infotainment system of the vehicle and changing them gets very expensive (if even possible) and you do not get much of a sound improvement.



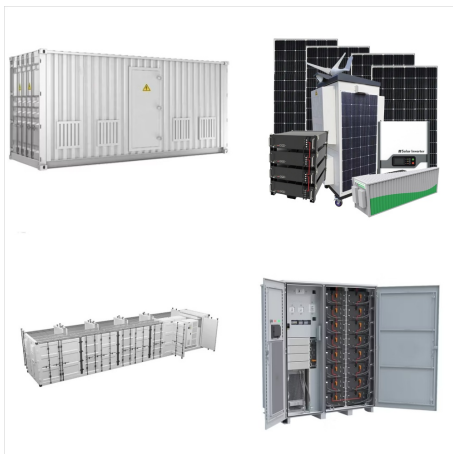
This single-unit solution provides unprecedented power and tuning flexibility when you require audio perfection from your factory or aftermarket sound system. The D-4.800 features active speaker a fully featured Matrix DSP Interface designed to give you instant and clear control over every aspect of your processor. Route any input to any



Step 2 ??? Choose gear to power and control your system. In-ceiling and outdoor speakers need power. So you'll need one or more amplifiers to hook them up. Mark chose a single 12-channel AudioSource amp that could direct power to all six of his in-ceiling and outdoor speaker locations.



These ratings determine how many 70V speakers you can connect to the volume control and how much power each speaker can receive. For example, you can connect five speakers tapped at 5W to a 25W volume control, or 25 speakers tapped at 1W. If more power (louder sound) is required, a 100W volume control could be used with 2 speakers tapped at 50W.



This single-unit solution provides unprecedented power and tuning flexibility when you require audio perfection from your factory or aftermarket sound system. The D-6.1200 features active speaker a fully featured Matrix DSP Interface designed to give you instant and clear control over every aspect of your processor. Route any input to any



500W Subwoofer Amplifier with DSP The AudioControl RS 500 DSP-controlled subwoofer amplifier is the ultimate bass amplification solution for any home cinema, multi-zone audio, or 2.1-channel music system. RS Series amplifiers deliver continuous power into speaker loads from 2 to 8 ohms, and like many AudioControl amplif



The stereo system is compact but still packs a serious about of power with bass boost and tone control features to get the exact sound you're after. If you're still into CDs, having the 5-disc changer is going to make life that much easier as you can load your favorite CDs and then switch between them without needing to load and unload.



A mid-level MC/MCA system allows for six sources to be connected at the central location and shared throughout six audio zones, each with independent volume control. Our advanced Lync system allows for up to twelve audio zones and even more sources, including sources spread throughout your home, making it easier to connect devices like TVs. Lync also includes the ???



audio system. Though analog sound systems are still appropriate in many small and medium-size applications, digital technology can now be found in nearly every sound system component. Digital mixers, signal processors, and networking are standard in most medium and large sound systems. Though the basic transducer (microphone and



autosound audio system while restraining destructive bursts. Yeh!! page 3 Five Year Warranty The most important feature of all. Every (Programmable Frequency Match) filter which will help with speaker control and amplifier power management. To change the PFM frequency, you need to remove the top of the chassis and change the modules. Your



The stereo system is compact but still packs a serious about of power with bass boost and tone control features to get the exact sound you're after. If you're still into CDs, having the 5-disc changer is going to make life ???





TSL specialises in developing and delivering innovative and award-winning Control, Audio Monitoring, Power Distribution and Facility Monitoring solutions that solve real-world problems for broadcast and media professionals. Our dedication to designing advanced hardware and software options is driven by our commitment to meet the evolving needs of our customers.



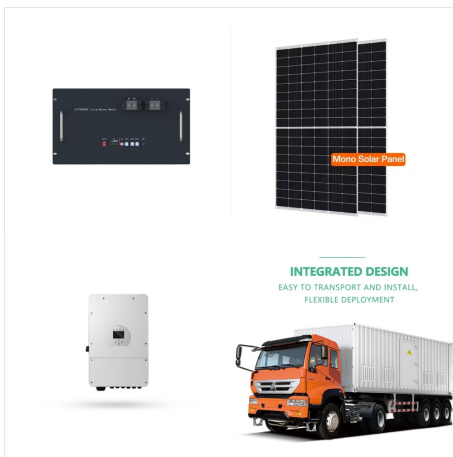
Moukey Home Audio Amplifier Stereo Receivers with Bluetooth 5.0, 400W 2.0 Channel Power Amplifier Stereo System w/USB, SD, AUX, RCA, MIC in w/Echo, LED for Karaoke, Home Theater Speakers - MAMP1 Bluetooth 5.0  
50W+50W+100W 2.1 Channel Subwoofer Amplifier Board TPA3116D2 HiFi Treble and Bass Control Stereo Digital Audio Amp Board for Home



AUDIO Cu is a groundbreaking sound over the power lines solution that enables home audio theater systems to operate without the need to run cumbersome speaker wire from an audio video receiver (AVR) to each speaker in any room or environment. With our pioneering proprietary technology, AUDIO Cu replaces the AVR to deliver seamless, dependable, high resolution (Hi ???)



On the front of the unit you get a power switch, a status LED, and three knobs to control treble, bass, and volume. When it comes to analog, you only get a single RCA line input. Similarly, you get a stereo speaker output, though, despite the size of the BT20A, these outputs accept the bigger banana plugs.



ACR-1, remote level control, so you can adjust the output of the bass channels from the convenience of the driver's seat. With the LC7i you have a high performance audio system while maintaining the features, functions and aesthetics of your factory source unit! This manual covers the features, functions, installation and usage of the



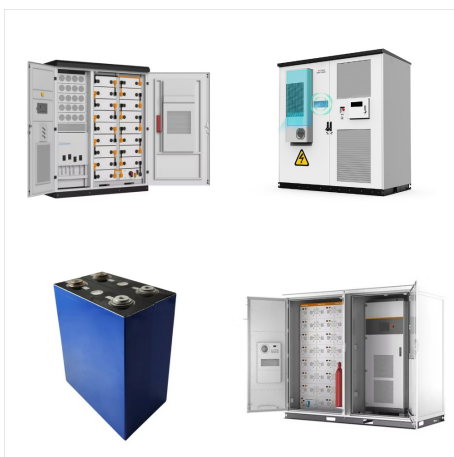
Hi Tim, thanks for reaching out! You can't play two sources at the same time with that Sony, just one. You can set it up with 2-channel stereo mode to have a 5.1 surround system and a stereo system that plays the same audio in another room. Or, use multi-channel stereo to have all speakers play stereo audio with no surround effects.



Also make sure the power switch on your sound system is in the ON position.) 7. Adjust the volume control on your sound system to the desired level. 8. To turn off, place your portable player in PAUSE or STOP. 9. The PowerSwitch Tail will de-energize your sound system after about 20-30 seconds of silence. Adjustments: 1.



Internal signal summing and AudioControl's new GTO??? signal-sense turn-on make the LC6i a perfect OEM interface for a performance audio system. The LC6i follows in the steps of the rampantly successful LC8 Eight Channel Line Output Converter, offering all of the same features for 6 channel systems at a reduced price.



Optimizing Your Sound System's Power Using DSP. Enhancing audio performance is vital when optimizing sound system power. DSP technology allows precise control over power handling, ensuring advanced audio performance and an optimized overall experience. By utilizing DSP technology, the power handling of sound systems is enhanced, resulting in