



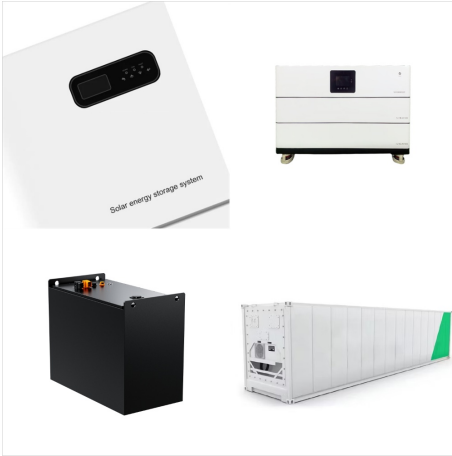
A budget-friendly power supply unit, the Azza PSAZ-550W PSU, could suit music production systems with basic hardware components. A 550-watt output provides sufficient power for most music production systems without breaking the bank. The PSU is 80 Plus Bronze certified, ensuring an efficient power delivery, which results in lower energy bills and less heat generation.



In this article we will explain the role of power inverter for sound system and how to choose it. Imagine listening to your favorite songs while living off-grid in the woods without worrying about the power supply. And finally, using an inverter for a sound system is a great eco-friendly choice. How?



If you just can't seem to remember where you put your radio's power supply, don't fret. Our replacement power cords and adapters, will get your radio back up and running in no time.* This 12V DC 1.5A power supply is compatible with the following products: Model One, Model One BT, Model Three, Model Three BT, Albergo, Albergo+, Music System



Power supplies make all the difference in audio, and the Sbooster offers a massive upgrade to a huge range of products. come from upgrading the electrical power supply to your system. Whether it's upgraded cables, a power ???



By delivering a pure and stable power supply, the NPX TT enhances the sound quality of your audio system, allowing you to enjoy every detail of your music. Compatible with a wide range of hi-fi systems, this power supply is a must-have for any audiophile or music enthusiast looking to elevate their sound system.



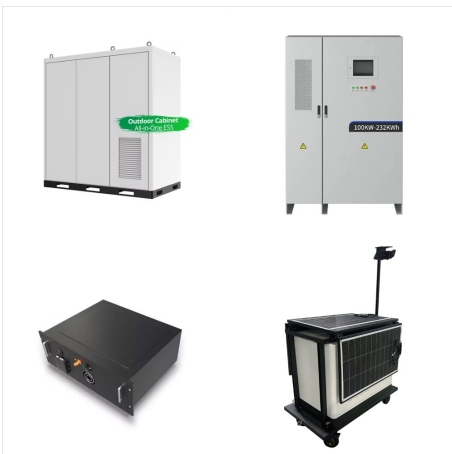
Electrolytic capacitors types for power supplies come and go. They attend different demands than stages interface or other more subtle applications. Some are large and recommended for main raw filtering, usually before regulators. Some are small and have to take care of smaller currents. Raw



Power Box DS2 Amp: Cleanest power for ultimate sound! Linear power supply consists of a big toroidal transformer with shielding between primary and secondary winding which acts as an isolation transformer and avoids penetration of interferences from mains into amplifier. This transformer has a big power reserve, compared to a standard power



If you plan on adding additional components like amplifiers or subwoofers, you will need to consider their power requirements when calculating the total amps needed for your entire audio system. Choose an appropriate power supply: Once you have determined the amps needed for your car stereo, choose a power supply or amplifier that can provide



Power up your system. Upgrade your existing power supply to the iFi iPower2 to flood your system with quiet, noise-free audiophile-grade clean power. EMI is a type of interference caused by errant and unwanted electromagnetic waves that are received and amplified by an audio system. They cause some of the annoying "audio gremlins" we



A world-class linear power supply, designed and built by hand in Takoma Park, MD. Works with the LTA MZ2 and most non-LTA components that can accept an external power supply, such as DACs, turntables, music servers, phono ???



The quick answer is yes, with the right power supply, you can hook up a car stereo to a house outlet with 120V or even 220V power. You cannot, however, directly connect a car stereo to an outlet. However, you'll need to know just a few things to make sure you don't have any headaches or potentially destroy your car stereo.



The ultimate Power Supply for Audio: We now have power supply boards to allow people to build their own power supplies. Just choose and install some voltage regulators, add a power transformer, and get either a dual power supply (1 ???



How Does Power Supply Effect Sound Quality? The power supply significantly impacts sound quality by providing a stable and clean source of power to audio components. A high-quality power supply with low output impedance ensures minimal fluctuations in the DC output. This optimizes the performance of transistors and integrated circuits. In



In my experience, the first use of an external power supply came from PS Audio, nearly 50 years ago (though likely others did it too). When Stan and I were working on building new products, Stan had discovered the benefits of an oversized power supply: more slam, openness, greater solidity in the bottom end, and far better transparency.



A sturdy power supply is the basis of any quality audio system. Without sustainable power, even the best-sounding output sections can sound dull and weak. whole home audio, commercial audio, studio monitors, subwoofers, PA speakers, sound reinforcement, and even non-audio applications. Our power supplies include a main converter as well as



The good news is that, in a properly designed audio system, a safety ground will not hurt and may actually help produce optimal sound quality. We'll see how this works a little later. Most audio components will have one or more power supplies. I think of the purpose of a power supply is to provide the operating environment for the audio



The power supply part of the BOTW P&P ECO provides the split-current system with continuous powerful and clean power, so the electronics can do their job profoundly: 1) to buffer the power, so that the power supply becomes fast, and 2) to filter one last time the voltage and current before they enter the audio device.



AC-DC power supply voltage notes. When it comes to the voltage you'll need, 12V is usually fine and is one of the most common you'll find when shopping. Most car amplifiers can work at a voltage as high as close to 15V, so there's no strict requirement as long as it falls into an acceptable range of around 12V to below 15V.



DR . Power supply. The 555 PS DR power supply is the finest power supply in our product range. It provides a smooth, stable, and low-noise foundation, which significantly enhances your listening experience when paired with any Naim Audio product.



In this article we will explain the role of power inverter for sound system and how to choose it. Imagine listening to your favorite songs while living off-grid in the woods without worrying about the power supply. And ???



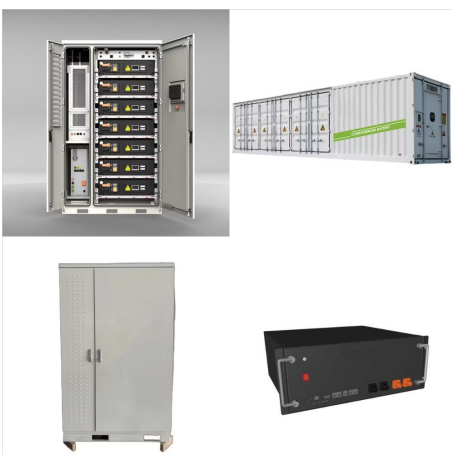
The Sbooster Best of Two Worlds Power & Precision Mk II is a highly optimized, heavily shielded linear power supply with noise filtration. Available in multiple voltages, Sboosters are compatible with a wide variety of components.



UpBright New Global 20V AC / DC Adapter
Compatible with Bose Solo 5 TV Sound Home
Theatre Bar System Solo5 TV Soundbar Bluetooth
Speaker Modele/Model: 418775 732522-1110
20VDC 20V DC 30W MAX DT20V-1.8C-DC
DT20V-18C-DC DT20V1.8C-DC DT20V-1.8CDC
DT20V1.8CDC DC20V 1.5A 1.8A 2.25A & 2.5A
36W 20.0V 1500mA 1800mA 2250mA 20 V ???



This post (originally from ~2014) introduces the basic operation of a linear power supply, showing voltage and currents at the input and output. There has been a lot of debate about power cords and their impact on the ???



The Radial Power-2 is a rugged 1U rackmount power supply that provides clean power and reliable surge protection for studios and live sound applications. It comes with Radial's reputation for excellent build and reliability and is one of ???



The sleek amplifier styled chassis of the SPS-100.4 is designed to easily integrate into audio installs for on the go power when you can't run your vehicle to utilize its DC charging system. It's capable of up to 100 amps of output power at 16 volts which can supply enough juice for audio systems up to 1500 watts.



IC LA5617 Multi-System Power Supply untuk Audio Equipment. Rp35.000. Bisa COD. 5.0. 6 terjual. Bahagia Electronics Jatinegara Jakarta Timur. POWER SUPPLY 12V 30A COCOK UNTUK CCTV,LAMPU AUDIO / PSU 30A 12V MURNI. Rp90.000. 5.0. 9 terjual. Energi cctv Jakarta Barat. PROMO Converter VGA to HDMI HD 1080P With Audio and Power Supply.



Power-Supply Technologies There are three principal ways to power an amplifier: 1. a simple unregulated power supply consisting of transformer, rectifiers, and reservoir capacitors; 2. a linear regulated power supply; 3. a switch-mode power supply.



The following graph shows the noise level measurements of the original wall wart power supply (red line), an alternative power supply based on a Liner Regulator (blue line), and the Teddy12/2 power supply (black line). The brown line is a zero Volt reference which is actually the measurement equipment internal noise. As can be seen the Teddy12



Yet another strategy is to plug all your gear into a line interactive uninterruptible power supply (UPS), such as the \$250 Cyberpower CP1500PFCLCD. Eliminate hum with the \$80 EBTech HUM X