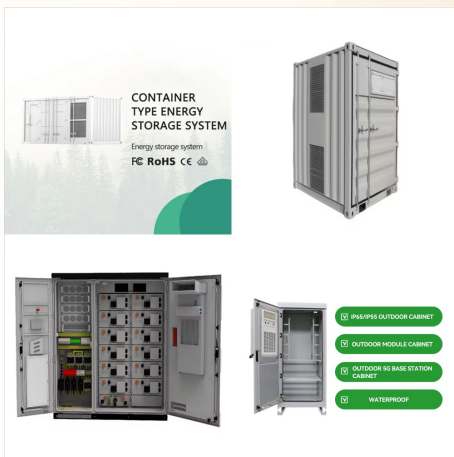




Page 1 AURORA Photovoltaic Inverters
 INSTALLATION AND OPERATOR's MANUAL
 Model number: PVI-6000-OUTD-xx-AU Rev. 1.0;
 Page 2 Page 2 of 89 (PVI-6000-OUTD-xx-AU
 Rev:1.0) REVISION TABLE Document Author Date
 ???



Aurora's AutoString allows you to string your PV design with just a few clicks. To AutoString your system: Click string/connect; Click AutoString; Select the inverter you would like to string and click auto-string. Click run AutoString Recap. Aurora provides you with different ways to both place modules and string your PV System.

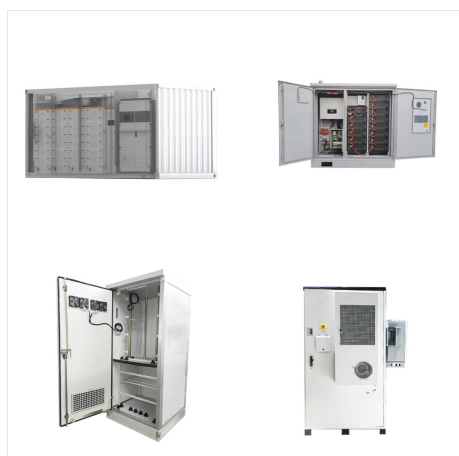


Power One 6000 Watt 208/240/277 VAC Grid Tie Inverter. Aurora grid-tie transformerless inverters offer a unique combination of ultra-high efficiencies, installer-friendly designs, long service life, and competitive initial acquisition costs; significantly increasing return on investment in solar-power installations.

AURORA PHOTOVOLTAIC INVERTER



Aurora's pricing model is designed to put you in control. Our flexible credit-based system empowers you to pay for only what you use, at your own pace. First, each of Aurora's pricing plans is tailored to different business sizes and requirements. Select the plan that aligns best with your business needs.



Page 3 Aurora Photovoltaic Inverters ??? This document describes the installation and con??? guration procedure for Power-One Aurora Photovoltaic Inverters. This document does not replace the User Manual, but is intended to provide a quick installation guide. If further clari??? cation or other details are required, please see the User Manual

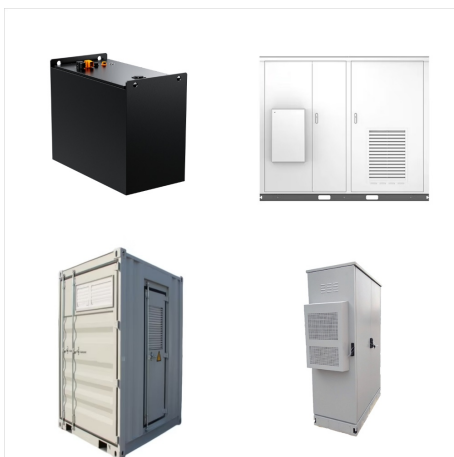


Installation and operating manual Page 11 of 95 (PVI-3.8/4.6-I-OUTD Rev.: 1.5) INTRODUCTION This document is a technical description of the AURORA photovoltaic inverter; the aim of the document is to provide the installer and user with the necessary information regarding the installation, operation and use of AURORA photovoltaic inverters.

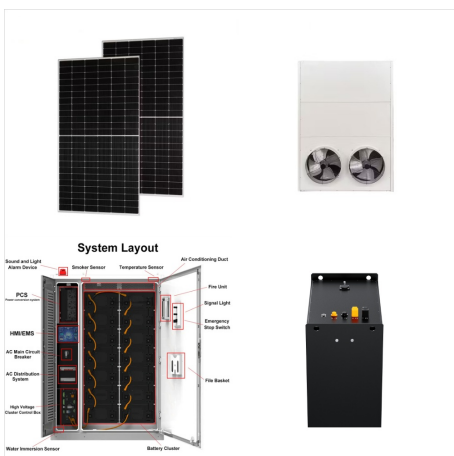
AURORA PHOTOVOLTAIC INVERTER



Speed meets accuracy when you design with Aurora. You can remotely design a 3D site model with accurate measurements and model a PV Help Center. English Start by selecting and adding the system components that you use. These include modules, inverters, and DC optimizers. To add your system components:



Uno. ABB / Power One Aurora Solar Inverter LED Indicators: Green Light - The green "Power" LED indicates that the solar inverter is operating correctly. The green light flashes upon start-up, during the grid check routine. If a correct grid voltage is detected and solar radiation is strong enough to start-up the unit, the green light stays on steady.



Photovoltaic inverters (78 pages) Summary of Contents for Power One Aurora Trio Page 1 TRIO-5.8_7.5_8.5-TL-OUTD-Quick Installation Guide EN RevA The models of inverter to which this guide refers are available in 3 power ratings: 5.8 kW, 7.5 kW e 8.5 kW.

AURORA PHOTOVOLTAIC INVERTER



Page 1 AURORA Photovoltaic Inverters
INSTALLATION AND OPERATOR's MANUAL
Model number: PVI-6000-OUTD-xx-AU Rev. 1.0;
Page 2 Page 2 of 89 (PVI-6000-OUTD-xx-AU
Rev:1.0) REVISION TABLE Document Author Date
Change Description Revision First release SAVE
THESE INSTRUCTIONS ! IMPORTANT SAFETY
INSTRUCTIONS POWER-ONE: ???



1. Purpose: This document provides guidelines for derating input voltage and operating temperature ratings for Power???One's Aurora isolated string photovoltaic inverters. 2. Target Audience: This document is intended for qualified inverter installation planners and designers. 3. Validity: The guidelines herein apply to Power-One Aurora family isolated string inverters; ???



Speed meets accuracy when you design with Aurora. You can remotely design a 3D site model with accurate measurements and model a PV system with reliable energy production values- no truck roll needed! Table of Contents. 1. ???

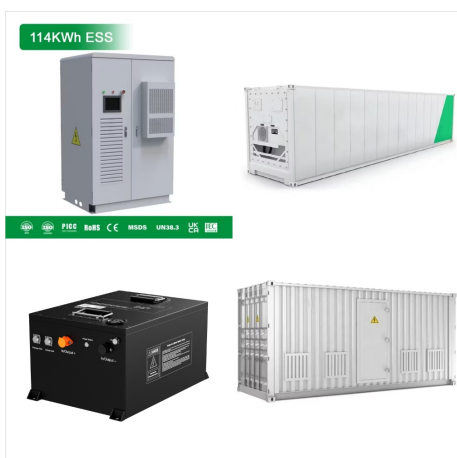
AURORA PHOTOVOLTAIC INVERTER



Aurora String Inverter, 4200 Watt, 240V Split-Phase 208V AC or 277V AC Output. Transformerless. Includes: DC PV System Disconnect Switch and Integrated Arc Fault Detection and Interruption, Cat #: PVI-4.2-OUTD-S-US-A, Mfr: Power-One



Page 4 photovoltaic inverters installation and configuration manual for aurora photovoltaic inverters ??? This document describes the installation and configuration procedure for Power-One Aurora Photovoltaic Inverters. The models this document refers to are shown in the table below. single phase thRee phase
PVI-3.0-TL-OUTD PVI-10.0-TL-OUTD PVI



Can Aurora solar power inverters be repaired?
Aurora inverters have very few repairable parts. Unfortunately in most cases, the inverter will require a full replacement. However, in some cases, the inverter isn't actually the issue! It can be faulty wiring or DC isolators causing the Aurora inverter to stop working.

AURORA PHOTOVOLTAIC INVERTER



Page 1 (R) AURORA Photovoltaic Inverters
INSTALLATION AND OPERATOR MANUAL Model
number: PVI-3.8/4.6-I-OUTD-US Rev. 1.1; Page 2:
Important Safety Instructions Installation and
Operation Manual Page 2 of 104
(PVI-3.8/4.6-I-OUTD-US Rev.: 1.1) TABLE OF
CHANGES Document Revision Author Date
Change Description Federico Mastronardi 03/08/10
First draft ???



Power-One is an Italy-based company that
manufactures a range of power conversion and
management products, and is well-known in the
solar PV industry for its quality solar inverters for
residential and commercial solar
applications???especially its Aurora inverter line.
The company was established in 1973, and began
producing components for renewable ???



AURORA(R) TRIO Photovoltaic Inverters The
Manual: PVI-10/12-I-OUTD 3.3 Possible AURORA
Inverter DC Input Configuration ..91 3.3.1 Selecting
The Country Code.. 92 3.4.1 Grid-Type
Configuration: Phase Connection Selection

AURORA PHOTOVOLTAIC INVERTER



It turns out that the Aurora solar PV inverters contain a dual-firmware. They can be switched over to a wind inverter, with an MPPT-table by using Power-One's CVI software. Now that wind inverters have become hard to get, this is an option when a wind inverter is needed. Please be sure to read the instructions before attempting this!



AURORA Photovoltaic Inverter (R) 8 General Specifications Outdoor models PVI-3.0-OUTD / PVI-3.0-OUTD-S PVI-3.6-OUTD / PVI-3.6-OUTD-S PVI-4.2-OUTD / PVI-4.2-OUTD-S AURORA BENEFITS Dual input section to process two strings with independent MPPT High speed MPPT for real time power tracking and improved energy harvesting

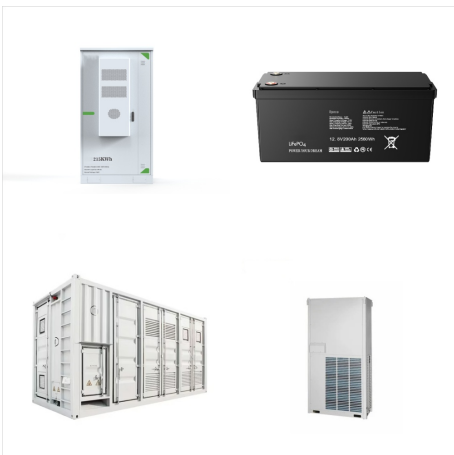


Power-One Aurora Micro-Inverter 300 Watt. Model MICRO-0.3-I. The new Aurora 300-watt micro-inverter offers something new to Power-One customers. The ability to individually link all modules within a specific installation is an alternative to the traditional Aurora string ???

AURORA PHOTOVOLTAIC INVERTER



Pricing in New Aurora, Financing Products, Financing Analysis, Incentives. Utilities . Utility Rates, Utility Savings, & Energy Consumption. Proposals & Documents . Web Proposals, Print Proposals, & Downloads. API & Release Notes. Webhooks, API Tokens, & New Aurora Release Notes . Apps. Streamline your solar workflows with Aurora-integrated

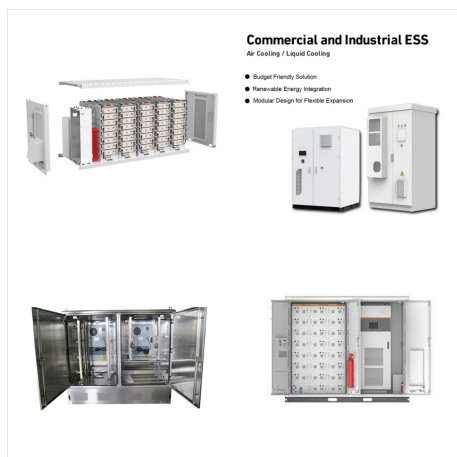


Use and installation manual Page (PVI-10.0/12.0-I-OUTD(-S)-400 Rev:1.3)
INTRODUCTION This document is a technical description of the AURORA photovoltaic inverter; the aim of this document is to provide the installer and user with the necessary information regarding the installation, operation and use of AURORA.



Repair Service of Faulty Aurora Solar PV Inverters
Aurora (ABB) Power-One Aurora inverters are a brand owned by the ABB group, a Swedish-Swiss multinational corporation headquartered in Zurich, Switzerland. The most common Aurora inverters found in the UK are the Aurora PVI-3.0, PVI-3.6 and PVI-4.2. Aurora (ABB) inverters are considered to be

AURORA PHOTOVOLTAIC INVERTER



Connects to: Combiner Boxes, Inverters,
Disconnects Properties: none. Combiner Boxes.
Amongst the balance of system components you
can model in Aurora are combiner boxes and
re-combiner boxes (both are represented by the
combiner box component). Connects to: Strings,
Combiner Boxes, Inverters, Disconnects Properties:
none. String Inverters